

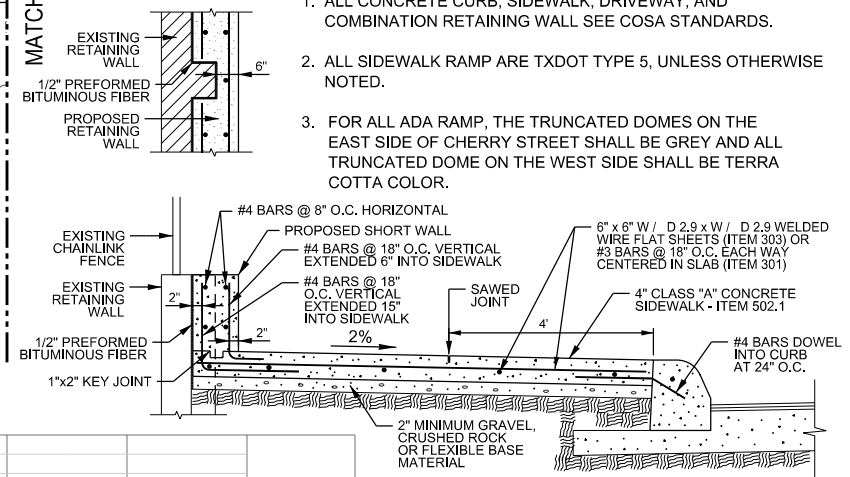


LEGEND

- EXISTING EDGE OF ROADWAY
- EXISTING FEATURES
- EXISTING RIGHT OF WAY
- PROPOSED EASEMENT
- EXISTING EASEMENT
- EXISTING FENCE
- PROPOSED CONCRETE CURB
- TRAFFIC FLOW DIRECTION
- PROPOSED RETAINING WALL
- STORM WATER FLOW ARROW
- DRIVEWAY NUMBER
- SIDEWALK RAMP
- MILL & OVERLAY
- TRANSITION PAVEMENT

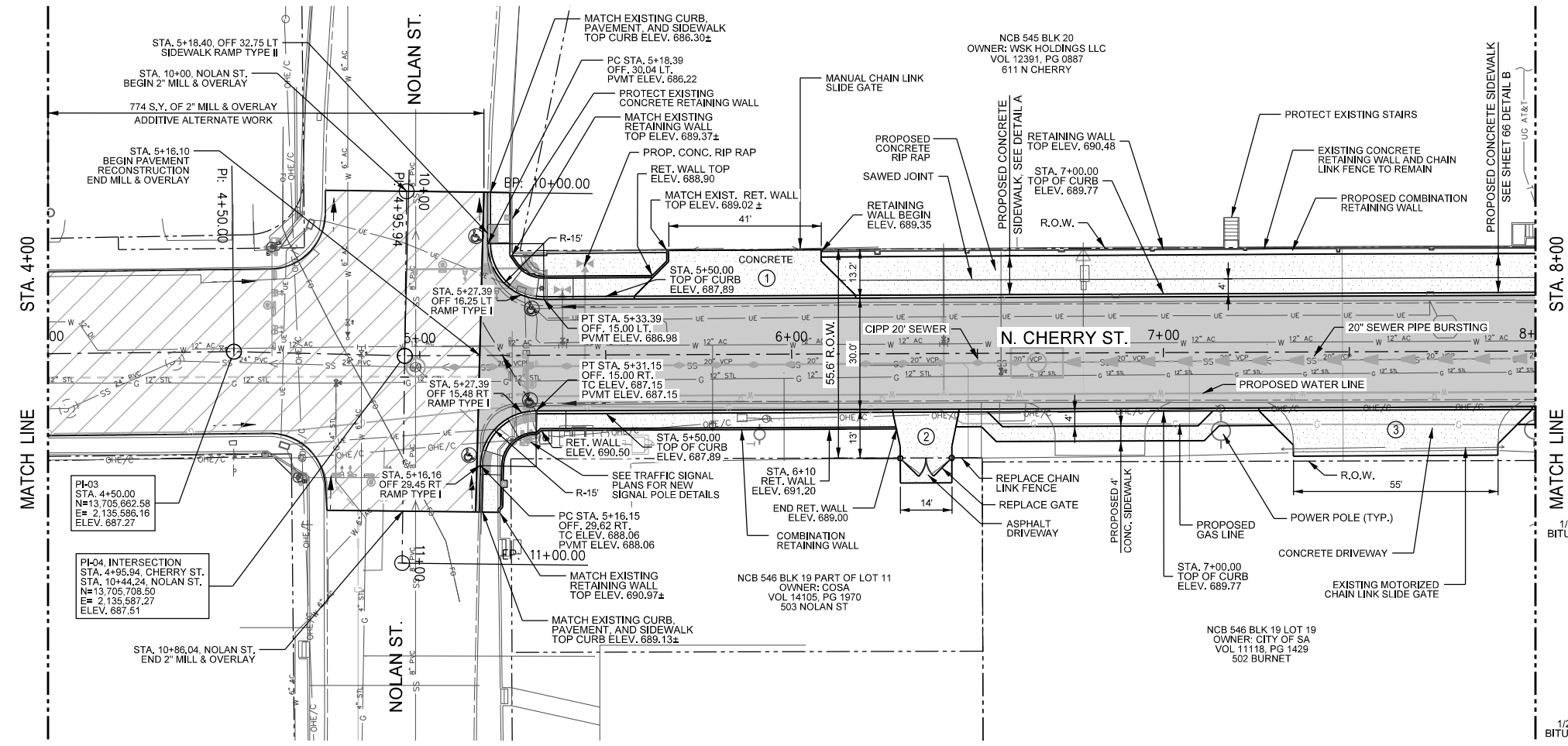
NOTES

1. ALL CONCRETE CURB, SIDEWALK, DRIVEWAY, AND COMBINATION RETAINING WALL SEE COSA STANDARDS.
2. ALL SIDEWALK RAMP ARE TXDOT TYPE 5, UNLESS OTHERWISE NOTED.
3. FOR ALL ADA RAMP, THE TRUNCATED DOMES ON THE EAST SIDE OF CHERRY STREET SHALL BE GREY AND ALL TRUNCATED DOME ON THE WEST SIDE SHALL BE TERRA COTTA COLOR.

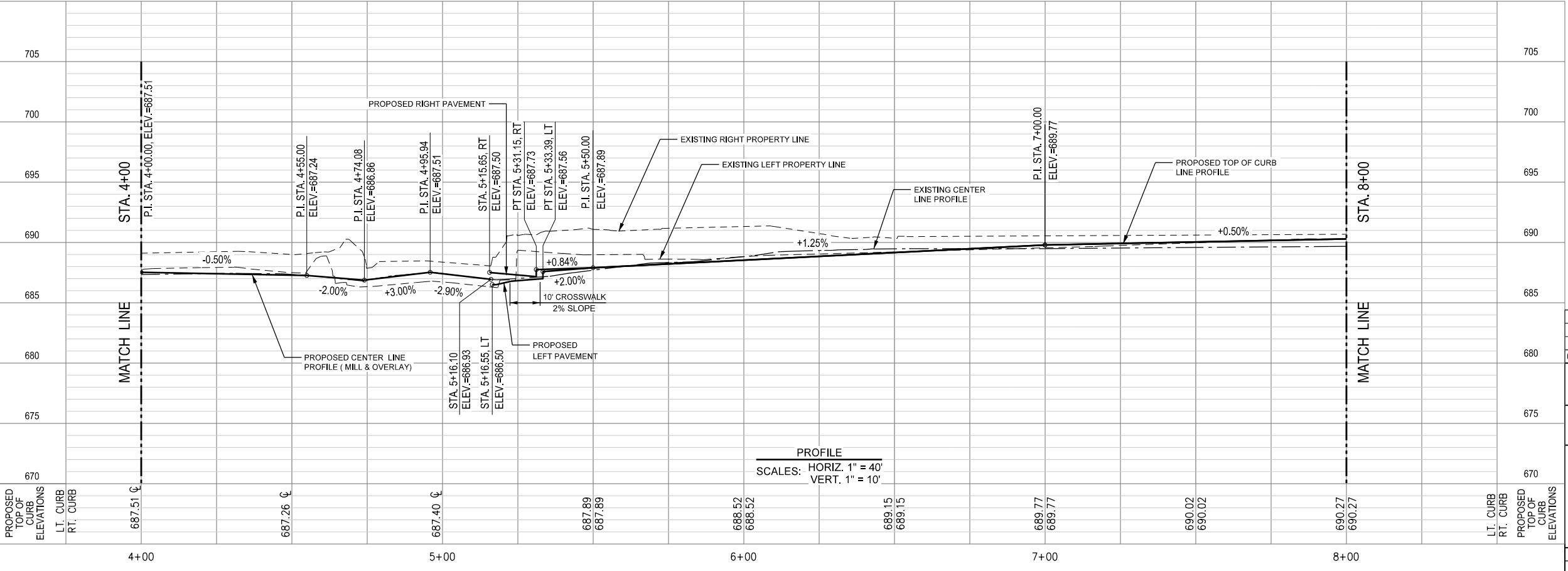


NOTE: WALL HEIGHT TO BE SHOWN ON PLAN AT SPECIAL LOCATIONS WHERE COMBINATION RETAINING WALL IS REQUIRED

DETAIL A
TYPICAL SHORT WALL DETAIL (NO SCALE)



PLAN
SCALE: 1" = 40'



PROFILE
SCALES: HORIZ. 1" = 40'
VERT. 1" = 10'

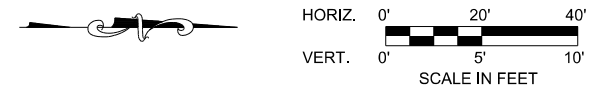
NO.	REVISION	DRAWN	APPROVED	DATE

K. M. Ng & Associates
A DIVISION OF MERRICK & COMPANY
REGISTERED PROFESSIONAL ENGINEERS

CITY OF SAN ANTONIO
DEPARTMENT OF TRANSPORTATION & CAPITAL IMPROVEMENTS

CHERRY STREET (DAWSON ST. TO MILAM ST.)
NORTH CHERRY STREET
PLAN AND PROFILE II
STA. 4+00 TO STA. 8+00

PLOT DATE: 10/20/15 AT 8:37:09 AM PLOTTED BY: rlu C:\SAN\Projects\1061-00-Cherry Street (Dawson St. to Milam Street)\DESIGN-DATA\CD\CSA\1061-001-RDWAY\PP\p1.dgn

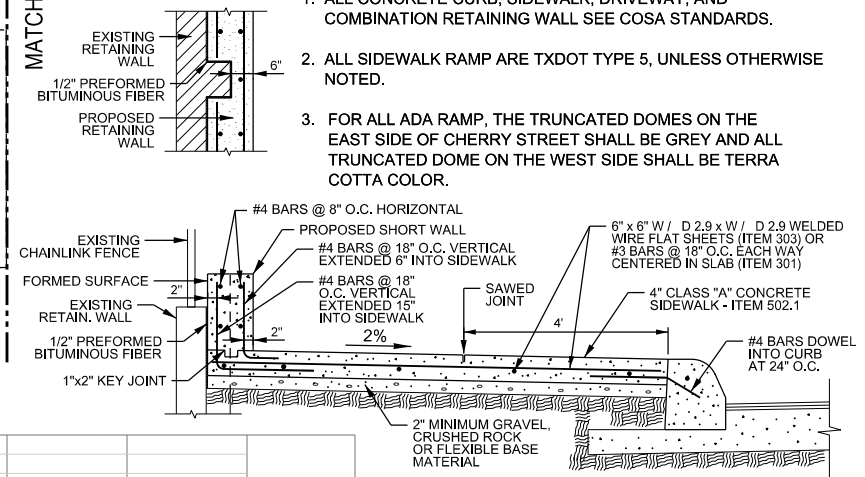


LEGEND

- EXISTING EDGE OF ROADWAY
- EXISTING FEATURES
- EXISTING RIGHT OF WAY
- PROPOSED EASEMENT
- EXISTING EASEMENT
- EXISTING FENCE
- PROPOSED CONCRETE CURB
- TRAFFIC FLOW DIRECTION
- PROPOSED RETAINING WALL
- STORM WATER FLOW ARROW
- DRIVEWAY NUMBER
- SIDEWALK RAMP
- MILL & OVERLAY
- TRANSITION PAVEMENT

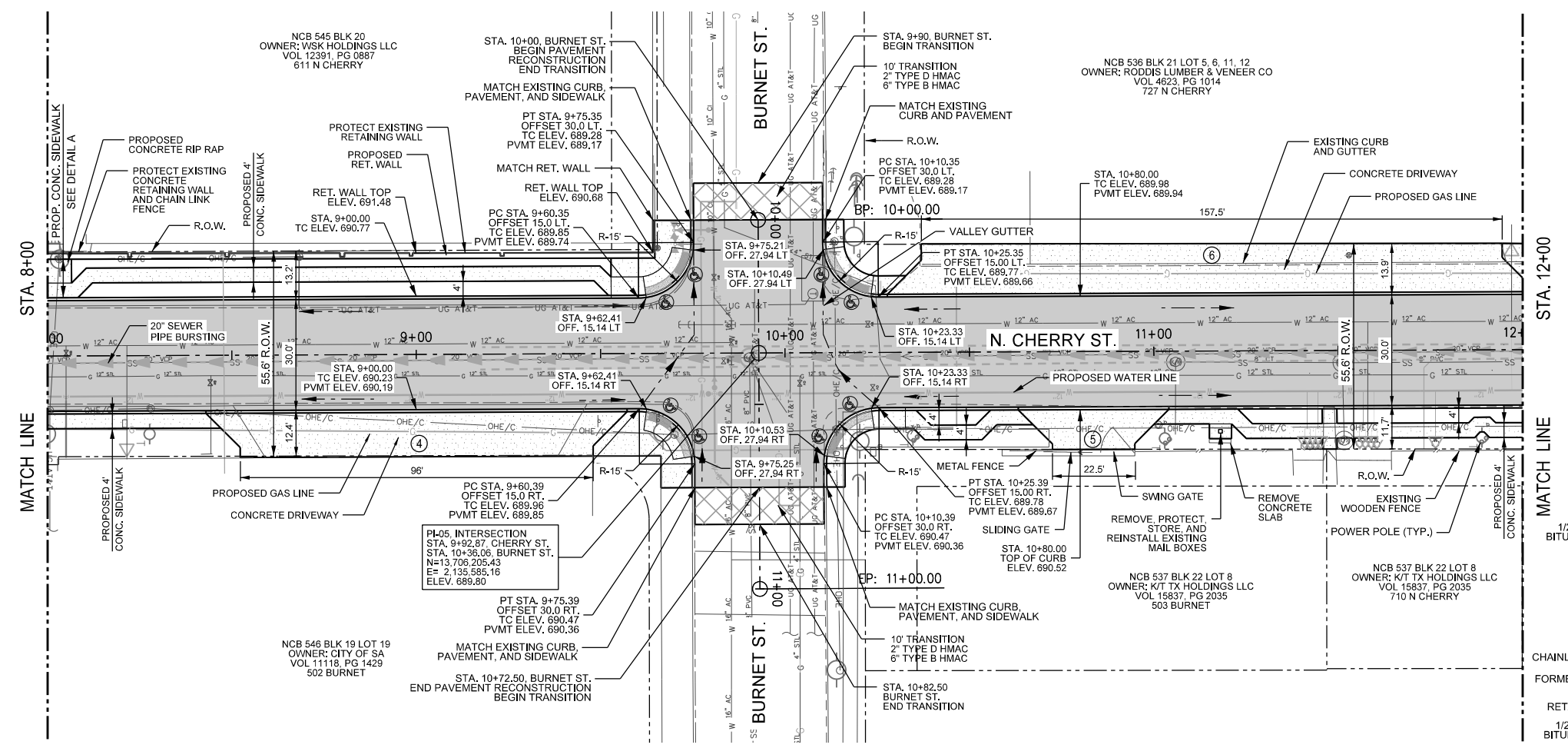
NOTES

1. ALL CONCRETE CURB, SIDEWALK, DRIVEWAY, AND COMBINATION RETAINING WALL SEE COSA STANDARDS.
2. ALL SIDEWALK RAMP ARE TXDOT TYPE 5, UNLESS OTHERWISE NOTED.
3. FOR ALL ADA RAMP, THE TRUNCATED DOMES ON THE EAST SIDE OF CHERRY STREET SHALL BE GREY AND ALL TRUNCATED DOME ON THE WEST SIDE SHALL BE TERRA COTTA COLOR.

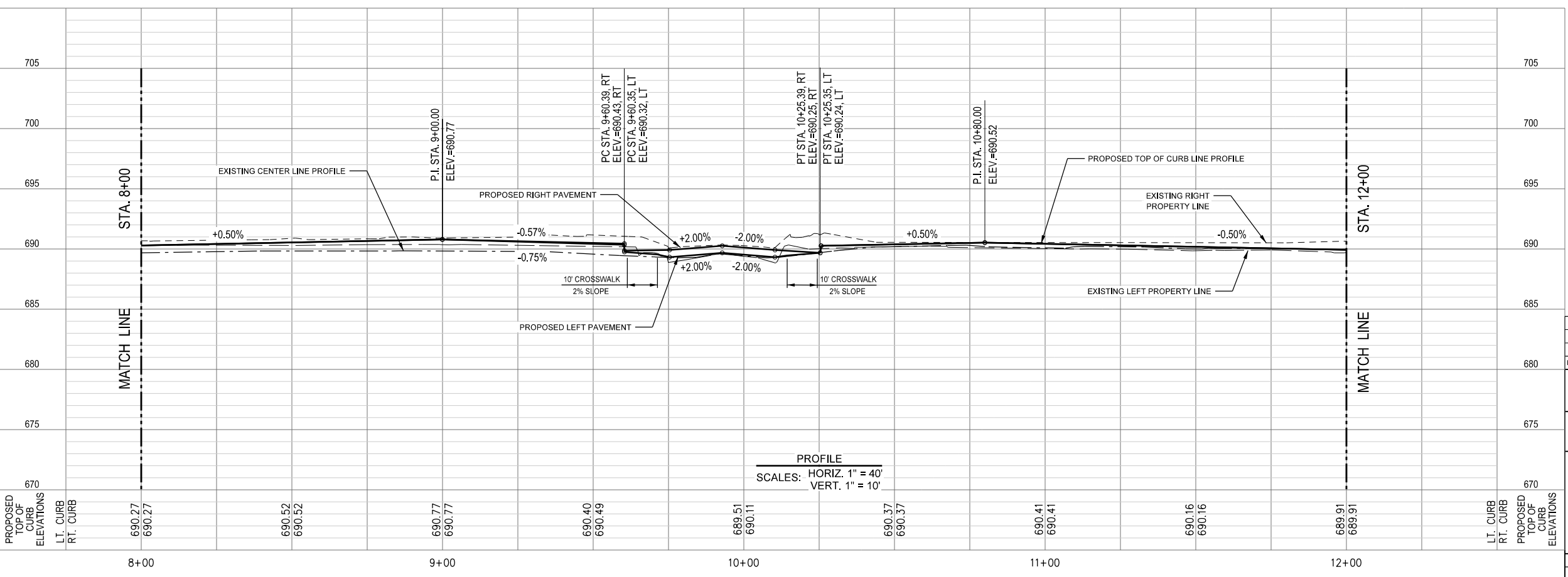


NOTE: WALL HEIGHT TO BE SHOWN ON PLAN AT SPECIAL LOCATIONS WHERE COMBINATION RETAINING WALL IS REQUIRED

DETAIL A
TYPICAL SHORT WALL DETAIL (NO SCALE)



PLAN
SCALE: 1" = 40'



PROFILE
SCALES: HORIZ. 1" = 40'
VERT. 1" = 10'

NO.	REVISION	DRAWN	APPROVED	DATE

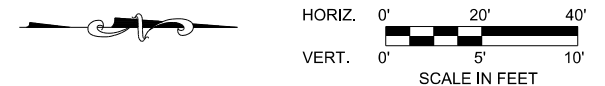
K. M. Ng & Associates
A DIVISION OF MERRICK & COMPANY
REGISTERED ENGINEERING FIRM

CITY OF SAN ANTONIO
DEPARTMENT OF TRANSPORTATION & CAPITAL IMPROVEMENTS
CHERRY STREET (DAWSON ST. TO MILAM ST.)
NORTH CHERRY STREET

PLAN AND PROFILE III
STA. 8+00 TO STA. 12+00

100% DESIGN	PROJECT NO.: 40-00293	DATE: 10/20/15
DRWN. BY: MC	DSGN. BY: PJ	CHKD. BY: KC
SHEET: 40 OF 130		

PLOT DATE: 10/20/15 AT 8:37:10 AM PLOTTED BY: rli

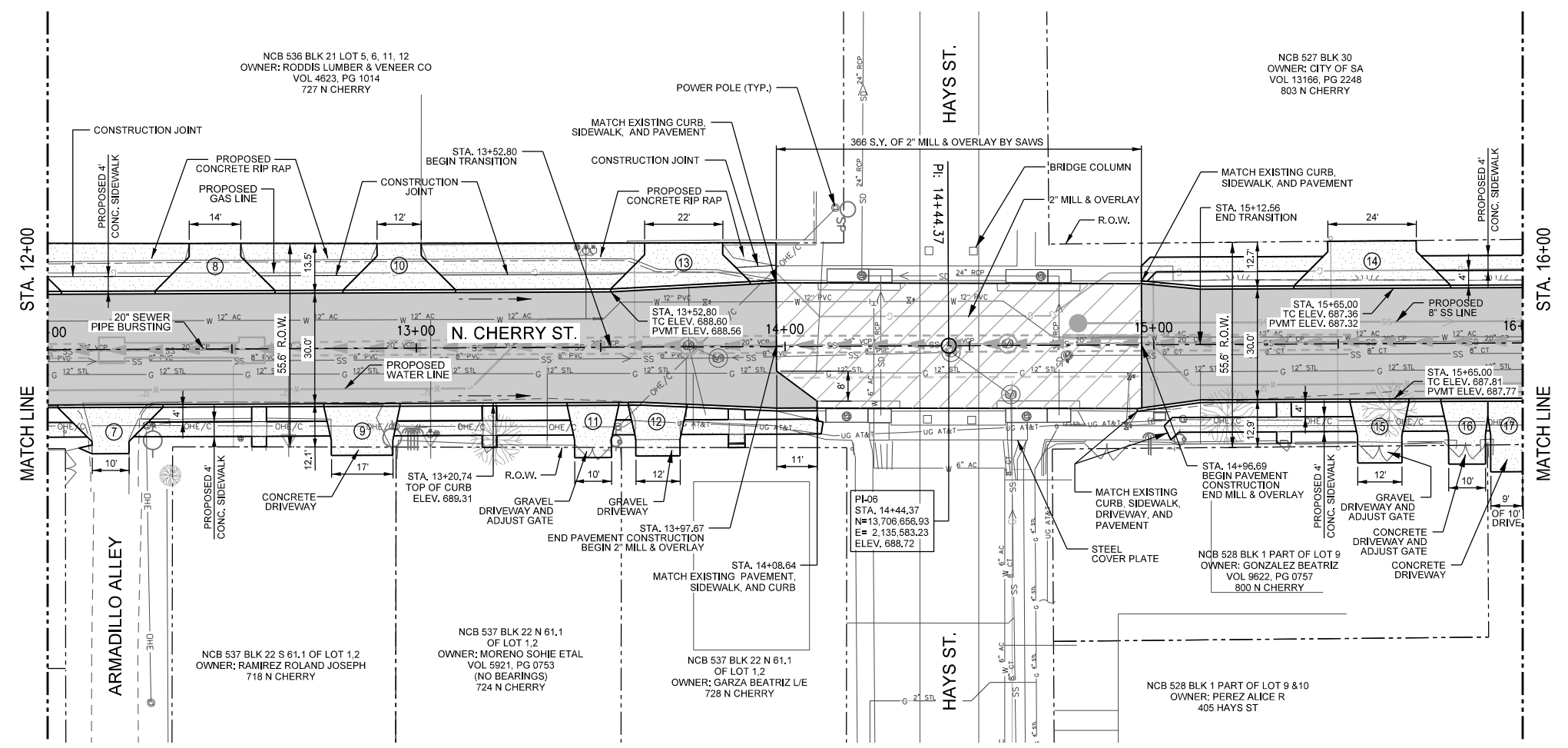


LEGEND

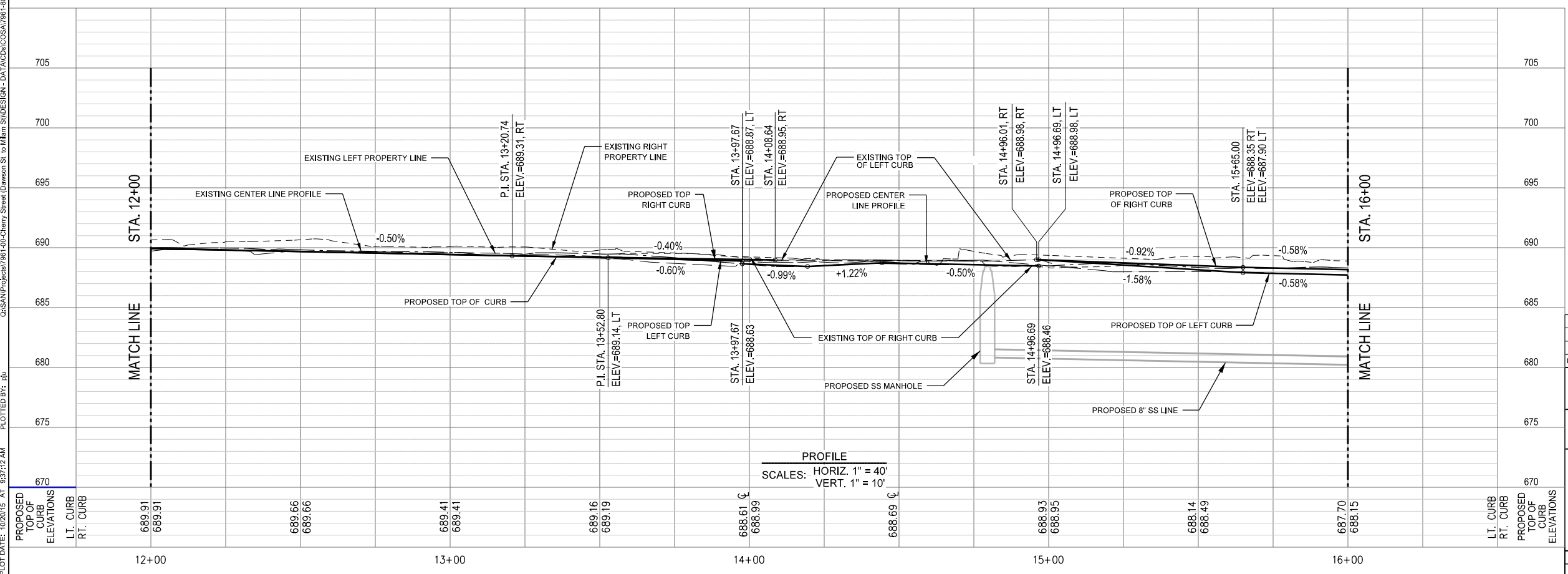
- EXISTING EDGE OF ROADWAY
- EXISTING FEATURES
- EXISTING RIGHT OF WAY
- PROPOSED EASEMENT
- EXISTING EASEMENT
- EXISTING FENCE
- PROPOSED CONCRETE CURB
- TRAFFIC FLOW DIRECTION
- PROPOSED RETAINING WALL
- STORM WATER FLOW ARROW
- DRIVEWAY NUMBER
- SIDEWALK RAMP
- MILL & OVERLAY
- TRANSITION PAVEMENT

NOTES

1. ALL CONCRETE CURB, SIDEWALK, DRIVEWAY, AND COMBINATION RETAINING WALL SEE COSA STANDARDS.
2. ALL SIDEWALK RAMP ARE TXDOT TYPE 5, UNLESS OTHERWISE NOTED.
3. FOR ALL ADA RAMP, THE TRUNCATED DOMES ON THE EAST SIDE OF CHERRY STREET SHALL BE GREY AND ALL TRUNCATED DOME ON THE WEST SIDE SHALL BE TERRA COTTA COLOR.



PLAN
SCALE: 1" = 40'



PROFILE
SCALES: HORIZ. 1" = 40'
VERT. 1" = 10'



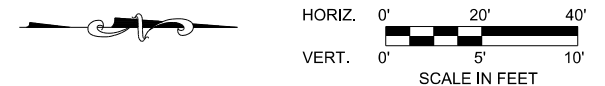
NO.	REVISION	DRAWN	APPROVED	DATE

K. M. Ng & Associates
A DIVISION OF MERRICK & COMPANY
SAN ANTONIO, TEXAS
TEXAS REGISTERED ENGINEERING FIRM #3817

CITY OF SAN ANTONIO
DEPARTMENT OF TRANSPORTATION & CAPITAL IMPROVEMENTS
CHERRY STREET (DAWSON ST. TO MILAM ST.)
NORTH CHERRY STREET
PLAN AND PROFILE IV
STA. 12+00 TO STA. 16+00

100% DESIGN	PROJECT NO.: 40-00293	DATE: 10/20/15
DRWN. BY: MC	DSGN. BY: PJ	CHKD. BY: KC
SHEET: 41 OF 130		

PLOT DATE: 10/20/15 AT 8:37:12 AM PLOTTED BY: rbl
 C:\SANI\Projects\3061-00-Cherry Street (Dawson St. to Milam St)\DESIGN - DATA\CD\CO\SAN1061-802-RDWY\PP1.dgn

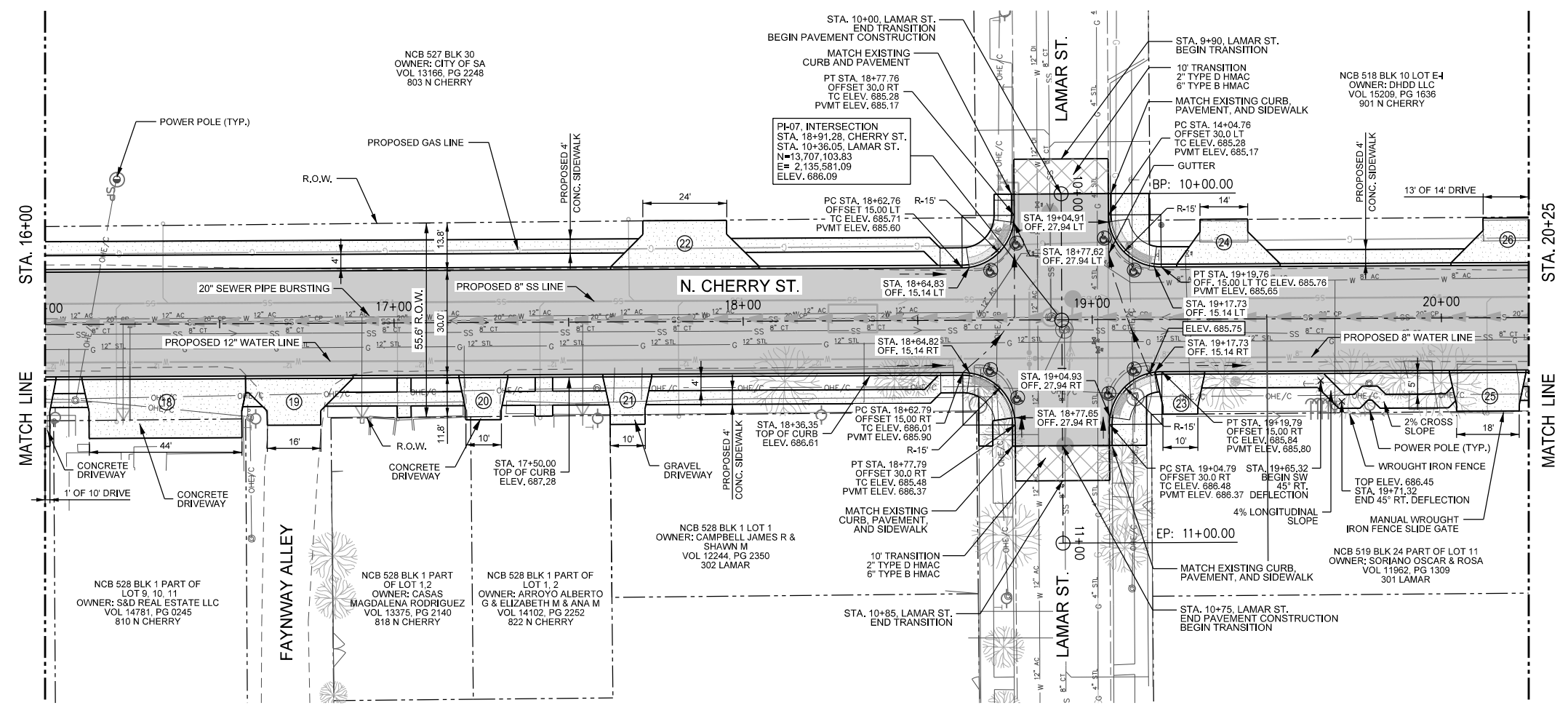


LEGEND

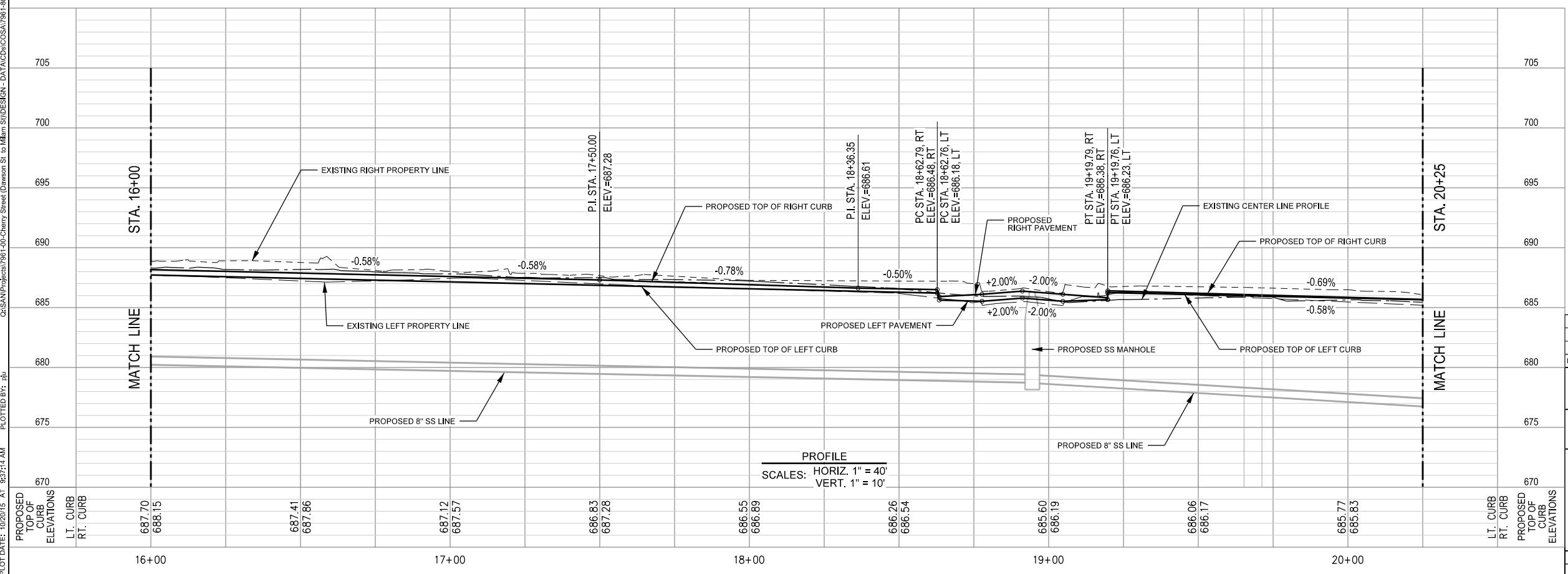
- EXISTING EDGE OF ROADWAY
- EXISTING FEATURES
- EXISTING RIGHT OF WAY
- PROPOSED EASEMENT
- EXISTING EASEMENT
- EXISTING FENCE
- PROPOSED CONCRETE CURB
- TRAFFIC FLOW DIRECTION
- PROPOSED RETAINING WALL
- STORM WATER FLOW ARROW
- DRIVEWAY NUMBER
- SIDEWALK RAMP
- MILL & OVERLAY
- TRANSITION PAVEMENT

NOTES

1. ALL CONCRETE CURB, SIDEWALK, DRIVEWAY, AND COMBINATION RETAINING WALL SEE COSA STANDARDS.
2. ALL SIDEWALK RAMP ARE TXDOT TYPE 5, UNLESS OTHERWISE NOTED.
3. FOR ALL ADA RAMP, THE TRUNCATED DOMES ON THE EAST SIDE OF CHERRY STREET SHALL BE GREY AND ALL TRUNCATED DOME ON THE WEST SIDE SHALL BE TERRA COTTA COLOR.



PLAN
SCALE: 1" = 40'



PROFILE
SCALES: HORIZ. 1" = 40'
VERT. 1" = 10'



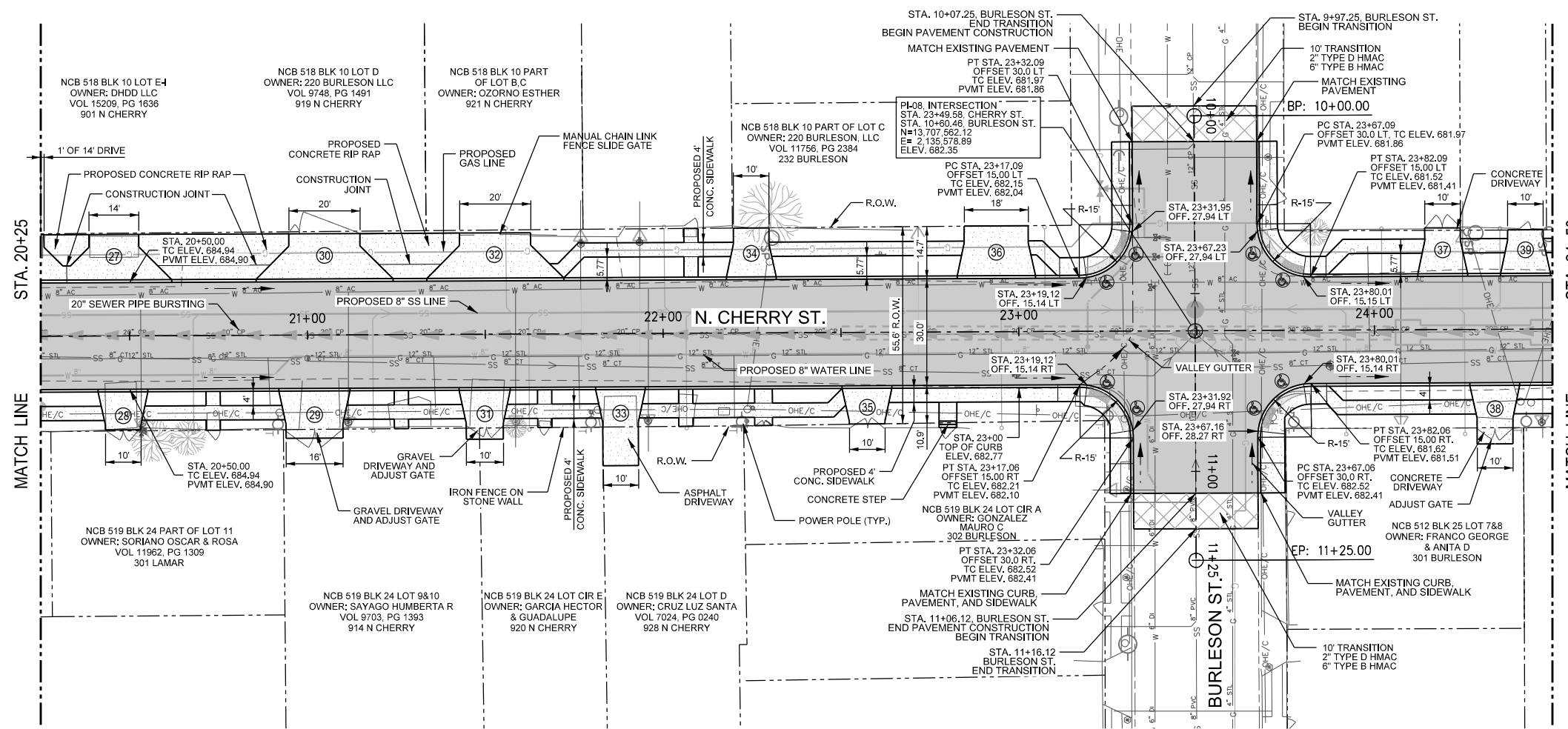
NO.	REVISION	DRAWN	APPROVED	DATE

K. M. Ng & Associates
A DIVISION OF MERRICK & COMPANY
SAN ANTONIO, TEXAS
TEXAS REGISTERED ENGINEERING FIRM #301

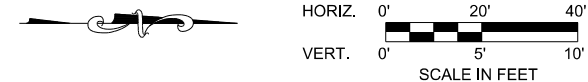
CITY OF SAN ANTONIO
DEPARTMENT OF TRANSPORTATION & CAPITAL IMPROVEMENTS
CHERRY STREET (DAWSON ST. TO MILAM ST.)
NORTH CHERRY STREET
PLAN AND PROFILE V
STA 16+00 TO STA 20+25

100% DESIGN	PROJECT NO.: 40-00293	DATE: 10/20/15
DRWN. BY: MC	DSGN. BY: PJ	CHKD. BY: KC
SHEET: 42 OF 130		

PLOT DATE: 10/20/15 AT 8:37:14 AM PLOTTED BY: rlu
 C:\SANI\Projects\3961-00-Cherry Street (Dawson St. to Milam St)\DESIGN - DATA\CD\3961-00-Cherry Street (Dawson St. to Milam St.)\CD\3961-00-Cherry Street (Dawson St. to Milam St.)\PLAN AND PROFILE V.dwg



PLAN
SCALE: 1" = 40'



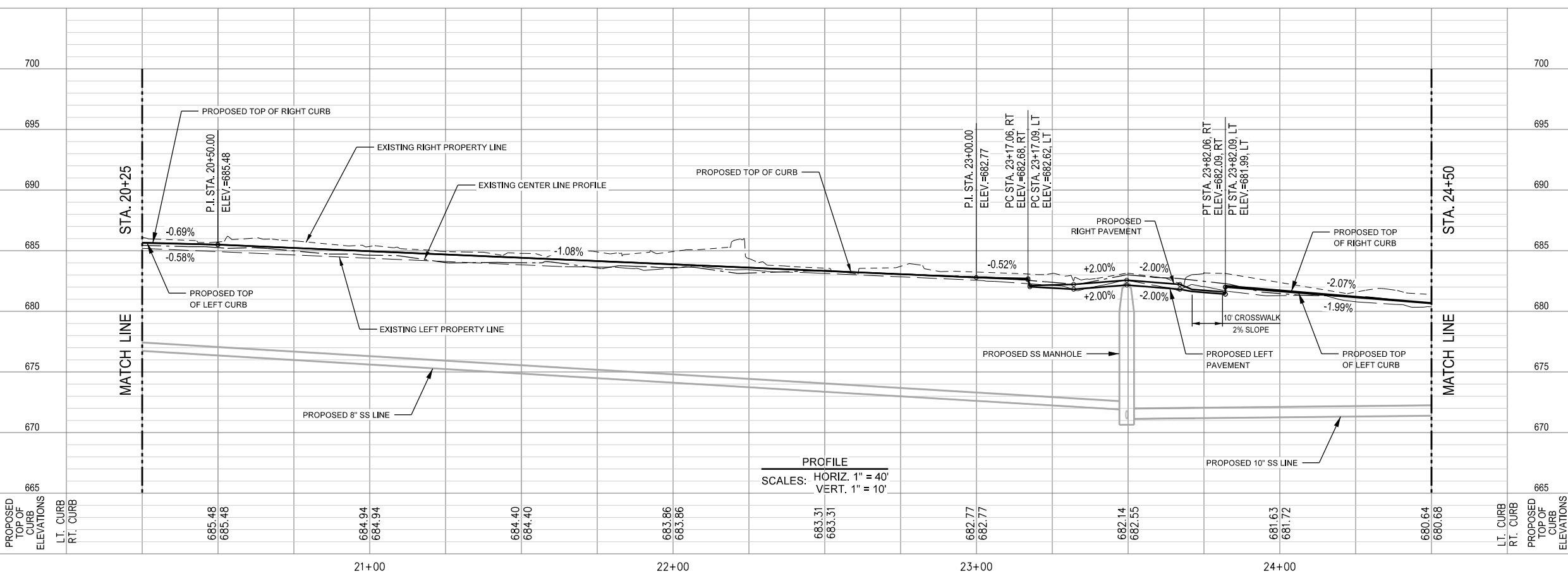
LEGEND

- EXISTING EDGE OF ROADWAY
- EXISTING FEATURES
- EXISTING RIGHT OF WAY
- PROPOSED EASEMENT
- EXISTING EASEMENT
- EXISTING FENCE
- PROPOSED CONCRETE CURB
- TRAFFIC FLOW DIRECTION
- PROPOSED RETAINING WALL
- STORM WATER FLOW ARROW
- DRIVEWAY NUMBER
- SIDEWALK RAMP
- MILL & OVERLAY
- TRANSITION PAVEMENT

NOTES

1. ALL CONCRETE CURB, SIDEWALK, DRIVEWAY, AND COMBINATION RETAINING WALL SEE COSA STANDARDS.
2. ALL SIDEWALK RAMP ARE TXDOT TYPE 5, UNLESS OTHERWISE NOTED.
3. FOR ALL ADA RAMP, THE TRUNCATED DOMES ON THE EAST SIDE OF CHERRY STREET SHALL BE GREY AND ALL TRUNCATED DOME ON THE WEST SIDE SHALL BE TERRA COTTA COLOR.

C:\SAN\Projects\102015\AT 83716\AM PLOTTED BY: rjl
 C:\SAN\Projects\102015\AT 83716\AM PLOTTED BY: rjl
 C:\SAN\Projects\102015\AT 83716\AM PLOTTED BY: rjl



PROFILE
SCALES: HORIZ. 1" = 40'
VERT. 1" = 10'

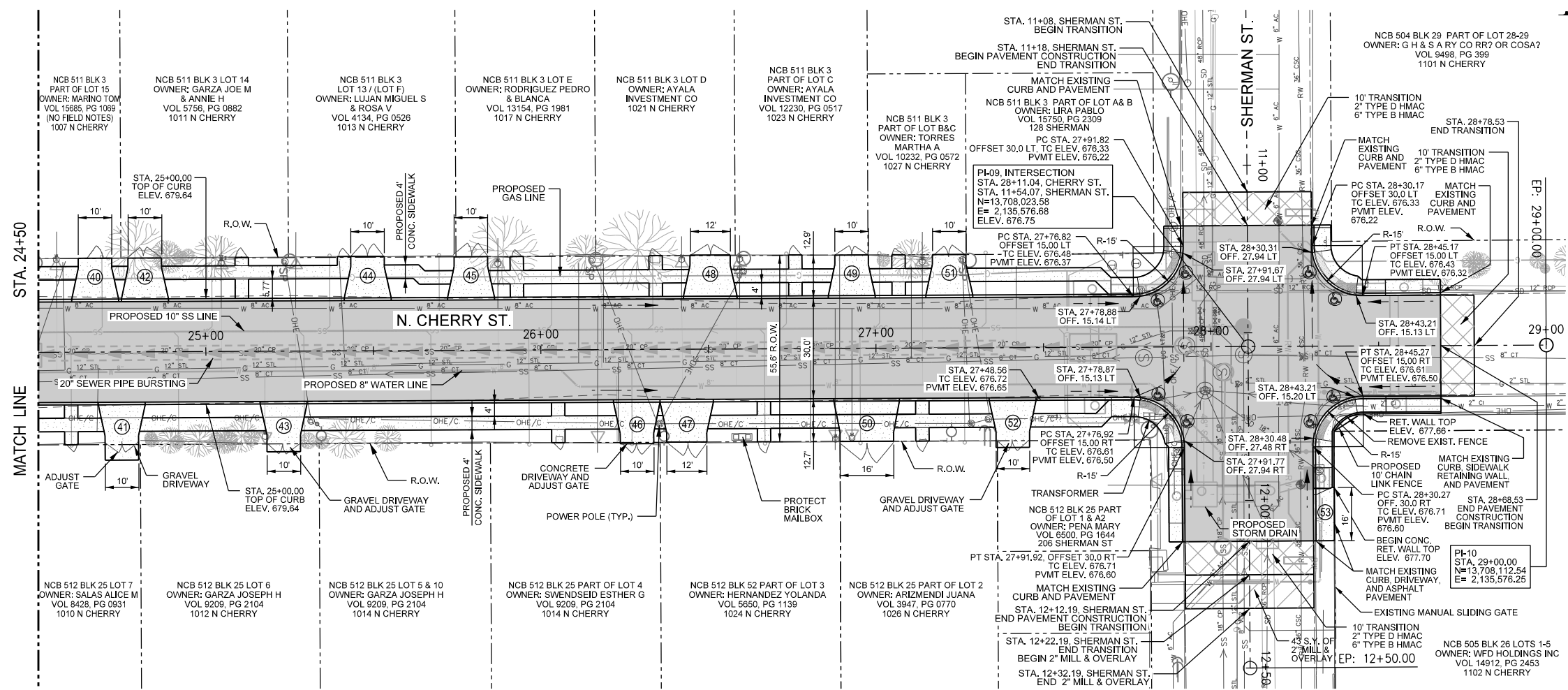


NO.	REVISION	DRAWN	APPROVED	DATE

K. M. Ng & Associates
A DIVISION OF MERRICK & COMPANY
SAN ANTONIO, TEXAS
TEXAS REGISTERED ENGINEERING FIRM #3817

CITY OF SAN ANTONIO
DEPARTMENT OF TRANSPORTATION & CAPITAL IMPROVEMENTS
CHERRY STREET (DAWSON ST. TO MILAM ST.)
NORTH CHERRY STREET
PLAN AND PROFILE VI
STA 20+25 TO 24+50

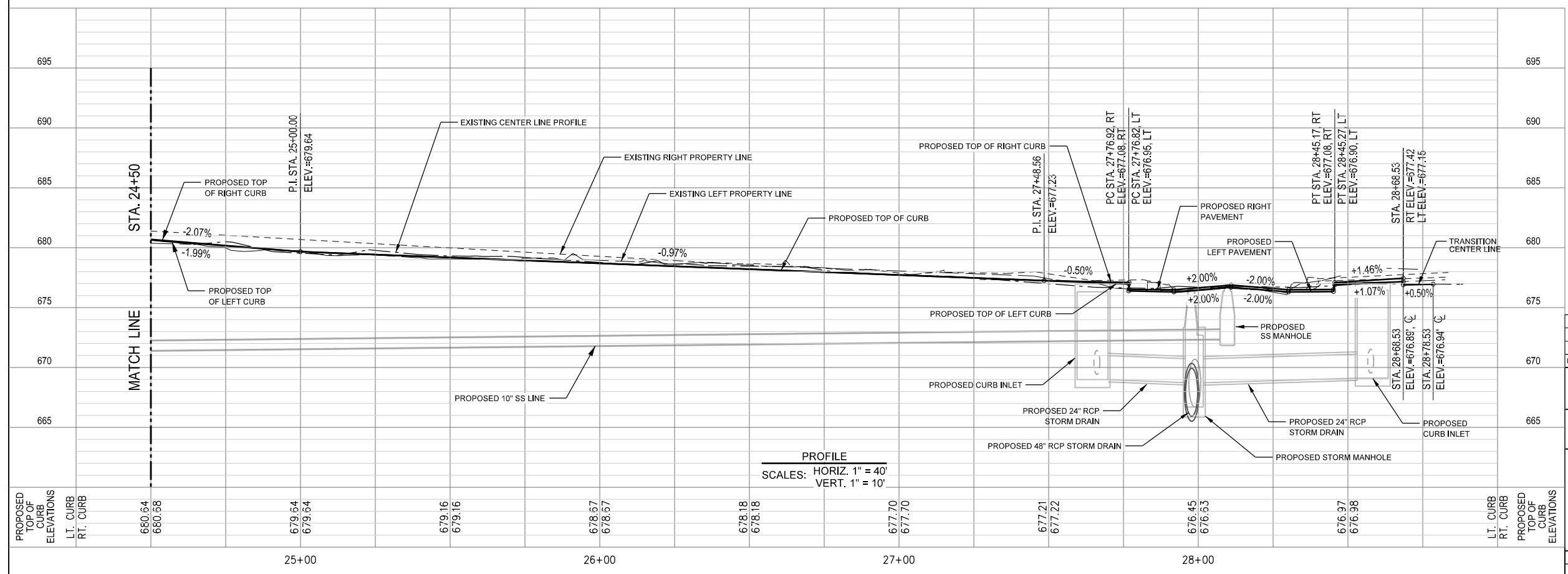
100% DESIGN	PROJECT NO.: 40-00293	DATE: 10/20/15
DRWN. BY: MC	DSGN. BY: PJ	CHKD. BY: KC
SHEET: 43 OF 130		



- LEGEND**
- EXISTING EDGE OF ROADWAY
 - EXISTING FEATURES
 - EXISTING RIGHT OF WAY
 - PROPOSED EASEMENT
 - EXISTING EASEMENT
 - EXISTING FENCE
 - PROPOSED CONCRETE CURB
 - TRAFFIC FLOW DIRECTION
 - PROPOSED RETAINING WALL
 - STORM WATER FLOW ARROW
 - DRIVEWAY NUMBER
 - SIDEWALK RAMP
 - MILL & OVERLAY
 - TRANSITION PAVEMENT

- NOTES**
1. ALL CONCRETE CURB, SIDEWALK, DRIVEWAY, AND COMBINATION RETAINING WALL SEE COSA STANDARDS.
 2. ALL SIDEWALK RAMP ARE TXDOT TYPE 5, UNLESS OTHERWISE NOTED.
 3. FOR ALL ADA RAMP, THE TRUNCATED DOMES ON THE EAST SIDE OF CHERRY STREET SHALL BE GREY AND ALL TRUNCATED DOME ON THE WEST SIDE SHALL BE TERRA COTTA COLOR.

PLAN
SCALE: 1" = 40'



PROFILE
SCALES: HORIZ. 1" = 40'
VERT. 1" = 10'



NO.	REVISION	DRAWN	APPROVED	DATE

K. M. Ng & Associates
A DIVISION OF MERRICK & COMPANY
SAN ANTONIO, TEXAS
TEXAS REGISTERED ENGINEERING FIRM #3017

CITY OF SAN ANTONIO
DEPARTMENT OF TRANSPORTATION & CAPITAL IMPROVEMENTS
CHERRY STREET (DAWSON ST. TO MILAM ST.)
NORTH CHERRY STREET
PLAN AND PROFILE VII
STA 24+50 TO STA 29+00

100% DESIGN	PROJECT NO.: 40-00293	DATE: 10/20/15
DRWN. BY: MC	DSGN. BY: PJ	CHKD. BY: KC
SHEET: 44 OF 130		