

200' Notification Area

Proposed Mixed Use



Low Density Residential



Medium Density Residential



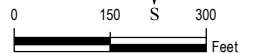
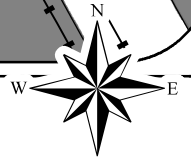
Business Park



Mixed Use



Parks/Open Space



Data Source: City of San Antonio Enterprise GIS, Bexar Metro 911, Bexar Appraisal District
 "This Geographic Information System Product, received from The City of San Antonio is provided "as is" without warranty of any kind, and the City of San Antonio expressly disclaims all express and implied warranties, including but not limited to the implied warranties of merchantability and fitness for a particular purpose. The City of San Antonio does not warrant, guarantee, or make any representations regarding the use, or the results of the use, of the information provided to you by the City of San Antonio in terms of correctness, accuracy, reliability, timeliness or otherwise. The entire risk as to the results and performance of any information obtained from the City of San Antonio is entirely assumed by the recipient."
 *Please contact the responsible City of San Antonio Department for specific determinations.
 City of San Antonio Planning Department GIS Manager: Woody Woodruff, wwoodruff@sanantonio.gov. Maps may be ordered at: (210) 207-7873

Map Created by: Gustavo Gutierrez
 Map Creation Date: 3/29/2017
 Map File Location: W:\Archived\Neighborhoods\Land_Use\Amendments\Amend_17042_SouthCentral_B&W.mxd
 PDF Filename: 1703GG.pdf

South Central San Antonio Community Plan

Proposed Plan Amendment 17042 Area

City of San Antonio
 Planning and Community
 Development Department

John M. Dugan, AICP
 Director

Cliff Morton Development and
 Business Services Center
 PO Box 839956
 San Antonio, TX 78283

