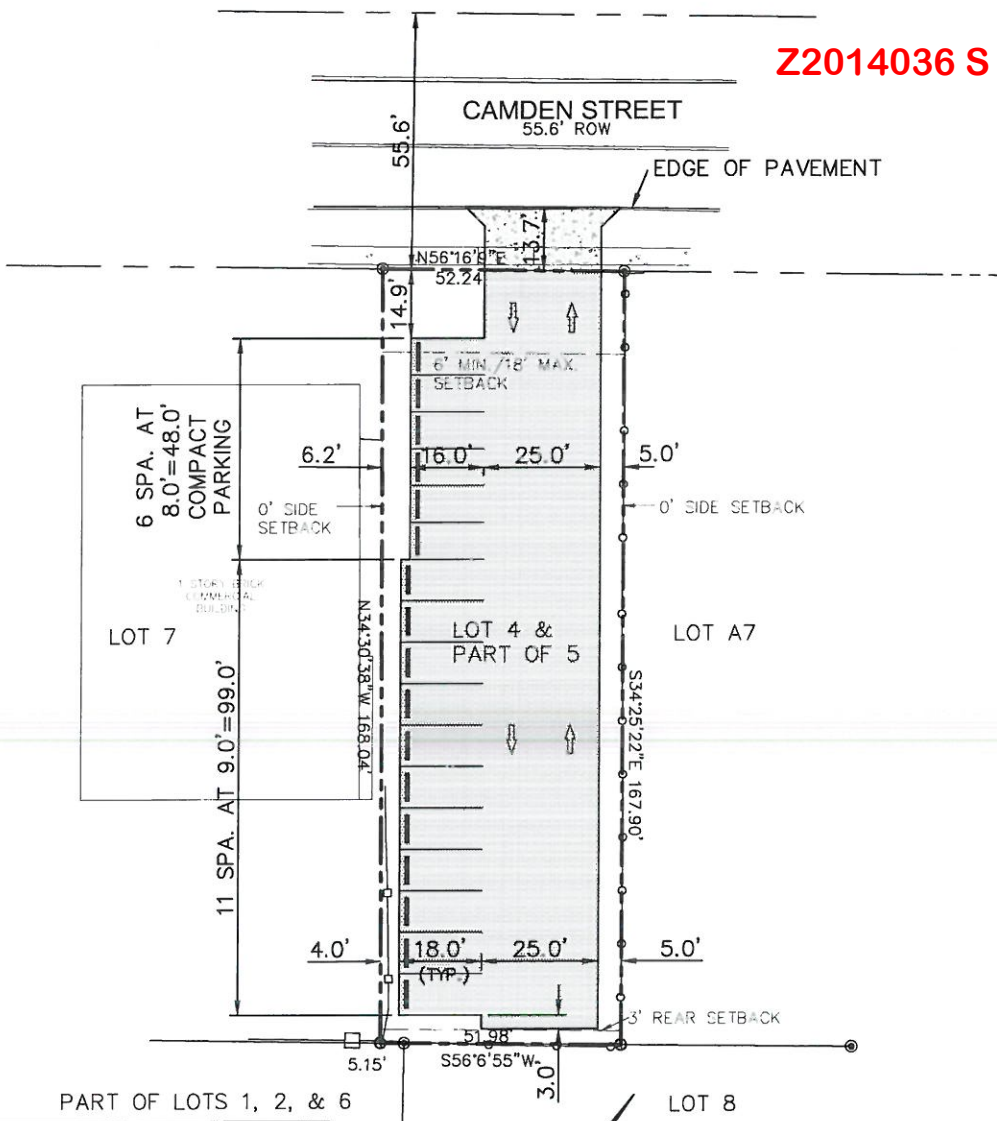


Z2014036 S



TOTAL SITE: 0.201 ACRES
 6664.5 SQ. FT. OF IMPERVIOUS COVER

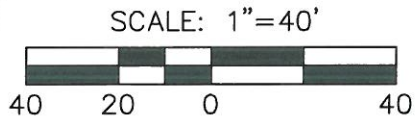
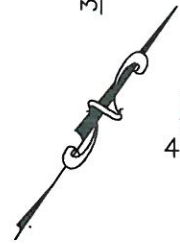
6664.5 SQ. FT. OF ALL PAVED OR HARD SURFACE
 STREETS, PARKING FACILITIES, INCLUDING CURB AND
 GUTTERS, WALLS, LOADING AREAS AND ASPHALT
 INTENDED USE: PARKING

TOTAL ACCESSIBLE PARKING: HANDICAP PARKING FOR
 ENTIRE PROJECT WILL BE PROVIDED BY OTHERS WITHIN
 MAIN PARKING ACROSS STREET.
 TOTAL PARKING: 17

PROPERTY ADDRESS: 610 CAMDEN

REFERENCE:
 LOT 4 & PART OF 5, BLK 20, N.C.B. 822
 CITY BLOCK MAP# 822, WARD# 4, BLOCK# 20-5,
 PER THE CITY OF SAN ANTONIO BLOCK MAP REC.

"I, ALICIA BOND, THE PROPERTY OWNER, ACKNOWLEDGE THAT THIS SITE PLAN SUBMITTED FOR THE PURPOSE OF REZONING THIS PROPERTY IS IN ACCORDANCE WITH ALL APPLICABLE PROVISIONS OF THE UNIFIED DEVELOPMENT CODE. ADDITIONALLY, I UNDERSTAND THAT CITY COUNCIL APPROVAL OF A SITE PLAN IN CONJUNCTION WITH A REZONING CASE DOES NOT RELIEVE ME FROM ADHERENCE TO ANY/ALL CITY-ADOPTED CODES AT THE TIME OF PLAN SUBMITTAL FOR BUILDING PERMITS."



11/14/13

PROJECT NO.
DATE: 11/14/13
DRAWN BY: JR DESIGNED BY: KWL
SCALE: 1" = 40'

CAMDEN ST.
 610 CAMDEN
 SAN ANTONIO, TEXAS 78215

SITE EXHIBIT

K Love
ENGINEERING
 Site Development Engineering Services
 Firm No. 11042
 www.kloveengineering.com (210) 485-5683