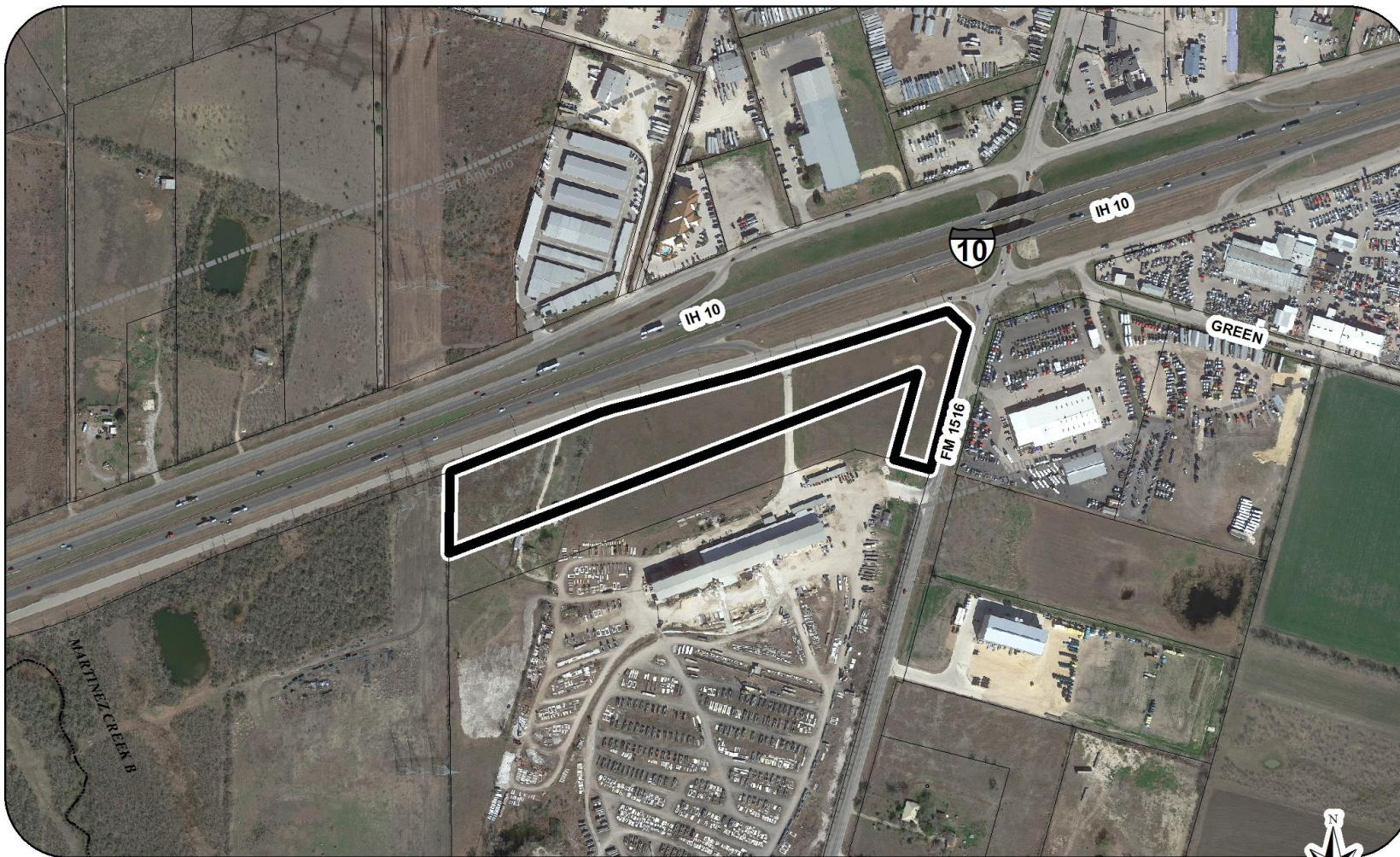

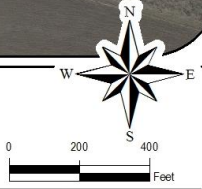


Attachment 2



Data Source: City of San Antonio Enterprise GIS, Base Map 811, BaseX Appraisal District.
 This document is prepared by the City of San Antonio. It is provided for informational purposes only and does not constitute a contract or any other legal instrument. The City of San Antonio expressly disclaims all liability for any errors, omissions, or inaccuracies in this document, including but not limited to the inclusion or exclusion of information, and makes no warranty, expressed or implied, regarding the accuracy, completeness, or reliability of the information provided. The City of San Antonio is not responsible for any damages, including but not limited to the loss of data, arising from the use of this document. The City of San Antonio is not responsible for any damages, including but not limited to the loss of data, arising from the use of this document.
 Map Created by: Gustavo Gutierrez
 Map Last Edited: 8/11/2016
 Map File Location: W:\Archived\Neighborhoods\Land_Use\Amendment\Amend_16096_H0E Corridor_B&W.mxd
 PDF Filename: 1608GG.pdf

 Subject Property



IH-10 E Corridor Perimeter Plan

2015 Aerial

City of San Antonio
 Planning and Community
 Development Department
 John M. Dugan, AICP
 Director
 CliffMortis Development and
 Business Services Center
 PO Box 933665
 San Antonio, TX 78293

