

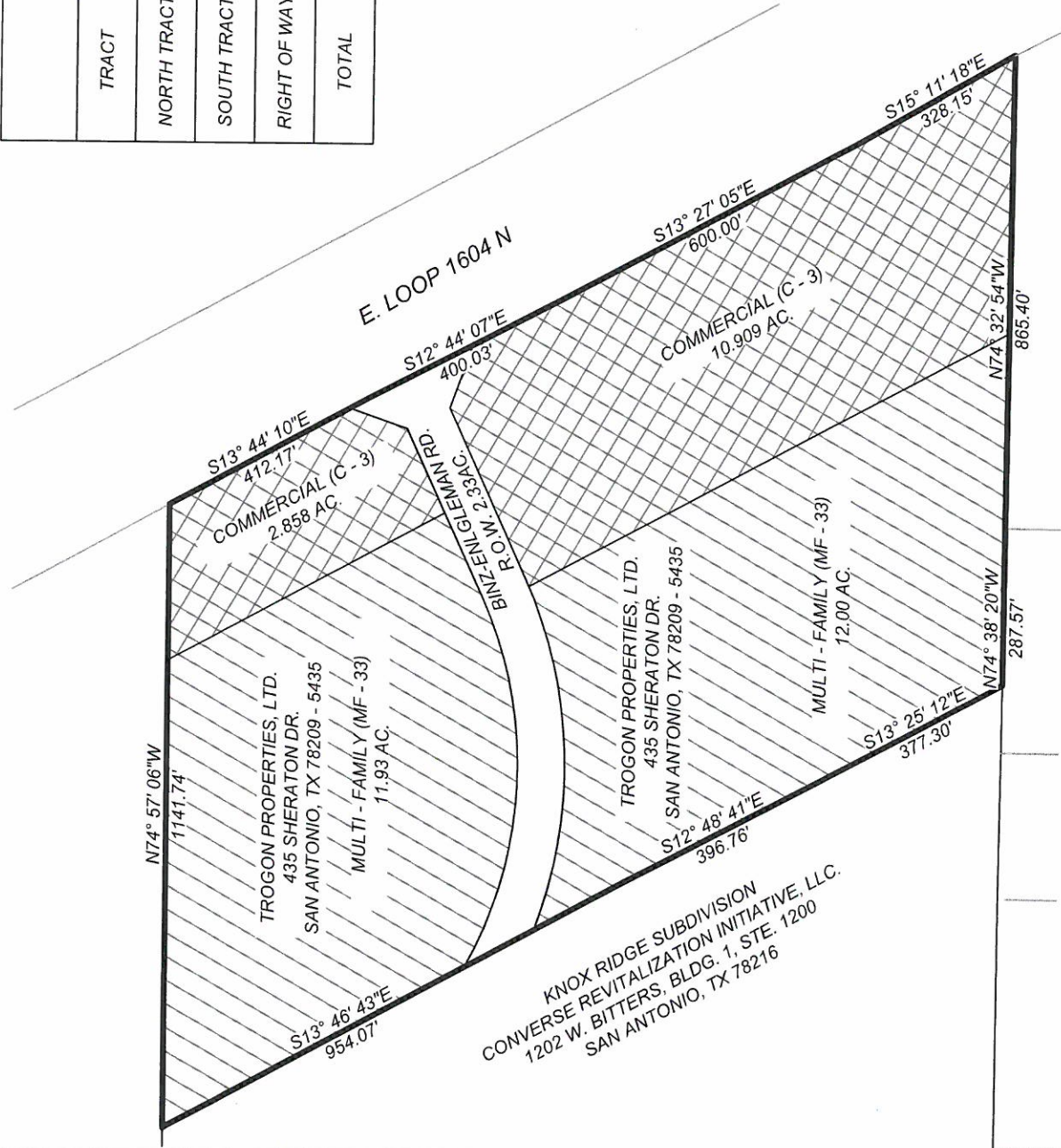
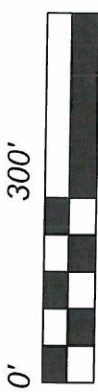
LAND USE TABLE			
TRACT	COMMERCIAL	MULTI - FAMILY	TOTAL UNIT ACREAGE
NORTH TRACT	2.858	11.930	14.788
SOUTH TRACT	10.909	12.000	22.909
RIGHT OF WAY	0.000	0.000	2.330
TOTAL	13.767	23.930	40.027

PROPOSED LAND USE:
MXD WITH COMMERCIAL AND MULTI - FAMILY

A 40.015 ACRE TRACT CONVEYED TO TROGON PROPERTIES, LTD. IN SPECIAL WARRANTY DEED RECORD IN VOLUME 15588, PAGE 1069 OF THE OFFICIAL PUBLIC RECORDS OF REAL PROPERTY BEXAR COUNTY, TEXAS.



SCALE: 1"=300'



TROGON PROPERTIES
SAN ANTONIO, TX
ZONING EXHIBIT



REVISIONS		ISSUE DATE
JOB NO 206-22-05	DESIGNER: CL	
DATE: JULY, 2017	CHECKED: CL	
DRAWN: JA		

THIS DOCUMENT HAS BEEN PRODUCED FROM MATERIAL THAT WAS STORED AND/OR TRANSMITTED ELECTRONICALLY AND MAY HAVE BEEN INADVERTENTLY ALTERED. RELY ONLY ON FINAL HARDCOPY MATERIALS BEARING THE CONSULTANT'S ORIGINAL SIGNATURE AND SEAL.