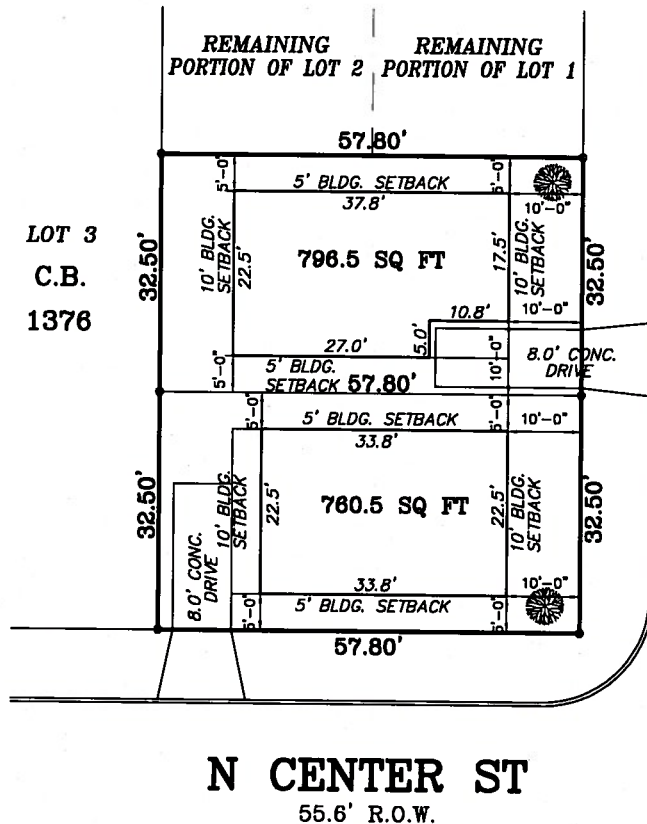


Site Plan



a 0.0862 acre site with two single family residential, two story building footprints at 796.5 sqs ft and 760.5 sq ft, for purposes of IDZ base zoning, shall be considered two lots at 1878.5 square feet each.

22017250

| | | |
|---|--|---------------------------------|
| <p>PRELIMINARY SITE PLAN DRAWN BY: JMG SCALE: 1"=20' DATE: 7-3-17</p> | <p>1002 N CENTER ST N 65 OF LOTS 1 & 2 C.B. 1376 EASTHOLME SUBDIVISION VOLUME 368, PAGE(S) 93 BEXAR COUNTY, TEXAS</p> | <p>TSTMANN LLC</p> |
|---|--|---------------------------------|