



# THE CITY OF OLMOS PARK

120 WEST EL PRADO DRIVE  
SAN ANTONIO, TEXAS 78212-2095



(210) 824-3281  
FAX (210) 826-5008  
WWW.OLMOSPARK.ORG

**MAYOR**

Ronald Hornberger

**COUNCIL**

Juliana Decamps

Casey Fry

Kenyon McDonald

Sharon Plant

Deb Bolner Prost

**STAFF**

Celia De Leon

*City Manager*

Diane Gonzales

*City Secretary*

Rene Valenciano

*Chief of Police*

Linc Surber

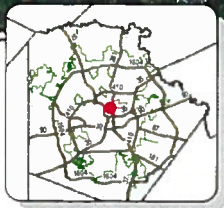
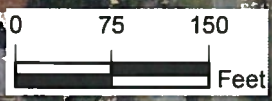
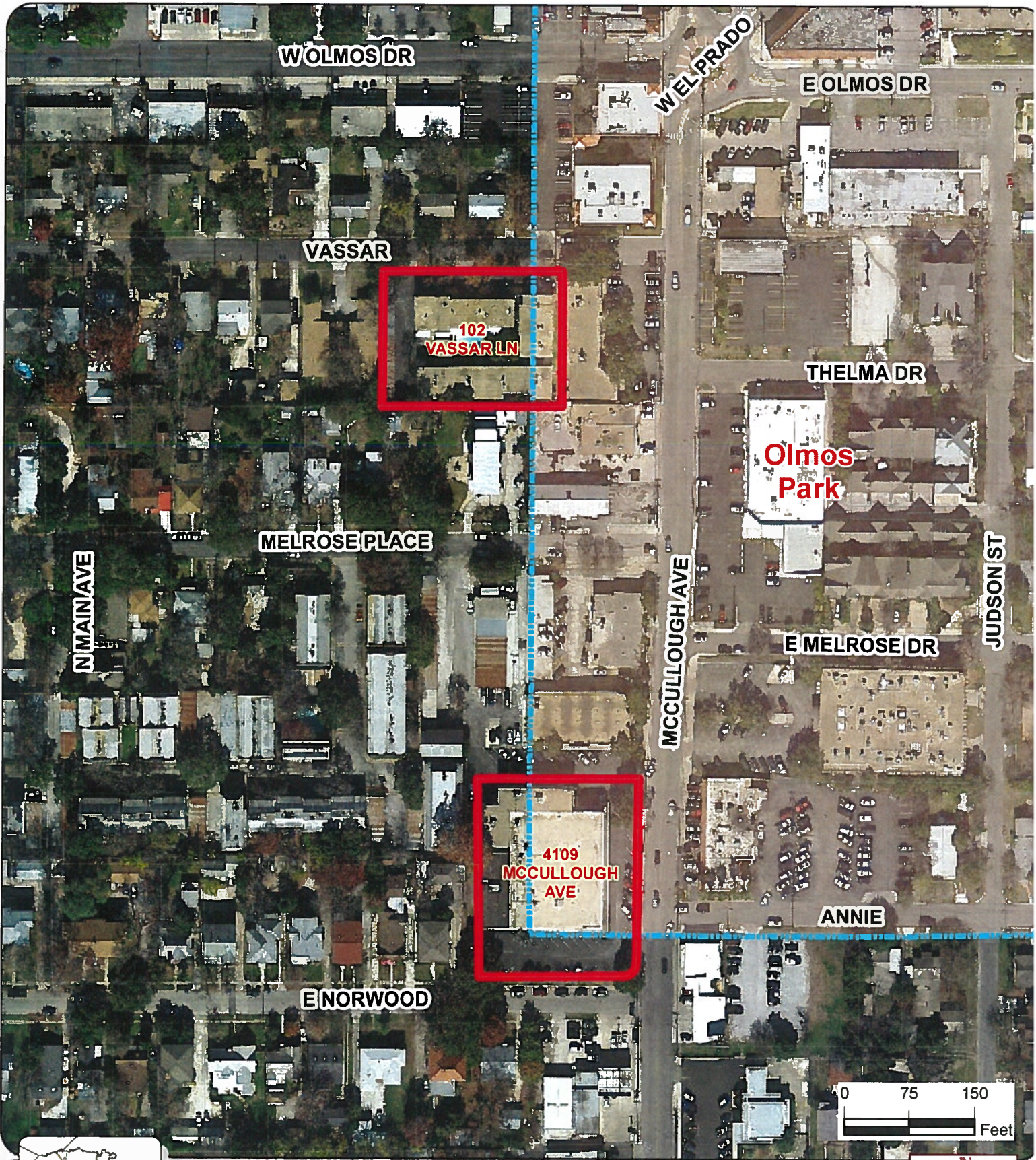
*Fire Chief*

Gilbert De Leon

*Director of Public Works*

The following real properties located along the McCullough Avenue corridor are shown as properties being taxed by both the City of San Antonio and the City of Olmos Park:

	ADDRESS	LEGAL DESCRIPTION	PROPERTY ID #
	5300 McCullough	07339-014-0261	0391011
	4901 McCullough	04048-017-0260	0174061
	4825 McCullough	07333-018-0162	0390921
	4701 McCullough	07332-019-0470	1128661
	4601 McCullough	04047-025-0010	0174036
	4109 McCullough	06557-003-0495	0379182
	108 Joy St.	04048-016-0171	0174052
	111 Zilla St.	04048-016-0261	1058798
	110 Horace	07332-019-0181	0390902
	109 Odell St.	07330-024-0100	0390848
	102 Vassar	08563-100-0000	0417677



-  Site
-  BCAD Parcels
-  Cities and Towns
-  City of San Antonio
-  Railroads



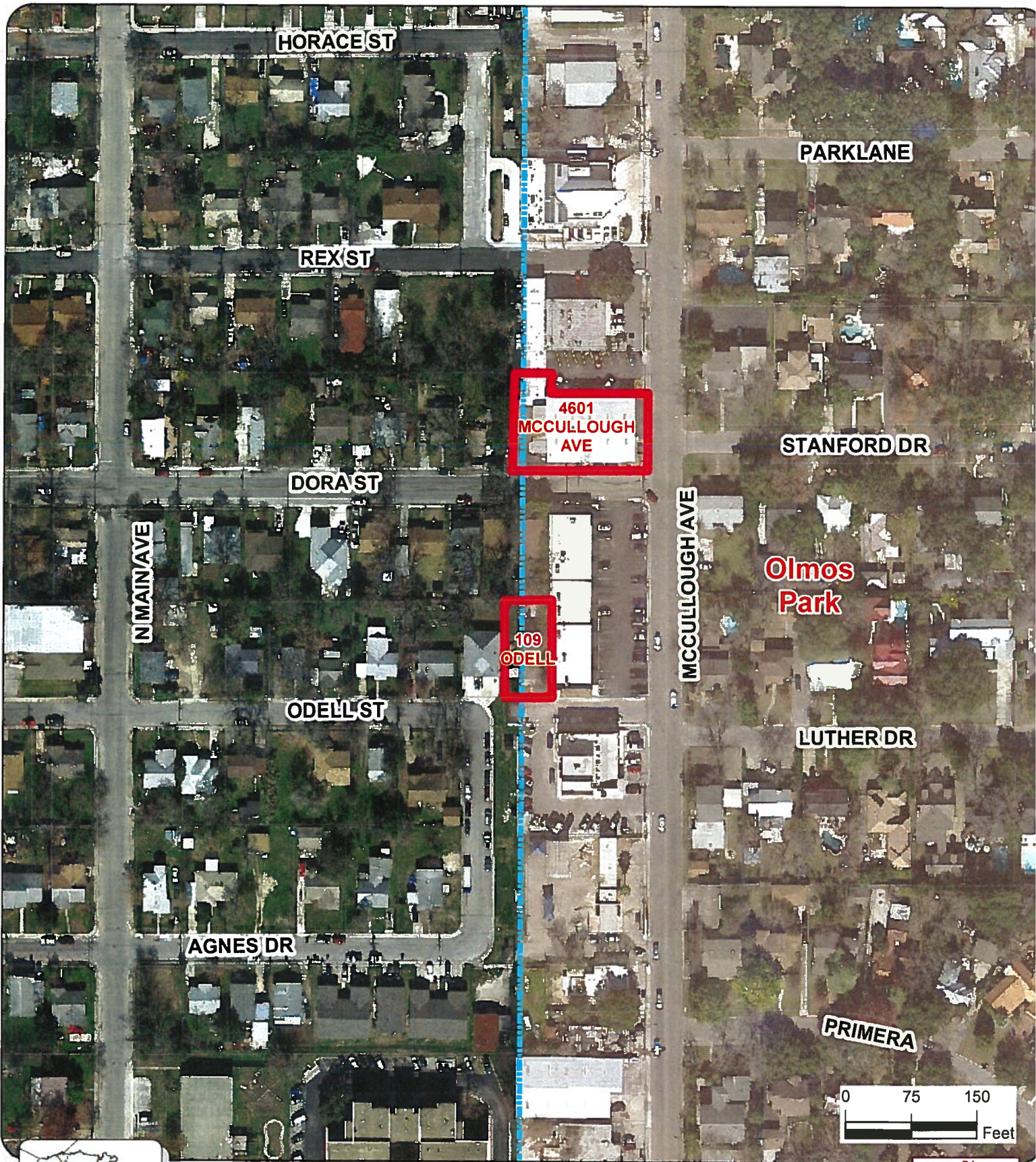
Data Source: City of San Antonio Enterprise GIS, Besta Metro 911, Besta Appraisal District  
 This map was prepared by the City of San Antonio. It is not intended to be used for any other purpose.  
 City of San Antonio, 111 Soledad St., 9th Floor, San Antonio, TX 78205  
 The City of San Antonio is not responsible for any errors or omissions in this map or for any consequences arising from the use of the information contained herein. The City of San Antonio is not responsible for any errors or omissions in this map or for any consequences arising from the use of the information contained herein.  
 The City of San Antonio is not responsible for any errors or omissions in this map or for any consequences arising from the use of the information contained herein.  
 The City of San Antonio is not responsible for any errors or omissions in this map or for any consequences arising from the use of the information contained herein.

# City of San Antonio

## CoSA/Olmos Park ILA

**City of San Antonio**  
 Information Technology Services Department  
 GIS Public Services Division  
 RiverView Towers  
 111 Soledad St. 9th Floor  
 San Antonio, TX 78205





- Site
- City of San Antonio
- BCAD Parcels
- Cities and Towns
- Railroads

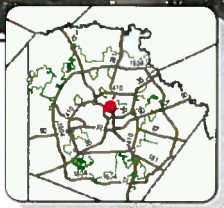


# City of San Antonio

## CoSA/Olmos Park ILA

**City of San Antonio**  
 Information Technology Services Department  
 GIS Public Services Division  
 Riverview Towers  
 111 Soledad St. 9th Floor  
 San Antonio, TX 78205

Data Source: City of San Antonio Enterprise GIS, Base Map 911, Base Appraisal District  
 This program is provided as a public service. The City of San Antonio is not responsible for any errors or omissions in the data or for any use of the data for purposes not intended by the City of San Antonio. The City of San Antonio is not responsible for any use of the data for purposes not intended by the City of San Antonio. The City of San Antonio is not responsible for any use of the data for purposes not intended by the City of San Antonio. The City of San Antonio is not responsible for any use of the data for purposes not intended by the City of San Antonio.



- Site
- City of San Antonio
- BCAD Parcels
- Cities and Towns
- ⚡ Railroads

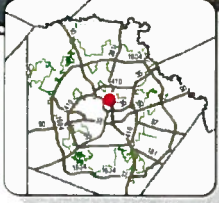


# City of San Antonio

## CoSA/Olmos Park ILA

**City of San Antonio**  
 Information Technology Services Department  
 GIS Public Services Division  
 RiverView Towers  
 111 Soledad St. 9th Floor  
 San Antonio, TX 78205

Data Source: City of San Antonio Enterprise GIS, Bexar Metro 911 Bexar Appraisal District  
 This map is for informational purposes only. It is not intended to be used as a legal document. The City of San Antonio does not warrant, guarantee, or make any representation regarding the use of the data or the information provided in this map. The City of San Antonio disclaims any liability for any errors, omissions, or inaccuracies in this map.  
 Map Last Edited: 5/17/2016  
 PDF Filename: 18050023.pdf  
 Map file location: W:\CoSA\Data\And\Offices\_FY2015\_2016\PlanningAndCommunityDevelopment\ILA\Map\Olmos Park.mxd



- City of San Antonio
- BCAD Parcels
- Cities and Towns
- Railroads



# City of San Antonio

## CoSA/Olmos Park ILA

**City of San Antonio**  
 Information Technology Services Department  
 GIS Public Services Division  
 Riverview Towers  
 111 Soledad St. 9th Floor  
 San Antonio, TX 78205

Data Source: City of San Antonio Enterprise GIS, Base: Metro 911, Buyer Appraisal District  
 This document represents a plan. The plan, as shown here, is provided for informational purposes only and is not intended to be used as a legal document. The City of San Antonio is not responsible for any errors or omissions in this plan. The City of San Antonio does not warrant, guarantee, or make any representation regarding the accuracy or reliability of the information provided in this plan. The City of San Antonio is not responsible for any errors or omissions in this plan. The plan is provided as a service to the public and is not intended to be used as a legal document. The City of San Antonio is not responsible for any errors or omissions in this plan.

Map Date Edited: 5/17/2016  
 PDF Filename: 10250222.pdf  
 Map File Location: W:\CoSADep\GIS\GIS\FY\_2015\_2016\Plan\engAndCommunityDevelopment\Olmos Park\Olmos Park.mxd