



# FORD ENGINEERING, INC

Date: April 25, 2018  
Project No: 1800.3935

## FIELD NOTES DESCRIPTION 234.07 ACRES

A 234.07 acre tract of land, situated in the Jose Antonio De La Garza Survey No. 3, County Block 4006, being a portion of that certain remainder tract of land called to contain 834.145 acres conveyed to SA Miers, LTD in Volume 15749, Page 931 of the Official Public Records of Real Property of Bexar County, Texas; being more particularly described as follows:

**BEGINNING:** at a ½ inch iron rod (N = 13,648,103.136, E = 2,130,307.950) with cap marked “CDS” found on the Northeastern line of Pleasanton Road shown to be a 80 foot R.O.W. on a Bexar County Road Department Map, File No. B-882, dated August, 1962, for the Southwestern corner of that certain 47.841 acre tract of land conveyed to San Antonio Water System in Volume 14345, Page 781 of the Official Public Records of Real Property of Bexar County, Texas, a corner of the 834.145 acre remainder tract, for the Westernmost Northwestern corner of this tract of land;

**THENCE:** S 89°05’05” E – 1378.09 feet along the Southern line of the said 47.841 acre tract, a line of 834.145 acre remainder tract to a ½ inch iron rod found for the Southeastern corner of the said 47.841 acre tract, a corner of the 834.145 acre remainder tract, for a corner of this tract of land;

**THENCE:** N 39°23’02” E – 991.62 feet along the Southeastern line of the said 47.841 acre tract, a line of the 834.145 acre remainder tract of land, to a ½ inch iron rod with cap marked “PCI” found for a corner of the said 47.841 acre tract, a corner of the 834.145 acre remainder tract, for a corner of this tract of land;

**THENCE:** N 27°03’19” E – 251.14 feet continuing along the Southeastern line of the said 47.841 acre tract, a line of the 834.145 acre remainder tract to a ½ inch iron rod found for the Easternmost Northeastern corner of the said 47.841 acre tract, a corner of the 834.145 acre remainder tract, for a corner of this tract of land;

**THENCE:** N 62°59’01” W – 250.12 feet continuing along a line of the said 47.841 acre tract, a line of the said 834.145 acre remainder tract to a ½ inch iron rod with cap marked “PCI” found on the Southeastern line of Mitchell Lake called to contain 876.91 acres conveyed to the City of San Antonio in Volume 4999, Page 728 of the Deed Records of Bexar County, Texas, for a corner of the said 47.841 acre tract, a corner of the said 834.145 acre remainder tract of land, for a corner of this tract of land;



# FORD ENGINEERING, INC

**THENCE:** N 26-50'08" E – 109.86 feet along the Southeastern line of said Mitchell Lake to a ½ inch iron rod found for a corner of said Mitchell Lake, a corner of the said 834.145 acre remainder tract, for a corner of this tract of land;

**THENCE:** N 13°35'24" E – 75.72 feet continuing along the Southeastern line of said Mitchell Lake, a line of the said 834.145 acre remainder tract, to a ½ inch iron rod with cap marked "Ford Eng Inc" set for the Northernmost corner of this tract of land, from which a ½ inch iron rod found for a corner of said Mitchell Lake bears N 13°35'24" E – 202.01 feet;

**THENCE:** S 62°59'01" E – 838.67 feet across the said 834.145 acre remainder tract to a ½ inch iron rod with cap marked "Ford Eng Inc" set for a corner of this tract of land;

**THENCE:** S 00°52'26" W – 874.71 feet continuing across the said 834.145 acre remainder tract to a ½ inch iron rod (N = 13,648,100.286, E = 2,133,008.826) with broken cap found for the Northwestern corner of that certain 285.47 acre tract of land conveyed to San Antonio Water System in Volume 18949, Page 495 of the Official Public Records of Bexar County, Texas, for a corner of this tract of land;

**THENCE:** S 33°12'51" W – 276.51 feet along a Western line of the said 285.47 acre tract, a line of the said 834.145 acre remainder tract to a 4 inch cedar fence post found for a corner of the said 285.47 acre tract, a corner of the said 834.145 acre remainder tract, for a corner of this tract of land;

**THENCE:** S 48°26'51" E – 39.56 feet to a point in the center of the Mitchell Lake Outfall Ditch, being the same center of a Drain (no width defined) as described in an Ordinance conveyed to the City of San Antonio by Sidney J. Brooks and Cora Ogden in Volume 1309, Page 248 of the Deed Records of Bexar County, for a corner of the said 285.47 acre tract, a corner of the said 834.145 acre remainder tract, for a corner of this tract of land;

**THENCE:** With the center of the Mitchell Lake Outfall Ditch, the Southwestern line of the said 285.47 acre tract, a line of the said 834.145 acre remainder tract and the Northeastern line of this tract of land as follows:

- S 42°08'28" E – 86.90 feet to an angle point;
- S 49°06'54" E – 398.10 feet to an angle point;
- S 27°42'46" E – 87.86 feet to an angle point;
- S 29°10'21" E – 123.35 feet to an angle point;
- S 06°40'57" E – 177.98 feet to an angle point;
- S 06°25'00" W – 131.72 feet to an angle point;
- S 15°16'33" E – 80.90 feet to an angle point;
- S 04°12'13" E – 76.11 feet to an angle point;
- S 25°40'09" E – 105.25 feet to an angle point;
- S 22°31'02" E – 78.85 feet to an angle point;



# FORD ENGINEERING, INC

S 13°54'53" E – 133.97 feet to an angle point;  
S 00°29'44" W – 91.12 feet to an angle point;  
S 27°23'57" E – 113.22 feet to an angle point;  
S 22°55'05" E – 43.34 feet to an angle point;  
S 07°16'17" E – 48.47 feet to an angle point;  
S 35°16'54" E – 37.74 feet to an angle point;  
S 68°40'03" E – 38.29 feet to an angle point;  
S 86°47'48" E – 28.26 feet to an angle point;  
N 85°33'33" E – 40.40 feet to an angle point;  
S 40°11'11" E – 61.38 feet to an angle point;  
S 45°09'20" E – 108.66 feet to an angle point;  
S 67°13'23" E – 76.13 feet to an angle point;  
S 43°12'56" E – 80.31 feet to an angle point;  
S 31°32'29" E – 69.46 feet to an angle point;  
S 51°20'01" E – 44.06 feet to an angle point;  
S 42°52'44" E – 57.99 feet to an angle point;  
S 17°14'35" E – 41.29 feet to an angle point;  
S 55°47'13" E – 34.71 feet to an angle point;  
S 35°07'14" E – 38.18 feet to an angle point;  
S 17°18'30" E – 42.90 feet to an angle point;  
S 28°53'23" E – 30.60 feet to an angle point;  
S 71°24'48" E – 45.85 feet to an angle point;  
S 32°23'18" E – 63.78 feet to an angle point;  
S 37°42'57" E – 29.23 feet to an angle point;  
S 16°51'47" W – 24.79 feet to an angle point;  
S 27°33'27" E – 95.58 feet to an angle point;  
S 57°33'27" E – 59.54 feet to an angle point;  
S 54°02'28" E – 69.80 feet to an angle point;  
S 66°02'26" E – 95.18 feet to an angle point;  
S 89°36'08" E – 37.18 feet to an angle point;  
N 70°15'58" E – 36.75 feet to an angle point;  
S 79°40'59" E – 71.92 feet to an angle point;  
S 59°41'46" E – 26.32 feet to an angle point;  
S 21°10'27" E – 27.35 feet to an angle point;  
S 44°35'42" E – 68.13 feet to an angle point;  
S 67°49'48" E – 21.72 feet to an angle point;  
N 85°40'36" E – 57.80 feet to an angle point;  
S 78°59'04" E – 48.22 feet to an angle point;  
S 47°47'03" E – 87.33 feet to an angle point;  
S 68°20'12" E – 38.65 feet to an angle point;  
S 49°43'40" E – 42.17 feet to an angle point;  
S 72°53'57" E – 113.39 feet to an angle point;  
S 49°43'39" E – 32.91 feet to an angle point;



# FORD ENGINEERING, INC

S 23°22'49" E – 31.75 feet to an angle point;  
S 52°37'55" E – 109.17 feet to an angle point;  
S 64°31'15" E – 44.87 feet to an angle point;  
S 66°40'26" E – 79.24 feet to an angle point;  
S 89°32'36" E – 35.07 feet to an angle point;  
S 50°35'12" E – 91.85 feet to an angle point;  
S 07°58'12" E – 26.16 feet to an angle point;  
S 31°16'07" E – 46.54 feet to an angle point;  
S 28°02'30" E – 133.84 feet to an angle point;  
S 32°48'06" E – 34.19 feet to an angle point;  
S 04°45'43" W – 82.10 feet to an angle point;  
S 19°03'06" E – 50.03 feet to an angle point;  
S 30°40'14" E – 33.72 feet to an angle point;  
S 14°47'01" E – 32.72 feet to an angle point;  
S 58°23'45" E – 22.32 feet to an angle point;  
S 26°47'41" E – 31.29 feet to an angle point;  
S 64°56'25" E – 94.67 feet to an angle point;  
N 79°39'13" E – 110.05 feet to an angle point;  
S 77°39'45" E – 57.04 feet to an angle point;  
N 83°00'13" E – 33.47 feet to an angle point;  
S 28°31'19" E – 19.91 feet to an angle point;  
N 89°28'53" E – 19.24 feet to an angle point;  
N 52°11'25" E – 13.72 feet to an angle point;  
S 88°58'27" E – 15.53 feet to an angle point;  
N 63°34'17" E – 20.85 feet to an angle point;  
S 71°38'50" E – 58.35 feet to an angle point;  
S 49°29'40" E – 38.15 feet to an angle point;  
S 27°51'37" E – 16.93 feet to an angle point;  
S 86°47'20" E – 36.54 feet to an angle point;  
S 78°46'45" E – 66.90 feet to an angle point;  
S 41°43'49" E – 36.46 feet to an angle point;  
S 07°11'48" W – 23.70 feet to an angle point;  
S 11°19'52" W – 27.68 feet to an angle point;  
S 21°41'02" W – 44.56 feet to an angle point;  
S 15°22'24" E – 28.49 feet to an angle point;  
S 08°51'35" W – 56.82 feet to an angle point;  
S 03°35'47" E – 27.45 feet to an angle point;  
S 21°02'33" E – 19.21 feet to an angle point;  
S 34°12'19" E – 39.23 feet to an angle point;  
S 04°01'09" E – 29.52 feet to an angle point;  
S 29°02'50" W – 24.90 feet to an angle point;  
S 15°26'54" E – 20.82 feet to an angle point;  
S 01°51'44" W – 133.99 feet to an angle point;



# FORD ENGINEERING, INC

S 11°05'34" E – 22.46 feet to an angle point;  
S 23°57'33" E – 21.06 feet to an angle point;  
S 50°06'26" E – 37.38 feet to an angle point;  
S 37°44'08" E – 34.90 feet to an angle point;  
S 29°48'50" E – 32.58 feet to an angle point;  
S 15°19'37" E – 34.19 feet to an angle point;  
S 29°11'37" E – 39.81 feet to an angle point;  
S 09°25'54" E – 14.49 feet to an angle point;  
S 05°47'16" E – 24.85 feet to an angle point;

**THENCE:** S 01°51'48" W – 45.29 feet continuing along the said Mitchell Lake Outfall Ditch to a point of intersection of the center of Mitchell Lake Outfall Ditch and the Northeastern bank of the Medina River, for a corner of the said 285.47 acre tract and the Southeastern corner of this tract;

**THENCE:** Along the Northeastern and Eastern bank of the Medina River as follows;

N 50°54'05" W – 20.01 feet to an angle point;  
N 33°45'26" W – 64.87 feet to an angle point;  
N 11°54'14" W – 76.73 feet to an angle point;  
N 51°36'43" W – 178.36 feet to an angle point;  
S 72°19'40" W – 123.53 feet to an angle point;  
S 46°40'41" W – 172.91 feet to an angle point;  
S 67°48'53" W – 68.09 feet to an angle point;  
S 77°52'53" W – 48.06 feet to an angle point;  
S 86°56'20" W – 15.92 feet to an angle point;  
S 28°36'52" W – 171.75 feet to an angle point;  
S 21°27'10" W – 56.60 feet to an angle point;  
S 07°26'17" E – 51.65 feet to an angle point;  
S 05°08'36" W – 143.15 feet to an angle point;  
S 23°00'31" W – 134.93 feet to an angle point;  
S 13°51'56" W – 98.63 feet to an angle point;  
S 49°48'01" W – 151.47 feet to an angle point;  
N 85°41'25" W – 86.63 feet to an angle point;  
S 87°10'49" W – 26.43 feet to an angle point;  
N 72°40'51" W – 118.04 feet to an angle point;  
N 40°46'43" W – 34.04 feet to an angle point;  
N 51°31'36" W – 127.09 feet to an angle point;  
N 46°21'43" W – 68.39 feet to an angle point;  
N 65°20'23" W – 212.35 feet to an angle point;  
N 37°33'47" W – 148.60 feet to an angle point;  
N 00°12'25" E – 126.75 feet to an angle point;  
N 06°07'20" W – 89.83 feet to an angle point;



# FORD ENGINEERING, INC

N 09°01'31" E – 26.04 feet to an angle point;  
N 26°20'56" W – 167.63 feet to an angle point;  
N 28°12'01" W – 74.74 feet to an angle point;  
N 44°26'51" W – 53.76 feet to an angle point;  
N 55°22'29" W – 53.30 feet to an angle point;  
N 44°42'32" W – 75.52 feet to an angle point;  
N 59°32'44" W – 117.44 feet to an angle point;  
N 48°20'56" W – 90.04 feet to an angle point;  
N 45°48'25" W – 107.08 feet to an angle point;  
N 07°13'58" W – 110.94 feet to an angle point;  
N 17°46'06" W – 116.34 feet to an angle point;  
N 42°03'11" W – 82.12 feet to an angle point;  
N 44°48'01" W – 34.65 feet to an angle point;  
N 42°59'10" W – 91.16 feet to an angle point;  
N 60°36'42" W – 76.22 feet to an angle point;  
N 71°38'47" W – 57.64 feet to an angle point;  
S 79°06'14" W – 66.87 feet to an angle point;  
S 78°39'49" W – 46.24 feet to an angle point;  
S 43°57'21" W – 116.13 feet to an angle point;  
S 67°19'04" W – 40.35 feet to an angle point;  
S 67°29'40" W – 68.66 feet to an angle point;  
S 73°09'47" W – 76.75 feet to an angle point;  
S 67°57'52" W – 49.98 feet to an angle point;  
S 82°15'25" W – 58.86 feet to an angle point;  
N 80°16'24" W – 136.49 feet to an angle point;  
N 86°37'31" W – 52.43 feet to an angle point;  
S 76°28'43" W – 29.70 feet to an angle point;  
N 89°37'36" W – 35.89 feet to an angle point;  
S 75°17'27" W – 58.97 feet to an angle point;  
S 35°03'39" W – 13.59 feet to an angle point;  
S 73°26'24" W – 77.83 feet to an angle point;  
S 71°46'42" W – 65.24 feet to an angle point;  
N 70°29'02" W – 84.59 feet to an angle point;  
S 73°55'21" W – 65.68 feet to an angle point;  
S 88°05'32" W – 70.98 feet to an angle point;  
N 83°08'36" W – 246.69 feet to an angle point;  
N 78°26'36" W – 69.17 feet to an angle point;  
N 50°05'15" W – 26.81 feet to an angle point;  
N 86°50'07" W – 17.02 feet to an angle point;  
N 65°39'44" W – 93.75 feet to an angle point;  
N 39°25'39" W – 134.21 feet to an angle point;  
N 15°26'09" W – 193.29 feet to an angle point;  
N 13°00'41" W – 269.78 feet to an angle point;



# FORD ENGINEERING, INC

N 17°24'54" W – 101.44 feet to an angle point;  
N 20°19'22" W – 120.29 feet to an angle point;  
N 21°36'08" W – 32.03 feet to an angle point;  
N 02°14'52" E – 58.23 feet to an angle point;  
N 04°19'16" W – 76.45 feet to an angle point;  
N 08°58'14" W – 36.47 feet to an angle point;  
N 27°52'59" E – 42.35 feet to an angle point;  
N 46°23'11" E – 39.87 feet to an angle point;  
N 38°23'34" E – 69.01 feet to an angle point;  
N 10°48'13" E – 20.31 feet to an angle point;  
N 31°32'52" E – 86.40 feet to an angle point;  
N 51°09'05" E – 31.09 feet to an angle point;  
N 54°31'33" E – 30.90 feet to an angle point;  
N 85°08'11" E – 50.60 feet to an angle point;  
N 85°53'04" E – 73.85 feet to an angle point;  
S 08°28'34" E – 11.38 feet to an angle point;  
N 59°42'29" E – 42.19 feet to an angle point;  
N 38°06'41" E – 19.09 feet to an angle point;  
N 16°10'37" E – 49.40 feet to an angle point;  
N 06°01'57" E – 21.96 feet to an angle point;  
N 55°00'27" E – 22.79 feet to an angle point;  
N 06°34'28" E – 40.13 feet to an angle point;  
N 74°55'23" W – 11.15 feet to an angle point;  
N 11°41'56" E – 34.95 feet to an angle point;  
N 06°44'17" W – 22.36 feet to an angle point;  
N 25°36'19" E – 29.53 feet to an angle point;  
N 08°56'51" W – 20.20 feet to an angle point;  
N 28°20'06" E – 19.78 feet to an angle point;  
N 06°39'22" E – 21.34 feet to an angle point;  
N 04°23'01" W – 54.47 feet to an angle point;  
N 10°47'01" W – 29.29 feet to an angle point;  
N 31°33'45" W – 58.26 feet to an angle point;  
N 07°44'42" W – 31.55 feet to an angle point;  
N 04°20'09" W – 74.94 feet to an angle point;  
N 39°39'59" W – 31.17 feet to an angle point;  
N 20°15'24" E – 21.49 feet to an angle point;  
N 24°43'34" E – 33.99 feet to an angle point;  
S 73°12'10" E – 10.43 feet to an angle point;  
S 86°09'27" E – 11.49 feet to an angle point;  
S 52°02'20" E – 51.76 feet to an angle point;  
S 11°46'40" E – 18.91 feet to an angle point;  
S 00°23'14" E – 32.82 feet to an angle point;  
S 16°33'10" E – 33.62 feet to an angle point;



# FORD ENGINEERING, INC

S 53°06'25" E – 28.03 feet to an angle point;  
S 77°13'33" E – 37.73 feet to an angle point;  
S 73°30'50" E – 25.94 feet to an angle point;  
N 65°42'15" E – 36.28 feet to an angle point;  
S 80°45'38" E – 18.69 feet to an angle point;  
S 79°50'28" E – 51.95 feet to an angle point;  
N 23°18'05" E – 31.15 feet to an angle point;  
N 31°05'26" E – 26.50 feet to an angle point;  
N 72°16'09" E – 14.77 feet to an angle point;  
N 36°35'16" E – 12.33 feet to an angle point;  
N 46°24'11" E – 22.68 feet to an angle point;  
N 08°13'49" E – 29.12 feet to an angle point;  
N 17°06'42" E – 17.12 feet to an angle point;  
N 65°25'40" E – 14.56 feet to an angle point;  
N 18°58'29" E – 47.80 feet to an angle point;  
N 29°30'20" E – 21.57 feet to an angle point;  
N 03°24'01" E – 45.11 feet to an angle point;  
N 21°29'36" E – 37.81 feet to an angle point;  
N 09°48'40" W – 29.03 feet to an angle point;  
N 08°06'47" E – 30.27 feet to an angle point;  
N 10°24'14" E – 58.23 feet to an angle point;  
N 03°10'54" E – 44.90 feet to an angle point;  
N 17°26'51" E – 45.18 feet to an angle point;  
N 21°44'48" W – 9.20 feet to an angle point;  
S 85°43'59" E – 11.23 feet to an angle point;  
N 27°21'46" E – 12.43 feet to an angle point;  
N 54°55'04" E – 22.41 feet to an angle point;  
N 01°47'33" E – 41.85 feet to an angle point;  
N 02°07'00" W – 61.64 feet to an angle point;  
N 14°34'46" W – 31.85 feet to an angle point;  
N 32°50'26" W – 62.66 feet to an angle point;  
N 46°38'05" W – 37.97 feet to an angle point;  
N 75°27'31" W – 59.52 feet to an angle point;  
N 81°40'07" W – 20.97 feet to an angle point;  
S 82°31'07" W – 45.00 feet to an angle point;  
S 24°27'50" W – 53.89 feet to an angle point;

**THENCE:** N 82°22'51" W – 7.93 feet continuing with the bank of the Medina River to a calculated point of the intersection of the bank of the Medina River and a line of the remainder of a 17.39 acre tract conveyed to Nat Perez in Volume 4127, Page 486 of the Deed Records of Bexar County, Texas;





# FORD ENGINEERING, INC

**THENCE:** N 09°56'19" W – along an Eastern line of the remainder of the said 17.39 acre tract, at 40.84 feet pass a 1 inch pipe with pinched top found, **a distance in all of 186.91 feet** to a 1 inch pipe with pinched top found for a corner of the remainder of the said 17.39 acre tract, for a corner of this tract of land;

**THENCE:** N 44°29'34" W – 118.86 feet continuing along an Eastern line of the remainder of the said 17.39 acre tract to a ½ inch iron pipe found for a corner of the said 17.39 acre tract, for a corner of this tract of land;

**THENCE:** N 82°30'46" W – 230.03 feet continuing along a Northern line of the remainder of the said 17.39 acre tract to a ½ inch iron rod with cap marked "Ford Eng Inc" set for a corner of the said 17.39 acre tract, for a corner of this tract of land;

**THENCE:** S 67°49'22" W – 234.00 feet continuing along a Northern line of the remainder of the said 17.39 acre tract to a ½ inch iron pipe found for a corner of the said 17.39 acre tract, the Easternmost corner of the remainder of a 7.615 acre tract conveyed to Mariano M. Perez in Volume 5495, Page 676 of the Official Public Records of Real Property of Bexar County, Texas, for a corner of this tract of land;

**THENCE:** N 67°46'37" W – along a Northern line of the remainder of the said 7.615 acre tract, at 59.63 feet pass a ½ inch iron rod found, **a distance in all of 215.51 feet** to a chiseled "X" set on concrete at the base of Fence Corner, for a corner of the said 7.615 acre tract, for a corner of this tract of land;

**THENCE:** N 79°08'00" W – 436.60 feet continuing along a Northern line of the remainder of the said 7.615 acre tract to a ½ inch iron rod with cap marked "Ford Eng Inc" set at a fence corner, for a corner of the said 7.615 acre tract, for a corner of this tract of land;

**THENCE:** S 82°14'00" W – 541.73 feet continuing along a Northern line of the remainder of the said 7.615 acre tract to a ½ inch iron rod (N 13,647,154.720, E = 2,130,832.546) found on the Northeastern line of said Pleasanton Rod for the Northwestern corner of the said 7.615 acre tract, for a corner of this tract of land, from which a pinched pipe found for the Southwestern corner of the said 7.615 acre tract, the Northwestern corner of the remainder of the said 17.39 acre tract bears S 25°11'11" E – 288.10 feet;

**THENCE:** N 25°01'53" W – 615.90 feet along the Northeastern line of said Pleasanton Road to a ½ inch iron rod found for a corner of said Pleasanton Road, for a corner of this tract of land;

**THENCE:** N 34°04'13" W – 471.25 feet continuing along the Northeastern line of said Pleasanton Road to the **POINT OF BEGINNING** and containing 234.07 acres of land, *according to a survey made on the ground under my supervision*



# FORD ENGINEERING, INC

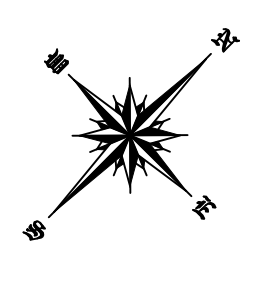
Corresponding plat prepared.  
1800.3935.docx

***BEARINGS AND COORDINATES ARE BASED ON LAMBERT GRID, TEXAS STATE PLANE COORDINATES, SOUTH CENTRAL ZONE NAD 83/93; COORDINATES SHOWN HEREON HAVE AN APPLIED SURFACE SCALE FACTOR OF 1.00017.***

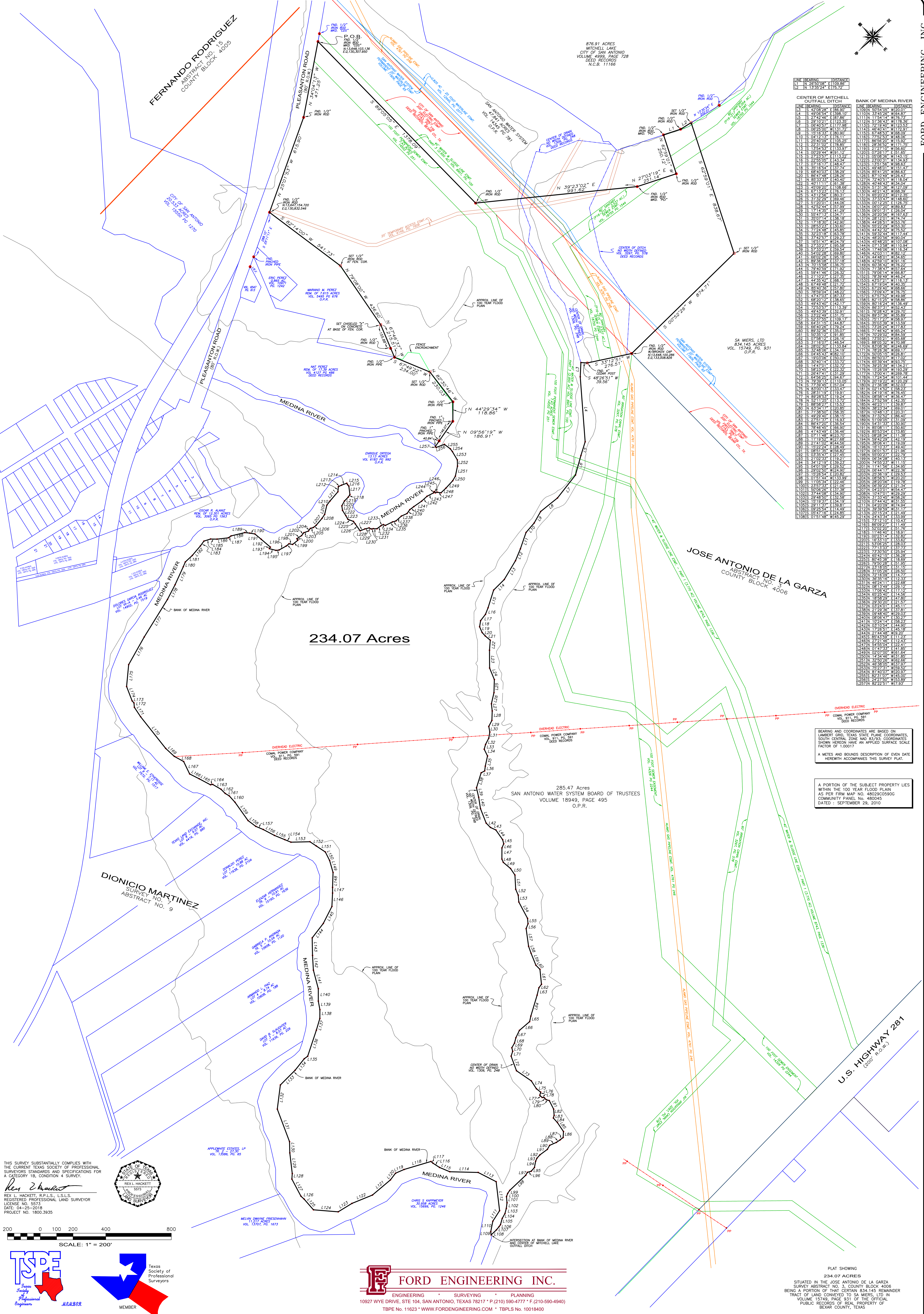


---

Rex L. Hackett, R.P.L.S., L.S.L.S.  
Registered Professional Land Surveyor  
License Number 5573



LINE BEARING	DISTANCE	LINE BEARING	DISTANCE
N 13°32'24" E	175.72	L109N	502.00
N 13°32'24" E	175.72	L110N	502.00
N 13°32'24" E	175.72	L111N	502.00
N 13°32'24" E	175.72	L112N	502.00
N 13°32'24" E	175.72	L113N	502.00
N 13°32'24" E	175.72	L114N	502.00
N 13°32'24" E	175.72	L115N	502.00
N 13°32'24" E	175.72	L116N	502.00
N 13°32'24" E	175.72	L117N	502.00
N 13°32'24" E	175.72	L118N	502.00
N 13°32'24" E	175.72	L119N	502.00
N 13°32'24" E	175.72	L120N	502.00
N 13°32'24" E	175.72	L121N	502.00
N 13°32'24" E	175.72	L122N	502.00
N 13°32'24" E	175.72	L123N	502.00
N 13°32'24" E	175.72	L124N	502.00
N 13°32'24" E	175.72	L125N	502.00
N 13°32'24" E	175.72	L126N	502.00
N 13°32'24" E	175.72	L127N	502.00
N 13°32'24" E	175.72	L128N	502.00
N 13°32'24" E	175.72	L129N	502.00
N 13°32'24" E	175.72	L130N	502.00
N 13°32'24" E	175.72	L131N	502.00
N 13°32'24" E	175.72	L132N	502.00
N 13°32'24" E	175.72	L133N	502.00
N 13°32'24" E	175.72	L134N	502.00
N 13°32'24" E	175.72	L135N	502.00
N 13°32'24" E	175.72	L136N	502.00
N 13°32'24" E	175.72	L137N	502.00
N 13°32'24" E	175.72	L138N	502.00
N 13°32'24" E	175.72	L139N	502.00
N 13°32'24" E	175.72	L140N	502.00
N 13°32'24" E	175.72	L141N	502.00
N 13°32'24" E	175.72	L142N	502.00
N 13°32'24" E	175.72	L143N	502.00
N 13°32'24" E	175.72	L144N	502.00
N 13°32'24" E	175.72	L145N	502.00
N 13°32'24" E	175.72	L146N	502.00
N 13°32'24" E	175.72	L147N	502.00
N 13°32'24" E	175.72	L148N	502.00
N 13°32'24" E	175.72	L149N	502.00
N 13°32'24" E	175.72	L150N	502.00
N 13°32'24" E	175.72	L151N	502.00
N 13°32'24" E	175.72	L152N	502.00
N 13°32'24" E	175.72	L153N	502.00
N 13°32'24" E	175.72	L154N	502.00
N 13°32'24" E	175.72	L155N	502.00
N 13°32'24" E	175.72	L156N	502.00
N 13°32'24" E	175.72	L157N	502.00
N 13°32'24" E	175.72	L158N	502.00
N 13°32'24" E	175.72	L159N	502.00
N 13°32'24" E	175.72	L160N	502.00
N 13°32'24" E	175.72	L161N	502.00
N 13°32'24" E	175.72	L162N	502.00
N 13°32'24" E	175.72	L163N	502.00
N 13°32'24" E	175.72	L164N	502.00
N 13°32'24" E	175.72	L165N	502.00
N 13°32'24" E	175.72	L166N	502.00
N 13°32'24" E	175.72	L167N	502.00
N 13°32'24" E	175.72	L168N	502.00
N 13°32'24" E	175.72	L169N	502.00
N 13°32'24" E	175.72	L170N	502.00
N 13°32'24" E	175.72	L171N	502.00
N 13°32'24" E	175.72	L172N	502.00
N 13°32'24" E	175.72	L173N	502.00
N 13°32'24" E	175.72	L174N	502.00
N 13°32'24" E	175.72	L175N	502.00
N 13°32'24" E	175.72	L176N	502.00
N 13°32'24" E	175.72	L177N	502.00
N 13°32'24" E	175.72	L178N	502.00
N 13°32'24" E	175.72	L179N	502.00
N 13°32'24" E	175.72	L180N	502.00
N 13°32'24" E	175.72	L181N	502.00
N 13°32'24" E	175.72	L182N	502.00
N 13°32'24" E	175.72	L183N	502.00
N 13°32'24" E	175.72	L184N	502.00
N 13°32'24" E	175.72	L185N	502.00
N 13°32'24" E	175.72	L186N	502.00
N 13°32'24" E	175.72	L187N	502.00
N 13°32'24" E	175.72	L188N	502.00
N 13°32'24" E	175.72	L189N	502.00
N 13°32'24" E	175.72	L190N	502.00
N 13°32'24" E	175.72	L191N	502.00
N 13°32'24" E	175.72	L192N	502.00
N 13°32'24" E	175.72	L193N	502.00
N 13°32'24" E	175.72	L194N	502.00
N 13°32'24" E	175.72	L195N	502.00
N 13°32'24" E	175.72	L196N	502.00
N 13°32'24" E	175.72	L197N	502.00
N 13°32'24" E	175.72	L198N	502.00
N 13°32'24" E	175.72	L199N	502.00
N 13°32'24" E	175.72	L200N	502.00



234.07 Acres

285.47 Acres  
SAN ANTONIO WATER SYSTEM BOARD OF TRUSTEES  
VOLUME 18949, PAGE 495  
O.P.R.

JOSE ANTONIO DE LA GARZA  
ABSTRACT NO. 3  
COUNTY BLOCK 4006

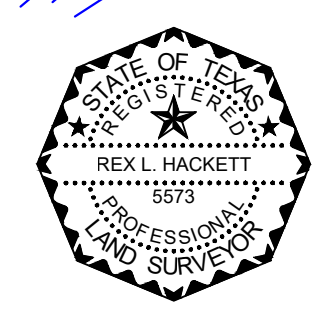
DIONICIO MARTINEZ  
SURVEY NO. 9  
ABSTRACT NO. 9

BEARING AND COORDINATES ARE BASED ON  
LAMBERT GRID, TEXAS STATE PLANE COORDINATES,  
SOUTH CENTRAL ZONE NAD 83/93. COORDINATES  
SHOWN HEREIN HAVE AN APPLIED SURFACE SCALE  
FACTOR OF 1.00017

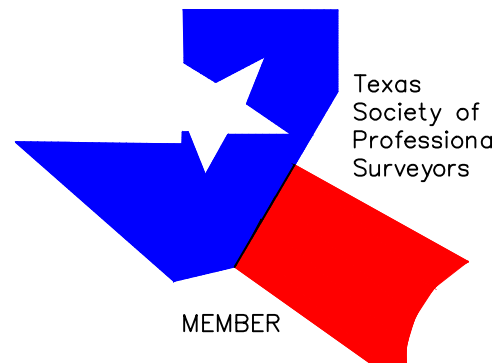
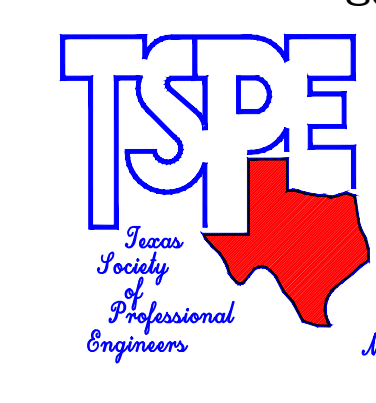
A METES AND BOUNDS DESCRIPTION OF EVEN DATE  
HEREWITH ACCOMPANIES THIS SURVEY PLAT.

A PORTION OF THE SUBJECT PROPERTY LIES  
WITHIN THE 100 YEAR FLOOD PLAIN  
AS PER FIRM MAP NO. 480205090G  
COMMUNITY PANEL NO. 480045  
DATED : SEPTEMBER 29, 2010

THIS SURVEY SUBSTANTIALLY COMPLIES WITH  
THE CURRENT TEXAS SOCIETY OF PROFESSIONAL  
SURVEYORS STANDARDS AND SPECIFICATIONS FOR  
A CATEGORY 1B, CONDITION 4 SURVEY.



200 0 100 200 400 800  
SCALE: 1" = 200'



**FORD ENGINEERING INC.**  
ENGINEERING SURVEYING PLANNING  
10927 WYE DRIVE, STE 104, SAN ANTONIO, TEXAS 78217 \* P.(210) 590-4777 \* F.(210) 590-4940  
TBPE No. 11623 \* WWW.FORDEENGINEERING.COM \* TBPLS No. 10018400

PLAT SHOWING  
234.07 ACRES  
SITUATED IN THE JOSE ANTONIO DE LA GARZA  
SURVEY ABSTRACT NO. 3, COUNTY BLOCK 4006  
BEING A PORTION OF THAT CERTAIN 834.145 ACRES  
TRACT OF LAND CONVEYED TO SA MIERS, LTD IN  
VOLUME 15749, PAGE 931 OF THE OFFICIAL  
PUBLIC RECORDS OF REAL PROPERTY OF  
BEXAR COUNTY, TEXAS