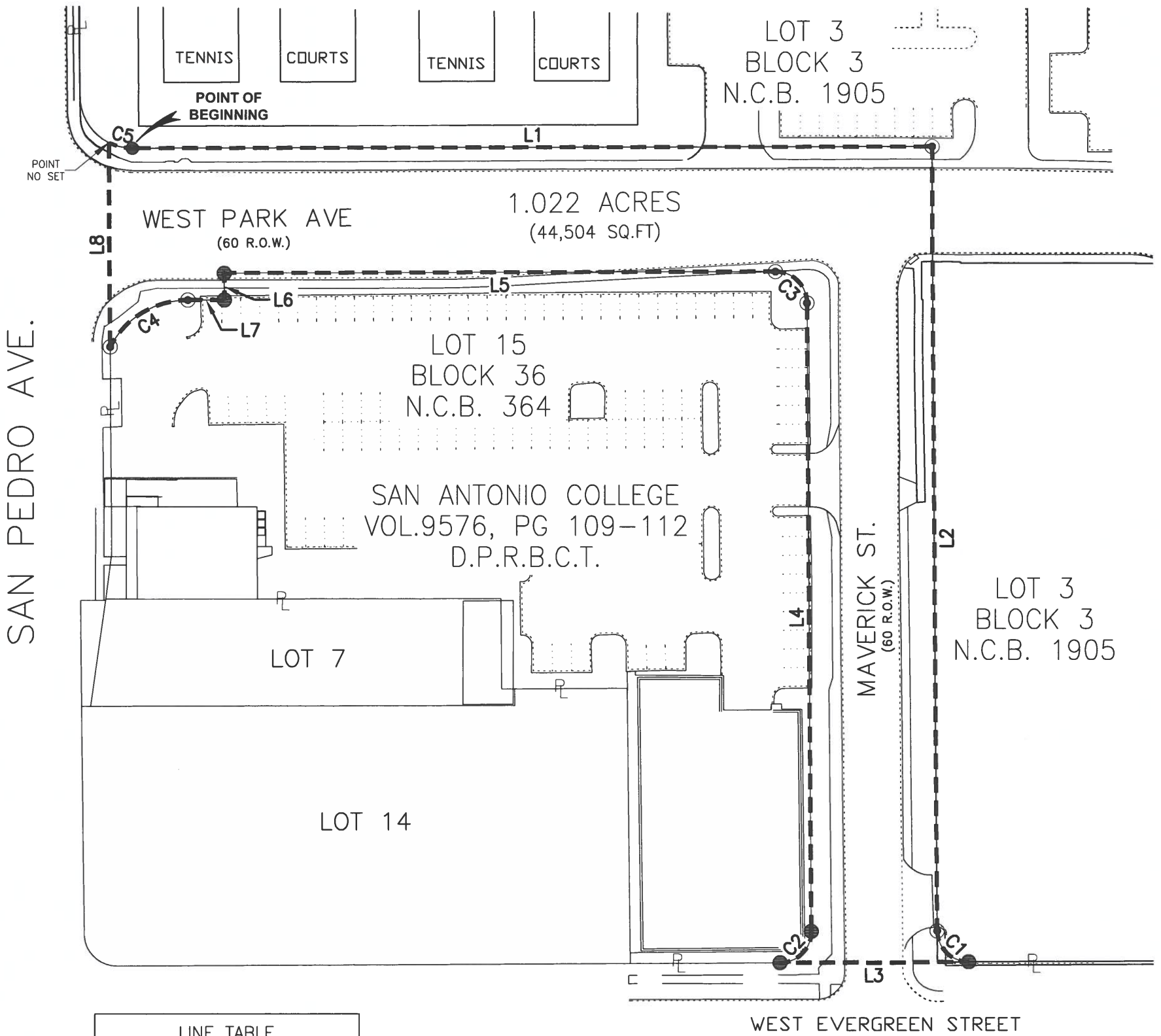
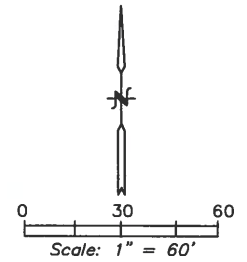


LEGEND

- PROPOSED EASEMENT
- PROPERTY LINE
- SET 1/2 IRON ROD WITH ORANGE PLASTIC CAP STAMPED "B.M.B. INC. PROPERTY CORNER"
- SET MAG NAIL
- ✕ CHISELED X ON CONCRETE
- FOUND 1/2 IRON ROD WITH RED PLASTIC CAP STAMPED "B.M.B. INC. CONTROL POINT"

BEARING SOURCE:
NAD 83/93 TEXAS SOUTH CENTRAL ZONE
ALL DISTANCES ARE GRID.



LINE TABLE		
LINE NO.	BEARING	DISTANCE
L1	N89°47'25"E	381.37'
L2	S00°20'04"E	376.03'
L3	S89°47'25"W	90.00'
L4	N00°20'04"W	301.00'
L5	S89°47'25"W	262.84'
L6	S00°20'04"E	12.80'
L7	S89°47'25"W	17.46'
L8	N00°20'40"W	97.86'

CURVE TABLE						
CURVE NO.	ARC LENGTH	RADIUS	TANGENT	DELTA	CHORD BEARING	CHORD LENGTH
C1	23.53'	15.00'	14.97	89°52'31"	S45°16'20"E	21.19'
C2	23.60'	15.00'	15.03	90°07'29"	N44°43'41"E	21.24'
C3	23.53'	15.00'	14.97	89°52'31"	N45°16'20"W	21.19'
C4	45.63'	42.00'	25.36	62°14'52"	S58°39'59"W	43.42'
C5	11.54'	25.00'	5.88	26°27'27"	S76°58'52"E	11.44'

PLAT SHOWING:

BEING A 1.022 OF AN ACRE (44,504 SQ. FT.), TRACT OF LAND, BEING OUT OF THAT PORTION OF WEST PARK AVE. AND MAVERICK STREET AS SHOWN ON THE REPLAT AND SUBDIVISION PLAT ESTABLISHING SAN ANTONIO COLLEGE REPLAT RECORDED IN VOLUME 9576, PAGES 109-112 OF THE DEED AND PLAT RECORDS OF BEXAR COUNTY, TEXAS AND BEING SITUATED EAST OF SAN PEDRO AVE. THE STREET RIGHT OF WAYS DESCRIBED HEREIN ARE BOUNDED ON THE NORTH AND EAST BY LOT 15, BLK. 3, N.C.B. 1905 AND ON THE SOUTH AND WEST BY LOT 15, BLK. 36, N.C.B. 364 OF THE FORE MENTIONED SAN ANTONIO COLLEGE REPLAT AND BEING A PART OF COUNTY BLOCK 5013, BEXAR COUNTY, TEXAS.



STATE OF TEXAS
BEXAR COUNTY
THIS SURVEY PLAT WAS PREPARED FROM AN ACTUAL SURVEY MADE ON THE GROUND UNDER MY SUPERVISION
THIS 15TH DAY OF JUNE 2018 A.D.
PAUL A. WILKINSON, RPLS 4103