



CITY OF SAN ANTONIO
PURCHASING AND GENERAL SERVICES DEPARTMENT

FORMAL INVITATION FOR BID ("IFB") NO.: 6100010298

PURCHASE OF LIGHT & MEDIUM DUTY TRUCKS

Date Issued: MAY 3, 2018

BIDS MUST BE RECEIVED NO LATER THAN:
2:00 PM CENTRAL TIME, MAY 23, 2018

Bids may be submitted by any of the following means:
Electronic submission through the Portal
Hard copy in person or by mail

Address for hard copy responses:

Physical Address:
City Clerk's Office
100 Military Plaza
2nd Floor, City Hall
San Antonio, Texas 78205

Mailing Address:
City Clerk's Office
P.O. Box 839966
San Antonio, Texas 78283-3966

For Hard Copy Submissions, Mark Envelope

"PURCHASE OF LIGHT & MEDIUM DUTY TRUCKS"

Bid Due Date: 2:00 p.m., Central Time, MAY 23, 2018

Bid No.: 6100010298

Bidder's Name and Address

Bid Bond: None Performance Bond: None Payment Bond: None Other: None

See Supplemental Terms & Conditions for information on these requirements.

Affirmative Procurement Initiative: None DBE / ACDBE Requirements: None

See Instructions for Bidders and Attachments sections for more information on these requirements.

Pre-Submittal Conference * YES

* If YES, the Pre-Submittal conference will be held on MAY 9, 2018 at 10:00 AM at FLEET TRAINING ROOM. 329 S. FRIO, SAN ANTONIO, TX 78207

Staff Contact Person: LD MCGARITY, PROCUREMENT SPECIALIST II, P.O. Box 839966, San Antonio, TX 78283-3966.

Email: ld.mcgarity@sanantonio.gov

Phone Number: 210-207-2078
Fax Number: 210-207-4360

002 - TABLE OF CONTENTS

002 - TABLE OF CONTENTS 2

003 - INSTRUCTIONS FOR BIDDERS 3

004 - SPECIFICATIONS / SCOPE OF SERVICES 10

005 - SUPPLEMENTAL TERMS & CONDITIONS 21

006 - GENERAL TERMS & CONDITIONS 24

007 - SIGNATURE PAGE 29

008 - STANDARD DEFINITIONS 30

009 - ATTACHMENTS 32

003 - INSTRUCTIONS FOR BIDDERS

Submission of Bids.

Submission of Hard Copy Bids. Submit one original bid, signed in ink, and two copies of the bid enclosed in a sealed envelope addressed to the City Clerk at the address and by the due date provided on the Cover Page. The name and address of Bidder, the date and hour of the bid opening, bid number and title of the bid solicitation shall be marked on the outside of the envelope(s). All times stated herein are Central Time. Any bid or modification received after the time and date stated on the Cover Page shall be rejected.

Submission of Electronic Bids. Submit one bid electronically by the due date provided on the Cover Page. All times stated herein are Central Time. Any bid or modification received after the time and date stated on the Cover Page shall be rejected. All forms in this solicitation which require a signature must have a signature affixed thereto, either by manually signing the document, prior to scanning it and uploading it with your submission, or affixing it electronically.

Bids sent to City by facsimile or email shall be rejected.

Modified Bids. Bids may be modified provided such modifications are received prior to the time and date set for submission of bids, and submitted in the same manner as original bids. For hard copy bids, provide a cover letter with the bid, indicating it is a modified bid and that the Original bid is being withdrawn. For electronic bids, a modified bid will automatically replace a prior bid submission. See below for information on submitting Alternate Bids.

City shall not be responsible for lost or misdirected bids or modifications.

Bidders must sign the Signature Page on hard copy bids and return the IFB document to City. For electronic bids, Bidder's electronic submission, with accompanying affirmations, constitutes a binding signature for all purposes.

Bidders are cautioned that they are responsible for the security of their log on ID and password, since unauthorized use could result in Bidder's being held liable for the submission.

Certified Vendor Registration Form. If Bidder has not completed City's Certified Vendor Registration (CVR) Form, Bidder is required to do so prior to the due date for submission of bids. The CVR form may be accessed at: <http://www.sanantonio.gov/purchasing/>. Bidders must identify the correct name of the entity that will be providing the goods and/or services under the contract. No nicknames, abbreviations (unless part of the legal title), shortened or short-hand names will be accepted in place of the full, true and correct legal name of the entity.

Alternate Bids. Alternate bids may be allowed at the sole discretion of City.

Hard Copy Alternate Bids. Alternate bids must be submitted in separate sealed envelopes in the same manner as submission of other bids. Alternate bids must be marked consecutively on the envelope as Alternate Bid No. 1, 2, etc. Failure to submit alternate bids in separate envelopes may result in rejection of a bid.

Electronic Alternate Bids Submitted Through the Portal. All alternate bids are recorded with original bids when submitted electronically.

Catalog Pricing. (This section applies to bids using catalog pricing.)

The bid will be based on manufacturer's latest dated price list(s). Said price list(s) must denote the manufacturer, latest effective date and price schedule.

Bidders shall be responsible for providing one copy of the manufacturer's catalog for each manufacturer for which a bid is submitted. Bidder shall provide said catalog at the time of submission of its bid. Manufacturers' catalogs may be submitted in any of the following formats: paper copy or CD ROM for bids submitted on paper, or PDF file for bids submitted electronically.

Bidders may submit price lists other than the manufacturer's price list. Said price list(s) must denote the company name, effective date and price schedule. These price lists are subject to approval of City Purchasing & General Services Department.

Specified items identified herein, if any, are for overall bid evaluation and represent the commonly and most used items. Net prices entered for those specified items must reflect the actual price derived from quoted price list less all discounts offered.

Restrictions on Communication.

Bidders are prohibited from communicating with: 1) elected City officials and their staff regarding the IFB or bids from the time the IFB has been released until the contract is posted as a City Council agenda item; and 2) City employees from the time the IFB has been released until the contract is awarded. These restrictions extend to "thank you" letters, phone calls, emails and any contact that results in the direct or indirect discussion of the IFB and/or bid submitted by Bidder. Violation of this provision by Bidder and/or its agent may lead to disqualification of Bidder's bid from consideration.

Exceptions to the restrictions on communication with City employees include:

Bidders may ask verbal questions concerning this IFB at the Pre-Submittal Conference.

Bidders may submit written questions, or objections to specifications, concerning this IFB to the Staff Contact Person listed on the Cover Page on or before 7 calendar days prior to the date bids are due. Questions received after the stated deadline will not be answered. Questions submitted and City's responses will be posted with this solicitation. All questions shall be sent by e-mail or through the portal.

Bidders may provide responses to questions asked of them by the Staff Contact Person after bids are received and opened. The Staff Contact Person may request clarification to assist in evaluating Bidder's response. The information provided is not intended to change the bid response in any fashion. Such additional information must be provided within two business days from City's request.

Bidders and/or their agents are encouraged to contact the Small Business Office of the International and Economic Development Department for assistance or clarification with issues specifically related to the City's Small Business Economic Development Advocacy (SBEDA) Program policy and/or completion of the SBEDA form(s), if any. The point of contact is identified on the Cover Page. Contacting the Small Business Office regarding this IFB after the bid due date is not permitted. If this solicitation contains Affirmative Procurement Initiatives, it will be noted on the Cover Page.

If this solicitation contains DBE/ACDBE requirements, bidders and/or their agents may contact the Aviation Department's DBE/ACDBE Liaison Officer for assistance or clarification with issues specifically related to the DBE/ACDBE policy and/or completion of the required form(s). Point of contact is Ms. Lisa Brice, who may be reached via telephone at (210) 207-3505 or through e-mail at lisa.brice@sanantonio.gov. Bidders and/or their agents may contact Ms. Brice at any time prior to the due date for submission of bids. Contacting her or her office regarding this IFB after the bid due date is not permitted. If this solicitation contains DBE/ACDBE requirements, it will be noted on the Cover Page.

Pre-Submittal Conference.

If a Pre-Submittal Conference is scheduled, it will be held at the time and place noted on the Cover Page. Bidders are encouraged to prepare and submit their questions in writing in advance of the Pre-Submittal Conference in order to expedite the proceedings. City's responses to questions received prior to the conference may be distributed at the Pre-Submittal Conference and posted with this solicitation. Attendance at the Pre-Submittal Conference is optional, but highly encouraged.

This meeting place is accessible to disabled persons. Call the Staff Contact Person for information on the location of the wheelchair accessible entrance, or to request an interpreter for the deaf. Interpreters for the deaf must be requested at least 48 hours prior to the meeting. For other assistance, call (210) 207-7245 Voice/TTY.

Any oral response given at the Pre-Submittal Conference that is not confirmed in writing and posted with this solicitation shall not be official or binding on the City.

Changes to IFB.

Changes to this IFB made prior to bid opening shall be made directly to the original IFB. Changes are captured by creating a replacement version each time the IFB is changed. It is Bidder's responsibility to check for new versions

until the bid due date. City will assume that all bids received are based on the final version of the IFB as it exists on the day bids are due.

No oral statement of any person shall modify or otherwise change or affect the terms, conditions or specifications stated in the IFB.

Preparation of Bids.

All information required by the IFB must be furnished or the bid may be deemed non-responsive and rejected. Any ambiguity in the bid as a result of omission, error, unintelligible or illegible wording shall be construed in the favor of City.

Correct Legal Name. If Bidder is found to have incorrectly or incompletely stated the name of the entity that will provide goods and/or services, the bid may be rejected.

Line Item Bids. Any bid that is considered for award by each unit or line item, must include a price for each unit or line item for which Bidder wishes to be considered. All bids are awarded on the basis of low line item, low total line items, or in any other combination that serves the best interest of City, unless City designates this solicitation as an "all or none" bid in the Supplemental Terms & Conditions.

All or None Bids. Any bid that is considered for award on an "all or none" basis must include a price for all units or line items. In an "All or None" bid, a unit price left blank shall result in the bid being deemed nonresponsive and disqualified from consideration. An "All or None" bid is one in which City will award the entire contract to one bidder only.

Delivery Dates. Proposed delivery dates must be shown in the bid form where required and shall include weekends and holidays, unless specified otherwise in this IFB. Proposed delivery times must be specific. Phrases such as "as required", "as soon as possible" or "prompt" may result in disqualification of the bid. Special delivery instructions, if any, may be found in the Specifications / Scope of Services section of this document, or in the Purchase Order.

Tax Exemption. The City of San Antonio is exempt from payment of federal taxes, and State of Texas limited sales excise and use taxes. Bidders must not include such taxes in bid prices. An exemption certificate will be signed by City where applicable upon request by Bidder after contract award.

Description of Supplies.

Any brand names, catalog or manufacturer's reference used in describing an item is merely descriptive, and not restrictive, unless otherwise noted, and is used only to indicate quality and capability desired.

Bids submitted for comparable items must clearly identify the proposed product, model, and type, as applicable, and shall include manufacturer specification sheet(s) for each proposed item with bid response. Product specifications shall be the most current available and be sufficiently detailed and descriptive so as to permit City to determine the item's suitability and compliance with bid specifications. City shall be the sole judge of equality and suitability of comparable items.

Pro-rata adjustments to packaging and pricing may be allowed at the sole discretion of City.

Samples, Demonstrations and Pre-award Testing. If requested by City, Bidder shall provide product samples, demonstrations, and/or testing of items bid to ensure compliance with specifications prior to award of the contract. Samples, demonstrations and/or testing must be provided within 7 calendar days of City's request. Failure to comply with City's request may result in rejection of a bid. All samples (including return thereof), demonstrations, and/or testing shall be at Bidder's expense. Samples will be returned upon written request. Requests for return of samples must be made in writing at the time the samples are provided. Otherwise, samples will become property of City at no cost to City. Samples that are consumed or destroyed during demonstrations or testing will not be returned.

Estimated Quantities for Annual Contracts.

Designation as an "annual" contract is found in the contract's title on the Cover Page of this document. The quantities stated are estimates only and are in no way binding upon City. Estimated quantities are used for the purpose of evaluation. City may increase or decrease quantities as needed. Where a contract is awarded on a unit price basis, payment shall be based on the actual quantities supplied.

Bidders shall thoroughly examine the drawings, specifications, schedule(s), instructions and all other contract documents.

Bidders shall make all investigations necessary to thoroughly inform themselves regarding plant and facilities for delivery of material and equipment, or conditions and sites/locations for providing goods and services as required by this IFB. No plea of ignorance by Bidder will be accepted as a basis for varying the requirements of City or the compensation to Bidder.

Confidential or Proprietary Information. All bids become the property of the City upon receipt and will not be returned. Any information deemed to be confidential by Bidder should be clearly noted; however, City cannot guarantee that it will not be compelled to disclose all or part of any public record under the Texas Public Information Act, since information deemed to be confidential by Bidder may not be considered confidential under Texas law, or pursuant to a Court order. Note that pursuant to state law, bids are opened publicly and read aloud. In addition, bids are tabulated and posted to the City's website, so shall not be considered proprietary or confidential.

Interlocal Participation.

City may engage in cooperative purchasing with other governmental entities or governmental cooperatives ("Entity" or "Entities") to enhance City's purchasing power. At City's sole discretion and option, City may inform other Entities that they may acquire items listed in this IFB. If this contract will be subject to cooperative purchasing, such fact will be indicated in the Supplemental Terms and Conditions portion of this IFB. Such acquisition(s) shall be at the prices stated in the bid, and shall be subject to Bidder's acceptance. Entities desiring to acquire items listed in this IFB shall be listed on a rider attached hereto, if known at the time of issuance of the IFB. City may issue subsequent riders after contract award setting forth additional Entities desiring to utilize this bid.

Bidder must sign and submit the rider, if attached to this IFB, with its bid, indicating whether Bidder wishes to allow other Entities to use its bid. Bidder shall sign and return any subsequently issued riders within ten calendar days of receipt. Bidder's decision on whether to allow other Entities to use the bid shall not be a factor in awarding this IFB.

Costs of Bidding. Bidder shall bear any and all costs that are associated with the preparation of the Bid, attendance at the Pre-Submittal Conference, if any, or during any phase of the selection process.

Rejection of Bids.

City may reject any and all bids, in whole or in part, cancel the IFB and reissue the solicitation. City may reject a bid if:

Bidder misstates or conceals any material fact in the bid; or

The bid does not strictly conform to law or the requirements of the solicitation;

The bid is conditional; or

Any other reason that would lead City to believe that the bid is non-responsive or Bidder is not responsible.

City, in its sole discretion, may also waive any minor informalities or irregularities in any bid, such as failure to submit sufficient bid copies, failure to submit literature or similar attachments, or business affiliation information.

Variances and Exceptions to Bid Terms. In order to comply with State law, bidders must submit bids on the same material terms and conditions. Bids that contain material variances or exceptions to the terms and conditions, including additional terms and conditions, will be rejected.

Changes to Bid Form. Bids must be submitted on the forms furnished. Bids that change the format or content of City's IFB will be rejected.

Withdrawal of Bids. Bids may be withdrawn prior to the time set for the bid opening. Written notice of withdrawal shall be provided to the City Clerk for bids submitted in hard copy. Bids submitted electronically may be withdrawn electronically.

Bid Opening. Bids will be opened publicly and read aloud at 2:30 on the day the bids are due. Bid openings are held at Purchasing & General Services, Riverview Tower, 11th Floor, 111 Soledad, Suite 1100, San Antonio, Texas 78205.

Evaluation and Award of Contract.

Per Section §252.043 of the Texas Local Government Code, the contract will be awarded to the lowest responsible bidder. The Purchasing Division evaluates bids for responsiveness and the responsibility of the bidder, and makes a recommendation to the City Council. The City Council makes the final determination regarding award.

City reserves the right to make an award on the basis of low line item, low total line items, or in any other combination that serves the best interest of City, unless City designates this solicitation as an "all or none" bid in the Supplemental Terms & Conditions.

A written award of acceptance (manifested by a City Ordinance) and Purchase Order furnished to Bidder results in a binding contract without further action by either party. Vendor must have the Purchase Order before making any delivery.

City reserves the right to utilize historical usage data as a basis for evaluation of bids when future usages are unable to be determined.

Breaking of tie bids shall be in accordance with the Texas Local Government Code §271.901.

City reserves the right to delete items prior to the awarding of the contract, and purchase said items by other means.

Inspection of Facilities/Equipment.

Depending on the nature of the IFB, Bidders' facilities and equipment may be a determining factor in making the bid award. All bidders may be subject to inspection of their facilities and equipment.

Prospective bidders must prove beyond any doubt to City Purchasing Administrator that they are qualified and capable of performing the contract's requirements.

Prompt Payment Discount.

Provided Bidder meets the requirements stated herein, City shall take Bidder's offered prompt payment discount into consideration. The evaluation will not be based on the discount percentage alone, but rather the net price as determined by applying the discount to the bid price, either per line item or total bid amount. However, City reserves the right to reject a discount if the percentage is too low to be of value to City, all things considered. City may also reject a discount if the percentage is so high as to create an overly large disparity between the price City would pay if it is able to take advantage of the discount and the price City would pay if it were unable to pay within the discount period. City may always reject the discount and pay within the 30 day period, at City's sole option.

City will not consider discounts that provide fewer than 10 days to pay in order to receive the discount.

For example, payment terms of 2% 5, Net 30 will NOT be considered in bid evaluations or in the payment of invoices. However, payment terms of 2% 10, Net 30 will result in a two percent reduction in the bid price during bid evaluation, and City will take the 2% discount if the invoice is paid within the 10 day time period.

Tabulations. The Purchasing Division will post preliminary tabulations within 7 days of the advertised bid opening. The information on these tabulations will be posted for informational purposes only, and will be posted as read during the bid opening. This tabulation is not a notice of award of the contract. All bids are subject to review for completeness, accuracy and compliance with the terms set forth in the bid documents.

Bid Protest Procedures.

Any bidder who is adversely affected in connection with the solicitation, evaluation, or proposed award of a contract may file a protest with the Director and appeal any adverse decision to the City Manager of the City of San Antonio.

Bidder must deliver a written notice of protest to the Director within 7 calendar days of the posting of the intent to award. If Bidder does not file a written notice within this time, Bidder will have waived all rights to formally protest the intent to award. It is Bidder's responsibility to check the City's website posting.

Debriefing. Debriefing of contract award is available upon request and after award of the Contract.

Prohibited Financial Interest. The Charter of the City of San Antonio and its Ethics Code prohibit a City officer or employee, as those terms are defined in the Ethics Code, from having a financial interest in any contract with City or any City agency such as City-owned utilities. An officer or employee has a "prohibited financial interest" in a contract with City

or in the sale to City of land materials, supplies or service, if any of the following individual(s) or entities is a party to the contract or sale: the City officer or employee; his parent, child or spouse; a business entity in which he or his parent, child or spouse owns ten (10) percent or more of the voting stock or shares of the business entity, or ten (10) percent or more of the fair market value of the business entity; or a business entity in which any individual or entity above listed is a subcontractor on a City contract, a partner or a parent or subsidiary business entity.

Conflict of Interest. Effective January 1, 2006, Chapter 176 of the Texas Local Government Code requires that persons, or their agents, who seek to contract for the sale or purchase of property, goods, or services with the City, shall file a completed conflict of interest questionnaire with the City Clerk not later than the 7th business day after the date that the person: (1) begins contract discussions or negotiations with the City; or (2) submits to the City an application, response to a request for proposals or bids, correspondence, or another writing related to a potential agreement with the City. The conflict of interest questionnaire form is available from the Texas Ethics Commission at www.ethics.state.tx.us. Completed conflict of interest questionnaires may be mailed or delivered by hand to the Office of the City Clerk. If mailing a completed conflict of interest questionnaire, mail to: Office of the City Clerk, P.O. Box 839966, San Antonio, TX 78283-3966. If delivering a completed conflict of interest questionnaire, deliver to: Office of the City Clerk, City Hall, 2nd floor, 100 Military Plaza, San Antonio, TX 78205. Bidder should consult its own legal advisor with questions regarding the statute or form. Do not include this form with your sealed bid. The Purchasing Division will not deliver the form to the City Clerk for you.

State of Texas Conflict of Interest Questionnaire (Form CIQ). Chapter 176 of the Texas Local Government Code requires that persons, or their agents, who seek to contract for the sale or purchase of property, goods, or services with the City, shall file a completed Form CIQ with the City Clerk if those persons meet the requirements under 176.006(a) of the statute.

By law this questionnaire must be filed with the City Clerk not later than the 7th business day after the date the vendor becomes aware of facts that require the statement to be filed. See Section 176.006(a-1), Texas Local Government Code.

Form CIQ is available from the Texas Ethics Commission by accessing the following web address:

https://www.ethics.state.tx.us/filinginfo/conflict_forms.htm

In addition, please complete the City's Addendum to Form CIQ (Form CIQ-A) and submit it with Form CIQ to the Office of the City Clerk. The Form CIQ-A can be found at:

<http://www.sanantonio.gov/atty/ethics/pdf/OCC-CIQ-Addendum.pdf>

When completed, the CIQ Form and the CIQ-A Form should be submitted together, either by mail or hand delivery, to the Office of the City Clerk. If mailing, mail to:

Office of the City Clerk, P.O. Box 839966, San Antonio, TX 78283-3966.

If delivering by hand, deliver to:

City Hall, 100 Military Plaza, San Antonio, TX 78205.

Do not include these forms with your sealed bid. The Purchasing Division will not deliver the forms to the City Clerk for you.

Certificate of Interested Parties (Form 1295)

The Texas Government Code §2252.908, and the rules issued by the Texas Ethics Commission found in Title 1, Sections 46.1, 46.3 and 46.5 of the Texas Administrative Code, require a business entity to submit a completed Form 1295 to the City before the City may enter into a contract with that business entity.

Form 1295 must be completed online. It is available from the Texas Ethics Commission by accessing the following web address: https://www.ethics.state.tx.us/whatsnew/elf_info_form1295.htm.

Print your completed Form 1295 and sign it in front of a notary. Submit your signed and notarized Form 1295 with your response to this solicitation. Where requested to provide the name of the public entity with whom you are contracting, insert "City of San Antonio". Where requested to provide the contract number, provide the solicitation number shown on the cover page of this solicitation (e.g. IFB 6100001234, RFO 6100001234 or RFCSP 6100001234).

The following definitions found in the statute and Texas Ethics Commission rules may be helpful in completing Form 1295.

"Business entity" includes an entity through which business is conducted with a governmental entity or state agency, regardless of whether the entity is a for-profit or nonprofit entity. The term does not include a governmental entity or state agency. (NOTE: The City of San Antonio should never be listed as the "Business entity".)

"Controlling interest" means: (1) an ownership interest or participating interest in a business entity by virtue of units, percentage, shares, stock, or otherwise that exceeds 10 percent; (2) membership on the board of directors or other governing body of a business entity of which the board or other governing body is composed of not more than 10 members; or (3) service as an officer of a business entity that has four or fewer officers, or service as one of the four officers most highly compensated by a business entity that has more than four officers. Subsection (3) of this section does not apply to an officer of a publicly held business entity or its wholly owned subsidiaries.

"Interested party" means: (1) a person who has a controlling interest in a business entity with whom a governmental entity or state agency contracts; or (2) an intermediary.

"Intermediary," for purposes of this rule, means a person who actively participates in the facilitation of the contract or negotiating the contract, including a broker, adviser, attorney, or representative of or agent for the business entity who:

- (1) receives compensation from the business entity for the person's participation;
- (2) communicates directly with the governmental entity or state agency on behalf of the business entity regarding the contract; and
- (3) is not an employee of the business entity or of an entity with a controlling interest in the business entity.

004 - SPECIFICATIONS / SCOPE OF SERVICES

- 4.1 **SCOPE:** The City of San Antonio is soliciting bids to provide ten replacement vehicles and one new vehicle to be added to the City Fleet in accordance with the Building and Equipment Services Department specifications listed herein. These vehicles will be used for parks maintenance, Dead Animal Collection, street pavement support, Nelson Gardens brush collection efforts, and mechanic off road support.

- 1 - ¾ Ton Single Cab Bi-Fuel Gasoline/Propane Truck
- 4 - ¾ Ton Single Cab Diesel Trucks with Dump Bed and Crane
- 1 - ¾ Ton Crew Cab Bi-Fuel Gasoline/CNG Truck
- 1 - >33,000 GVW General Purpose Fifth Wheel
- 4 - Class 6 Diesel 84" CC DRW 4x2 Service Body

- 4.2 **GENERAL CONDITIONS:** The following general conditions will apply to all items within this bid unless specifically excluded within any item.

- 4.2.1 Equipment shall be manufacturer's latest design, standard production model and shall have been manufactured within the last 12 months from the date of delivery to City. All components shall be installed new, unused, and shall be manufacturer's standard equipment unless otherwise specified or replaced herein. Equipment is to be inspected, serviced, and adjusted in accordance with manufacturer's recommended pre-delivery checklist, and ready for operation upon delivery. Manufacturer's Statement of Origin (MSO) showing manufacture within the last 12 calendar months, and completed pre-delivery checklists will be required at delivery. Equipment offered under the below listed specifications will be considered unacceptable if, for any reason, the equipment's, or major component's, long term availability on the U.S. market, or in the local area, is in doubt.

- 4.2.2 Equipment must include the maximum standard manufacturer's warranty on all components, with parts and service included. All components, parts and service shall include, as a minimum, a one year/2000 hours warranty or the manufacturer's standard commercial warranty, whichever is greater, shall apply to all products and/or services purchased under this IFB, unless otherwise specified in the Specifications/Scope of Services section of this IFB. All warranty times shall start the date the vehicle is placed in service as determined by the City, not on the delivery date. The dealer will be notified by letter of the in-service date of each vehicle by serial number. Bidder shall fully explain the warranty by attaching separate, authenticated correspondence or entering such information in the remarks section of this bid. Warranty, reliability, and replacement captive parts costs and availability shall be a consideration in award of this bid. Warranty parts and service must be available within 50 mile radius of San Antonio City Hall from and by a factory-authorized dealer (NO EXCEPTIONS). In the event that a unit purchased from a vendor requires transportation outside of Bexar County for a repair covered under warranty, that vendor shall be responsible for paying for all cost associated with the transportation to and from the warranty repair facility. If the vendor chooses to travel to inspect the unit to determine if the repair needed is covered under warranty, all expenses shall be paid for by the vendor. All warranty repairs must be completed within three (3) business days from the date equipment is delivered to the vendor unless otherwise approved by the appropriate City of San Antonio BESD Fleet Operations Manager or designate. Bidders must certify that all repairs needed after the warranty period will be available within 50 mile radius of San Antonio City Hall.

- 4.2.3 **DELIVERY** - All deliveries are to be made inside the City limits of San Antonio. Vendor must deliver equipment to the following address:

City of San Antonio,
Northeast Service Center,
10303 Tool Yard, Bldg. #2,
San Antonio, TX 78233
Attn: Acquisitions

Delivery to a non-specified location will result in non-acceptance of the equipment by the City. All deliveries must be pre-arranged with a minimum 24-hour notification, NO EXCEPTIONS. Vehicles will be accepted 8:00 A.M. to 3:00 P.M. CST. Vehicles with more than 500 miles accumulated on the odometer will not be accepted. Vehicles with GVWR Minimum 52,000 lbs. with more than 1500 miles accumulated on the odometer will not be accepted. All vehicles are required to have a full tank(s) when delivered to City specified location.

- 4.2.4 **Literature and Equipment Manuals** – The supplier shall furnish (2) complete sets of the following: Parts Manual, Maintenance Manual, Service Manual, and Operators Manual, or (2) CD ROM per model of all equipment,

accessories, and components, or (2) USB drives, or accessible on-line through manufacturer's website. The supplier shall furnish (2) complete sets of detailed literature and specifications of each vehicle type upon contract award. On-line access of Parts Manual, Maintenance Manual, and Service Manual, and Operators Manual is also acceptable. All bids will include complete manufacturer's specifications for the model being offered.

- 4.2.5 The Manufacturer's Statement of Origin (MSO), Dealer Temporary license plates/tags, proper Invoice, Texas state inspection certificate, signed 130U form are required upon delivery of vehicle. Any of these missing items could deem the vehicle delivered *Not as Specified* and will not be processed or accepted vehicle all required paperwork is completed and provided to Fleet Acquisition.
- 4.2.6 All bodies and components in this bid will be installed in accordance with the appropriate complete Vehicle Data Manual. Certification of compliance will be posted on the left door post of the vehicle. Except for manufacturer's data plates (maximum 4" x 6"), vendor or manufacturer's identifying markings (decals and plates) will not be applied to the vehicle or mounted components. Installation will be completed in compliance with Federal Motor Vehicle Department of Transportation Standards and Texas State Highway requirements. Installation of body and accessories on City furnished vehicles will be accomplished by drilling holes in the frame. Welding on or cutting of frame is not authorized forward of the rear spring hanger or support. Bidders will be responsible for the relocation of any truck components to facilitate installation of the body and equipment. Such relocation must be included as part of the basic bid. No dealership nameplates, markings or decals will be permitted on the vehicles.
- 4.2.7 All units shall be equipped with safety equipment as required by the Federal Government. All units shall MEET ALL SAFETY STANDARDS AND REQUIREMENTS.
- 4.2.8 Unit shall be provided with limited slip axles.
- 4.2.9 CONVENIENCE FEATURES: Unit is to be equipped at the factory with air conditioning/heater/defroster, (Maximum capacity cooling system offered by manufacturer), full headliner minimum OEM AM/FM radio, power steering, power ABS brakes, power windows, power door locks, and manual tilt steering wheel. All units to be equipped with steering column mounted gear selector unless otherwise specified. Unit shall have a minimum two keyless remotes (fobs) and shall have a minimum of three (3) sets of keys unless vehicle utilizes keyless entry. If the vehicle utilizes keyless remotes (fobs) only three (3) are required.
- 4.2.10 Any diesel engine being bid must conform to latest NOx EPA and GHG emission standard in effect at the time of offer. Vendor must supply a copy of the latest Emissions Certificate of Conformity for the vehicles bid. Only engines using selective catalytic reduction (SCR) technology will be accepted.
- 4.2.11 All lighting shall be LED where available.
- 4.2.12 All vehicles provided shall be equipped with OEM tinted glass.
- 4.2.13 Vehicles provided shall have a minimum of a driver's seat and one passenger seat, unless otherwise specified.
- 4.2.14 Exterior and Interior Color: Unless otherwise specified, each vehicle shall have a white exterior body color. Unless otherwise specified, interior coloring shall be grey.

4.3	ITEM	QUANTITY	DESCRIPTION
	1	1	Propane Powered ¾ Ton Regular Cab Pickup Truck Long Bed

- 4.3.1 ENGINE: Minimum 8 cylinders with a minimum 300 H.P.
- 4.3.2 GVWR: 6001 - 10,000 lbs.
- 4.3.3 TRANSMISSION/ DRIVE: Automatic with overdrive; 6 speed minimum; Power Steering; 4x2.
- 4.3.4 SUSPENSION: Heaviest Duty available to include heavy duty shock absorbers and independent struts with stabilization.
- 4.3.5 BRAKES: Equipped with 4-wheel brake system, and front vented discs minimum.

- 4.3.6 **DIMENSIONS:** Regular cab configuration with a minimum 95 inches cargo box.
- 4.3.7 **WHEELBASE:** Wheelbase to be a minimum 130" inches
- 4.3.8 **WHEELS & TIRES:** Tires to meet or exceed minimum gross vehicle weight rating of vehicle, all terrain tire design.
- 4.3.9 **FUEL SYSTEM:** Trucks shall be equipped with a Westport WiNG Power System or proven equal bi-fuel propane autogas system; with a minimum 19 gallon useable under bed tank package.
- 4.3.10 **MIRRORS:** OEM standard type inside. Power mirrors outside, left and right, collapsible, below eye level type. Recreational swing or telescoping type. Largest size available in model offered. Remote controlled from driver seat.
- 4.3.11 **SEATING:** Vinyl seating and upholstery. 40/20/40 bench seating with center console.
- 4.3.12 **FLOOR:** Vinyl flooring.
- 4.3.13 **WARRANTY:** The OEM warranty will remain intact unless it is determined that the failure of an OEM part is attributed to an aftermarket fuel conversion. The company completing the after-market fuel conversion shall be responsible for fuel control issues/problems. The conversion installation shall be warranted a minimum of 3 years or 36 thousand miles from date of installation.
- 4.3.14 **ACCEPTABLE MODEL: PROPANE POWERED FORD F-250 OR OTHER BRAND WHOSE WARRANTY SHALL BE UPHeld WITH AFTERMARKET FUEL SYSTEM.** Must show proof of upfit installer is approved by manufacturer with bid submission. Upfit installation shall not be void with aftermarket fuel system.
- 4.3.15 Vehicles being replaced is 2336.
- 4.3.16 **TOOLBOXES:** Unit shall be equipped with three (3 qty) toolboxes. Both shall be bed mounted and weather resistant white/black/polished toolbox, aluminum preferred. Toolboxes must have toolbox shocks that do not interfere with closing of the lid. Toolbox must be lockable with a key.
- 4.3.16.1 **TOOLBOX 1:** The toolbox must be the entire width of the bed and plush mounted against the cab to allow easy access. The measurements shall be minimum 68"L 20"W x 18"H.
- 4.3.16.2 **TOOLBOX 2:** The toolbox shall be securely mounted on the driver side of the unit. The length of the unit shall be a minimum of 60" inches in length. The unit shall be a minimum 12" in width. The depth of the toolbox shall be the deepest available.
- 4.3.16.3 **TOOLBOX 3:** The toolbox shall be securely mounted on the passenger side of the unit. The length of the unit shall be a minimum of 60" inches in length. The unit shall be a minimum 12" in width. The depth of the toolbox shall be the deepest available.
- 4.3.17 **Side Step:** Truck shall have a driver and passenger side step.
- 4.3.18 **TOW PACKAGE:** OEM rear bumper and tow package to include receiver hitch with 2" hitch opening, OEM in-cab mounted trailer brake controller and both a 4-Way flat vehicle connector and 7-Way round vehicle connector (Flat Pin).



4.4	ITEM	QUANTITY	DESCRIPTION
	2	4	¾ Ton Diesel Pickup Dump Bed Insert w/Crane

- 4.4.1 ENGINE: Minimum 6 cylinders with a minimum 340 H.P.
- 4.4.2 GVWR: 6001 - 10,000 lbs.
- 4.4.3 TRANSMISSION/ DRIVE: Automatic with overdrive; 6 speed minimum; Power Steering; 4x2.
- 4.4.4 SUSPENSION: Heaviest Duty available to include heavy duty shock absorbers and independent struts with stabilization.
- 4.4.5 BRAKES: Equipped with 4-wheel brake system, and front vented discs minimum.
- 4.4.6 DIMENSIONS: Regular cab configuration with a minimum 95 inches cargo box.
- 4.4.7 WHEELBASE: Wheelbase to be a minimum 130" inches.
- 4.4.8 WHEELS & TIRES: Tires to meet or exceed minimum gross vehicle weight rating of vehicle, all terrain tire design.
- 4.4.9 FUEL SYSTEM: Trucks shall be equipped with a minimum 28 gallon diesel tank.
- 4.4.10 MIRRORS: OEM standard type inside. Power mirrors outside, left and right, collapsible, below eye level type. Recreational swing or telescoping type. Largest size available in model offered. Remote controlled from driver seat.
- 4.4.11 SEATING: Vinyl seating and upholstery. 40/20/40 bench seating with center console.
- 4.4.12 FLOOR: Vinyl flooring.
- 4.4.13 DUMP INSERT & COVER: Length and width of insert must fit an 8ft. cargo bed. The insert must be a bolt-on design; TruckCraft or approved brand equal.
 - 4.4.13.1 Lifting Capacity- Dump insert shall have a minimum weight capacity of 5,000 lbs. and a minimum volume dump capacity of 2 cubic yards.
 - 4.4.13.2 Material – Insert shall be constructed of a minimum 12-gauge steel sides and floor with black powder coat interior finish. Dump body must be constructed in a manner that prevents liquid from leaking. Pivots to be serviceable via threaded grease fittings.
 - 4.4.13.3 Hydraulics – Hydraulic system must be a single mounted hoist and pump located under the unit and operates on the truck battery. Dump must include a remote control for dump operation that must lift up to a minimum 45-degree angle and include a removable double-acting tailgate.

4.4.13.4 Cover – Unit must contain a cover ("camper style") of all metal construction that is either bolted or welded to the dump insert and is constructed of aluminum. Cover must contain a rear topper door (non-glass) that is hinged from the top and has a latch to allow it to be secured in the closed position. Rear topper door must be able to be left in the open position with gas struts mounted on each side of door. Rear tailgate must open and close without having to open the topper door.

4.4.13.5 Dimensions – Height must be no less or greater than the height of the cab of the truck. Length must be no less or greater than the length of the dump insert. Width must be no less or greater than the width of the dump insert.

4.4.13.6 Exterior of dump insert and cover must be painted to match color of truck (OEM white).

4.4.13.7 Cover must contain two rear brake lights; one mounted on each side of the cover at the highest point possible and wired to the light system of the truck. Cover shall have two amber flashing LED strobe lights; one mounted on each side of the cover facing rearward and wired to an up-fitter switch to be installed on the cab of the vehicle.

4.4.14 FOLD-AWAY BUMPER CRANE Trucks shall be upfitted with a bumper fold away crane model that is Western Mule A-1350 or approved equal.

4.4.14.1 Type - Bumper mounted fold-away type crane with minimum 1350 lbs. lifting capacity. Hoist motor shall be 12 volt D.C. powered with a power up and down feature controlled by a hand held controller and circuit breaker protected. Cable shall be a minimum 25' feet in length and minimum 3/16" in thickness. Crane shall have a 360 degree rotation. Crane shall be constructed of steel. Bumper shall have a Class 3 receiver type hitch rated a minimum 1000 lbs. vertical hitch load. The crane shall be OSHA & ANSI compliant. The crane/bumper shall be finished with a semi-gloss black powder coating. Crane shall be furnished with detailed operation and safety instructions and a parts list and maintenance instructions along with a one year warranty on materials and workmanship.

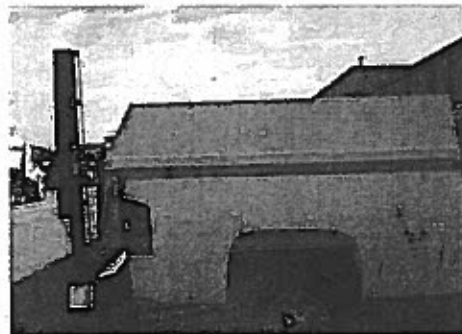
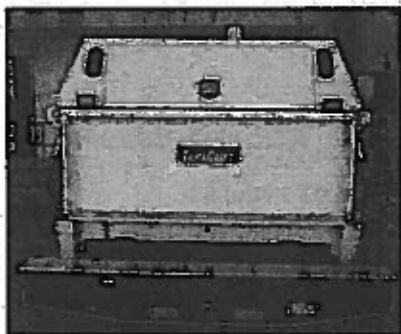
4.4.14.2 Boom Dimensions - Crane shall be mounted to a standard full-size pickup. Crane boom shall be a maximum height of 77" inches and 45" inches in length.

4.4.14.3 Additional Features - Unit shall have a "Free-Wheeling" winch drum. Unit shall have a two-piece aluminum diamond plate cover with a continuous stainless steel hinge attached with stainless steel rivets and magnetic latch to secure the cover when closed. Unit shall have a three piece factory installed aluminum cover for the bottom side of the bumper. Unit shall contain LED tail lights that shall be sealed beam combination stop/turn lights, flush mounted in a heavy duty rubber shock mount and pre-wired into the bumper. Unit shall have LED sealed beam backup lights, flush mounted in a heavy duty rubber shock mount. The bulb shall be rated at a minimum of 32 candlepower and pre-wired into the bumper.

4.4.15 WARRANTY: The conversion installation shall be warranted a minimum of 3 years or 36 thousand miles from date vehicle is placed into service.

4.4.16 Must show proof of upfit installation proposed models of equipment and applicable warranty locations.

4.4.17 Vehicles being replaced are #4166, #4054, #4402 and #419813. Left photo is rear of truck. Right photo depicts un-stowed crane.



- | 4.5 | ITEM | QUANTITY | DESCRIPTION |
|--------|---|----------|--|
| | 3 | 1 | ¾ Ton Crew Cab Bi-Fuel Gasoline and CNG Truck |
| 4.5.1 | ENGINE: Minimum 8 cylinders with a minimum 300 H.P. | | |
| 4.5.2 | GVWR: 6001 - 10,000 lbs. | | |
| 4.5.3 | TRANSMISSION/ DRIVE: Automatic with overdrive; 6 speed minimum; Power Steering; 4x2. | | |
| 4.5.4 | SUSPENSION: Heaviest Duty available to include heavy duty shock absorbers and independent struts with stabilization. | | |
| 4.5.5 | BRAKES: Equipped with 4-wheel brake system, and front vented discs minimum. | | |
| 4.5.6 | DIMENSIONS: Full Four Door cab configuration with a minimum 95 inches cargo box. | | |
| 4.5.7 | WHEELBASE: Wheelbase to be a minimum 140" inches | | |
| 4.5.8 | WHEELS & TIRES: Tires to meet or exceed minimum gross vehicle weight rating of vehicle, all season tire design. | | |
| 4.5.9 | FUEL SYSTEM: Trucks shall be equipped with Minimum 38 gallon tank capacity and to be OEM factory installed bi-fuel gasoline and compressed natural gas capacity. | | |
| 4.5.10 | MIRRORS: OEM standard type inside. Power mirrors outside, left and right, collapsible, below eye level type. Recreational swing or telescoping type. Largest size available in model offered. Remote controlled from driver seat. | | |
| 4.5.11 | SEATING: Vinyl seating and upholstery. 40/20/40 bench seating with center console. | | |
| 4.5.12 | FLOOR: Vinyl flooring. | | |
| 4.5.13 | ACCEPTABLE MODEL: RAM 2500 Bi-Fuel or Chevrolet Silverado Bi-Fuel 2500 shall be accepted. The City would like the same manufacturer to provide fuel system installation and warranty everything at one location. | | |
| 4.5.15 | Vehicle being replaced is #0410, which is currently not a CNG equipped fuel system. | | |

Photo Not Available.

- | 4.6 | ITEM | QUANTITY | DESCRIPTION |
|-------|---|----------|---|
| | 4 | 1 | 52K OR > GVW CONVENTIONAL TRACTOR TRUCK |
| 4.6.1 | ENGINE: Diesel, minimum 12 Liter, 470 net horsepower rated at manufacturers recommended RPM, producing a minimum of 1650 ft. lb. of gross torque and should be at +/- 70% of engine ground RPM. Engine will have automatic shutdown feature enabled after 5-minutes of idle time. | | |
| 4.6.2 | GVWR: Minimum 52,000 lbs. | | |
| 4.6.3 | TRANSMISSION/ DRIVE: Manual transmission; Eaton Fuller or proven equal. 10 Speed Transmission must be capable of minimum 1,000 ft. lb. of gross torque output at/ between 1100 and 1300 RPM. | | |
| 4.6.4 | FRONT AXLE: Minimum 12,000 lbs. capacity with 12,000 lbs. spring with Stemco or proven equal front wheel bearing oiler or maintenance free axle approved. To include heavy duty front shocks | | |

- 4.6.5 **REAR AXLE:** Tandem axle configuration- 6x4 design. Single speed tandem drive, minimum 40,000 lbs. capacity. Gear ratio installed must be capable of 70 +/- 2 mph geared road speed at full engine governed RPM. Driver controlled differential locks on both rear axles.
- 4.6.6 **SUSPENSION:** Equipped with manufacturer's heavy duty spring suspension applicable to axle ratings and overall gross vehicle weight
- 4.6.7 **TIRES & WHEELS:** Wheels to be 10 hole hub piloted steel disk wheel, minimum 11R-22.5, steel belted tubeless radials, minimum load range G tires, on/off highway tread design. Front wheels to be highway tread design. Rear dual wheel application to be on-off, self-cleaning, lug design. All wheels to be equipped with highest temperature fluorescent loose lug indicators.
- 4.6.8 **BRAKES:** Full air, S-cam type, manufacture's heavy duty brake shoes, spring set parking brakes. Unit must be equipped with a 2 Stage "J" Brake. Front and rear automatic slack adjusters. Minimum 13 CFM compressor, Midland Pure Air Plus Dryer Model DA33100 or equal with automatic drain valves Model KN24000 or equal on all tanks. Spring set parking brakes on both rear axles. Quick connect couplings to be located in a protected area near the front bumper. Couplings will not be mounted to the bumper. Equipped with glad-hands suitable for ABS brakes. Female coupling ½" Milton M Type or approved equal to air tanks.
- 4.6.9 **STEERING:** Integral power steering
- 4.6.10 **FUEL SYSTEM:** Single left or right hand metal tank mounted under cab or dual left and right hand step tanks mounted under cab. Minimum to fuel capacity to be 70 gallons. Fuel filtration to include primary and secondary filtering systems with automatic water separator. Diesel Exhaust Fluid (DEF) tank and gauge to be equipped if applicable.
- 4.6.11 **EXHAUST SYSTEM:** Vertical tailpipe, heat guard, and turn out, mounted to allow full utilization of specified cab-to-trunion length
- 4.6.12 **ELECTRICAL:** Units to be equipped with three (3) minimum 12-volt, heavy duty batteries (total 2100 CCA).
- 4.6.13 **CAB:** Air suspension cab with, tilt hood, left and right hand cab grab handles, and manufacturer's standard AM/FM radio. Convex mirrors installed on both front fenders to provide view of obstacles on right side of truck from front bumper to rear wheels. Driver seat to be air ride, high back bucket type. Passenger seating to be bench seat. Seat belt will be safety orange (seat belt cover not acceptable).
- 4.6.14 **TOW HOOKS:** Two front tow hooks installed on frame and strengthened sufficiently to lift, pull, and tow truck without damaging bumper or other body parts. A wire rope, minimum 1" inch in diameter, shall be provided and fastened to both tow hooks to attach tow equipment.
- 4.6.15 **CLUTCH:** Minimum 15.5", 2 plate, heavy duty ceramic faced. Release bearing to have an extension hose.
- 4.6.16 **ACCESSORIES:** Tractor air brake system and 7-line trailer connector. Two (2) high intensity strobe lights to be installed, two (2) in the front. All strobe lights will operate automatically whenever ignition switch is on, and also from OEM dash mounted toggle switch with no key in ignition. A catwalk and access steps constructed of expanded metal grating or perforated metal to provide a non-slip surface. Aluminum will be acceptable unfinished. Provided and installed between the truck frame rails behind the cab and to extend all the way to the fifth wheel slide, to provide the operator a place to stand while making hydraulic, electrical, and pneumatic connections. Catwalk will be mounted as to not contact trailer while traversing uneven terrain. Vehicle shall have full coverage split rear steel fenders covering all wheels as to not contact trailer. Battery disconnect switch will be in installed in cab. Prior to delivery of unit to the City, vendor will reach out to end user department and identify the necessary connections for the trailer being utilized.
- 4.6.17 **FIFTH WHEEL:** Unit to be a non-tilt convertible fifth wheel design Holland FW 35, 36" air slide or proven equal. Fifth wheel to extend above rear fenders as to not cause trailer contacting fender under operations in uneven terrain.
- 4.6.18 **WET KIT:** The wet kit shall be configured to operate the current full ejection trailers currently in fleet. A hot shift PTO mounted and a direct mount pump will be installed on the truck transmission which produces 50-90% of engine RPM. A metal hydraulic reservoir to be mounted behind cab and be a minimum of 70 gallon capacity. Hydraulic controls to be mounted inside truck cab readily accessible to the driver. All valves and fittings required

to make wet kit and trailer completely operational to include one female quick coupler and one male quick coupler. Wet kit to be filled to capacity with SAE 10 Hydraulic oil.

4.6.19 Vehicle to be replaced is unit number 4480.

PICTURE NOT AVAILABLE

4.7	ITEM	QUANTITY	DESCRIPTION
	5	4	Cab Over 84" CA, 4x2 DRW Service Body with 5,000 lbs. Crane & Lift Gate
4.7.1	ENGINE: Minimum 210 HP engine.		
4.7.2	GVWR: approximately 19,500 lbs.		
4.7.4	FUEL SYSTEM: Fuel tank shall hold a minimum of 30 gallons of Ultra Low Sulfur Diesel. Unit to be equipped with a DEF tank.		
4.7.5	ELECTRICAL SYSTEM: Two (2) parallel connection 12V batteries with 1244 CCA and a 130AMP Alternator.		
4.7.6	TRANSMISSION/ DRIVE: Automatic with overdrive; 5 speed minimum; Power Steering; 4x2 design.		
4.7.7	AXLES: Front axle and spring capacity to be approximately 6,000 lbs. each and rear axles to support approximately 13,500 lbs.		
4.7.8	SUSPENSION: Heaviest Duty available to include heavy duty shock absorbers and independent struts with stabilization.		
4.7.9	BRAKES: Equipped with 4-wheel brake system, and front vented discs minimum		
4.7.10	DIMENSIONS: Cab to axle to be a minimum 84" inches.		
4.7.11	WHEELBASE: Wheelbase to be a minimum one hundred forty eight (148") inches.		
4.7.12	WHEELS & TIRES: Unit to be equipped with dual rear wheels (DRW). Wheels shall be 19.5x6.5 6-stud. Tires shall be 225/70R19.5. Tires will be all season pattern.		
4.7.13	SEATING: Capacity to be for three (3) individuals. Driver seat to be reclining with high back, passenger to be fixed high back, and middle to be fold away with back seat console.		
4.7.14	MIRRORS: OEM inside, standard type; outside, left and right, below eye level type, largest available offered by manufacturer, swing away type. Bottom of mirror to be adjustable convex type.		
4.7.15	BODY: Cab over design. Conventional body type will not be accepted.		
4.7.16	REAR BUMPER: Rear bumper must include a heavy duty 6" jaw width, 6" jaw opening with a 180 degree swivel base with lockdown and powder coated vise. Vise shall have large anvil work surface with built-in pipe jaws to handle various pipe sizes. Vise shall be mounted curb side on vise bracket. <i>Wilton 656 HD</i> or equal.		
4.7.17	LIFT GATE: Service body type lift gate to be installed in place of tailgate. Lift gate heavy duty hydraulic electric with a maximum 1,500 lbs. Platform treadplate to be 1 piece, steel, with a minimum 27" inch loading depth and a minimum 3" inch taper end. Lift gate to be painted Black.		
4.7.18	MISCELLEANOUS: Cab and Chassis to be equipped with an auxiliary start system. Model number SST 312; or equivalent. Auxiliary start system port to be located front of unit.		

4.7.19 UTILITY BODY SPECIFICATIONS

4.7.20 MATERIAL: 12 gauge steel construction

4.7.21 BODY LENGTH: Approximately 132" inches.

4.7.22 BODY WIDTH: Approximately 94" inches.

4.7.23 FLOOR WIDTH: Approximately 50" inches.

4.7.24 BODY HEIGHT: Approximately 52" inches.

4.7.25 CURBSIDE COMPARTMENTS: 4 compartments

4.7.25.1 Curbside front compartment to be raised compartment to fit gas bottles for welding approximately 34" wide. Compartment shall be capable of holding acetylene and oxygen bottles approximately 60" inches tall.

4.7.25.1 Curbside second compartment to have one (1) adjustable/ removable shelf with a minimum of four (4) adjustable dividers.

4.7.25.2 Curbside middle compartment to be horizontal and have a reinforced shelf, with a minimum of ten (10) adjustable divider. Compartment to be a minimum 20" inches deep, approximately 48" to 68" inches long, and a minimum of 17" inches high with heavy duty chain supports.

4.7.25.3 Curbside rear compartment to have roll-out tool box tray and one adjustable removable shelf with minimum of six (6) dividers.

4.7.26 STREETSIDE COMPARTMENTS: 3 compartments

4.7.26.1 Streetside front compartment must have one (1) adjustable/ removable shelf with a minimum of four (4) adjustable dividers.

4.7.26.2 Streetside middle compartment to be horizontal and have a reinforced shelf, with a minimum of ten (10) adjustable divider. Compartment to be a minimum 20" inches deep, approximately 58" to 68" inches long, and a minimum of 17" inches high with heavy duty chain supports.

4.7.26.3 Streetside rear compartment must have one (1) adjustable/ removable shelf with a minimum of four (4) adjustable dividers.

4.7.26.4 All doors to be weather-sealed and positive horizontal door holders. Unit shall have a set of grab handles. Unit shall have cab rear window grill for window protection. A master locking system must be used for all compartments.

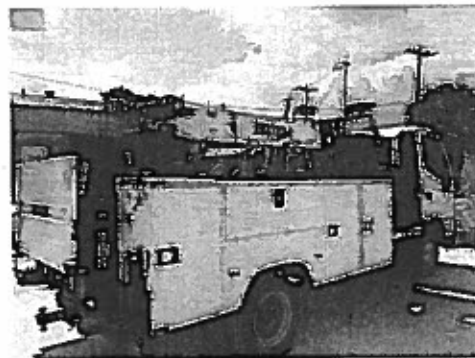
4.7.27 CRANE: Crane to be mounted curbside of unit. Utility body must be crane reinforced to accommodate up to a 1,400 lbs. crane. Crane must have a minimum lifting capacity of 5,000 lbs. @ 5ft and a minimum 1,000 lbs. @ 20ft. Crane boom must extend with power assist up to 16' feet and 20' through a wireless radio control. Crane must have 360° degree power rotation. Crane must have automatic overload protection. Utility body must contain heavy duty adjustable crane boom support.

4.7.28 OUTRIGGERS: Utility body must be equipped with a rear set of outriggers. Outriggers are to be manually operated.

4.7.29 BUMPER: Heavy duty, plain treadplate with a 12" inch raised mount. Bolted to the mount will be a 6" vice with replaceable jaws-curbside. Bumpers are to be designed to accommodate outriggers. Bumperettes are acceptable but design must not to interfere with operation of lift gate.

4.7.30 LIGHTS: Rear brake, parking, turn signal and back-up lights are to be mounted in highest possible location and must be hi intensity LED. Utility body must have once set (2 each) of rear work lights mounted on each side of the body facing rearward. Two 4" round amber strobe lights are to be mounted above or next to brake, parking and turn signal lights. All lights must be wired to up-fitter switches located inside of the cab of the truck.

- 4.7.31 **WELDER/AIR COMPRESSOR COMBINATION:** welder/air compressor is to be mounted on service body street side. Box must face forward position of service body. Welder to include a 50'feet spool of ground wire and 75'feet spool of stinger wire gauge 1-0. Unit is to come equipped with a rod holder. Welder is to have a minimum rated output of 250A AC/25V/ 100% and 250A DC/25V/ 100%. The generator output is to have minimum 10,000 watts peak, 9,000 watts continuous. Lug nuts must be provided to hook up ground & stinger to machine. Air compressor to supply 28 cfm at 175 psi, 100 percent duty cycle. Air compressor to be plumbed as to supply air to a 75 feet hose reel located on street side of the utility body. Acceptable model Miller Bobcat 200 Air-Pak Welder/Air Compressor or equal.
- 4.7.32 **LUBE CONTAINER BRACKETS:** Utility body floor to contain brackets and support to accommodate 5qty, 5 gallon Jerry Can containers that will hold various fluids. Dimensions will be approximately 14"W x 7" D x 18 3/4" H.
- 4.7.33 **ICE CHEST/ WATER BRACKET:** 5 gallon water cast with mount, mounted streetside on top of utility tool box body, mount shall accommodate 19" diameter water container.
- 4.7.34 **WHEEL CHOCKS.** Adequate sized wheel chocks to support a minimum 20,000 GVWR shall be supplied.
- 4.7.35 **SAFETY:** All vehicles will require an audible back up alarm and amber color LED strobe lights model Grote 77353, or equal. Strobe lights are to be installed on the front grill of chassis and rear panel body. Strobes to be wired to a factory type or toggle switch inside of the cab.
- 4.7.36 Vehicle to be replaced is #4997, #4998, #5511, and one new truck added to the City fleet.
- 4.7.37 Photos not available because this is a new design to be used for a mechanic truck. This truck is compatible for an Isuzu NPR, Hino 155, and Chevrolet 4500HD/XD; all other cab designs are accepted that are comparable.

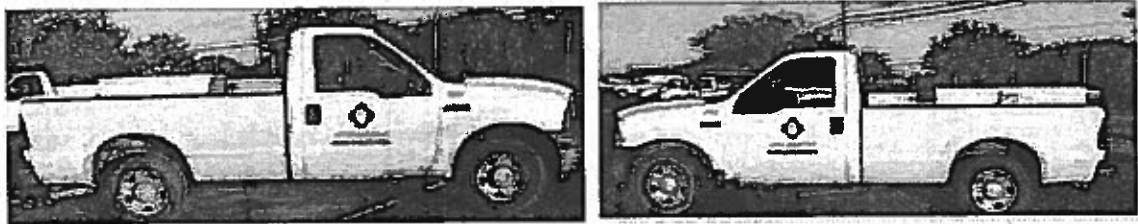


ADD:

4.8	ITEM	QUANTITY	DESCRIPTION
	6	1	3/4 Ton Regular Cab Long Bed Pickup

- 4.8.1 **ENGINE:** 6 cylinders or greater with a minimum 300 HP.
- 4. 8.2 **GVWR:** Minimum of 6,000 lbs.
- 4. 8.3 **TRANSMISSION/DRIVE:** Automatic with overdrive; 5 speed minimum; Power Steering; 4x2 design.
- 4.8.4 **SUSPENSION:** Heaviest Duty available to include heavy duty shock absorbers and independent struts with stabilization.
- 4.8.5 **DIMENSIONS:** Regular cab configuration. Pick-up box length shall be a minimum of 95 inches. Wheelbase shall be a minimum 130 inches.
- 4.8.6 **BRAKES:** Equipped with 4-wheel automatic braking system and front vented discs at minimum.

- 4.8.7 TIRES & WHEELS: A tire pressure monitoring system is required. Tires must meet or exceed the minimum gross vehicle weight rating of vehicle.
- 4.8.9 FUEL SYSTEM: Fuel tank shall hold a minimum of 20 gallons of Unleaded 87 Octane.
- 4.8.10 SEATING: Vinyl seating and upholstery.
- 4.8.11 FLOOR: Vinyl flooring throughout and include rubber floor mats.
- 4.8.12 BUMPERS: Factory Style front bumper with step type rear bumper.
- 4.8.13 TOW PACKAGE: OEM rear bumper and tow package to include receiver hitch with 2" hitch opening, OEM in-cab mounted trailer brake controller and both a 4-Way flat vehicle connector and 7-Way round vehicle connector (Flat Pin).
- 4.8.14 TOOLBOXES: Unit shall be equipped with two (2 qty) toolboxes. Both shall be bed mounted and weather resistant white/black/polished toolbox, aluminum preferred. Toolboxes must have toolbox shocks that do not interfere with closing of the lid. Toolbox must be lockable with a key.
 - 4.8.14.1 TOOLBOX 1: The toolbox must be the entire width of the bed and plush mounted against the cab to allow easy access. The measurements shall be minimum 68"L 20"W x 18"H.
 - 4.8.14.2 TOOLBOX 2: The toolbox shall be securely mounted on the driver side of the unit. The length of the unit shall be a minimum of 60" inches in length. The unit shall be a minimum 12" in width. The depth of the toolbox shall be deepest available for truck offered.
- 4.8.15 This vehicle will replace truck #2653.



005 - SUPPLEMENTAL TERMS & CONDITIONS

Original Contract Term.

This contract shall begin upon the effective date of the ordinance awarding the contract, or date specified in the award letter if this contract does not exceed \$50,000. This contract shall terminate upon completion of all work described herein or delivery of all goods ordered, as applicable.

Liquidated Damages for Delay:

The parties agree that the actual damages that might be sustained by the City by reason of the breach by Vendor of its covenant to make delivery within the time specified on the Price Schedule, or later delivery per the Schedule provided by City, is uncertain and would be difficult of ascertainment, and that the sum of up to \$100.00 per day per unit for each day that delivery is late would be a reasonable compensation for such breach. Vendor hereby promises to pay, and City hereby agrees to accept, such sum as liquidated damages, and not as a penalty, in the event of such breach. Furthermore, the parties agree that City may withhold said liquidated damages from any payments due to Vendor hereunder. If Vendor's delay exceeds 30 days, City may, at its option, elect to terminate this contract in whole or in part. In such event, City may pursue actual damages, rather than applying this liquidated damages provision

Insurance:

Prior to the commencement of any work under this Agreement, Vendor shall furnish copies of all required endorsements and completed Certificate(s) of Insurance to the City's Finance Department - Purchasing Division, which shall be clearly labeled "Purchase of Light & Medium Duty Trucks" in the Description of Operations block of the Certificate. The Certificate(s) shall be completed by an agent and signed by a person authorized by that insurer to bind coverage on its behalf. City will not accept a Memorandum of Insurance or Binder as proof of insurance. The certificate(s) must have the agent's signature and phone number, and be mailed, with copies of all applicable endorsements, directly from the insurer's authorized representative to City. City shall have no duty to pay or perform under this Agreement until such certificate and endorsements have been received and approved by City's Finance Department - Purchasing Division. No officer or employee, other than City's Risk Manager, shall have authority to waive this requirement.

City reserves the right to review the insurance requirements of this Article during the effective period of this Agreement and any extension or renewal hereof and to modify insurance coverages and their limits when deemed necessary and prudent by City's Risk Manager based upon changes in statutory law, court decisions, or circumstances surrounding this Agreement. In no instance will City allow modification whereby City may incur increased risk.

A Vendor's financial integrity is of interest to City; therefore, subject to Vendor's right to maintain reasonable deductibles in such amounts as are approved by City, Vendor shall obtain and maintain in full force and effect for the duration of this Agreement, and any extension here of, at Vendor's sole expense, insurance coverage written on an occurrence basis, unless otherwise indicated, by companies authorized to do business in the State of Texas and with an A.M Best's rating of no less than A- (VII), in the following types and for an amount not less than the amount listed below:

TYPE	AMOUNTS
1. Workers' Compensation	Statutory
2. Employers' Liability	\$1,000,000/\$1,000,000/\$1,000,000
3. Commercial General Liability Insurance to include coverage for the following: a. Premises/Operations b. Products/Completed Operations c. Personal/Advertising Injury	For <u>Bodily Injury</u> and <u>Property Damage</u> of \$1,000,000 per occurrence; \$2,000,000 General Aggregate, or its equivalent in Umbrella or Excess Liability Coverage
4. Business Automobile Liability a. Owned/leased vehicles b. Non-owned vehicles c. Hired Vehicles	Combined <u>Single Limit</u> for <u>Bodily Injury</u> and <u>Property Damage</u> of \$1,000,000 per occurrence

Vendor agrees to require, by written contract, that all subcontractors providing goods or services hereunder obtain the same insurance coverages required of Vendor herein, and provide a certificate of insurance and endorsement that names Vendor and City as additional insureds. Vendor shall provide City with said certificate and endorsement prior to the commencement of any work by the subcontractor. This provision may be modified by City's Risk Manager, without subsequent City Council approval, when deemed necessary and prudent, based upon changes in statutory law, court decisions, or circumstances surrounding this agreement. Such modification may be enacted by letter signed by City's Risk Manager, which shall become a part of the contract for all purposes.

As they apply to the limits required by City, City shall be entitled, upon request and without expense, to receive copies of the policies, declaration page, and all endorsements thereto and may require the deletion, revision, or modification of particular policy terms, conditions, limitations, or exclusions (except where policy provisions are established by law or regulation binding upon either of the parties hereto or the underwriter of any such policies). Vendor shall be required to comply with any such requests and shall submit a copy of the replacement certificate of insurance to City at the address provided below within 10 days of the requested change. Vendor shall pay any costs incurred resulting from said changes.

City of San Antonio
Attn: Finance Department-Purchasing Division
P.O. Box 839966
San Antonio, Texas 78283-3966

Vendor agrees that with respect to the above required insurance, all insurance policies are to contain or be endorsed to contain the following provisions:

Name City, its officers, officials, employees, volunteers, and elected representatives as additional insureds by endorsement, as respects operations and activities of, or on behalf of, the named insured performed under contract with City, with the exception of the workers' compensation and professional liability policies;

Provide for an endorsement that the "other insurance" clause shall not apply to the City of San Antonio where City is an additional insured shown on the policy;

Workers' compensation, employers' liability, general liability and automobile liability policies will provide a waiver of subrogation in favor of City; and

Provide advance written notice directly to City of any suspension, cancellation, non-renewal or material change in coverage, and not less than ten (10) calendar days advance notice for nonpayment of premium.

Within five (5) calendar days of a suspension, cancellation or non-renewal of coverage, Vendor shall provide a replacement Certificate of Insurance and applicable endorsements to City. City shall have the option to suspend Vendor's performance should there be a lapse in coverage at any time during this contract. Failure to provide and to maintain the required insurance shall constitute a material breach of this Agreement.

In addition to any other remedies City may have upon Vendor's failure to provide and maintain any insurance or policy endorsements to the extent and within the time herein required, City shall have the right to order Vendor to stop work hereunder, and/ or withhold any payment(s) which become due to Vendor hereunder until Vendor demonstrates compliance with the requirements hereof.

Nothing herein contained shall be construed as limiting in any way the extent to which Vendor may be held responsible for payment of damages to persons or property resulting from Vendor's or its subcontractors' performance of the work covered under this Agreement.

It is agreed that Vendor's insurance shall be deemed primary and non-contributory with respect to any insurance or self insurance carried by City for liability arising out of operations under this Agreement.

It is understood and agreed that the insurance required is in addition to and separate from any other obligation contained in this Agreement and that no claim or action by or on behalf of City shall be limited to insurance coverage provided.

Vendor and any subcontractors are responsible for all damage to their own equipment and/or property.

Incorporation of Attachments:

Each of the attachments listed below is an essential part of this contract, which governs the rights and duties of the parties, incorporated herein by reference, and shall be interpreted in the order of priority as appears below, with this document taking priority over all attachments:

Attachment A – Price Schedule

Attachment B – City of San Antonio Local Preference Program Forms

Attachment C – Veteran-Owned Small Business Preference Program Tracking Form

006 - GENERAL TERMS & CONDITIONS

Electronic Bid Equals Original. If Vendor is submitting an electronic bid, City and Vendor each agree that this transaction may be conducted by electronic means, as authorized by Chapter 322, Texas Business & Commerce Code, known as the Electronic Transactions Act.

Delivery of Goods/Services.

Destination Contract. Vendor shall deliver all goods and materials F.O.B., City of San Antonio's designated facility, inside delivery, freight prepaid, to the address provided in this IFB or, if different, in the Purchase Order. Vendor shall bear the risk of loss until delivery. Freight charges will be paid only when expedited delivery is requested and approved in writing by the City. Vendor shall be responsible for furnishing necessary personnel or equipment and/or making necessary arrangements to off load at City of San Antonio facility, unless otherwise noted herein.

Failure to Deliver. When delivery is not met as provided for in the contract, City may make the purchase on the open market, with any cost in excess of the contract price paid by Vendor, in addition to any other direct, indirect, consequential or incidental damages incurred by City as a result thereof. In addition, Vendor may be removed from the City's list of eligible bidders.

Purchase Orders. Each time a City department wishes to place an order against this contract, it will issue Vendor a purchase order. Vendor must have the purchase order before making any delivery.

Acceptance by City. City shall have a reasonable time (but not less than 30 days) after receipt to inspect the goods and services tendered by Vendor. City at its option may reject all or any portion of such goods or services which do not, in City's sole discretion, comply in every respect with all terms and conditions of the contract. City may elect to reject the entire goods and services tendered even if only a portion thereof is nonconforming. If City elects to accept nonconforming goods and services, City, in addition to its other remedies, shall be entitled to deduct a reasonable amount from the price thereof to compensate City for the nonconformity. Any acceptance by City, even if non-conditional, shall not be deemed a waiver or settlement of any defect in such goods and services.

Testing. After award of contract, City may, at its sole option, test the product delivered to ensure it meets specifications. Initial testing shall be at City's expense. However, if the product does not meet specifications, Vendor shall reimburse City for the costs of testing. City may withhold the cost of testing from any amounts owed to Vendor under this or any other contract, or invoice Vendor for same. If invoiced, Vendor shall pay City within 30 calendar days' of the invoice.

Warranty. A minimum of 90-days product guarantee or the manufacturer's standard commercial warranty, whichever is greater, shall apply to all products and/or services purchased under this IFB, unless otherwise specified in the Specifications/Scope of Services section of this IFB. This warranty shall provide for replacement of defective merchandise, parts, and labor, and shall include pick-up of the defective merchandise from City and delivery of the replacement(s) to the same location. The warranty shall be effective from the date of acceptance of the merchandise, or completion of the service, as applicable.

REJECTION OF DISCLAIMERS OF WARRANTIES & LIMITATIONS OF LIABILITY. ANY TERM OR CONDITION IN ANY DOCUMENT FURNISHED BY VENDOR, DISCLAIMING THE IMPLIED WARRANTY OF MERCHANTABILITY OR OF FITNESS FOR A PARTICULAR PURPOSE, OR ATTEMPTING TO LIMIT VENDOR'S LIABILITY SHALL BE OF NO FORCE OR EFFECT, AND SHALL BE STRICKEN FROM THE CONTRACT DOCUMENTS AS IF NEVER CONTAINED THEREIN.

Invoicing and Payment.

Address for Invoices. All original invoices must be sent to: City of San Antonio, Attn: Accounts Payable, P.O. Box 839976, San Antonio, Texas 78283-3976.

Information Required On Invoice.

All invoices must be in a form and content approved by the City. City may require modification of invoices if necessary in order to satisfy City that all billing is proper and pursuant to the terms of the contract. Invoices are required to show each City Purchase Order Number. Invoices must be legible. Items billed on invoices must be specific as to applicable stock, manufacturer, catalog or part number (if any). All invoices must show unit prices for each item being billed, the quantity of items being billed and the total for each item, as well as the total for all items on the invoice. If prices are

based on list prices basis, then the list prices, the percentage discount or percentage surcharge, net unit prices, extensions and net total prices must be shown. Prompt payment discounts offered shall be shown separately on the invoice.

Payment by City.

In accordance with the Texas Prompt Payment Act, City shall have not less than 30 days to pay for goods or services. Time for payment, including payment under discount terms, will be computed from the later of: (1) the date City receives conforming goods under the contract; (2) the date performance of the service under the contract is completed; or (3) the date City receives a correct and valid invoice for the goods or services. Payment is deemed to be made on the date of mailing of the check. Payment is made in US dollars only.

This provision shall not apply where there is a bona fide dispute between City and Vendor about the goods delivered or the service performed that causes the payment to be late, or where the invoice is not mailed to the address provided herein.

The payment amount due on invoices may not be manually altered by City personnel. Once disputed items are reconciled, Vendor must submit a corrected invoice or a credit memorandum for the disputed amount. City will not make partial payments on an invoice where there is a dispute.

NECESSITY OF TIMELY INVOICE / WAIVER OF PAYMENT. NOTWITHSTANDING THE FORGOING, THE CITY CANNOT PAY FOR ANY GOODS OR SERVICES WITHOUT AN INVOICE. VENDOR MUST INVOICE CITY NO LATER THAN 90 CALENDAR DAYS FROM THE DATE GOODS ARE DELIVERED OR SERVICES RENDERED. FAILURE TO SUBMIT AN INVOICE WITHIN SAID 90 DAYS SHALL NEGATE ANY LIABILITY ON THE PART OF CITY AND CONSTITUTE A WAIVER BY VENDOR OF ANY AND ALL RIGHT OR CLAIMS TO COLLECT MONEYS THAT VENDOR MAY RIGHTFULLY BE OTHERWISE ENTITLED TO FOR GOODS OR SERVICES PERFORMED.

The total price for all goods and/or services is shown on the Price Schedule. No additional fees or expenses of Vendor shall be charged by Vendor nor be payable by City. The parties hereby agree that all compensable expenses of Vendor are shown on the Price Schedule. If there is a discrepancy on the Price Schedule between the unit price for an item, and the extended price, the unit price shall govern.

Change Orders. In order to comply with Texas law governing purchases made by municipalities, the following rules shall govern all change orders made under this contract.

Any change orders that become necessary during the term of this contract as a result of changes in plans, specifications, quantity of work to be performed, materials, equipment or supplies to be furnished may be approved by the Director, provided that such change orders:

- are made in writing, signed by the Director;
- do not involve an increase or decrease in contract price of more than \$25,000; and
- sufficient funds have already been allocated by City or are available to the Director to cover any increase in contract price.

Any other change will require approval of the City Council, City of San Antonio.

Changes that do not involve an increase in contract price may, however, be made by the Director.

No oral statement of any person shall modify or otherwise change, or affect the terms, conditions or specifications stated herein.

Termination.

Termination-Breach. Should Vendor fail to fulfill in a timely and proper manner, as determined solely by the Director, its material obligations under this contract, or violate any of the material terms of this contract, City shall have the right to immediately terminate the contract in whole or in part. Notice of termination shall be provided in writing to Vendor, effective upon the date set forth in the notice. City may, in City's sole discretion, provide an opportunity for Vendor to cure the default. If City elects to offer an opportunity to cure, City shall provide notice to Vendor specifying the matters in default and the cure period. If Vendor fails to cure the default within the cure period, City shall have the right, without further notice, to terminate the contract in whole or in part. Such termination shall not relieve Vendor of any liability to the City for damages sustained by virtue of any breach by Vendor.

Termination-Notice. City may terminate this contract, in whole or in part, without cause. City shall be required to give Vendor notice ten days prior to the date of termination of the contract without cause.

Termination-Funding. City retains the right to terminate this contract at the expiration of each of City's budget periods. This contract is conditioned on a best efforts attempt by City to obtain and appropriate funds for payment of any debt due by City herein.

Termination by City may be effected by Director, without further action by the San Antonio City Council.

Independent Contractor. Vendor covenants and agrees that it is an independent contractor and not an officer, agent, servant or employee of City. City shall not be liable for any claims which may be asserted by any third party occurring in connection with the services to be performed by Vendor under this contract and that Vendor has no authority to bind City. The doctrine of respondeat superior shall not apply as between City and Vendor.

INDEMNIFICATION.

VENDOR covenants and agrees to FULLY INDEMNIFY, DEFEND and HOLD HARMLESS, CITY and the elected officials, employees, officers, directors, volunteers and representatives of CITY, individually and collectively, from and against any and all costs, claims, liens, damages, losses, expenses, fees, fines, penalties, proceedings, actions, demands, causes of action, liability and suits of any kind and nature, including but not limited to, personal or bodily injury, death and property damage, made upon CITY directly or indirectly arising out of, resulting from or related to VENDOR'S activities under this Agreement, including any acts or omissions of VENDOR, any agent, officer, director, representative, employee, consultant or subcontractor of VENDOR, and their respective officers, agents employees, directors and representatives while in the exercise of the rights or performance of the duties under this Agreement. The indemnity provided for in this paragraph shall not apply to any liability resulting from the negligence of CITY, its officers or employees, in instances where such negligence causes personal injury, death, or property damage. IN THE EVENT VENDOR AND CITY ARE FOUND JOINTLY LIABLE BY A COURT OF COMPETENT JURISDICTION, LIABILITY SHALL BE APPORTIONED COMPARATIVELY IN ACCORDANCE WITH THE LAWS FOR THE STATE OF TEXAS, WITHOUT, HOWEVER, WAIVING ANY GOVERNMENTAL IMMUNITY AVAILABLE TO THE CITY UNDER TEXAS LAW AND WITHOUT WAIVING ANY DEFENSES OF THE PARTIES UNDER TEXAS LAW. In addition, Vendor agrees to indemnify, defend, and hold the City harmless from any claim involving patent infringement, trademarks, trade secrets, and copyrights on goods supplied.

The provisions of this INDEMNITY are solely for the benefit of the parties hereto and not intended to create or grant any rights, contractual or otherwise, to any other person or entity. VENDOR shall advise CITY in writing within 24 hours of any claim or demand against CITY or VENDOR known to VENDOR related to or arising out of VENDOR's activities under this AGREEMENT and shall see to the investigation and defense of such claim or demand at VENDOR's cost. CITY shall have the right, at its option and at its own expense, to participate in such defense without relieving VENDOR of any of its obligations under this paragraph.

Assignment. Except as otherwise stated herein, Vendor may not sell, assign, pledge, transfer or convey any interest in this contract, nor delegate the performance of any duties hereunder, by transfer, by subcontracting or any other means, without the consent of Director. As a condition of such consent, if such consent is granted, Vendor shall remain liable for completion of the services and provision of goods outlined in this contract in the event of default by the successor Vendor, assignee, transferee or subcontractor. Any attempt to transfer, pledge or otherwise assign this Contract without said written approval, shall be void ab initio and shall confer no rights upon any third person.

Ownership of Documents. Pursuant to Texas Local Government Code Chapter 201, any and all Records produced by Vendor pursuant to the provisions of this contract are the exclusive property of City; and no such Record shall be the subject of any copyright or proprietary claim by Vendor. The term "Record" as used herein shall mean any document, paper, letter, book, map, photograph, sound or video recording, microfilm, magnetic tape, electronic medium, or other information recording medium, regardless of physical form or characteristic. Vendor understands and acknowledges that as the exclusive owner of any and all such Records, City has the right to use all such Records as City desires, without restriction.

Records Retention.

Vendor and its subcontractors, if any, shall properly, accurately and completely maintain all documents, papers, and records, and other evidence pertaining to the services rendered hereunder ("Documents"), and shall make such Documents available to the City at their respective offices, at all reasonable times and as often as City may deem necessary during the contract period, including any extension or renewal hereof, and the record retention period

established herein, for purposes of audit, inspection, examination, and making excerpts or copies of same by City and any of its authorized representatives.

Vendor shall retain any and all Documents produced as a result of services provided hereunder for a period of four years ("Retention Period") from the date of termination of the contract. If, at the end of the Retention Period, there is litigation or other questions arising from, involving or concerning these Documents or the services provided hereunder, Vendor shall retain the records until the resolution of such litigation or other such questions. Vendor acknowledges and agrees that City shall have access to any and all such Documents at any and all times, as deemed necessary by City, during said Retention Period. City may, at its election, require Vendor to return the documents to City at Vendor's expense prior to or at the conclusion of the Retention Period. In such event, Vendor may retain a copy of the documents.

Vendor shall notify City, immediately, in the event Vendor receives any requests for information from a third party, which pertain to the Documents referenced herein. Vendor understands and agrees that City will process and handle all such requests.

Severability. If any clause or provision of this contract is held invalid, illegal or unenforceable under present or future federal, state or local laws, including but not limited to the City Charter, City Code, or ordinances of the City of San Antonio, Texas, then and in that event it is the intention of the parties hereto that such invalidity, illegality or unenforceability shall not affect any other clause or provision hereof and that the remainder of this contract shall be construed as if such invalid, illegal or unenforceable clause or provision was never contained herein. It is also the intention of the parties hereto that in lieu of each clause or provision of this contract that is invalid, illegal, or unenforceable, there be added as a part of the contract a clause or provision as similar in terms to such invalid, illegal or unenforceable clause or provision as may be possible, legal, valid and enforceable.

Compliance with Law. Vendor shall provide and perform all services required under this Agreement in compliance with all applicable federal, state and local laws, rules and regulations.

Certifications. Vendor warrants and certifies that Vendor and any other person designated to provide services hereunder has the requisite training, license and/or certification to provide said services, and meets all competence standards promulgated by all other authoritative bodies, as applicable to the services provided herein.

Non-waiver of Performance. Unless otherwise specifically provided for in this Agreement, a waiver by either Party of a breach of any of the terms, conditions, covenants or guarantees of this Agreement shall not be construed or held to be a waiver of any succeeding or preceding breach of the same or any other term, condition, covenant or guarantee herein contained. Further, any failure of either Party to insist in any one or more cases upon the strict performance of any of the covenants of this Agreement, or to exercise any option herein contained, shall in no event be construed as a waiver or relinquishment for the future of such covenant or option. In fact, no waiver, change, modification or discharge by either party hereto of any provision of this Agreement shall be deemed to have been made or shall be effective unless expressed in writing and signed by the party to be charged. No act or omission by a Party shall in any manner impair or prejudice any right, power, privilege, or remedy available to that Party hereunder or by law or in equity, such rights, powers, privileges, or remedies to be always specifically preserved hereby.

Venue. Venue of any court action brought directly or indirectly by reason of this contract shall be in Bexar County, Texas. This contract is made and is to be performed in Bexar County, Texas, and is governed by the laws of the State of Texas.

Non-discrimination. As a condition of entering into this agreement, Vendor represents and warrants that it will comply with City's Commercial Nondiscrimination Policy, as described under Section IILC.1 of the SBEDA Ordinance. As part of such compliance, Vendor shall not discriminate on the basis of race, color, religion, ancestry or national origin, sex, age, marital status, sexual orientation, or on the basis of disability or other unlawful forms of discrimination in the solicitation, selection, hiring or commercial treatment of subcontractors, vendors, suppliers, or commercial customers, nor shall Vendor retaliate against any person for reporting instances of such discrimination. Vendor shall provide equal opportunity for subcontractors, vendors and suppliers to participate in all of its public sector and private sector subcontracting and supply opportunities, provided that nothing contained in this clause shall prohibit or limit otherwise lawful efforts to remedy the effects of marketplace discrimination that have occurred or are occurring in the City's Relevant Marketplace. Vendor understands and agrees that a material violation of this clause shall be considered a material breach of this agreement and may result in termination of this agreement, disqualification of Vendor from participating in City contracts, or other sanctions. This clause is not enforceable by or for the benefit of, and creates no obligation to, any third party. Vendor shall include this nondiscrimination clause in all subcontracts for the performance of this contract.

As a party to this contract, Vendor understands and agrees to comply with the *Non-Discrimination Policy* of the City of San Antonio contained in Chapter 2, Article X of the City Code and further, shall not discriminate on the basis of race, color, religion, national origin, sex, sexual orientation, gender identity, veteran status, age or disability, unless exempted by state or federal law, or as otherwise established herein.

Prohibition on Contracts with Companies Boycotting Israel

Texas Government Code §2270.002 provide that a governmental entity may not enter into a contract with a company for goods or services, unless the contract contains a written verification from the company that it:

- (1) does not boycott Israel; and
- (2) will not boycott Israel during the term of the contract.

"Boycott Israel" means refusing to deal with, terminating business activities with, or otherwise taking any action that is intended to penalize, inflict economic harm on, or limit commercial relations specifically with Israel, or with a person or entity doing business in Israel or in an Israeli-controlled territory, but does not include an action made for ordinary business purposes.

"Company" means a for-profit sole proprietorship, organization, association, corporation, partnership, joint venture, limited partnership, limited liability partnership, or limited liability company, including a wholly owned subsidiary, majority-owned subsidiary, parent company, or affiliate of those entities or business associations that exists to make a profit.

By submitting an offer to or executing contract documents with the City of San Antonio, Company hereby verifies that it does not boycott Israel, and will not boycott Israel during the term of the contract. City's hereby relies on Company's verification. If found to be false, City may terminate the contract for material breach.

CONTRACTS WITH COMPANIES ENGAGED IN BUSINESS WITH IRAN, SUDAN, OR FOREIGN TERRORIST ORGANIZATIONS PROHIBITED. Texas Government Code §2252.152 provides that a governmental entity may not enter into a governmental contract with a company that is identified on a list prepared and maintained under Texas Government Code §§2270.0201 or 2252.153. Vendor hereby certifies that it is not identified on such a list. City hereby relies on Vendor's certification. If found to be false, or if Vendor is identified on said list during the course of its contract with City, City may terminate the Contract for material breach.

Delinquent Taxes. In the event that Vendor is or subsequently becomes delinquent in the payment of taxes owed to the City of San Antonio, the City reserves the right to deduct any delinquent taxes from payments that the City may owe to the delinquent Vendor as a result of this contract.

Binding Contract. This contract shall be binding on and inure to the benefit of the parties hereto and their respective heirs, executors, administrators, legal representatives, and successors and assigns, except as otherwise expressly provided for herein.

Entire Agreement. This contract, including City's final electronically posted online version, together with its authorizing ordinance and its price schedule(s), attachments, purchase orders, and exhibits, if any, constitutes the final and entire agreement between the parties hereto and contains all of the terms and conditions agreed upon. No other agreements, oral or otherwise, regarding the subject matter of this contract shall be deemed to exist or to bind the parties hereto, unless same be in writing, dated subsequent to the date hereof, and be duly executed by the parties, in accordance with the Change Order provision herein. Parties agree that City's final electronically posted online version of this solicitation contains the agreed upon specifications, scope of services, and terms and conditions of this contract, and shall control in the event of a conflict with any printed version signed and submitted by Vendor.

007 - SIGNATURE PAGE

By submitting a bid, whether electronically or by paper, Bidder represents that:

(s)he is authorized to bind Bidder to fully comply with the terms and conditions of City's Invitation for Bid for the prices stated therein;

(s)he has read the entire document, including the final version issued by City, and agreed to the terms therein;

Bidder is in good standing with the Texas State Comptroller's Office; and

to the best of his/her knowledge, all information is true and correct.

If submitting your bid by paper, complete the following and sign on the signature line below. Failure to sign and submit this Signature Page will result in rejection of your bid.

Bidder Information:

Please Print or Type:

Vendor ID No.: V1006439

Signer's Name: Keith Shoffstall

Name of Business: Grande Truck Center

Street Address: 4562 IH-10 East

City, State, Zip Code: San Antonio, TX 78219

Email Address: kshoffstall@grandetruck.com

Telephone No.: 210-666-7112

Fax No.: 210-666-7214

City's Solicitation No.: 6100010298

Keith Shoffstall
Signature of Person Authorized to Sign Bid

008 - STANDARD DEFINITIONS

Whenever a term defined by the Uniform Commercial Code ("UCC"), as enacted by the State of Texas, is used in the Contract, the UCC definition shall control, unless otherwise defined in the Contract.

All-or-None Bid - an invitation to bid in which the City will award the entire contract to one bidder only.

Alternate Bid - two or more bids with substantive variations in the item or service offered from the same bidder in response to a solicitation.

Assignment - a transfer of claims, rights or interests in goods, services or property.

Bid - a complete, signed response to a solicitation. The term "bid" is synonymous with the term "offer".

Bid Opening - a public meeting during which bid responses are disclosed.

Bidder - a person, firm or entity that submits a bid in response to a solicitation. The bidder whose bid is accepted by City may also be referred to herein as Contractor, Vendor or Supplier.

Bid Bond or Bid Guarantee - security to ensure that Bidder (a) will not withdraw the bid within the period specified for acceptance, and (b) will furnish any required bonds or performance guarantees, and any necessary insurance within the time specified in the solicitation.

Change Order - a change to the plans or specifications of the contract, or an increase or decrease in the quantity of work to be performed or of materials, equipment, or supplies to be furnished, issued by the Director after the bid has been accepted by the City.

City - the City of San Antonio, a Texas home-rule municipal corporation.

Contract - the binding legal agreement between the City and Vendor.

Contractor - the bidder whose bid is accepted by the City and is, therefore, the person, firm or entity providing goods or services to the City under a contract.

Director - the Director of City's Purchasing & General Services Department, or Director's designee.

Equal or Equivalent - terms to indicate that similar products or other brands may be acceptable for purchase if specifications and functional requirements are met.

Invitation for Bid (IFB) - a solicitation requesting pricing for a specified good or a service.

Line Item - a listing of items in a bid for which a bidder is expected to provide separate pricing.

Low Bid - a bid which is lowest in price, but may not meet all requirements or specifications.

Lowest Responsible Bidder - the bidder whose bid meets all requirements of the specifications, terms and conditions of the IFB and results in the lowest cost to the City in an award based solely on price, taking into consideration the bidder's competence and qualifications to perform the contract.

Non-Responsive Bid - a bid or offer that does not comply with the terms and conditions, or specifications and/or requirements of the IFB.

Offer - a complete, signed response to an IFB that, if accepted, would bind the bidder to perform the resultant contract. The term "offer" is synonymous with the term "bid".

Payment Bond - a particular form of security provided by the contractor to protect the City against loss due to the contractor's failure to pay suppliers and subcontractors.

Performance Bond - a particular form of security provided by the contractor to protect the City against loss due to the contractor's inability or unwillingness to complete the contract as agreed.

Performance Deposit - security provided by the contractor to protect the City against loss due to the contractor's inability or unwillingness to complete the contract as agreed.

Pre-Submittal Conference - a meeting conducted by the City, held in order to allow bidders to ask questions about the proposed contract and particularly, the contract specifications.

Purchase Order - a validly issued order placed by an authorized City department for the purchase of goods or services, written on the City's standard purchase order form, and which is Vendor's authority to deliver to and invoice the City for the goods or services specified in an IFB for the price stated in Vendor's bid.

Responsible Bidder - a bidder who is known to have the necessary competence and qualifications to perform and provide all requirements of an intended contract.

Responsive Bidder - a bidder who tenders a bid which meets all requirements of the invitation to bid and is a responsible bidder.

Sealed Bid - a bid submitted as a sealed document, whether hard copy or electronic, by a prescribed time to the location indicated in the IFB. The contents of the bid will not be made public prior to the bid opening.

Specifications - a description of what the City requires and what the bidder must offer; a description of the physical or functional characteristics of a product or material, or the nature of a service or construction item.

Subcontractor - a person, firm or entity providing goods or services to a vendor to be used in the performance of the Vendor's obligations under the contract with the City.

Supplier - the bidder whose bid is accepted by the City and is, therefore, the person, firm or entity providing goods or services to the City under a contract.

Vendor - the bidder whose bid is accepted by the City and is, therefore, the person, firm or entity providing goods or services to the City under a contract.

Waiver of Irregularity - noting, but disregarding an immaterial variance within a bid.

009 - ATTACHMENTS

Attachment A

PRICE SCHEDULE

Local Preference Program (LPP) Ordinance

The 82nd Texas Legislature adopted a revision to the law that allowed the City of San Antonio (City) to adopt a policy that would grant contracting preferences to local businesses for certain types of contracts. The City adopted such a policy, known as the Local Preference Program, described in the San Antonio City Code Chapter 2, Article XII, effective for solicitations issued after May 1, 2013.

This solicitation is subject to the Local Preference Program. For more information on the program, refer to the Local Preference Program Identification Form attached to this solicitation.

In order to receive consideration the Local Bidder must complete and return the attached Local Preference Identification Form.

ITEM PRICING

ITEM	QUANTITY	DESCRIPTION
1	1	Propane Powered 3/4 Ton Regular Cab Pickup Truck Long Bed

PRICE EACH: \$ 38,082.⁰⁰

TOTAL: \$ 38,082.⁰⁰

YEAR, MAKE & MODEL CAB & CHASSIS OFFERED:

2019 Ford F250 R1C 4x2

SPECIFIC MAKE & MODEL OF ENGINE OFFERED (INCLUDE SAE NET HP):

Ford GAS 6-2 L 385 HP

TRANSMISSION OFFERED:

Ford 6 Speed Automatic

CAB & CHASSIS WARRANTY:

Basic 36 months or 36,000 Miles

CAB & CHASSIS WARRANTY SERVICE PROVIDER FACILITY NAME:

Grande Truck Center

CAB & CHASSIS WARRANTY SERVICE PROVIDER FACILITY ADDRESS:

4562 IH-10 East

San Antonio, TX 78219

YEAR, MAKE & MODEL PROPANE SYSTEM OFFERED:

2018 NAT G ICom JTG 11

PROPANE SYSTEM WARRANTY:

12 months

PROPANE SYSTEM WARRANTY SERVICE PROVIDER FACILITY NAME:

NAT G

PROPANE SYSTEM WARRANTY SERVICE PROVIDER FACILITY ADDRESS:

4562 IH-10 East

San Antonio, TX 78219

DELIVERY WILL BE MADE WITHIN 150-210 CALENDER DAYS AFTER ISSUANCE OF PURCHASE ORDER.

PRODUCTION CUT-OFF DATE: 10/25/2018

INDICATE THE LAST DAY THAT THE CITY CAN PLACE ORDERS UNDER THIS CONTRACT WITHOUT MISSING THE PRODUCTION CUT OFF DATE: 10/25/2018.

BID PRICES SHALL REMAIN FIRM FOR ALL ORDERS PLACED PRIOR TO THIS CUT OFF DATE. IN THE EVENT THAT CITY DOES NOT AWARD A CONTRACT PRIOR TO PRODUCTION CUT OFF DATE, CAN BIDDER PROVIDE BID ITEMS, AT THE BID PRICE SUBMITTED, AFTER THE PRODUCTION CUT OFF DATE? (YES/NO) NO.

ITEM	QUANTITY	DESCRIPTION
2	4	¾ Ton Diesel Pickup Dump Bed Insert w/Crane

PRICE EACH: \$ 42,534.⁰⁰

TOTAL: \$ 170,136

YEAR, MAKE & MODEL CAB & CHASSIS OFFERED:

2019 Ford F250 R1C 4x2

SPECIFIC MAKE & MODEL OF ENGINE OFFERED (INCLUDE SAE NET HP):

Ford 6.2 L V8 385 H.P

TRANSMISSION OFFERED:

Ford 6 speed Automatic

CAB & CHASSIS WARRANTY:

Basic 36,000 miles or 36 months

CAB & CHASSIS WARRANTY SERVICE PROVIDER FACILITY NAME:

Grande Truck Center

CAB & CHASSIS WARRANTY SERVICE PROVIDER FACILITY ADDRESS:

4562 FH-10 East

San Antonio, Texas 78219

YEAR, MAKE & MODEL DUMP BED INSERT AND CRANE OFFERED:

2018 Truck Craft TC-101

2018 Western Mule Model # A-1350

DUMP BED INSERT AND CRANE WARRANTY:

12 months

DUMP BED INSERT AND CRANE WARRANTY SERVICE PROVIDER FACILITY NAME:

Ayton Truck Equipment

DUMP BED INSERT AND CRANE WARRANTY SERVICE PROVIDER FACILITY ADDRESS:

4844 Whirlwind Dr.

San Antonio, TX 78217

DELIVERY WILL BE MADE WITHIN 150-210 CALENDER DAYS AFTER ISSUANCE OF PURCHASE ORDER.

PRODUCTION CUT-OFF DATE: 10/25/2018

INDICATE THE LAST DAY THAT THE CITY CAN PLACE ORDERS UNDER THIS CONTRACT WITHOUT MISSING THE PRODUCTION CUT OFF DATE: 10/25/2018.

BID PRICES SHALL REMAIN FIRM FOR ALL ORDERS PLACED PRIOR TO THIS CUT OFF DATE. IN THE EVENT THAT CITY DOES NOT AWARD A CONTRACT PRIOR TO PRODUCTION CUT OFF DATE, CAN BIDDER PROVIDE BID ITEMS, AT THE BID PRICE SUBMITTED, AFTER THE PRODUCTION CUT OFF DATE? (YES/NO) NO.

ITEM	QUANTITY	DESCRIPTION
3	1	¾ Ton Crew Cab Bi-Fuel Gasoline and CNG Truck

PRICE EACH: \$ 43,479.⁰⁰

TOTAL: \$ 43,479.⁰⁰

YEAR, MAKE & MODEL CAB & CHASSIS OFFERED:

2019 Ford F250 Crew Cab 4x2

SPECIFIC MAKE & MODEL OF ENGINE OFFERED (INCLUDE SAE NET HP):

Ford V-8 6-2L 385 HP.

TRANSMISSION OFFERED:

Ford 6 speed Automatic

CAB & CHASSIS WARRANTY:

BASIC 36 months or 36,000 miles

CAB & CHASSIS WARRANTY SERVICE PROVIDER FACILITY NAME:

Grande Truck Center

CAB & CHASSIS WARRANTY SERVICE PROVIDER FACILITY ADDRESS:

4562 IH-10 East
San Antonio, TX 78219

YEAR, MAKE & MODEL BI-FUEL GASOLINE AND COMPRESSED NATURAL GAS (CNG) SYSTEM OFFERED:

2019 NAT G QUM

BI-FUEL GASOLINE AND COMPRESSED NATURAL GAS (CNG) SYSTEM WARRANTY:

12 months

BI-FUEL GASOLINE AND COMPRESSED NATURAL GAS (CNG) SYSTEM WARRANTY SERVICE PROVIDER FACILITY NAME:

NAT G

BI-FUEL GASOLINE AND COMPRESSED NATURAL GAS (CNG) SYSTEM WARRANTY SERVICE PROVIDER FACILITY ADDRESS:

4562 IH-10 East
San Antonio, TX 78219

DELIVERY WILL BE MADE WITHIN 150-210 CALENDER DAYS AFTER ISSUANCE OF PURCHASE ORDER.

PRODUCTION CUT-OFF DATE: 10/25/2018

INDICATE THE LAST DAY THAT THE CITY CAN PLACE ORDERS UNDER THIS CONTRACT WITHOUT MISSING THE PRODUCTION CUT OFF DATE: 10/25/2018.

BID PRICES SHALL REMAIN FIRM FOR ALL ORDERS PLACED PRIOR TO THIS CUT OFF DATE. IN THE EVENT THAT CITY DOES NOT AWARD A CONTRACT PRIOR TO PRODUCTION CUT OFF DATE, CAN BIDDER PROVIDE BID ITEMS, AT THE BID PRICE SUBMITTED, AFTER THE PRODUCTION CUT OFF DATE? (YES/NO) NO

ITEM	QUANTITY	DESCRIPTION
4	1	52K OR > GVW CONVENTIONAL TRACTOR TRUCK

PRICE EACH: \$ 108,675.⁰⁰

TOTAL: \$ 108,675.⁰⁰

YEAR, MAKE & MODEL CAB & CHASSIS OFFERED:

2019 Western Star 4700

SPECIFIC MAKE & MODEL OF ENGINE OFFERED (INCLUDE SAE NET HP):

Detroit Diesel D413 12.8L 470 H.P.

TRANSMISSION OFFERED:

FRO-16210C 10 speed

WARRANTY:

12 months or 100,000 miles

WARRANTY SERVICE PROVIDER FACILITY NAME:

Grande Truck Center

WARRANTY SERVICE PROVIDER FACILITY ADDRESS:

4562 IH-10 East

San Antonio, TX 78219

DELIVERY WILL BE MADE WITHIN 210-230 CALENDER DAYS AFTER ISSUANCE OF PURCHASE ORDER.

PRODUCTION CUT-OFF DATE: 10/25/2018

INDICATE THE LAST DAY THAT THE CITY CAN PLACE ORDERS UNDER THIS CONTRACT WITHOUT MISSING THE PRODUCTION CUT OFF DATE: 10/25/2018

BID PRICES SHALL REMAIN FIRM FOR ALL ORDERS PLACED PRIOR TO THIS CUT OFF DATE. IN THE EVENT THAT CITY DOES NOT AWARD A CONTRACT PRIOR TO PRODUCTION CUT OFF DATE, CAN BIDDER PROVIDE BID ITEMS, AT THE BID PRICE SUBMITTED, AFTER THE PRODUCTION CUT OFF DATE? (YES/NO) NO

ITEM	QUANTITY	DESCRIPTION
5	4	Cab Over 84" CA, 4x2 DRW Service Body with 5,000 lbs. Crane & Lift Gate

PRICE EACH: \$ 10000

TOTAL: \$ _____

YEAR, MAKE & MODEL CAB & CHASSIS OFFERED:

SPECIFIC MAKE & MODEL OF ENGINE OFFERED (INCLUDE SAE NET HP):

TRANSMISSION OFFERED:

CAB & CHASSIS WARRANTY:

CAB & CHASSIS WARRANTY SERVICE PROVIDER FACILITY NAME:

CAB & CHASSIS WARRANTY SERVICE PROVIDER FACILITY ADDRESS:

YEAR, MAKE & MODEL UTILITY SERVICE BODY, CRANE AND LIFT GATE OFFERED:

SERVICE BODY, CRANE AND LIFT GATE WARRANTY:

SERVICE BODY, CRANE AND LIFT GATE WARRANTY SERVICE PROVIDER FACILITY NAME:

SERVICE BODY, CRANE AND LIFT GATE WARRANTY SERVICE PROVIDER FACILITY ADDRESS:

Veteran-Owned Small Business Program Tracking Form

Authority. San Antonio City Code Chapter 2, Article XI describes the City's veteran-owned small business preference program.

Tracking. This solicitation is not eligible for a preference based on status as a veteran-owned small business (VOSB). Nevertheless, in order to determine whether the program can be expanded at a later date, the City tracks VOSB participation at both prime contract and subcontract levels.

Certification. The City relies on inclusion in the database of veteran-owned small businesses (VOSB) maintained by the U.S. Small Business Administration to verify VOSB status; however, veteran status may also be confirmed by certification by another public or private entity that uses similar certification procedures.

Definitions.

The program uses the federal definitions of veteran and veteran-owned small business found in 38 CFR Part 74.

- The term "veteran" means a person who served on active duty with the U.S. Army, Air Force, Navy, Marine Corps, Coast Guard, for any length of time and at any place and who was discharged or released under conditions other than dishonorable. Reservists or members of the National Guard called to federal active duty or disabled from a disease or injury incurred or aggravated in line of duty or while in training status.
- A veteran-owned small business is a business that is not less than 51 percent owned by one or more veterans, or in the case of any publicly owned business, not less than 51 percent of the stock of which is owned by one or more veterans; the management and daily business operations of which are controlled by one or more veterans and qualifies as "small" for Federal business size stand purposes.

The program uses the below definition of joint venture.

- Joint Venture means a collaboration of for-profit business entities, in response to a solicitation, which is manifested by a written agreement, between two or more independently owned and controlled business firms to form a third business entity solely for purposes of undertaking distinct roles and responsibilities in the completion of a given contract. Under this business arrangement, each joint venture partner shares in the management of the joint venture and also shares in the profits or losses of the joint venture enterprise commensurately with its contribution to the venture.

The program does not distinguish between a veteran and a service-disabled veteran-owned business and is not limited geographically.

COMPLETE THE FOLLOWING FORM AND SUBMIT WITH YOUR BID/PROPOSAL.

INSTRUCTIONS

- IF SUBMITTING AS A PRIME CONTRACTOR ONLY, COMPLETE SECTION 1 OF THIS FORM.
- IF SUBMITTING AS A PRIME CONTRACTOR UTILIZING A SUBCONTRACTOR, COMPLETE SECTIONS 1 AND 2 OF THIS FORM.

**City of San Antonio
Veteran-Owned Small Business Program Tracking Form**

SOLICITATION NAME/NUMBER: 6100010298

Name of Respondent:	Grande Truck Center	
Physical Address:	4562 IH-10 East	
City, State, Zip Code:	SAN Antonio, TX 78219	
Phone Number:	210-664-7112	
Email Address:	rshoffstall@grandetruck.com	
Is Respondent certified as a VOSB with the U.S. Small Business Administration? (circle one)	Yes	<input checked="" type="radio"/> No
If yes, provide the SBA Certification #		
If not certified by the SBA, is Respondent certified as a VOSB by another public or private entity that uses similar certification procedures? (circle one)	Yes	<input checked="" type="radio"/> No
If yes, provide the name of the entity who has certified Respondent as a VOSB. Include any identifying certification numbers.		
Participation Percentage:		
Participation Dollar Amount:		

Is Respondent subcontracting with a business that is certified as a VOSB? (circle one)	Yes	<input checked="" type="radio"/> No
Name of SUBCONTRACTOR Veteran-Owned Small Business:		
Physical Address:		
City, State, Zip Code:		
Phone Number:		
Email Address:		
Is SUBCONTRACTOR certified as a VOSB with the U.S. Small Business Administration? (circle one)	Yes	<input checked="" type="radio"/> No
If yes, provide the SBA Certification #		
If not certified by the SBA, is SUBCONTRACTOR certified as a VOSB by another public or private entity that uses similar certification procedures? (circle one)	Yes	<input checked="" type="radio"/> No
If yes, provide the name of the entity who has certified SUBCONTRACTOR as a VOSB. Include any identifying certification numbers.		
Participation Percentage:		
Participation Dollar Amount		

City of San Antonio
Veteran-Owned Small Business Program Tracking Form

ACKNOWLEDGEMENT

THE STATE OF TEXAS

I certify that my responses and the information provided on this Veteran-Owned Small Business Preference Program Identification Form are true and correct to the best of my personal knowledge and belief and that I have made no willful misrepresentations on this form, nor have I withheld any relevant information in my statements and answers to questions. I am aware that any information given by me on this Veteran-Owned Small Business Preference Program Identification Form may be investigated and I hereby give my full permission for any such investigation, including the inspection of business records and site visits by City or its authorized representative. I fully acknowledge that any misrepresentations or omissions in my responses and information may cause my offer to be rejected or contract to be terminated. I further acknowledge that providing false information is grounds for debarment.

BIDDER/RESPONDENT'S FULL NAME:

Keith Shoffstall
(Print Name) Authorized Representative of Bidder/Respondent

Keith Shoffstall
(Signature) Authorized Representative of Bidder/Respondent

Sales
Title

5/21/2018
Date

This Veteran-Owned Small Business Program Tracking Form must be submitted with the Bidder/Respondent's bid/proposal.

City of San Antonio
Finance Department - Purchasing Division
Local Preference Program Identification Form

The City of San Antonio Local Preference Program, described in the San Antonio City Code Chapter 2, Article XII, establishes a local preference for specific contracting categories. Each time a bidder or respondent submits a bid for a solicitation, this Local Preference Program Identification Form must be completed and turned in with the solicitation response in order to be identified as a City Business and receive the preference described below. The City will not rely on Local Preference Program Identification Forms submitted with prior or contemporaneous bids or proposals.

The Local Preference Program allows the City to grant a preference to a business meeting the definition of *City Business* in the award of the following types of contracts, when selection is made based on price alone:

- **Personal Property (Goods / Supplies):** The local bidder's price must be within 3% of the price of the lowest non-local bidder for contracts of \$50,000 or more;
- **Non-professional Services:** The local bidder's price must be within 3% of the price of the lowest non-local bidder for contracts of \$50,000 to under \$500,000;
- **Construction Services:** The local bidder's price must be within 3% of the price of the lowest non-local bidder for contracts of \$50,000 to under \$100,000, excluding contracts awarded using alternative delivery methods.

The Local Preference Program also allows the award of additional points, when multiple evaluation criteria are used in the award of professional service contracts, where the selection process is not governed by statute and in revenue generating and concession contracts. A business meeting the definition of *City Business* stated below may be awarded 10 points for being headquartered within the city, or 5 points for having a local office within the city.

Moreover, the program recognizes joint venture agreements and allows for apportioning of points based upon the percentage of ownership of joint ventures by *City Businesses* responding to solicitations for which discretionary points are applied. For solicitations where selection is made based on price alone, all members of a joint venture must be *City Businesses* for the preference to be applied.

City Business is defined as a business headquartered within the incorporated San Antonio city limits for one year or more OR one that meets the following conditions:

- Has an established place of business for one year or more in the incorporated limits of the City:
 - (a) from which at least 100 of its employees OR at least 20% of its total full-time, part-time and contract employees are regularly based; and
 - (b) from which a substantial role in the business' performance of a commercially useful function or a substantial part of its operations is conducted by those employees.

A location utilized solely as a post office box, mail drop or telephone message center or any similar combination, with no other substantial work function, is not a *City Business*.

For the purposes of this program, Headquartered is defined as the place where a business entity's officers direct, control, and coordinate the entity's activities.

NOTE: Bidders / Respondents are required to submit documentation to substantiate that the requirements of a *City Business* have been met. Examples of documentation may include, but are not limited to the following:

1. Existence of local headquarters or office: For corporations, Texas Comptroller's listing of names/addresses of officers and directors. For partnerships, partnership agreement and any documents identifying the current managing partners and their current work addresses
2. Evidence of local headquarters or office in existence for one year or more: Utility bills, real property lease agreements, equipment leases, personal property taxes, real property taxes
3. Evidence of number of employees: Organizational charts, payroll records by location

City of San Antonio
Finance Department - Purchasing Division
Local Preference Program Identification Form

CITY RESERVES THE RIGHT TO REQUEST ADDITIONAL INFORMATION TO VALIDATE BIDDERS'/RESPONDENTS' DESIGNATION AS A CITY BUSINESS.

COMPLETE THE FOLLOWING FORM AND SUBMIT WITH YOUR RESPONSE EVEN IF YOU ARE NOT SEEKING A LOCAL PREFERENCE. THE BIDDER / RESPONDENT MUST COMPLETE THE FOLLOWING FORM TO BE IDENTIFIED AS A CITY BUSINESS. IF BIDDER / RESPONDENT IS SUBMITTING AS A JOINT VENTURE, EACH CITY BUSINESS THAT IS A MEMBER OF THE JOINT VENTURE MUST COMPLETE AND SIGN THIS FORM.

PROVIDE THE FOLLOWING INFORMATION IF BIDDER/ RESPONDENT IS SUBMITTING AS PART OF A JOINT VENTURE. Joint Venture means a collaboration of for-profit business entities, in response to a solicitation, which is manifested by a written agreement, between two or more independently owned and controlled business firms to form a third business entity solely for purposes of undertaking distinct roles and responsibilities in the completion of a given contract. Under this business arrangement, each joint venture partner shares in the management of the joint venture and also shares in the profits or losses of the joint venture enterprise commensurately with its contribution to the venture.

STATE BIDDER'S / RESPONDENT'S PERCENTAGE OF OWNERSHIP IN THE JOINT VENTURE: 100 %

SUBMIT A COPY OF THE JOINT VENTURE AGREEMENT. SUBMIT ANY OTHER DOCUMENTATION REQUESTED BY CITY TO SUBSTANTIATE THE EXISTANCE OF AND/OR PARTICIPATION IN THE JOINT VENTURE. NO PREFERENCE POINTS WILL BE ALLOCATED TO A JOINT VENTURE THAT FAILS TO SUBMIT REQUIRED DOCUMENTATION.

SOLICITATION NAME/NUMBER: 6100010298

PROVIDE THE FOLLOWING INFORMATION REGARDING BIDDER'S / RESPONDENT'S HEADQUARTERS:

Name of Business:	Grande Truck Center	
Physical Address:	4562 Ithio East	
City, State, Zip Code:	SAN ANTONIO, TEXAS	
Phone Number:	210-666-7112	
Email Address:	rshoffstall@grandetruck.com	
Provide the total number of full-time, part-time, and contract personnel employed by Bidder / Respondent:	<u>216</u>	
Is Business headquartered within the incorporated San Antonio city limits? (circle one)	<input checked="" type="radio"/> Yes	No
Has the business been headquartered in the incorporated San Antonio city limits for one year or more? (circle one)	<input checked="" type="radio"/> Yes	No
If the answers to the questions above are "Yes", stop here. If the answer to either of the above questions is "No", provide responses to the following questions:		

City of San Antonio
Finance Department - Purchasing Division
Local Preference Program Identification Form

PROVIDE THE FOLLOWING INFORMATION REGARDING BIDDER'S / RESPONDENT'S LOCAL OFFICE (IF APPLICABLE):

Name of Business:		
Physical Address:		
City, State, Zip Code:		
Phone Number:		
Email Address:		
Provide the total number of full-time, part-time, and contract personnel employed by Bidder / Respondent in the local office: _____		
Is the business located in the incorporated San Antonio city limits? (circle one)	Yes	No
Has the business been located in the incorporated San Antonio city limits for one year or more? (circle one)	Yes	No
Are at least 100 full-time, part-time or contract employees regularly based in the San Antonio office? (circle one)	Yes	No
Are at least 20% of the business' total full-time, part-time or contract employees regularly based in the San Antonio office? (circle one)	Yes	No
Do the employees in the San Antonio office perform a substantial role in the business' performance of a commercially useful function or are a substantial part of the business' operations conducted in the San Antonio office? (circle one)	Yes	No

City of San Antonio
Finance Department - Purchasing Division
Local Preference Program Identification Form

ACKNOWLEDGEMENT

THE STATE OF TEXAS

I certify that my responses and the information provided on this Local Preference Program Identification Form are true and correct to the best of my personal knowledge and belief and that I have made no willful misrepresentations on this form, nor have I withheld any relevant information in my statements and answers to questions. I am aware that any information given by me on this Local Preference Program Identification Form may be investigated and I hereby give my full permission for any such investigation, including the inspection of business records and site visits by City or its authorized representative. I fully acknowledge that any misrepresentations or omissions in my responses and information may cause my offer to be rejected or contract to be terminated. I further acknowledge that providing false information is grounds for debarment.

BIDDER'S / RESPONDENT'S FULL NAME:

Keith Shoffstall

(Print Name) Authorized Representative of Bidder / Respondent

Keith Shoffstall

(Signature) Authorized Representative of Bidder / Respondent

Sales

Title

5/21/2018

Date

**This Local Preference Identification Form must be submitted with the bidder's /
respondent's bid/proposal response.**



City of San Antonio

ADVERTISEMENT INFORMATION ONLY

Solicitation Type and Name: **Formal Invitation for Bid (IFB)**

PURCHASE OF LIGHT & MEDIUM DUTY TRUCKS

Solicitation Number: **6100010298**

SCOPE: The City of San Antonio is soliciting bids to provide ten replacement vehicles and one new vehicle to be added to the City Fleet in accordance with the Building and Equipment Services Department specifications listed within the bid document. These vehicles will be used for parks maintenance, Dead Animal Collection, street pavement support, Nelson Gardens brush collection efforts, and mechanic off road support.

- 1 - ¾ Ton Single Cab Bi-Fuel Gasoline/Propane Truck
- 4 - ¾ Ton Single Cab Diesel Trucks with Dump Bed and Crane
- 1 - ¾ Ton Crew Cab Bi-Fuel Gasoline/CNG Truck
- 1 - >33,000 GVW General Purpose Fifth Wheel
- 4 - Class 6 Diesel 84" CC DRW 4x2 Service Body

Applicable Product Categories: 07202, 07204, 07205 and 07208

Date Issued: May 3, 2018

Bid Due Date & Time: May 18, 2018, 2:00 PM (CENTRAL TIME)

Staff Contact Person: LD McGarity, Procurement Specialist II, email: ld.mcgarity@sanantonio.gov

A Pre-Submittal conference will be held on MAY 9, 2018 at 10:00 AM Central Time at the CITY of SAN ANTONIO, FLEET TRAINING ROOM, 329 S. Frio St., San Antonio, TX 78207

To view this solicitation, go to <https://supplierservice.sanantonio.gov/iri/portal>. If you have not completed the City's SAeP Vendor Registration, you must do so in order to view the solicitation and submit a response.

TO REGISTER: You will need to complete the vendor registration by accessing the SAeP Vendor Registration at <http://www.sanantonio.gov/purchasing/SAePS.aspx>. Questions regarding registration may be submitted to the SAePS Hotline at: (210) 207-0118 or by email at: vendors@sanantonio.gov.

Note: After you have successfully registered, you will need to send an email to the staff contact person requesting to be added to the solicitation vendor distribution list.



City of San Antonio

ADDENDUM I

SUBJECT: Formal Invitation For Bid (IFB) 6100010298 PURCHASE OF LIGHT & MEDIUM DUTY TRUCKS scheduled to open Friday, May 18, 2018 date of issue May 3, 2018.

DATE: May 16, 2018

THE ABOVE MENTIONED INVITATION FOR BID (IFB) IS HEREBY AMENDED AS FOLLOWS:

- 1. THE BID OPENING IS HEREBY EXTENDED TO WEDNESDAY, MAY 23, 2018 2:00 P.M. CENTRAL TIME.**
- 2. IFB Document Section 004 – Specifications / Scope of Services:**

Changed to read:

- 4.2.3 DELIVERY - All deliveries are to be made inside the City limits of San Antonio. Vendor must deliver equipment to the following address:**

City of San Antonio,
Northeast Service Center,
10303 Tool Yard, Bldg. #2,
San Antonio, TX 78233
Attn: Acquisitions

Delivery to a non-specified location will result in non-acceptance of the equipment by the City. All deliveries must be pre-arranged with a minimum 24-hour notification, NO EXCEPTIONS. Vehicles will be accepted 8:00 A.M. to 3:00 P.M. CST. Vehicles with more than 500 miles accumulated on the odometer will not be accepted. Vehicles with GVWR Minimum 52,000 lbs with more than 1500 miles accumulated on the odometer will not be accepted. All vehicles are required to have a full tank(s) when delivered to City specified location.

Changed to read:

- 4.2.9 CONVENIENCE FEATURES:** Unit is to be equipped at the factory with air conditioning/heater/defroster, (Maximum capacity cooling system offered by manufacturer), full headliner minimum OEM AM/FM radio, power steering, power ABS brakes, power windows, power door locks, and manual tilt steering wheel. All units to be equipped with steering column mounted gear selector unless otherwise specified. Unit shall have a minimum two keyless remotes (fobs) and shall have a minimum of three (3) sets of keys unless vehicle utilizes keyless entry. If the vehicle utilizes keyless remotes (fobs) only three (3) are required.

Changed to read:

4.3	ITEM	QUANTITY	DESCRIPTION
	1	1	Propane Powered ¾ Ton Regular Cab Pickup Truck Long Bed

Changed to read:

4.3.1 ENGINE: Minimum 8 cylinders with a minimum 300 H.P.

Changed to read:

4.3.3 TRANSMISSION/ DRIVE: Automatic with overdrive; 6 speed minimum; Power Steering; 4x2.

Changed to read:

4.3.6 DIMENSIONS: Regular cab configuration with a minimum 95 inches cargo box.

Changed to read:

4.3.7 WHEELBASE: Wheelbase to be a minimum 130" inches.

Changed to read:

4.3.9 FUEL SYSTEM: Trucks shall be equipped with a Westport WING Power System or proven equal bi-fuel propane autogas system; with a minimum 19 gallon useable under bed tank package.

Added:

4.3.16 TOOLBOXES: Unit shall be equipped with three (3 qty) toolboxes. Both shall be bed mounted and weather resistant white/black/polished toolbox, aluminum preferred. Toolboxes must have toolbox shocks that do not interfere with closing of the lid. Toolbox must be lockable with a key.

4.3.16.1 TOOLBOX 1: The toolbox must be the entire width of the bed and flush mounted against the cab to allow easy access. The measurements shall be minimum 68"L 20"W x 18"H.

4.3.16.2 TOOLBOX 2: The toolbox shall be securely mounted on the driver side of the unit. The length of the unit shall be a minimum of 60" inches in length. The unit shall be a minimum 12" in width. The depth of the toolbox shall be the deepest available.

4.3.16.3 TOOLBOX 3: The toolbox shall be securely mounted on the passenger side of the unit. The length of the unit shall be a minimum of 60" inches in length. The unit shall be a minimum 12" in width. The depth of the toolbox shall be the deepest available.

4.3.17 Side Step: Truck shall have a driver and passenger side step.

4.3.18 TOW PACKAGE: OEM rear bumper and tow package to include receiver hitch with 2" hitch opening, OEM in-cab mounted trailer brake controller and both a 4-Way flat vehicle connector and 7-Way round vehicle connector (Flat Pin).

4.4	ITEM	QUANTITY	DESCRIPTION
	2	4	¾ Ton Diesel Pickup Dump Bed Insert w/Crane

Changed to read:

4.4.1 ENGINE: Minimum 6 cylinders with a minimum 340 H.P.

Changed to read:

4.4.3 TRANSMISSION/ DRIVE: Automatic with overdrive; 6 speed minimum; Power Steering; 4x2.

Changed to read:

4.4.6 DIMENSIONS: Regular cab configuration with a minimum 95 inches cargo box.

Changed to read:

4.4.7 WHEELBASE: Wheelbase to be a minimum 130" inches.

Number Correction:

4.4.15 WARRANTY: The conversion installation shall be warranted a minimum of 3 years or 36 thousand miles from date vehicle is placed into service.

4.4.16 Must show proof of upfit installation proposed models of equipment and applicable warranty locations.

4.4.17 Vehicles being replaced are #4166, #4054, #4402 and #419813. Left photo is rear of truck. Right photo depicts un-stowed crane.

4.5	ITEM	QUANTITY	DESCRIPTION
	3	1	¾ Ton Crew Cab Bi-Fuel Gasoline and CNG Truck

Changed to read:

4.5.3 TRANSMISSION/ DRIVE: Automatic with overdrive; 6 speed minimum; Power Steering; 4x2

Changed to read:

4.5.6 DIMENSIONS: Full Four Door cab configuration with a minimum 95 inches cargo box.

Changed to read:

4.5.7 WHEELBASE: Wheelbase to be a minimum 140" inches

4.7	ITEM	QUANTITY	DESCRIPTION
	5	4	Cab Over 84" CA, 4x2 DRW Service Body with

5,000 lbs. Crane & Lift Gate

Changed to read:

4.7.1 ENGINE: Minimum 210 HP engine.

Added:

4.7.37 Photos not available because this is a new design to be used for a mechanic truck. This truck is compatible for an Isuzu NPR, Hino 155, and Chevrolet 4500HD/XD; all other cab designs are accepted that are comparable.

Added:

4.8	ITEM	QUANTITY	DESCRIPTION
	6	1	¾ Ton Regular Cab Long Bed Pickup

4.8.1 ENGINE: 6 cylinders or greater with a minimum 300 HP.

4.8.2 GVWR: Minimum of 6,000 lbs.

4.8.3 TRANSMISSION/DRIVE: Automatic with overdrive; 5 speed minimum; Power Steering; 4x2 design.

4.8.4 SUSPENSION: Heaviest Duty available to include heavy duty shock absorbers and independent struts with stabilization.

4.8.5 DIMENSIONS: Regular cab configuration. Pick-up box length shall be a minimum of 95 inches. Wheelbase shall be a minimum 130 inches.

4.8.6 BRAKES: Equipped with 4-wheel automatic braking system and front vented discs at minimum.

4.8.7 TIRES & WHEELS: A tire pressure monitoring system is required. Tires must meet or exceed the minimum gross vehicle weight rating of vehicle.

4.8.9 FUEL SYSTEM: Fuel tank shall hold a minimum of 20 gallons of Unleaded 87 Octane.

4.8.10 SEATING: Vinyl seating and upholstery.

4.8.11 FLOOR: Vinyl flooring throughout and include rubber floor mats.

4.8.12 BUMPERS: Factory Style front bumper with step type rear bumper.

4.8.13 TOW PACKAGE: OEM rear bumper and tow package to include receiver hitch with 2" hitch opening, OEM in-cab mounted trailer brake controller and both a 4-Way flat vehicle connector and 7-Way round vehicle connector (Flat Pin).

4.8.14 TOOLBOXES: Unit shall be equipped with two (2 qty) toolboxes. Both shall be bed mounted and weather resistant white/black/polished toolbox, aluminum preferred. Toolboxes must have toolbox shocks that do not interfere with closing of the lid. Toolbox must be lockable with a key.

4.8.14.1 TOOLBOX 1: The toolbox must be the entire width of the bed and plush mounted against the cab to allow easy access. The measurements shall be minimum 68"L 20"W x 18"H.

4.8.14.2 TOOLBOX 2: The toolbox shall be securely mounted on the driver side of the unit. The length of the unit shall be a minimum of 60" inches in length. The unit shall be a minimum 12" in width. The depth of the toolbox shall be deepest available for truck offered.

4.8.15 This vehicle will replace truck #2653.

PRICE SCHEDULE
ITEM PRICING

Changed to read:

ITEM	QUANTITY	DESCRIPTION
1	1	Propane Powered 3/4 Ton Regular Cab Pickup Truck Long Bed

Added:

ITEM	QUANTITY	DESCRIPTION
6	1	3/4 Ton Regular Cab Long Bed Pickup

PRICE EACH: \$ see page 38 of 39

TOTAL: \$ _____

YEAR, MAKE & MODEL OFFERED:

SPECIFIC MAKE & MODEL OF ENGINE OFFERED (INCLUDE SAE NET HP):

TRANSMISSION OFFERED:

WARRANTY:

WARRANTY SERVICE PROVIDER FACILITY NAME:
