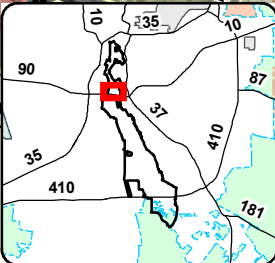
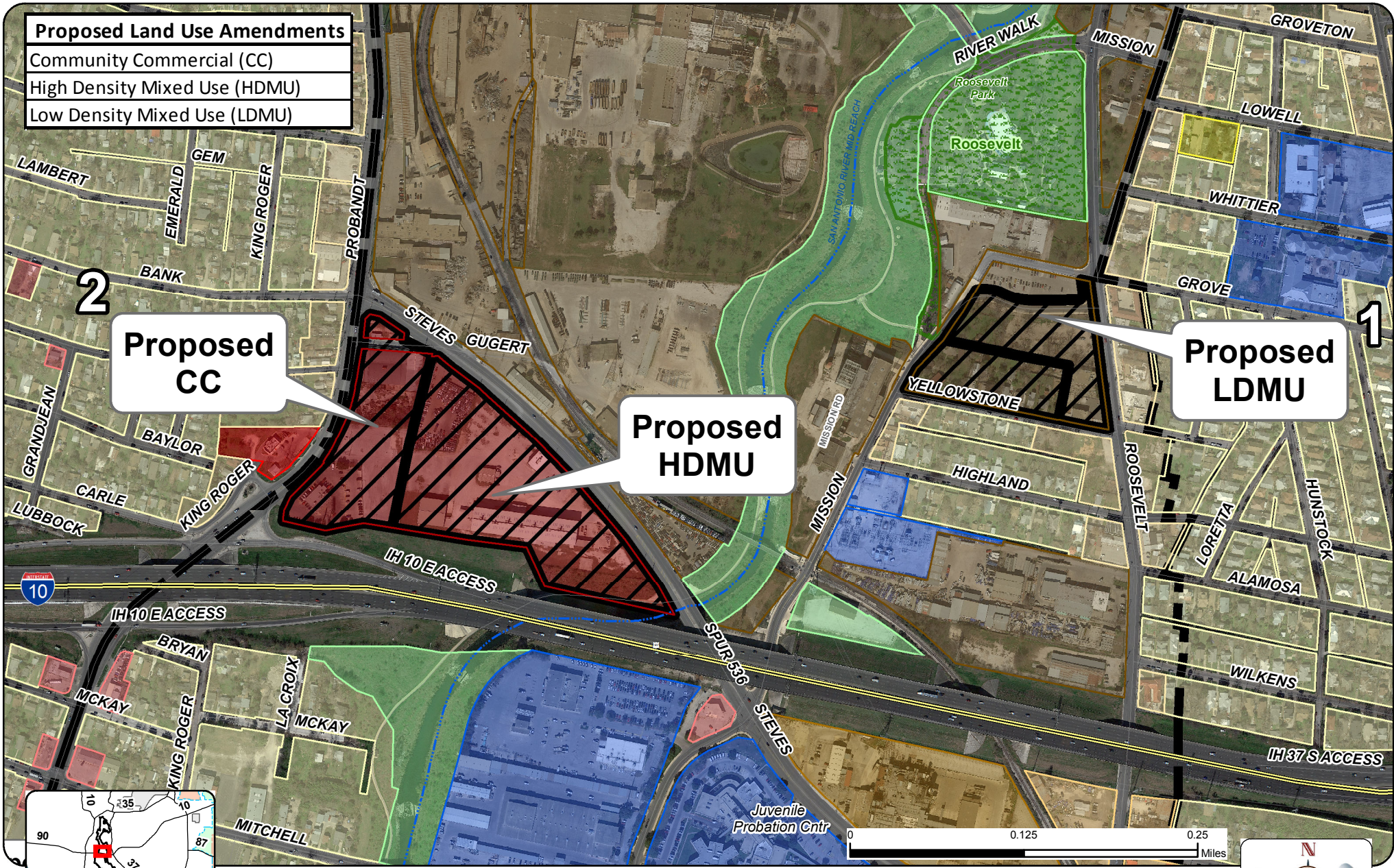


Proposed Land Use Amendments

- Community Commercial (CC)
- High Density Mixed Use (HDMU)
- Low Density Mixed Use (LDMU)



- | | | | | |
|----------------|------------------------------|----------------------------|-------------------------|-----------------------|
| Mission Espada | Park Boundaries | Low Density Residential | Low Density Mixed Use | Parks/Open Space |
| Expressways | World Heritage Boundary | Medium Density Residential | Mixed Use | Public/ Institutional |
| Creeks | Proposed Land Use Amendments | Business Park | High Density Mixed Use | Regional Commercial |
| | | Community Commercial | Neighborhood Commercial | |

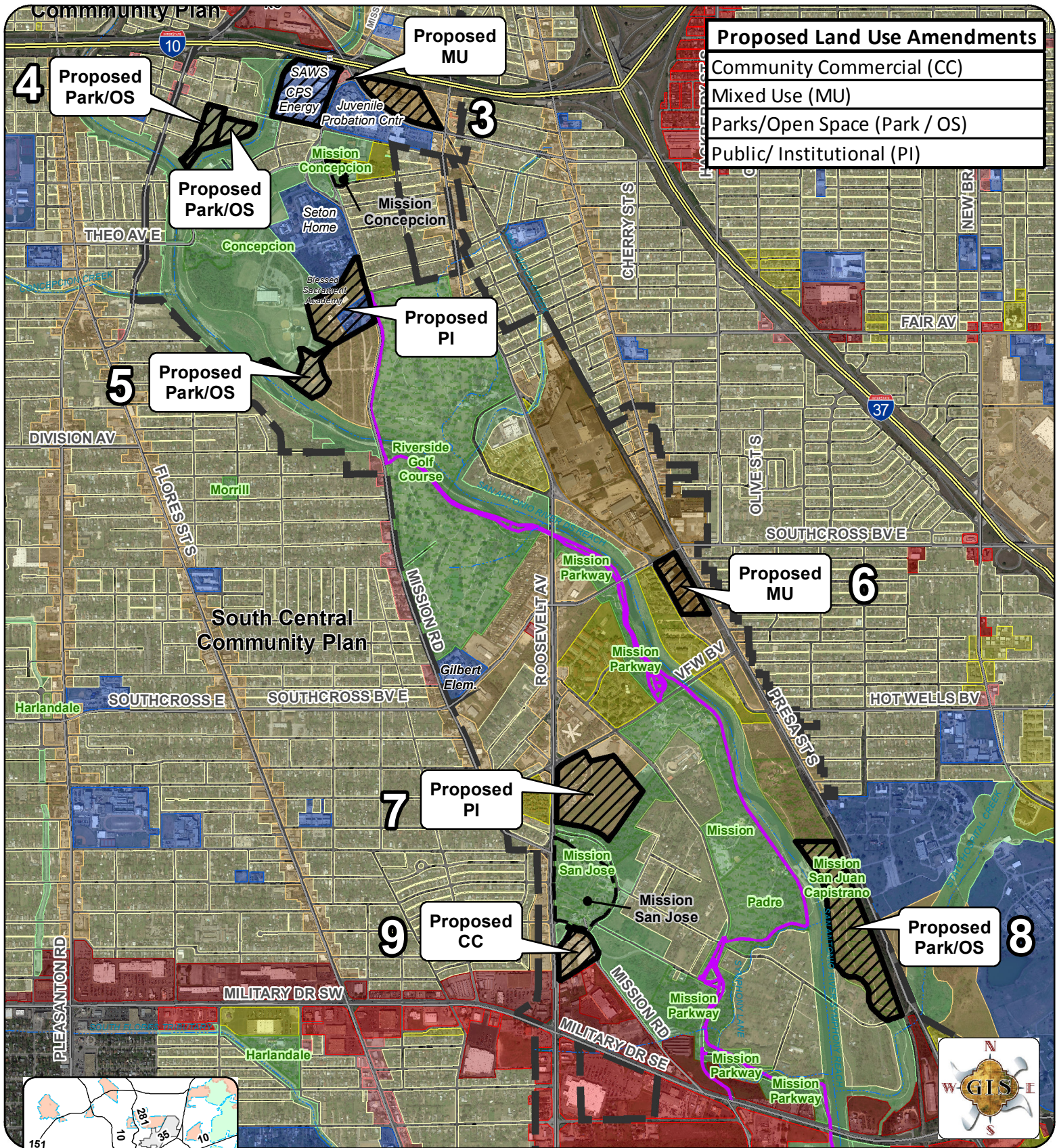


Data Source: City of San Antonio Enterprise GIS, Bexar Metro 911, Bexar Appraisal District
 This Geographic Information System Product, received from The City of San Antonio is provided "as is" without warranty of any kind, and the City of San Antonio expressly disclaims all express and implied warranties, including but not limited to the implied warranties of merchantability and fitness for a particular purpose. The City of San Antonio does not warrant, guarantee, or make any representation regarding the use, or the results of the use, of the information contained in this product. The City of San Antonio disclaims any responsibility for the use, or the results of the use, of the information contained in this product. The City of San Antonio disclaims any responsibility for the use, or the results of the use, of the information contained in this product. The City of San Antonio disclaims any responsibility for the use, or the results of the use, of the information contained in this product. The City of San Antonio disclaims any responsibility for the use, or the results of the use, of the information contained in this product.
 Please contact the responsible City of San Antonio Department for specific information.
 Maps may be ordered at: (210) 207-7933
 Date/Time Saved: 10/17/2016 at 2:43:07 PM
 PDF Filename: 16100513.pdf
 Map Path: W:\CoSADepts\And\Offices_FY2015_2016\PlanningAndCommunityDevelopment\World Heritage Area\IHLandUseChanges Landscape Aerial.mxd

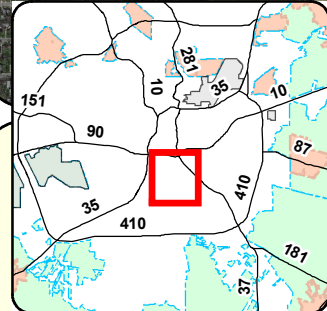
World Heritage Area Lone Star Land Use Plan Amendments

City of San Antonio
 Information Technology Services Department
 GIS Public Services Division
 RiverView Towers
 111 Soledad St., Suite 900
 San Antonio, TX 78205





Proposed Land Use Amendments	
[Color]	Community Commercial (CC)
[Color]	Mixed Use (MU)
[Color]	Parks/Open Space (Park / OS)
[Color]	Public/ Institutional (PI)



[Hatched Box]	Proposed Future Land Use	[Light Orange Box]	High Density Mixed Use	[Light Yellow Box]	Mixed Use	[Green Box]	Park Boundaries
[Cross-hatched Box]	World Heritage Buffer Area	[Yellow Box]	High Density Residential	[Pink Box]	Neighborhood Commercial	[Purple Line]	Trails
[Dotted Box]	San Antonio Missions	[Light Green Box]	Low Density Mixed Use	[Light Blue Box]	Parks/Open Space	[Blue Line]	Creeks
[Brown Box]	Business Park	[Light Yellow Box]	Low Density Residential	[Blue Box]	Public/ Institutional	[Thick Blue Line]	Expressways
[Red Box]	Community Commercial	[Yellow Box]	Medium Density Residential	[Red Box]	Regional Commercial	[Scale Bar]	0 0.125 0.25 Miles

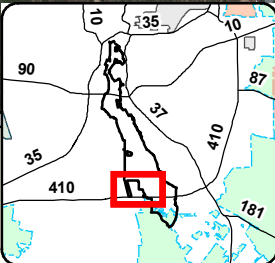
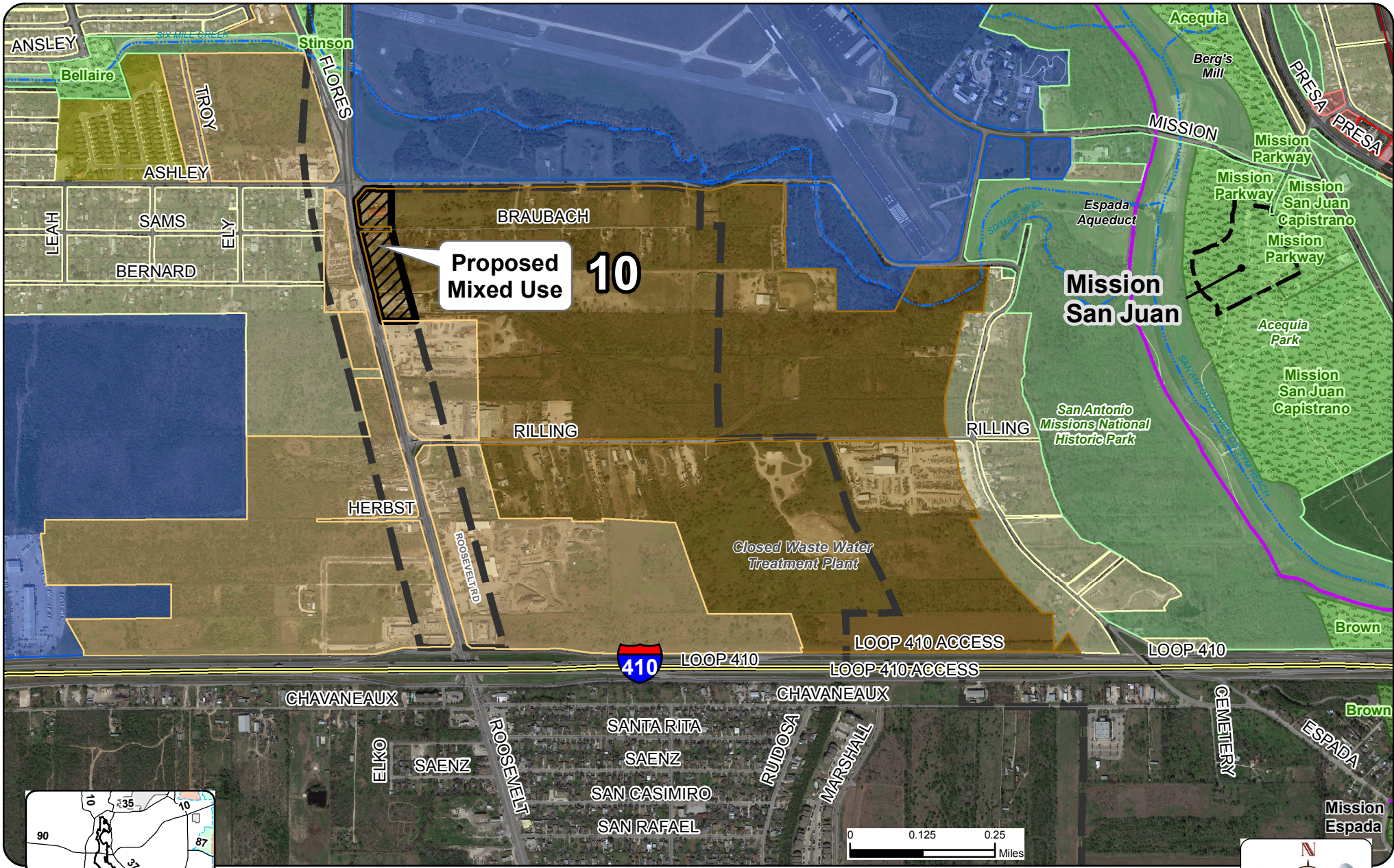
World Heritage Area South Central Land Use Plan Amendments

City of San Antonio
 Information Technology Services Department
 GIS Public Services Division
 Riverview Towers
 111 Soledad St., Suite 900
 San Antonio, TX 78205



Data Source: City of San Antonio Enterprise GIS, Bexar Metro 911, Bexar Appraisal District

 This Geographic Information System Product, received from the City of San Antonio is provided "as is" without warranty of any kind, and the City of San Antonio expressly disclaims all express and implied warranties, including but not limited to the implied warranties of merchantability and fitness for a particular purpose. The City of San Antonio does not warrant, guarantee, or make any representation regarding the use, or the results of the use of the information provided by this City of San Antonio, in terms of completeness, accuracy, reliability, timeliness or otherwise. The entire risk as to the results and performance of any information obtained from the City of San Antonio is entirely assumed by the recipient.
 *Users accept the responsibility of the City of San Antonio Department for specific determinations.
 Map may be altered at: (210) 207-7983
 Date/Time Saved: 10/4/2016 4:17:29 PM
 PDF Filename: 16102016.pdf
 Map Path: W:\GIS\AD\GIS\AD\Bexar_FY2016_2016\Planning\GIS\CommunityDevelopment\WorldHeritageArea\WHLandUseChanges.mxd



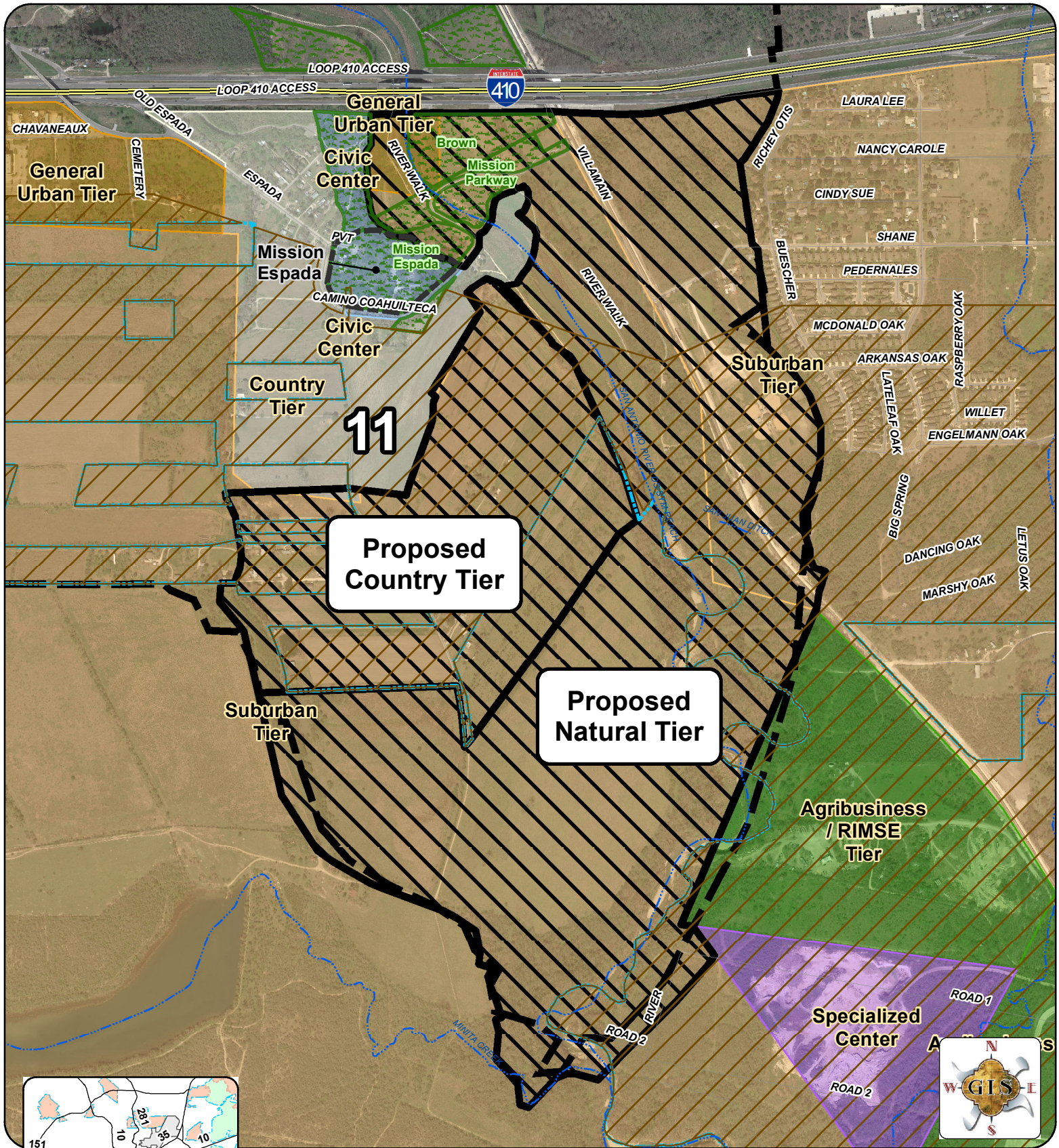
- | | | | | | | | |
|--|----------------------------|--|--------------------------|--|-------------------------|--|-----------------|
| | Proposed Future Land Use | | Low Density Residential | | Business Park | | Park Boundaries |
| | World Heritage Buffer Area | | High Density Residential | | Neighborhood Commercial | | Creeks |
| | San Antonio Missions | | Agricultural | | Parks/Open Space | | Trails |
| | Mixed Use | | Public/ Institutional | | Expressways | | |



Data Source: City of San Antonio Enterprise GIS, Bexar Metro 911, Bexar Appraisal District
 "This Geographic Information System Product, received from The City of San Antonio is provided "as is" without warranty of any kind, and the City of San Antonio expressly disclaims all express and implied warranties, including but not limited to the implied warranties of merchantability and fitness for a particular purpose. The City of San Antonio does not warrant, guarantee, or make any representation regarding the use, or the results thereof, of the information contained in this City of San Antonio in terms of completeness, accuracy, reliability, timeliness or otherwise. The user assumes the entire risk as to the results and performance of any information obtained from the City of San Antonio is solely assumed by the user."
 *Please contact the responsible City of San Antonio Department for specific determinations.
 Maps may be ordered at: (210) 207-7933
 Date/Time Saved: 10/17/2016 at 2:43:07 PM
 PDF Filename: 161005213.pdf
 Map Path: W:\CoSADepts\And\Offices_FY2015_2016\PlanningAndCommunityDevelopment\World Heritage Area\IHLandUseChanges Landscape Aerial.mxd

World Heritage Area Stinson Airport Vicinity Land Use Plan Amendments

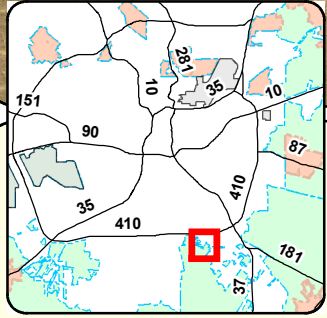
City of San Antonio
 Information Technology Services Department
 GIS Public Services Division
 RiverView Towers
 111 Soledad St., Suite 900
 San Antonio, TX 78205



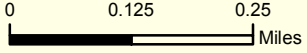
11

Proposed Country Tier

Proposed Natural Tier



- | | | | | | | | |
|--|------------------------------|--|--------------------|--|---------------------|--|-----------------|
| | Proposed Land Use Amendments | | Country Tier | | City of San Antonio | | Expressways |
| | World Heritage Boundary | | General Urban Tier | | Limited Annexation | | Park Boundaries |
| | Mission Espada | | Specialized Center | | Creeks | | |
| | Agribusiness / RIMSE Tier | | Suburban Tier | | | | |
| | Civic Center | | | | | | |



Data Source: City of San Antonio Enterprise GIS, Bexar Metro 911, Bexar Appraisal District
 This Geographic Information System Product, received from the City of San Antonio is provided "as is" without warranty of any kind, and the City of San Antonio expressly disclaims all express and implied warranties, including but not limited to the implied warranties of merchantability and fitness for a particular purpose. The City of San Antonio does not warrant, guarantee, or make any representations regarding the use, or the results of the use of the information provided by this City of San Antonio in terms of completeness, accuracy, reliability, timeliness or otherwise. The entire risk as to the results and performance of any information obtained from the City of San Antonio is entirely assumed by the recipient.
 *Please contact the responsible City of San Antonio Department for specific departmental information.
 Map may be altered at: (210) 207-7983
 Date/Time Saved: 10/17/2016 at 4:21:04 PM
 PDF Filename: 16100G18.pdf
 Map Path: W:\GIS\AD\MapDocs\Bexar_FY2016_2016\Planning\GIS\CommunityDevelopment\World Heritage Area\WHLandUseChanges Aerial.mxd

World Heritage Area Land Use Amendments Heritage South Sector Plan

City of San Antonio
 Information Technology Services Department
 GIS Public Services Division
 Riverview Towers
 111 Soledad St., Suite 900
 San Antonio, TX 78205

