

NOTES

BEARINGS ARE BASED ON NORTH AMERICAN DATUM OF 1983 (89) - TEXAS STATE PLANE COORDINATE SYSTEM, SOUTH CENTRAL ZONE.

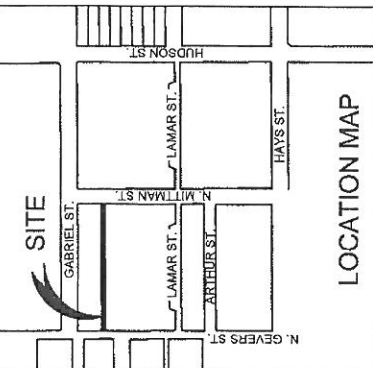
LEGEND

- FIR FOUND 1/2" IRON ROD (UNLESS OTHERWISE NOTED)
- POINT
- R.O.W. RIGHT-OF-WAY
- SQ.FT. SQUARE FEET
- D.R. DEED RECORD OF BEXAR COUNTY, TEXAS
- D.P.R. DEED AND PLAT RECORDS OF BEXAR COUNTY, TEXAS
- O.P.R. OFFICIAL PUBLIC RECORD OF REAL PROPERTY OF BEXAR COUNTY, TEXAS
- N.T.S. NOT TO SCALE
- VOL. VOLUME
- PG. PAGE
- N.C.B. NEW CITY BLOCK

WHEATLEY COURTS
 PROJECT NO. TEX-6-4
 HOUSING AUTHORITY OF THE CITY OF
 SAN ANTONIO
 VOL. 1857, PG. 173, D.R.

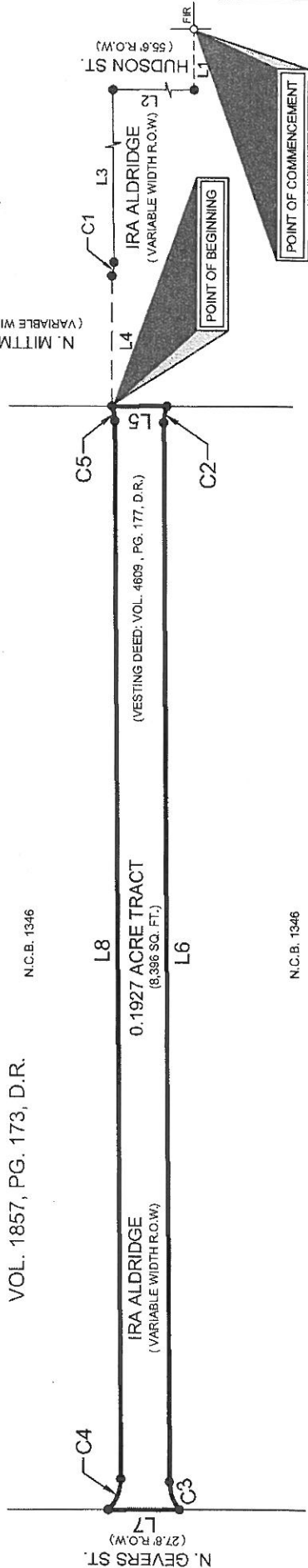
N.C.B. 1346

N.C.B. 1346



CURVE TABLE						
CURVE	LENGTH	RADIUS	DELTA	TANGENT	CHORD BEARING	CHORD LENGTH
C1	5.43'	17.40'	17°53'14"	2.74'	N81°26'33"W	5.41'
C2	6.49'	17.40'	21°21'36"	3.28'	N79°42'22"W	6.46'
C3	11.85'	17.40'	39°01'49"	6.17'	S70°05'55"W	11.63'
C4	13.42'	17.40'	44°10'42"	7.06'	S68°17'47"E	13.09'
C5	5.85'	17.40'	19°17'32"	2.96'	N79°58'04"E	5.83'

LINE TABLE		
LINE	BEARING	LENGTH
L1	S89°39'43"W	55.60'
L2	N00°20'17"W	74.42'
L3	S89°35'50"W	428.97'
L4	S89°45'56"W	51.42'
L5	S00°14'38"E	21.37'
L6	S89°36'50"W	418.07'
L7	N00°20'17"W	28.00'
L8	N89°36'50"E	417.52'



I HEREBY CERTIFY THAT THIS MAP IS CORRECT AND BASED ON AN ACTUAL SURVEY PERFORMED ON THE GROUND AND UNDER MY SUPERVISION.

ROBERT M. ANGUIANO
 REGISTERED PROFESSIONAL LAND SURVEYOR
 TEXAS REGISTRATION NO. 6347
 VICKREY & ASSOCIATES, INC.

DATED 04-03-14

[Signature]

SHEET 3 OF 3

VICKREY & ASSOCIATES, INC.
 CONSULTING ENGINEERS
 CIVIL • ENVIRONMENTAL • SURVEY
 12940 Country Parkway San Antonio, TX 78216
 Telephone: (210) 349-3271
 TBPLS Firm Registration No.: 10004100