

THIS IS A DRAFT AND WILL BE REPLACED BY THE FINAL, SIGNED ORDINANCE OR RESOLUTION ADOPTED BY CITY COUNCIL.

AN ORDINANCE

AMENDING THE CITY OF SAN ANTONIO MAJOR THOROUGHFARE PLAN, A COMPONENT OF THE CITY OF SAN ANTONIO MASTER PLAN, BY RE-ALIGNING AND RE-DESIGNATING A PROPOSED SEGMENT OF THE EAST & WEST CONNECTOR FROM AN ENHANCED SECONDARY ARTERIAL (120' TO 142' OF RIGHT-OF-WAY) TO A SECONDARY ARTERIAL TYPE A (86' OF RIGHT-OF-WAY) GENERALLY LOCATED IN SOUTHERN BEXAR COUNTY, BETWEEN ROOSEVELT AVENUE AND THE SAN ANTONIO RIVER.

* * * * *

WHEREAS, the City of San Antonio Major Thoroughfare Plan was adopted on September 21, 1978 by City Council as a component of the City of San Antonio Master Plan; and

WHEREAS, a public hearing was held on September 25, 2019 by the Planning Commission allowing all interested citizens to be heard: **NOW THEREFORE;**

BE IT ORDAINED BY THE CITY COUNCIL OF THE CITY OF SAN ANTONIO:

SECTION 1: The Major Thoroughfare Plan, a component of the Master Plan of the City, is amended to:

1. Realign and redesignate a proposed segment of the East & West Connector from an Enhanced Secondary Arterial (120' to 142' of right-of-way) to a Secondary Arterial Type A (86' of right-of-way) generally located in southern Bexar County, between Roosevelt Avenue and the San Antonio River

The Amendment is more particularly described in **Attachment "A,"** attached hereto and incorporated herein for all purposes.

SECTION 2: This ordinance shall become effective _____ 2019.

PASSED AND APPROVED this ___ day of _____, 2019.

M A Y O R
Ron Nirenberg

ATTEST:

APPROVED AS TO FORM:

SG/cia
Mm/dd/yyyy
#

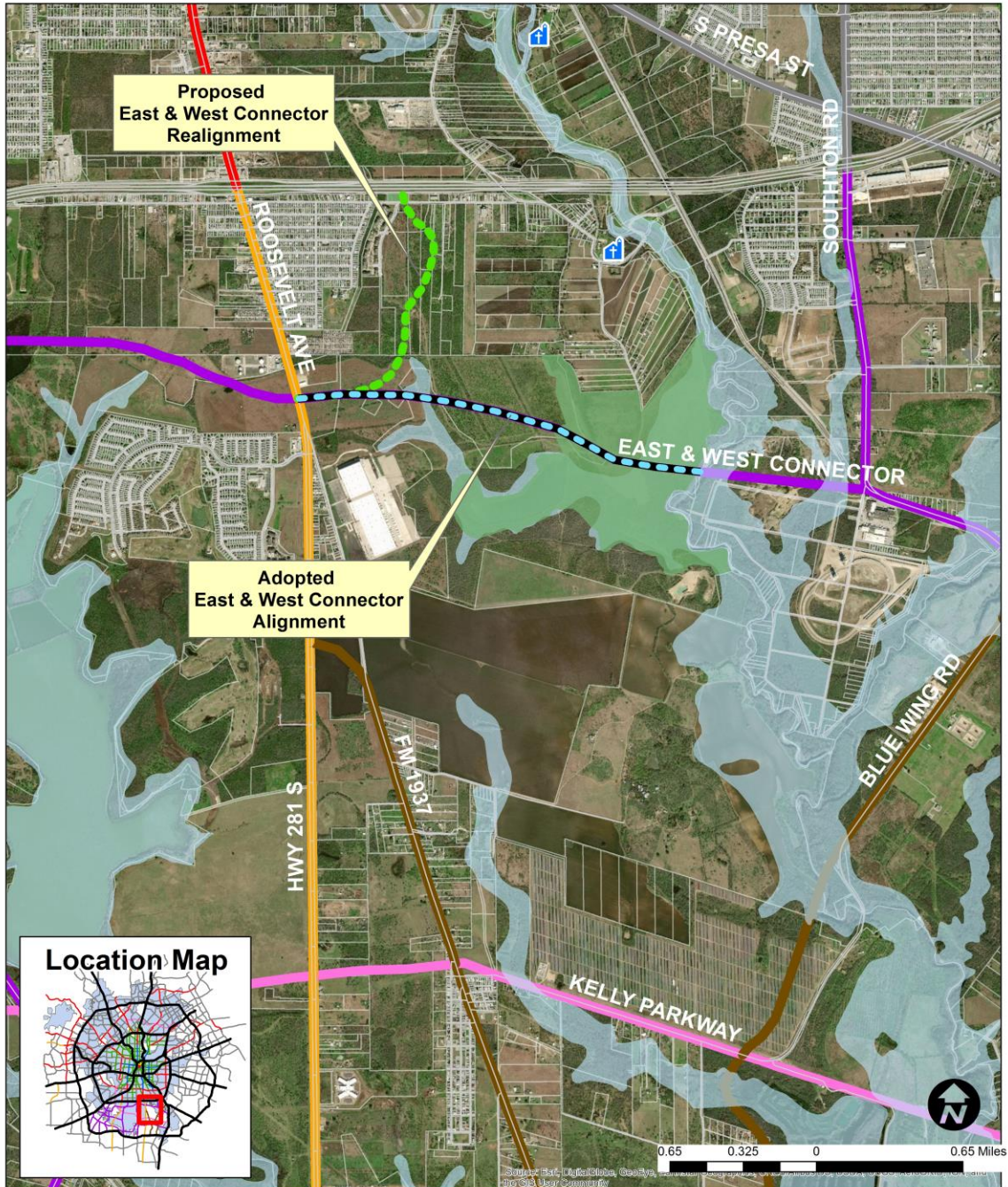
Major Thoroughfare Plan Amendment

Leticia M. Vacek, City Clerk

City Attorney

DRAFT

MAJOR THOROUGHFARE PLAN (MTP) AMENDMENT TO EAST & WEST CONNECTOR ATTACHMENT A



AMENDMENT ADOPTED MTP

- | | | | |
|--|--|--|-----------------------------|
| | Missions | | Enhanced Secondary Arterial |
| | Adopted East & West Alignment | | Primary Arterial Type A |
| | Proposed East & West Connector Realignment | | Rural Roadway |
| | Open Space Preservation | | Secondary Arterial Type A |
| | 100-Year Floodplain | | Super Arterial Type A |
| | | | Super Arterial Type B |