

AN ORDINANCE 2015-11-19-0956

**AUTHORIZING ADJUSTMENTS TO THE WATER DELIVERY, WATER SUPPLY FEE, AND WASTEWATER RATE STRUCTURES FOR THE SAN ANTONIO WATER SYSTEM'S RESIDENTIAL, GENERAL, IRRIGATION, AND WHOLESALE CLASS CUSTOMERS EFFECTIVE ON JANUARY 1, 2016; AMENDING AND RECODIFYING IN PART CHAPTER 34 OF THE CITY CODE OF THE CITY OF SAN ANTONIO TO REVISE THE SAN ANTONIO WATER SYSTEM'S RATE STRUCTURES INCORPORATED THEREIN; APPROVING ADJUSTMENTS TO ALL WATER DELIVERY, WATER SUPPLY FEE, WASTEWATER, AND RECYCLED WATER RATES TO SUPPORT THE SAN ANTONIO WATER SYSTEM'S 2016 ANNUAL BUDGET EFFECTIVE ON JANUARY 1, 2016; AUTHORIZING RATE CAPS TO THE WATER DELIVERY, WATER SUPPLY FEE, WASTEWATER, AND RECYCLED WATER RATES TO SUPPORT THE SAN ANTONIO WATER SYSTEM'S PROJECTED REVENUE REQUIREMENTS FOR 2017 EFFECTIVE ON JANUARY 1, 2017; ADOPTING RATE CAP ADJUSTMENTS TO THE WATER DELIVERY, WATER SUPPLY FEE, WASTEWATER, AND RECYCLED WATER RATES EFFECTIVE JANUARY 1, 2017; AUTHORIZING RATE CAPS TO WATER SUPPLY FEE RATES TO SUPPORT THE SAN ANTONIO WATER SYSTEM'S PROJECTED WATER SUPPLY REVENUE REQUIREMENTS FOR 2018, 2019 AND 2020, RESPECTIVELY; ADOPTING RATE CAP ADJUSTMENTS TO THE WATER SUPPLY FEE RATES EFFECTIVE ON JANUARY 1, 2018, JANUARY 1, 2019, AND JANUARY 1, 2020, RESPECTIVELY; AUTHORIZING THAT ALL RATE CAP ADJUSTMENTS FOR 2017 THROUGH 2020 ARE SUBJECT TO REVIEW BY THE PUBLIC UTILITIES OFFICE; ADOPTING THE WATER RATE CLASS FOR FORMER BEXAR METROPOLITAN WATER DISTRICT SERVICE AREA CUSTOMERS NOTWITHSTANDING THE DISSOLUTION OF THE DISTRICT SPECIAL PROJECT; AUTHORIZING THAT THE RATES IN THE WATER RATE CLASS FOR FORMER BEXAR METROPOLITAN WATER DISTRICT SERVICE AREA CUSTOMERS NOT BE CHANGED FROM THOSE CURRENTLY BEING ASSESSED BY THE DISTRICT SPECIAL PROJECT UNTIL FULL RATE INTEGRATION WITH SAN ANTONIO WATER SYSTEM RATES OCCURS AS REQUIRED BY LAW; AUTHORIZING THE IMPLEMENTATION OF ADJUSTMENTS TO VARIOUS SPECIAL SERVICES FEES AND AMENDMENTS EFFECTIVE ON OR ABOUT JANUARY 1, 2016 AND TO AUTOMATICALLY INCREASE AT THE ANNUAL RATE OF INFLATION EACH YEAR AFTER 2016; ADOPTING CERTAIN RATE-RELATED AMENDMENTS TO CHAPTER 34 OF THE CITY CODE OF THE CITY OF SAN ANTONIO TO REVISE THE SAN ANTONIO WATER SYSTEM'S RATE AND FEE SCHEDULES INCORPORATED THEREIN, INCLUDING PROVISIONS FOR CERTAIN OF THE SPECIAL SERVICES FEES TO AUTOMATICALLY INCREASE AT THE ANNUAL RATE OF INFLATION EACH YEAR AFTER 2016.**

\* \* \* \* \*

**WHEREAS**, pursuant to Ordinance No. 75686 approved by the City Council on April 30, 1992, the City Council approved the creation of the San Antonio Water System (SAWS), a single unified system consisting of the City of San Antonio's existing waterworks, wastewater and water re-use systems, together with all future improvements and additions thereto and replacements; and

**WHEREAS**, consistent with its practice of reviewing water and wastewater rates structures on a periodic basis, the SAWS Board appointed a citizens' Rates Advisory Committee to conduct a comprehensive cost of service and rate design study in 2014 and 2015; and

**WHEREAS**, the Rate Advisory Committee was tasked with reviewing the current structure and deliberating on how to best fund the needs of the city's water utility; and

**WHEREAS**, the Rates Advisory Committee, with the assistance of Black & Veatch, a nationally-recognized rate consultant, prepared a report in May 2015 summarizing the results of the cost of service and rate design study and unanimously agreed upon the recommendation to create a rate structure that will ensure fairness among customer categories (residential, commercial, irrigation, etc.), while also allowing SAWS to fully recover its costs; and

**WHEREAS**, on October 27, 2015, the SAWS Board of Trustees approved a resolution proposing changes to rate structure, based on the recommendations from the Rate Advisory Committee and SAWS Staff for City Council consideration and adoption, and

**WHEREAS**, the SAWS Board of Trustees approved the following rate structure recommendations for City Council consideration and approval:

- **WATER CHARGES:**

1. Develop a Residential Lifeline Supply rate block, and
2. Expand the number of Residential volumetric blocks from four to eight, and
3. Continue to group the multi-family customers with the General class, and
4. Expand the number of Irrigation volumetric blocks from three to four, and
5. For the Water Wholesale class, reduce the existing four block volumetric block structure to two blocks. Eliminate the distinction between inside city limit (ICL) and outside city limit (OCL) wholesale rates and develop one wholesale water rate structure, and
6. Eliminate the seasonal rate structure, and
7. Apply consistent block differentials to both water delivery and the water supply rates within each rate class.

- **WASTEWATER CHARGES:**

1. Maintain existing minimum allowance of 1,496 gallons included in the service availability charge for residential and general class customers, and
2. Implement a two block volumetric rate for the Residential class, and
3. Transition from a uniform fixed availability charge structure (regardless of meter size) to a meter-based tiered availability charge tied to the size of the water meter, and
4. Continue charging a uniform fixed availability charge to wholesale wastewater customers, and

5. Continue to group the multi-family customers with the General class, and
  6. For new residential customers with no established winter consumption, consider reducing the unaveraged volume by 1 ccf (748 gallons) each year for the next 3 years in order to bring the unaveraged volume more closely in line with the system-wide Average Winter Consumption, and
  7. Eliminate the distinction between ICL and OCL wholesale rates and develop one wholesale wastewater rate structure that fully recovers the estimated cost of providing wastewater service to wholesale customers.
- **MISCELLANEOUS:**
    1. An increase in the recycled water rates of 9.6% to be consistent with weighted average potable rate adjustments, and
    2. Fireline charges for dedicated fire suppression service have not been adjusted since 1994. In order to recover the cost of providing that service, SAWS is requesting an increase in Fireline charges of 9.6%, and
    3. Increase sewer surcharges, based on cost to provide this service, of 11.7% as these charges have not been adjusted since 2003, and
    4. Implement an irrigation non-compliance fee and rate for customers not complying with the City Ordinance requiring an annual inspection of automated irrigation systems for large users or large lot owners, and
    5. Integrate SAWS and District Special Project (former BexarMet) rates structures no later than January 2017, and
    6. Make improvements to SAWS affordability programs to increase participation and simplify the qualification process. Consider an expansion of direct emergency assistance provided through Project Agua, and
    7. Adjust other special service fees as included in Attachment II.

**WHEREAS**, on October 27, 2015, the SAWS Board of Trustees approved a resolution proposing the SAWS 2016 budget and rate adjustments for water delivery, water supply fee, and wastewater along with proposed rate caps or “not to exceed” amounts for 2017 for water delivery, water supply fee, and wastewater; and rate caps or “not to exceed” amounts for water supply fee for 2018, 2019 and 2020 for City Council adoption.

Whereas, the projected 2016 rate adjustments are needed to:

1. Provide funds to begin operation of the brackish groundwater desalination plant in late 2016;
2. Monitor the construction of the Vista Ridge pipeline and well fields and begin design of the necessary improvements to SAWS water delivery infrastructure in order to be able to integrate the Vista Ridge water beginning in 2019;
3. Adhere to SAWS’ commitments under the Consent Decree with the Environmental Protection Agency (EPA) related to sanitary sewer overflows;
4. Construct infrastructure to provide a redundant water source to the city’s military installations;
5. Make required infrastructure improvements in connection with the City’s bond program and other capital requirements; and
6. Improve SAWS financial metrics in order to support and maintain SAWS’ strong bond credit ratings; and

**WHEREAS**, as part of the development of the SAWS multi-year financial plan for 2016 through 2020, SAWS is requesting that City Council approve rate adjustments as outlined in the table below:

	2016	2017	2018	2019	2020
Water Supply Fee	1.8%	3.2%	1.3%	4.5%	9.9%
Wastewater & Water Delivery	5.7%	4.7%	TBD	TBD	TBD
Total	7.5%	7.9%	TBD	TBD	TBD

The rate adjustment percentages are based on the impact to the average residential customer and assumes a monthly consumption of 7,092 gallons of water and 5,668 gallons of wastewater; and

**WHEREAS**, the 2016 rate adjustments would become effective on January 1, 2016 with all pre-approved rate adjustments for 2017 through 2020 being subject to a review by the Public Utilities Office; and

**WHEREAS**, if the Public Utilities Office agrees with SAWS' request and the request does not exceed the pre-approved amounts as listed in the table above, the rates will go into effect automatically on January 1st of each respective calendar year without further City Council action. While no further City Council action will be required if the rate adjustment in any respective calendar year is within the pre-approved amounts, representatives of SAWS and City staff will brief the City Council in B Session prior to the implementation of any such rate adjustment; and

**WHEREAS**, City staff has conducted a comprehensive review of the proposed rate adjustments and proposed rate structure changes outlined above and was involved in the process beginning in 2014 as SAWS conducted a Comprehensive Cost of Service and Rate Design Study and as SAWS was developing its revenue requirements and rate models for the 2016 Budget and 5-Year Plan; and

**WHEREAS**, based on the analysis performed, staff's professional recommendation is for approval of the Rate Advisory Committee's proposed rate structure and rate adjustments including a 7.5% increase for 2016 and the rate plan for 2017- 2020; and

**WHEREAS**, staff's professional recommendation is that SAWS should outreach and provide additional assistance to affordability customers with higher water usage in blocks 4 through 8 and in conjunction with this process, they should also monitor the affordability program in relation to rate increases in the future; and

**WHEREAS**, staff's professional recommendation is that SAWS work to improve customer service business processes including evaluating technology enhancements to address billing concerns and focus on water loss reduction; and



**WHEREAS**, pursuant to Article XI, Section 136 of the San Antonio City Charter, the Supervisor of Public Utilities is required to “assemble the facts which are essential to proper determination of cost of service and the fixing of reasonable rates” for the purpose of presenting a report and recommendations to City Council associated with proposed rate adjustments by SAWS; **NOW THEREFORE:**

**BE IT ORDAINED BY THE CITY COUNCIL OF THE CITY OF SAN ANTONIO:**

**SECTION 1.** In the exercise of its governmental regulatory authority, the City Council of the City of San Antonio approves the proposed rate structure modifications and adjustments to the water delivery, water supply fee, and wastewater rates as reflected in Attachment I, Schedules A through E effective with consumption on or about January 1, 2016.

**SECTION 2.** The City Council approves the proposed rate adjustments to the recycled water rates as reflected in Attachment I, Schedule F effective with consumption on or about January 1, 2016.

**SECTION 3.** The City Council affirms and ratifies a water rate class as reflected in Attachment I, Schedule G for former Bexar Metropolitan Water District service area customers upon the dissolution of the District Special Project. Furthermore, the City Council affirms that rates in this class shall not be changed until full rate integration of the System and the former Bexar Metropolitan Water District occurs as required by law.

**SECTION 4.** Chapter 34 of the San Antonio Code of Ordinances is amended to be consistent with the modifications made to the rate structures as reflected in Attachment I, Schedules A through G by adding the underscored words, rates and fees, and deleting those struck through words, rates and fees.

**SECTION 5.** The City Council approves additional adjustments to the water delivery rates, water supply fee rates and wastewater rates, not to exceed 7.9% for the average residential customer using 7,092 gallons of water and 5,668 gallons of wastewater as well as to recycled water rates, no more than 12.3% for consumption on or about January 1, 2017 equal to or less than the maximum rate adjustments set forth in Attachment II.

**SECTION 6.** The City Council approves additional adjustments to the water supply fee rates for consumption on or about January 1, 2017, January 1, 2018, January 1, 2019 and January 1, 2020, respectively equal to or less than the maximum rate adjustments set forth in Attachment II.

**SECTION 7.** The City Council adopts certain special services fees-related amendments to Chapter 34 of the City Code, all as set forth in Attachment III to be effective on or about January 1, 2016, to include provisions for certain of the special services fees to automatically increase at the annual rate of inflation each year after 2016 by adding the underscored words, rates and fees, and deleting those struck through words, rates and fees.

**SECTION 8.** Within 60 days following the effective date of this Ordinance, SAWS shall send notification of the new rates to all affected customers by direct mail or electronic message for customers that have elected to receive electronic invoices.

**SECTION 9.** The adjusted rates are based on the cost of service method and were reviewed by the Supervisor of Public Utilities, and based on the testimony presented and analysis conducted by SAWS and the Supervisor of Public Utilities, the City Council of the City of San Antonio finds and determines that said rate adjustments are fair and reasonable, equal and uniform, nondiscriminatory, and necessary to meet the revenue requirements of the SAWS utility system.

**SECTION 10.** This Ordinance becomes effective immediately upon the receipt of eight affirmative votes, or in the event eight affirmative votes are not received, on the tenth day after passage. The revised rates as approved by this Ordinance shall become effective on January 1, 2016.

**PASSED AND APPROVED**, this 19th day of November, 2015.

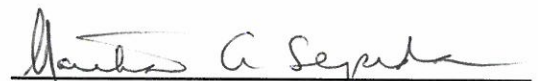


**M A Y O R**  
Ivy R. Taylor

**ATTEST:**

  
\_\_\_\_\_  
Leticia M. Vacek, City Clerk

**APPROVED AS TO FORM:**

  
\_\_\_\_\_  
Martha G. Sepeda, Acting City Attorney

<b>Agenda Item:</b>	4
<b>Date:</b>	11/19/2015
<b>Time:</b>	01:06:10 PM
<b>Vote Type:</b>	Motion to Approve
<b>Description:</b>	An Ordinance approving 1) modifications to the SAWS water and wastewater rate structure; 2) adjustments to the 2016 residential, general, irrigation, wholesale and recycled class rates, including a rate plan for 2017-2020; 3) various fees and charges related to services provided by SAWS; 4) the establishment of the rate class and reaffirmation of the rates for the District Special Project; and 5) amending the City Code to be consistent with those modifications. [Ben Gorzell, Chief Financial Officer; Robert R. Puente, President and CEO, San Antonio Water System]
<b>Result:</b>	Passed

Voter	Group	Not Present	Yea	Nay	Abstain	Motion	Second
Ivy R. Taylor	Mayor		x				
Roberto C. Treviño	District 1		x				
Alan Warrick	District 2		x				
Rebecca Viagran	District 3		x				
Rey Saldaña	District 4		x				
Shirley Gonzales	District 5		x				
Ray Lopez	District 6	x					
Cris Medina	District 7		x				
Ron Nirenberg	District 8		x				
Joe Krier	District 9		x			x	
Michael Gallagher	District 10		x				x

## ATTACHMENT I

### RATE-RELATED AMENDMENTS TO CHAPTER 34, ARTICLE II OF THE SAN ANTONIO CITY CODE

The City Code of the City of San Antonio Chapter 34, Water and Sewers, Article II, Water Service and Rates, Section 34-121, Establishment of Rate Schedules is hereby amended by deleting the language that is stricken and adding the language that is underlined (added) as set forth herein.

#### **Article II. Water Service and Rates**

##### **Section 34-121. Establishment of Rates and Schedules**

The schedule of water service rates and charges contained in Schedule A relating to residential water customers, the schedule of water service rates and charges contained in Schedule B relating to general water customers, the schedule of water service rates and charges in Schedule C relating to wholesale water customers, and the schedule of water service rates and charges in Schedule D for irrigation water rates, as amended, attached hereto, shall be effective for all consumption on or about January 1, ~~2015~~ 2016 and shall be the lawful rates for water service to be charged by the System.

The City Code of the City of San Antonio Chapter 34, Water and Sewers, Article II, Water Service and Rates, Section 34-122, Rate Schedules is hereby amended by deleting the language that is stricken and adding the language that is underlined (added) as set forth herein.

##### **Section 34-122. Rate Schedules**

Rate Schedules A, B, C and D relating to residential, general and wholesale, and irrigation customers are hereby amended and shall hereinafter read as attached hereto and incorporated herein.

##### **Section 34-132. Establishment of Rates and Schedules for Former District Special Project Customers**

The schedule of water service rates and charges contained in Schedule G relating to customers of the former District Special Project, attached hereto, shall be effective for all consumption on or about the date of dissolution of the District Special Project (as determined to have occurred by provision of City ordinance) and shall be the lawful rates for water service to be charged by the System to customers of the former District Special Project at least until integration of the System and the former Bexar Metropolitan Water District is accomplished pursuant to and as required by law.

**RATE-RELATED AMENDMENTS TO CHAPTER 34, ARTICLE III OF THE SAN ANTONIO CITY CODE**

The City Code of the City of San Antonio Chapter 34, Water and Sewers, Article III, Sewer Service and Rates, Section 34-226, Establishment of Rates and Schedules, is hereby amended by deleting the language that is stricken and adding the language that is underlined (added) as set forth herein.

**Article III, Sewer Service and Rates**

Rate Schedules A, B, and C relating to wastewater residential, general, and wholesale customers are hereby amended and shall hereinafter read as attached hereto and incorporated herein.

**Section 34.226. Establishment of Rates and Schedules, Rates Schedules and Affordability Discount Analysis**

The schedule of sewer service rates and charges contained in Schedule A for residential sewer service customers, the schedule of sewer service rates and charges contained in Schedule B for general sewer service customers, and the sewer service rates and charges contained in Schedule C for wholesale sewer service customers, as amended attached hereto, shall be effective for all consumption on or about January 1, ~~2015~~ 2016, and shall be the lawful rates for sewer service to be charged by the System except as specified below:-

Customers approved by SAWS for participation in the Flat Rate Sewer Program in accordance with Section 34-226.2 shall pay sewer charges as required under the Flat Rate Sewer Program.

Rate Schedules A, B and C relating to sewer service for residential, general and wholesale customers are hereby amended and shall hereinafter read as attached hereto and incorporated herein.



**RATE-RELATED AMENDMENTS TO CHAPTER 34, ARTICLE VIII OF THE SAN ANTONIO CITY CODE**

The City Code of the City of San Antonio Chapter 34, Water and Sewers, Article VIII, Recycled Water Service and Rates is hereby amended by deleting the language that is stricken and adding the language that is underlined (added) as set forth herein.

**Article VIII, Recycled Water Service and Rates**

**Section 34-1301. Establishment of Rates.**

The rates and charges for recycled water service which will be applied to all recycled water consumption beginning on or about January 1, ~~2015~~ 2016 are set out in Schedule F to this Chapter and shall be the lawful rates for recycled water service to be charged by the System.

**RATE-RELATED AMENDMENTS TO CHAPTER 34, ARTICLE IX OF THE SAN ANTONIO CITY CODE**

The City Code of the City of San Antonio Chapter 34, Water and Sewers, Article IX, Water Supply Fee is hereby amended by deleting the language that is stricken and adding the language that is underlined (added) as set forth herein.

**Article IX, Water Supply Fee**

**Section 34-1345. Water Supply Fee Schedule**

The Water Supply Fee which will be applied to all consumption beginning on or about January 1, ~~2015~~ 2016 is set out in Schedule E to this Chapter. Such water supply fee schedule shall remain in effect as set out in Schedule E until the System's Board of Trustees and Council of the City of San Antonio determine that an additional adjustment is necessary to most effectively meet the water supply development needs of system customers.

**SCHEDULE A**  
**RESIDENTIAL CLASS WATER AND SEWER RATE SCHEDULES**  
**SAN ANTONIO WATER SYSTEM**  
 San Antonio, Texas  
 Effective for Consumption on or about January 1, 2016

The Service Availability Charge (minimum bill) for all residential water service **INSIDE THE CITY LIMITS** of San Antonio furnished through meters of the following sizes together with the Water Monthly Volume Charges measured per 100 gallons of water usage in every instance of service for each month or fraction thereof shall be as follows:— Water service charges for all metered residential water connections **INSIDE THE CITY LIMITS** of San Antonio shall be the sum of the appropriate Water Service Availability Charge and the application of the Water Monthly Volume Charges to metered water usage in every instance of service for each month or fraction thereof and are billed according to the schedule below. Sewer service charges for all metered residential water connections **INSIDE THE CITY LIMITS** shall be the sum of the appropriate Sewer Service Availability Charge and the application of the Sewer Monthly Volume Charges to average monthly water usage for 90 days during three consecutive billing periods beginning after November 15 and ending on or about March 15 of each year and are billed according to the schedule below. Customers who do not have a record of winter water usage or an interim average will be billed for sewer service assuming 7,481 gallons monthly sewer usage. Customers with no San Antonio Water System or District Special Project water meter will be charged the Sewer Service Availability Charge based on a 5/8" meter size.

**MONTHLY SERVICE AVAILABILITY CHARGES**

**MONTHLY VOLUME CHARGE**

**MONTHLY VOLUME CHARGES**

Meter Size	Service Availability Charge	Water Service Availability Charge*	Sewer Service Availability Charge	Usage Blocks		Rate Per 100 Gallons		WATER		SEWER
				Gallons	Standard	Seasonal	Usage Gallon - Block Threshold	Rate Per 100 Gallons	Usage Gallon - Block Threshold	Rate Per 100 Gallons
5/8"	\$7.57	\$ 10.72	\$ 12.29	First 5,985	\$0.1006	\$0.1006	2,992 Gallons	\$0.0619	1,496 Gallons	\$0.0000
3/4"	10.63	14.19	13.52	Next 6,732	0.1457	0.1584	4,489 Gallons	0.1083	2,992 Gallons	\$0.2627
1"	16.72	21.09	15.36	Next 4,488	0.2053	0.2355	5,985 Gallons	0.1391	Over 2,992 Gallons	\$0.3941
1-1/2"	21.94	38.33	21.51	Over 17,205	0.3596	0.4880	7,481 Gallons	0.1701		
2"	\$0.18	\$ 59.01	\$ 30.73				10,473 Gallons	0.2010		
3"	92.80	107.30	61.45				14,962 Gallons	0.2320		
4"	153.67	176.26	92.18				20,199 Gallons	0.2784		
6"	305.86	348.68	153.63				Over 20,199 Gallons	0.4020		
8"	488.47	555.59	245.80							
10"	701.52	796.97	368.71							
12"	1,310.24	1,486.66	491.61							

\*Water Service Availability Charge shall be reduced by \$2.14 if usage does not exceed 2,992 gallons

The Service Availability Charge (minimum bill) for all residential water service **OUTSIDE THE CITY LIMITS** of San Antonio furnished through meters of the following sizes together with the Water Monthly Volume Charges measured per 100 gallons of water usage in every instance of service for each month or fraction thereof shall be as follows:— Water service charges for all metered residential water connections **OUTSIDE THE CITY LIMITS** of San Antonio shall be the sum of the appropriate Water Service Availability Charge and the application of the Water Monthly Volume Charges to metered water usage in every instance of service for each month or fraction thereof and are billed according to the schedule below. Sewer service charges for all metered residential water connections **OUTSIDE THE CITY LIMITS** shall be the sum of the appropriate Sewer Service Availability Charge and the application of the Sewer Monthly Volume Charges to average monthly water usage for 90 days during three consecutive billing periods beginning after November 15 and ending on or about March 15 of each year and are billed according to the schedule below. Customers who do not have a record of winter water usage or an interim average will be billed for sewer service assuming 7,481 gallons monthly sewer usage. Customers with no San Antonio Water System or District Special Project water meter will be charged the Sewer Service Availability Charge based on a 5/8" meter size.

**MONTHLY SERVICE AVAILABILITY CHARGES**

**MONTHLY VOLUME CHARGE**

**MONTHLY VOLUME CHARGES**

Meter Size	Service Availability Charge	Water Service Availability Charge*	Sewer Service Availability Charge	Usage Blocks		Rate Per 100 Gallons		WATER		SEWER
				Gallons	Standard	Seasonal	Usage Gallon - Block Threshold	Rate Per 100 Gallons	Usage Gallon - Block Threshold	Rate Per 100 Gallons
5/8"	\$9.86	\$ 13.94	\$ 14.75	First 5,985	\$0.1310	\$0.1310	2,992 Gallons	\$0.0804	1,496 Gallons	\$0.0000
3/4"	13.82	18.44	16.23	Next 6,732	0.1894	0.2060	4,489 Gallons	0.1407	2,992 Gallons	\$0.3153
1"	21.72	27.42	18.44	Next 4,488	0.2671	0.3062	5,985 Gallons	0.1809	Over 2,992 Gallons	\$0.4729
1-1/2"	41.52	49.83	25.81	Over 17,205	0.4675	0.6344	7,481 Gallons	0.2211		
2"	65.26	76.70	36.88				10,473 Gallons	0.2613		
3"	120.66	139.49	73.74				14,962 Gallons	0.3016		
4"	199.78	229.13	110.62				20,199 Gallons	0.3619		
6"	397.62	453.29	184.36				Over 20,199 Gallons	0.5227		
8"	635.03	722.26	294.97							
10"	911.98	1,036.06	442.45							
12"	1,703.33	1,932.66	589.93							

\*Water Service Availability Charge shall be reduced by \$2.79 if usage does not exceed 2,992 gallons

**SEWER**

Sewer service charges for all metered residential connections are computed on the basis of average water usage for 90 days during three consecutive billing periods beginning after November 15 and ending on or about March 15 of each year and are billed according to the rate schedules below above.

**INSIDE CITY LIMITS (ICL)**

Monthly Service Availability Charge (includes first 1,496 gallons)— \$12.69  
 Over 1,496 gallons — \$0.3365 per 100 gallons.

Customers who do not have a record of winter water usage or an interim average will be billed an Unaveraged or Unmetered Residential Charge of \$35.35 per month.

**OUTSIDE CITY LIMITS (OCL)**

Monthly Service Availability Charge (includes first 1,496 gallons)— \$15.25  
 Over 1,496 gallons — \$0.4038 per 100 gallons.

Customers who do not have a record of winter water usage or an interim average will be billed an Unaveraged or Unmetered Residential Charge of \$42.43 per month.

**SCHEDULE B**  
**GENERAL CLASS WATER AND SEWER RATE SCHEDULES**  
**SAN ANTONIO WATER SYSTEM**  
 San Antonio, Texas  
 Effective for Consumption on or about January 1, 2016

The Service Availability Charge (minimum bill) for all general water service **INSIDE THE CITY LIMITS** of San Antonio furnished through meters of the following sizes together with the Monthly Volume Charges measured per 100 gallons for water usage in every instance of service for each month or fraction thereof shall be as follows: Water service charges for all metered General Class water connections **INSIDE THE CITY LIMITS** of San Antonio shall be the sum of the appropriate Water Service Availability Charge and the application of the Water Monthly Volume Charges to metered water usage in every instance of service for each month or fraction thereof and are billed according to the schedule below. Sewer service charges for all metered General Class water connections **INSIDE THE CITY LIMITS** shall be the sum of the appropriate Sewer Service Availability Charge and the application of the Sewer Monthly Volume Charges to metered water usage and are billed according to the schedule below. Customers with no San Antonio Water System or District Special Project water meter will be charged the Sewer Service Availability Charge based on a 2" meter size.

MONTHLY SERVICE AVAILABILITY CHARGES				MONTHLY VOLUME CHARGE			MONTHLY VOLUME CHARGES		
Meter Size	Service Availability Charge	Water Service		Usage Blocks - Gallons	Rate Per 100 Gallons	WATER		SEWER	
		Availability Charge	Sewer Service Availability Charge			Rate Per 100 Gallons	Usage Gallon - Block Threshold		
5/8"	\$10.53	\$ 11.58	\$ 12.29	Base*	\$0.1218	Base*	\$0.1514	1,496 Gallons	\$0.0000
3/4"	15.05	16.55	13.52	>100-125% of Base	0.1457	>100-125% of Base	\$0.1742	Over 1,496 Gallons	\$0.3520
1"	24.08	26.46	15.36	>125-175% of Base	0.2042	>125-175% of Base	\$0.2272		
1-1/2"	46.65	51.24	21.51	>175% of Base	0.2994	>175% of Base	\$0.2651		
2"	73.74	80.92	30.73						
3"	126.96	150.27	61.45						
4"	227.28	249.30	92.18						
6"	453.06	496.88	153.63						
8"	723.99	794.02	245.80						
10"	1,040.08	1,140.64	368.71						
12"	1,943.24	2,131.04	491.61						

\*The Base Use is defined as 100% of the Annual Average Consumption

The Service Availability Charge (minimum bill) for all general water service **OUTSIDE THE CITY LIMITS** of San Antonio furnished through meters of the following sizes together with the Monthly Volume Charges measured per 100 gallons for water usage in every instance of service for each month or fraction thereof shall be as follows: Water service charges for all metered General Class water connections **OUTSIDE THE CITY LIMITS** of San Antonio shall be the sum of the appropriate Water Service Availability Charge and the application of the Water Monthly Volume Charges to metered water usage in every instance of service for each month or fraction thereof and are billed according to the schedule below. Sewer service charges for all metered General Class water connections **OUTSIDE THE CITY LIMITS** shall be the sum of the appropriate Sewer Service Availability Charge and the application of the Sewer Monthly Volume Charges to metered water usage and are billed according to the schedule below. Customers with no San Antonio Water System or District Special Project water meter will be charged the Sewer Service Availability Charge based on a 2" meter size.

MONTHLY SERVICE AVAILABILITY CHARGES				MONTHLY VOLUME CHARGE			MONTHLY VOLUME CHARGES		
Meter Size	Service Availability Charge	Water Service		Usage Blocks - Gallons	Rate Per 100 Gallons	WATER		SEWER	
		Availability Charge	Sewer Service Availability Charge			Rate Per 100 Gallons	Usage Gallon - Block Threshold		
5/8"	\$13.69	\$ 14.16	\$ 14.75	Base*	\$0.1584	Base*	\$0.1969	1,496 Gallons	\$0.0000
3/4"	19.56	20.17	16.23	>100-125% of Base	0.1893	>100-125% of Base	\$0.2265	Over 1,496 Gallons	\$0.4224
1"	31.29	32.15	18.44	>125-175% of Base	0.2654	>125-175% of Base	\$0.2954		
1-1/2"	60.65	62.09	25.81	>175% of Base	0.3887	>175% of Base	\$0.3446		
2"	95.87	97.98	36.88						
3"	178.06	181.81	73.74						
4"	295.46	301.52	110.62						
6"	588.98	600.85	184.36						
8"	941.20	960.05	294.97						
10"	1,352.11	1,379.09	442.45						
12"	2,526.17	2,576.40	589.93						

\*The Base Use is defined as 100% of the Annual Average Consumption

**SEWER**

Sewer service charges are computed from the water usage schedules below for all metered connections.

INSIDE CITY LIMITS (ICL)	OUTSIDE CITY LIMITS (OCL)
Monthly Service Availability Charge (includes first 1,496 gallons) — \$12.69	Monthly Service Availability Charge (includes first 1,496 gallons) — \$15.25
Over 1,496 gallons — \$0.3365 per 100 gallons.	Over 1,496 gallons — \$0.4038 per 100 gallons.

**SCHEDULE C**  
**WHOLESALE CLASS WATER AND SEWER RATE SCHEDULES**  
**SAN ANTONIO WATER SYSTEM**  
 San Antonio, Texas  
 Effective for Consumption on or about January 1, 2016

The Service Availability Charge (minimum bill) for all wholesale water service **INSIDE THE CITY LIMITS** of San Antonio furnished through meters of the following sizes together with the Monthly Volume Charge measured per 100 gallons for water usage in every instance of service for each month or fraction thereof shall be as follows: Water service charges for all metered wholesale water connections shall be the sum of the appropriate Water Service Availability Charge and the application of the Water Monthly Volume Charges to metered water usage in every instance of service for each month or fraction thereof and are billed according to the schedule below. Sewer service charges for all metered wholesale water connections shall be the sum of the appropriate Sewer Service Availability Charge and the application of the Sewer Monthly Volume Charges to metered water usage and are billed according to the schedule below.

MONTHLY SERVICE AVAILABILITY CHARGES				MONTHLY VOLUME CHARGE		MONTHLY VOLUME CHARGES			
						WATER		SEWER	
								Usage	
								Gallon -	
Meter Size†	Meter-Size	Water Service Availability Charge	Sewer Service Availability Charge	Usage Blocks, Gallons	Rate Per 100 Gallons	Usage Gallon - Block Threshold	Rate Per 100 Gallons	Block Threshold	Rate Per 100 Gallons
6"	\$305.86	\$ 450.50	\$ 287.82	Base*	\$0.0845	Base*	\$0.1755	All Usage	\$0.3756
8"	488.47	\$ 719.48	\$ 287.82	>100-125% of Base	0.1269	Over Base	0.5266		
10"	701.52	\$ 1,033.28	\$ 287.82	>125-175% of Base	0.1833				
12"	1,310.24	\$ 1,929.88	\$ 287.82	>175% of Base	0.2592				

\*The Base Use is defined as 100% of the Annual Average Consumption or as agreed to by the wholesale customer and approved by the SAWS Board of Trustees.

The Service Availability Charge (minimum bill) for all wholesale water service **OUTSIDE THE CITY LIMITS** of San Antonio furnished through meters of the following sizes together with the Monthly Volume Charge measured per 100 gallons for water usage in every instance of service for each month or fraction thereof shall be as follows:

MONTHLY SERVICE AVAILABILITY CHARGE		MONTHLY VOLUME CHARGE	
Meter-Size†	Service Availability Charge	Usage Blocks, Gallons	Rate Per 100 Gallons
6"	\$397.62	Base*	\$0.1098
8"	635.03	>100-125% of Base	0.1650
10"	911.98	>125-175% of Base	0.2383
12"	1,703.33	>175% of Base	0.3369

\*The Base Use is defined as 100% of the Annual Average Consumption.

† Wholesale water service will not be provided through a meter smaller than 6" in order to comply with fire-flow requirements and the "Criteria for Water Supply and Distribution in the City of San Antonio and its Extraterritorial Jurisdiction."

**SEWER**

**INSIDE CITY LIMITS (ICL)**

\$0.2850 ~~\$0.3032~~ Monthly Volume Charge per 100 gallons of contributed wastewater. (~~\$2.14~~ ~~\$2.28~~ per 100 cubic feet)

**OUTSIDE CITY LIMITS (OCL)**

\$140.06 ~~\$149.02~~ Monthly Service Availability Charge plus \$0.3422 ~~\$0.3641~~ Monthly Volume Charge per 100 gallons of contributed wastewater. (~~\$2.56~~ ~~\$2.72~~ per 100 cubic feet)



**SCHEDULE D**  
**IRRIGATION CLASS WATER AND SEWER RATE SCHEDULES**  
**SAN ANTONIO WATER SYSTEM**

San Antonio, Texas

Effective for Consumption on or about January 1, 2016

The Service Availability Charge (minimum bill) for all irrigation water service **INSIDE THE CITY LIMITS** of San Antonio furnished through meters of the following sizes together with the Monthly Volume Charge measured per 100 gallons for water usage in every instance of service for each month or fraction thereof shall be as follows: Water service charges for all irrigation water service **INSIDE THE CITY LIMITS** of San Antonio shall be the sum of the appropriate Service Availability charge and the application of the Monthly Volume Charges to metered water usage in every instance of service for each month or fraction thereof and are billed according to the schedule below.

MONTHLY SERVICE AVAILABILITY CHARGE		MONTHLY VOLUME CHARGE			MONTHLY VOLUME CHARGES	
Meter Size	Service Availability Charge	Usage Blocks - Gallons	Rate Per 100 Gallons		Usage Gallon - Block Threshold	Rate Per 100 Gallons
			Standard	Seasonal		
5/8"	\$10.53 \$ 11.58	0-Gallons	\$0.0000	\$0.0000	8,229 Gallons	\$0.2752
3/4"	15.05 \$ 16.55	Next 6,732	0.1713	0.1713	17,954 Gallons	0.3852
1"	24.08 \$ 26.46	Next 10,473	0.2053	0.2384	162,316 Gallons	0.4953
1-1/2"	46.65 \$ 51.24	Over 17,205	0.3596	0.4936	Over 162,316 Gallons	0.6329
2"	73.74 \$ 80.92					
3"	136.96 \$ 150.27					
4"	227.28 \$ 249.30					
6"	453.06 \$ 496.88					
8"	723.99 \$ 794.02					
10"	1,040.08 \$ 1,140.64					
12"	1,943.21 \$ 2,131.04					

The Volume Charge "Seasonal" Rate Per 100 Gallons shall be applied to all billings beginning on or about May 1 and ending after five complete billing months on or about September 30 of each year. At all other times the Volume Charge "Standard" Rate Per 100 Gallons shall be utilized.

The Service Availability Charge (minimum bill) for all irrigation water service **OUTSIDE THE CITY LIMITS** of San Antonio furnished through meters of the following sizes together with the Monthly Volume Charge measured per 100 gallons for water usage in every instance of service for each month or fraction thereof shall be as follows: Water service charges for all irrigation water service **OUTSIDE THE CITY LIMITS** of San Antonio shall be the sum of the appropriate Service Availability charge and the application of the Monthly Volume Charges to metered water usage in every instance of service for each month or fraction thereof and are billed according to the schedule below.

MONTHLY SERVICE AVAILABILITY CHARGE		MONTHLY VOLUME CHARGE			MONTHLY VOLUME CHARGES	
Meter Size	Service Availability Charge	Usage Blocks - Gallons	Rate Per 100 Gallons		Usage Gallon - Block Threshold	Rate Per 100 Gallons
			Standard	Seasonal		
5/8"	\$13.69 \$ 14.16	0-Gallons	\$0.0000	\$0.0000	8,229 Gallons	\$0.3577
3/4"	19.56 \$ 20.17	Next 6,732	0.2225	0.2225	17,954 Gallons	\$0.5008
1"	31.29 \$ 32.15	Next 10,473	0.2670	0.3100	162,316 Gallons	\$0.6439
1-1/2"	60.65 \$ 62.09	Over 17,205	0.4675	0.6416	Over 162,316 Gallons	\$0.8227
2"	95.87 \$ 97.98					
3"	178.06 \$ 181.81					
4"	295.46 \$ 301.52					
6"	588.98 \$ 600.85					
8"	941.20 \$ 960.05					
10"	1,352.11 \$ 1,379.09					
12"	2,526.17 \$ 2,576.40					

The Volume Charge "Seasonal" Rate Per 100 Gallons shall be applied to all billings beginning on or about May 1 and ending after five complete billing months on or about September 30 of each year. At all other times the Volume Charge "Standard" Rate Per 100 Gallons shall be utilized.

**SCHEDULE E**  
**WATER SUPPLY FEE SCHEDULE**  
**SAN ANTONIO WATER SYSTEM**

San Antonio, Texas

Effective for Consumption on or about January 1, 2016

The Water Supply Fee shall be assessed on all potable water service for water usages in every instance of service for each month or fraction thereof shall be as follows: according to the schedule below.

Rate Class	Usage Blocks, Gallons	Fee to be Assessed (per 100 gallons)	Rate Class	Usage Gallon - Block Threshold	Fee to be Assessed (per 100 gallons)
Residential	First 5,985	\$0.1285	Residential	2,992 Gallons	\$0.0892
	Next 6,732	\$0.1858		4,489 Gallons	\$0.1561
	Next 4,488	\$0.2622		5,985 Gallons	\$0.2007
	Over 17,205	\$0.4589		7,481 Gallons	\$0.2454
General	Base*	\$0.1976	General	10,473 Gallons	\$0.2900
	>100-125% of Base	\$0.1976		14,962 Gallons	\$0.3346
	>125-175% of Base	\$0.1976		20,199 Gallons	\$0.4015
	>175% of Base	\$0.1976		Over 20,199 Gallons	\$0.5798
Wholesale	Base*	\$0.1976	General	Base*	\$0.1683
	>100-125% of Base	\$0.1976		125% of Base	\$0.1936
	>125-175% of Base	\$0.1976		175% of Base	\$0.2525
	>175% of Base	\$0.1976		Over 175% of Base	\$0.2946
Irrigation	0 Gallons	\$0.0000	Wholesale	Base**	\$0.2193
	Next 6,732	\$0.1976		Over Base	\$0.6579
	Next 10,473	\$0.2622	Irrigation	8,229 Gallons	\$0.2202
	Over 17,205	\$0.4976		17,954 Gallons	\$0.3083
			162,316 Gallons	\$0.3964	
			Over 162,316 Gallons	\$0.5066	

\*The Base Use for the General Class is defined as 100% of the Annual Average Consumption

\*\*The Base Use for the Wholesale Class is defined as 100% of the Annual Average Consumption or as agreed to by the wholesale customer and approved by the SAWS Board of Trustees.

**SCHEDULE F  
RECYCLED WATER RATE SCHEDULES  
SAN ANTONIO WATER SYSTEM  
San Antonio, Texas**

Effective for Consumption on or about January 1, 2016

Water service charges for all recycled water service shall be the sum of the appropriate Service Availability Charge and the application of the Monthly Volume Charges to metered water usage in every instance of service for each month or fraction thereof and are billed according to the appropriate schedule below.

**EDWARDS EXCHANGE CUSTOMERS**

MONTHLY SERVICE AVAILABILITY CHARGE

<u>Meter Size</u>	<u>Service Availability Charge</u>	
5/8"	<del>\$9.51</del>	<u>\$10.42</u>
3/4"	<del>12.37</del>	<u>13.56</u>
1"	<del>16.11</del>	<u>17.66</u>
1-1/2"	<del>25.61</del>	<u>28.07</u>
2"	<del>37.45</del>	<u>41.05</u>
3"	<del>99.61</del>	<u>109.17</u>
4"	<del>148.06</del>	<u>162.27</u>
6"	<del>282.44</del>	<u>309.55</u>
8"	<del>425.73</del>	<u>466.60</u>
10"	<del>583.77</del>	<u>639.81</u>
12"	<del>720.27</del>	<u>789.42</u>

MONTHLY VOLUME CHARGE

<u>Usage Blocks</u>	<u>Rate Per 100 Gallons</u>		<u>Rate Per 100 Gallons</u>	
	<u>Standard</u>	<u>Seasonal</u>	<u>Standard</u>	<u>Seasonal</u>
Transferred Amount	<del>\$0.0250</del>	<del>\$0.0250</del>	<u>\$0.0274</u>	<u>\$0.0274</u>
All in excess of transferred amount	<del>0.0938</del>	<del>0.0997</del>	<u>0.1028</u>	<u>0.1093</u>

The Volume Charge "Seasonal" Rate Per 100 Gallons shall be applied to all billings beginning on or about May 1 and ending after five complete billing months on or about September 30 of each year. At all other times the Volume Charge "Standard" Rate Per 100 Gallons shall be utilized.

**NON EDWARDS EXCHANGE CUSTOMERS**

MONTHLY SERVICE AVAILABILITY CHARGE

<u>Meter Size</u>	<u>Service Availability Charge</u>	
5/8"	<del>\$9.51</del>	<u>\$10.42</u>
3/4"	<del>12.37</del>	<u>13.56</u>
1"	<del>16.11</del>	<u>17.66</u>
1-1/2"	<del>25.61</del>	<u>28.07</u>
2"	<del>37.45</del>	<u>41.05</u>
3"	<del>99.61</del>	<u>109.17</u>
4"	<del>148.06</del>	<u>162.27</u>
6"	<del>282.44</del>	<u>309.55</u>
8"	<del>425.73</del>	<u>466.60</u>
10"	<del>583.77</del>	<u>639.81</u>
12"	<del>720.27</del>	<u>789.42</u>

MONTHLY VOLUME CHARGE

<u>Usage Blocks</u>	<u>Rate Per 100 Gallons</u>		<u>Rate Per 100 Gallons</u>	
	<u>Standard</u>	<u>Seasonal</u>	<u>Standard</u>	<u>Seasonal</u>
First 748,000	<del>\$0.1004</del>	<del>\$0.1079</del>	<u>\$0.1100</u>	<u>\$0.1183</u>
Over 748,000	<del>0.1026</del>	<del>0.1089</del>	<u>0.1124</u>	<u>0.1194</u>

The Volume Charge "Seasonal" Rate Per 100 Gallons shall be applied to all billings beginning on or about May 1 and ending after five complete billing months on or about September 30 of each year. At all other times the Volume Charge "Standard" Rate Per 100 Gallons shall be utilized.

SCHEDULE G

WATER RATE CLASS SCHEDULE FOR FORMER DISTRICT SPECIAL PROJECT CUSTOMERS

SAN ANTONIO WATER SYSTEM

San Antonio, Texas

Effective for Consumption on or about Date of Dissolution of the District Special Project

RESIDENTIAL WATER RATES

<u>METER CHARGE - MINIMUM BILL *</u>		<u>MONTHLY VOLUME CHARGE</u>	
<u>Meter Size</u>	<u>Charge per month</u>	<u>Usage Tier</u>	<u>Rate per 100 Gallons</u>
<u>5/8"</u>	<u>\$7.93</u>	<u>0 - 5,000 Gallons</u>	<u>\$0.0890</u>
<u>3/4"</u>	<u>10.38</u>	<u>5,001 - 10,000 Gallons</u>	<u>0.1430</u>
<u>1"</u>	<u>15.87</u>	<u>10,001 - 17,000 Gallons</u>	<u>0.3950</u>
<u>1-1/2"</u>	<u>39.64</u>	<u>Above 17,000 Gallons</u>	<u>0.6300</u>
<u>2"</u>	<u>63.47</u>		

COMMERCIAL WATER RATES

<u>METER CHARGE - MINIMUM BILL *</u>		<u>MONTHLY VOLUME CHARGE</u>	
<u>Meter Size</u>	<u>Charge per month</u>	<u>Usage Tier</u>	<u>Rate per 100 Gallons</u>
<u>5/8"</u>	<u>\$24.41</u>	<u>0 - 40,000 Gallons</u>	<u>\$0.2540</u>
<u>3/4"</u>	<u>30.51</u>	<u>40,001 - 150,000 Gallons</u>	<u>0.4950</u>
<u>1"</u>	<u>48.82</u>	<u>Above 150,000 Gallons</u>	<u>0.8000</u>
<u>1-1/2"</u>	<u>122.06</u>		
<u>2"</u>	<u>195.30</u>		
<u>2.5"</u>	<u>317.35</u>		
<u>3"</u>	<u>439.31</u>		
<u>4"</u>	<u>781.18</u>		
<u>6"</u>	<u>1,708.83</u>		
<u>8"</u>	<u>2,929.43</u>		

\* Meter Charge: This fee is combined with the Volumetric Charge to make up the Water Service Charge portion of the bill.

WATER SUPPLY FEE

This fee directly funds the acquisition of new water supplies to reduce San Antonio's dependence on the Edwards Aquifer. The Water Supply Fee is assessed on all potable water service for water usage in every instance of service for each month or fraction.

Rate per  
100 Gallons  
\$0.1840

**ATTACHMENT II**

**SAN ANTONIO WATER SYSTEM**

**MAXIMUM RATE ADJUSTMENTS FOR 2017**

Maximum Rate Adjustments effective for consumption on or about January 1, 2017

<b>RATE</b>	<b>MAXIMUM RATE ADJUSTMENT</b>
AVERAGE WATER DELIVERY, WATER SUPPLY FEE AND WASTEWATER RATE IMPACT*	7.9%
RECYCLED WATER	12.3%

\*Represents the combined impact on the average SAWS residential customer before EAA and TCEQ pass-through fees. Assumes monthly water usage of 7,092 gallons and wastewater usage of 5,668 gallons.



**ANNUAL MAXIMUM AUTHORIZED  
WATER SUPPLY FEE RATES  
2017 - 2020**

**SAN ANTONIO WATER SYSTEM**

San Antonio, Texas

Effective for Consumption on or about January 1 of each year

The Water Supply Fee assessed per 100 gallons on all potable water service for water usages in every instance of service for each month or fraction thereof shall be as follows:

<u>Rate Class</u>	<u>Usage Gallon - Block Threshold</u>	<u>2017</u>	<u>2018</u>	<u>2019</u>	<u>2020</u>
<u>Residential</u>	2,992 Gallons	\$0.1038	\$0.1105	\$0.1341	\$0.1910
	4,489 Gallons	\$0.1817	\$0.1935	\$0.2349	\$0.3345
	5,985 Gallons	\$0.2336	\$0.2488	\$0.3020	\$0.4300
	7,481 Gallons	\$0.2856	\$0.3042	\$0.3693	\$0.5259
	10,473 Gallons	\$0.3376	\$0.3595	\$0.4364	\$0.6214
	14,962 Gallons	\$0.3895	\$0.4148	\$0.5036	\$0.7171
	20,199 Gallons	\$0.4673	\$0.4977	\$0.6042	\$0.8604
	Over 20,199 Gallons	\$0.6749	\$0.7188	\$0.8726	\$1.2426
<u>General</u>	Base*	\$0.1959	\$0.2086	\$0.2532	\$0.3606
	125% of Base	\$0.2254	\$0.2401	\$0.2915	\$0.4151
	175% of Base	\$0.2939	\$0.3130	\$0.3800	\$0.5411
	Over 175% of Base	\$0.3429	\$0.3652	\$0.4434	\$0.6314
<u>Wholesale</u>	Base*	\$0.2553	\$0.2719	\$0.3301	\$0.4701
	Over Base	\$0.7658	\$0.8156	\$0.9901	\$1.4099
<u>Irrigation</u>	8,229 Gallons	\$0.2563	\$0.2730	\$0.3314	\$0.4719
	17,954 Gallons	\$0.3589	\$0.3822	\$0.4640	\$0.6607
	162,316 Gallons	\$0.4614	\$0.4914	\$0.5966	\$0.8496
	Over 162,316 Gallons	\$0.5897	\$0.6280	\$0.7624	\$1.0857

\*The Base Use is defined as 100% of the Annual Average Consumption

## ATTACHMENT III

### SPECIAL SERVICES FEES-RELATED AMENDMENTS TO CHAPTER 34, ARTICLE III OF THE SAN ANTONIO CITY CODE

The City Code of the City of San Antonio Chapter 34 is hereby amended by deleting the language that is stricken and adding the language that is underlined (added) as set forth herein.

*Amend language as shown in the following section:*

#### **Section 34-3.07. Encroachment or easement release application processing fee**

A request to allow an encroachment on, over and/or across an existing SAWS easement or to release (in whole or in part) an existing SAWS easement must be submitted to SAWS development engineering services in accordance with procedures and requirements established by SAWS. The non-refundable application processing fee for the encroachment or release request is ~~\$430.00~~ \$628.00. SAWS may require applicant to verify ownership, and if property owner is a legal entity, documentation will be required demonstrating applicant's authority to make an application on behalf of the entity. If the encroachment is approved by SAWS, an agreement, prepared by SAWS corporate real estate, will be entered into between the property owner and SAWS granting the encroachment. If the easement release request is approved, SAWS corporate real estate will either (i) if SAWS paid consideration for the easement, enter into negotiations the consideration for the full or partial release of the easement, or (ii) if the easement was dedicated to SAWS, prepare the release for SAWS execution.

*Add the following section:*

#### **Section 34-132. Irrigation System Inspection Compliance Fees**

Failure to comply with the annual inspection requirements contained in Section 34-273(3) shall result in the assessment of the following additional charges on the account associated with the irrigation system

- (a) Annual enforcement fee in the amount of \$153.00; this fee shall be assessed on an annual basis until the requirements of Section 34-273(3) have been met; and
- (b) Additional volumetric rate of \$0.0969 per 100 gallons on all irrigation consumption on a monthly basis; this additional rate shall continue to be assessed until the requirements of Section 34-273(3) have been met.

*Delete the following section:*

#### **~~Section 34-231. Monthly charges to new, vacant, residential or commercial structures.~~**

~~In the event that a newly constructed, vacant, residential structure is connected to a public sewer collection system, the unaveraged residential charge (I.C.L., O.C.L. or entity) shall be the basis for monthly sewer service billings to the owner of the newly constructed, vacant,~~

~~residential structure after the expiration of six (6) months from the date that water service commences to said structure.~~

~~In the event that a newly constructed, vacant, commercial structure is connected to a public sewer collection system, the general service minimum charge on their contributed flow (I.C.L., O.C.L. or entity) shall be the basis for monthly sewer service billings to the owner of the newly constructed, vacant, commercial structure after the expiration of twelve (12) months from date that water service commences to said structure.~~

*Amend language as shown in the following section:*

**Sec. 34-226.3(a). - Industrial waste surcharges.**

(a) Persons or owners discharging industrial wastes which exhibit none of the characteristics of wastes prohibited by Ordinance Number 77784, or as may be amended, other than excessive BOD or TSS, but having a concentration in excess of normal domestic sewage, that is, concentrations of BOD in excess of 250 mg/l and TSS in excess of 250 mg/l, shall pretreat the industrial waste to meet the concentrations of normal domestic sewage; however, such excessive BOD and TSS waste may be accepted for treatment if all the following requirements are met:

- (1) The wastes will not cause damage to the collection system.
- (2) The wastes will not impair the system's treatment process.
- (3) The wastes will not cause contamination of POTW sludges thus limiting sludge disposal options or practices.
- (4) The person(s) or owners responsible for the wastes pays an industrial surcharge, in addition to the regular water and sewer charges, in accordance with the following cost factors and formula:

V	=	Volume of water use reported in millions of gallons (MG) per month.
BOD	=	Biochemical oxygen demand analyzed in accordance with the procedures approved under 40 CFR Part 136, or the latest Environmental Protection Agency (EPA) approved method, and reported in units of milligrams per liter (mg/l).
TSS	=	Total suspended solids analyzed in accordance with the procedures approved under 40 CFR Part 136, or the latest Environmental Protection Agency (EPA) approved method, and reported in units of milligrams per liter (mg/l).

Cost factor BOD = ~~\$1.62~~ \$1.81

Cost factor TSS = ~~\$1.50~~ \$1.68

IWS = Industrial waste surcharge computed in dollars as follows: IWS Volume of discharge (in MG per Month) [~~\$1.62~~ \$1.81 × (BOD mg/l - 250 mg/l) + ~~\$1.50~~ \$1.68 × (TSS mg/l) - 250 mg/l].

*Amend language as shown in the following section:*

**Section 34-484. Fees.**

It is the purpose of this section to provide for the recovery of costs from users of the control authority wastewater disposal system for the implementation and continued operation of the pretreatment program established herein. All industrial users shall pay the following fees, as appropriate, and in accordance with the current fee schedule, within thirty (30) days of billing:

- (a) A permit application fee
- (b) A permit fee;
- (c) Sampling fee;
- (d) Analysis fee;
- (e) Environmental assessment;
- (f) Other fees as the control authority may deem necessary to carry out the requirements contained herein, such as, but not limited to emergency response fees, special sampling fees, monitoring equipment reset fees, etc. These fees relate solely to the matters covered by this division and are separate from all other fees, fines, and penalties chargeable by the control authority or any other agency.

The special services charges outlined in Schedule E, industrial waste fee schedule, relating to industrial waste permits and services shall be lawful rates charged by the system effective January 1, ~~2012~~ 2016. The Schedule E charges shall be adjusted on January 1 of each year thereafter by the percentage difference (greater than zero) between the Consumer Price Index for All Urban Consumers (CPI-U) as it is calculated by the United States Bureau of Labor Statistics at the end of the month of July prior to the next year and as it was calculated at the end of the month of July one year earlier. The city water system board of trustees is hereby authorized to amend the fee schedule, from time to time, by resolution, when a change in the amount of fees is required to adequately recover the costs reasonably related to the performance of the functions for which the fee is charged. SAWS will periodically perform a cost of service analysis to ensure that the fees charged do not exceed the cost of providing the services.

*Amend language as shown in the following section:*

**Section 34-521. Fees.**

All liquid waste transporters shall pay the following fees, as appropriate, and in accordance with the current fee schedule:

- (1) A permit fee for each vehicle to be permitted;
- (2) A fee for each reinspection required for a vehicle to qualify for an annual liquid waste hauling permit;
- (3) A sampling fee;
- (4) An analysis fee;
- (5) A disposal site fee for disposing of septic or chemical toilet wastes at a control authority disposal facility;
- (6) A manifest booklet fee;
- (7) Other fees as the control authority may deem necessary to carry out the requirements contained herein, such as, but not limited to emergency response fees or special sampling

fees. These fees relate solely to the matters covered by this division and are separate from all other fees, fines and penalties chargeable by the control authority or any other agency.

The special service charges outlined in Schedule F, liquid waste hauler fee schedule, relating to liquid waste hauler permits shall be lawful rates charged by the system effective January 1, 2012 2016. The Schedule F charges shall be adjusted on January 1 of each year thereafter by the percentage difference (greater than zero) between the Consumer Price Index for All Urban Consumers (CPI-U) as it is calculated by the United States Bureau of Labor Statistics at the end of the month of July prior to the next year and as it was calculated at the end of the month of July one year earlier. ~~The city water system board of trustees is hereby authorized to periodically amend the fee schedule, by resolution, when a fee increase (or decrease) is required to adequately and appropriately recover the costs reasonably related to the implementation and operation of the liquid waste transportation program. SAWS will periodically perform a cost of service analysis to ensure that the fees charged do not exceed the cost of providing the services.~~

*Amend language as shown in the following section:*

**Sec. 34-525. General provisions.**

- (a) Purpose. The purpose of this division is to aid in the prevention of sanitary sewer blockages and obstructions caused by the accumulation of fats, oils and grease that are discharged into the sanitary sewer system.
- (b) Application. This division shall apply to all food service establishments (FSEs) and food processing establishments (FPEs) that are located within the corporate limits of the City, or that are within the extraterritorial jurisdiction of the City and to all FSEs and FPEs that receive sanitary sewer service from the San Antonio Water System (SAWS) or that discharge any liquids or solids into the publicly owned treatment works (POTW).
- (c) Definitions. As used anywhere in this division, the following terms are defined to mean:

**BMP:** The best management practices to be employed by a FSE or FPE that require (i) prohibiting disposal of fats, oils or grease by pouring any of these substances down a sink or toilet, (ii) posting "No Grease" signs above sinks and in front of dishwashers, (iii) disposing of all food waste by recycling or solid waste removal, (iv) dry wiping pots, pans and dishware to remove fats, oils and grease prior to dishwashing, (v) recycling waste cooking oil, (vi) covering outdoor fats, oils and grease containers, (vii) cleaning kitchen exhaust system filters on a routine and scheduled frequency, (viii) avoiding or limiting the use of garbage disposals, (ix) cleaning interceptors with a capacity of 100 gallons or less weekly or more frequently if needed, (x) using a three (3) compartment sink dishwashing system, (xi) use strainers in sinks to catch food scraps and other solids, (xii) keep a maintenance log on grease interceptor/trap maintenance, and (xiii) training all kitchen staff and employees to implement these BMP.

**BMP fee:** The fee payable by a FSE or FPE to SAWS that is described in Sec. 34-530 (a) (ii) of this division as may be amended by the San Antonio Water System Board of Trustees.



City: The City of San Antonio, a Texas home rule municipality.

Commercial establishment: Any location where a person manufactures, packages, prepares, provides, serves, or makes available any meals, or food for sale, for monetary compensation, or for non-monetary consideration.

Fats, oils, or grease: Any animal, vegetable, or mineral fats, oils, or greases and any organic polar compounds derived from animal and/or plant sources that contain multiple carbon chain triglyceride molecules.

FPE or FPEs: A food processing establishment or establishments, which are any commercial establishments in which food for human consumption is manufactured or packaged.

FSE or FSEs: A food service establishment or establishments, which are any commercial establishments that prepare, provide, serve, or make available for human consumption meals, or any food.

~~General fee: The fee payable by a FSE or FPE to SAWS that is described in Sec. 34-530 (a) (i) of this division as may be amended by the San Antonio Water System Board of Trustees.~~

Interceptor: A device for collecting, containing, or removing food wastes or fats, oils, or grease from a waste stream before entering the POTW.

Person: An individual, partnership, joint venture, firm, company, corporation, association, joint stock company, governmental entity, trust, estate, sole proprietorship, or legal entity of any kind or character.

POTW: The publicly owned treatment works that is comprised of the sanitary sewer system, including treatment plant and collection infrastructure, operated by SAWS.

SAWS: The San Antonio Water System, an agency of the City, created by City Ordinance No. 75686, passed April 30, 1992.

*Replace Sec. 34-530 in its entirety with the following*

**Sec. 34-530. Fees**

- (a) Except as provided in paragraph (c), to recover the costs for the implementation of this division, each SAWS account associated with each FSE and each FPE shall be assessed a fee of \$20.60 per month.
- (b) This fee shall be effective January 1, 2016. These fees shall be adjusted on January 1 of each year thereafter by the percentage difference (greater than zero) between the Consumer Price Index for All Urban Consumers (CPI-U) as it is calculated by the United States Bureau of Labor Statistics at the end of the month of July prior to the next year and

as it was calculated at the end of the month of July one year earlier. SAWS will periodically perform a cost of service analysis to ensure that the fees charged do not exceed the cost of providing the services.

- (c) Notwithstanding paragraphs (a) and (b) above, each account associated with an FSE or FPE being assessed a FOG fee in the amount of \$12.25 per month as of December 31, 2015 shall continue to be assessed \$12.25 per month until December 31, 2016. Effective January 1, 2017, the amount of the FOG fee assessed such accounts shall thereafter be equal to the amount to be assessed all accounts associated with each FSE and each FPE.

**PRIVATE FIRE PROTECTION WATER SERVICE**  
(cf. Sec. 34-127)

Type Nos. 1 and 2 (non-metered) and Type No. 3 (combination meter):

	Minimum Annual Charge	
	<i>Inside City Limits</i>	<i>Outside City Limits</i>
4-inch or smaller service line connection	<del>\$250.00</del> <u>\$274.00</u>	<del>\$325.00</del> <u>\$356.20</u>
6-inch	<del>345.00</del> <u>378.00</u>	<del>450.00</del> <u>493.20</u>
8-inch	<del>420.00</del> <u>460.32</u>	<del>545.00</del> <u>597.32</u>
10-inch	<del>485.00</del> <u>531.56</u>	<del>630.00</del> <u>690.48</u>
12-inch	<del>580.00</del> <u>635.68</u>	<del>755.00</del> <u>827.48</u>

## SCHEDULE E

### SAN ANTONIO WATER SYSTEM SAN ANTONIO, TEXAS

\_\_\_\_\_(Rev. 12/07)

#### INDUSTRIAL WASTE FEE SCHEDULE

Under Article V, Sewage Transportation, Treatment and Disposal, Division 3, Sec. 34-484, et seq.

Effective 12:01 a.m., January 1, 2016

Ordinance No. \_\_\_\_\_ dated \_\_\_\_\_, 2015

<u>Name of Fee</u>	<u>Fee Amount</u>	<u>Unit</u>
Industrial Waste Discharge Permit - Categorical	\$9,000.00 <u>\$13,500.00</u>	Per Five (5) Year Permit with annual pro rata payments
Industrial Waste Discharge Permit - Non-Categorical	\$6,750.00 <u>\$10,125.00</u>	Per Five (5) Year Permit with annual pro rata payments
Sampling Fee - Significant Industrial Users	\$600.00	Per sample of discharge from Significant Industrial User collected under Industrial Pre-Treatment Program
Sampling Fee - Non-Significant Industrial Users	\$5.76 <u>\$10.62</u>	Per month billed to Non-Significant Industrial User under Industrial Pre- Treatment Program

#### Laboratory Testing Fees:

<u>Name of Fee</u>	<u>Fee Amount</u>	<u>Unit</u>
Alkalinity	\$15.00 <u>\$17.22</u>	Per test
Ammonia Direct	\$17.50 <u>\$20.09</u>	Per test
Ammonia Distillation	\$35.00 <u>\$40.17</u>	Per test
Biochemical Oxygen Demand	\$30.00 <u>\$34.43</u>	Per test
Chemical Oxygen Demand	\$31.25 <u>\$35.87</u>	Per test
Conductivity	\$10.00 <u>\$11.48</u>	Per test
Cyanide - Total (with Post Amending)	\$40.25 <u>\$46.20</u>	Per test
Phosphorus - Total	\$22.38 <u>\$25.69</u>	Per test
Total Kjeldahl Nitrogen	\$33.75 <u>\$38.74</u>	Per test

REVISED

<u>Name of Fee</u>	<u>Fee Amount</u>	<u>Unit</u>
	\$13.50	
Total Dissolved Solids	\$15.49	Per test
	\$16.00	
Total Suspended Solids	\$18.36	Per test
	\$12.86	
Turbidity	\$14.76	Per test
	\$19.00	
Escherichia Coli - Present/Absent	\$21.81	Per test
	\$18.00	
Total Coliform - Present/Absent	\$20.66	Per test
	\$18.00	
Fecal Coliform	\$20.66	Per test
	\$25.00	
Fecal Streptococcus	\$28.69	Per test
	\$18.00	
Escherichia Coli - Membrane Filtration	\$20.66	Per test
	\$30.00	
Mercury	\$34.43	Per test
	\$16.00	
Hardness	\$18.36	Per test
	\$28.75	
Hexavalent Chromium	\$33.00	Per test
	\$14.00	
Metals	\$16.07	Per test
	\$55.00	
Fats, Oil and Grease	\$63.13	Per test
	\$15.54	
IC (Nitrite, Sulfate, Chloride, Nitrite/Nitrate Combined, Nitrate, Fluoride)	\$17.84	Per test
	\$170.00	
Organochlorine Pesticides	\$195.12	Per test
	\$194.75	
Organophosphorus Pesticides (8 compounds)	\$223.52	Per test
	\$375.00	
Semi-Volatile Organic Compounds (70 - 110 compounds)	\$430.40	Per test

<u>Name of Fee</u>	<u>Fee Amount</u>	<u>Unit</u>
Total Petroleum Hydrocarbons	\$100.00 <u>\$114.77</u>	Per test
Volatile Organic Compounds - Drinking Water (48 - 84 compounds)	\$112.50 <u>\$129.12</u>	Per test
Volatile Organic Compounds - Waste Water (31 compounds)	\$151.25 <u>\$173.60</u>	Per test

**SCHEDULE F**

LIQUID WASTE HAULER FEE SCHEDULE

Under Article V, Sewage Transportation, Treatment and Disposal, Division 4, Sec. 34-521, et seq.  
Effective 12:01 a.m., January 1, 2016  
Ordinance No. \_\_\_\_\_ dated \_\_\_\_\_, 2015

<u>Name of Fee</u>	<u>Fee Amount</u>	<u>Fee Unit</u>
Liquid Waste Permits and Coupons - Truck Permit	\$304.00 <u>\$333.00</u>	Per annual permit per liquid waste hauling truck
Liquid Waste Permits and Coupons – Truck Permit Reinspection Fee	\$170.00 <u>\$186.00</u>	Per each reinspection of a truck required for the truck to qualify for an annual liquid waste hauling permit
Liquid Waste Permits and Coupons - Manifest Coupon Books	\$40.00 <u>\$43.00</u>	Per manifest book
<u>Disposal Site Fee</u>	<u>\$8.72</u>	<u>Per 100 gallons of disposed waste</u>



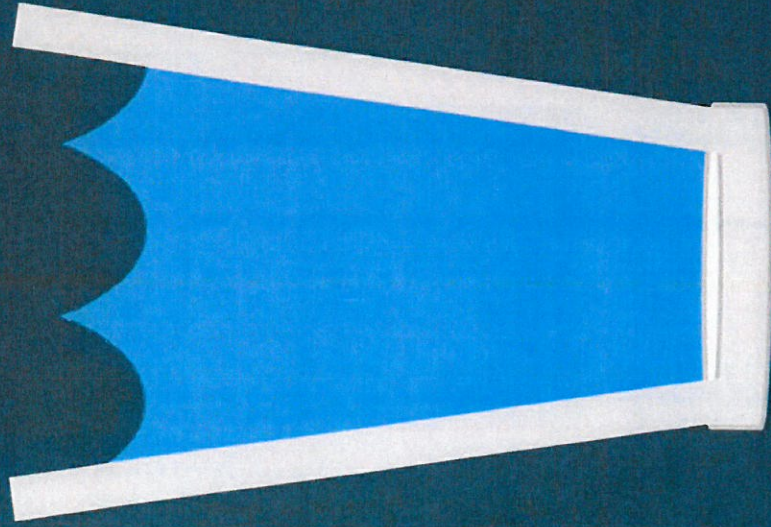
# SAWS Proposed Rate Structure & Rate Adjustments

Presented by  
Ben Gorzell, CFO  
November 19, 2015



# Cost of Service Study

## 3-5 Years



Allocation of Costs to  
Customer Classes

Industry Practices AWWA & WEF

Rate Study Priorities

Independent Consultants  
Black & Veatch

Rate Advisory Committee



# Staff Review Process





# Rate Design Recommendations



## Water Rate Design

Residential  
Lifeline Rate  
2,992 Gallons

Expand  
Residential  
Blocks to 8

Keep  
Multi-Family in  
General Class

Expand  
Irrigation  
Blocks to 4

Reduce  
Wholesale  
Blocks to 2

Consistent Block Differentials  
to Water Delivery and Supply



## Wastewater Rate Design

Maintain  
Minimum of  
1,496 Gallons

2 Block Rate  
for Residential  
Class

Meter-Based  
Availability  
Charge

Wholesale  
Uniform Fixed  
Availability  
Charge

Keep  
Multi-Family in  
General Class

Average  
Winter  
Consumption

Eliminate ICL/OCL & Develop  
Single Wholesale Rate Structure



# Additional Recommendations

Recycled Water Rates  
Increase of 9.6%

Fireline Charges  
Increase of 9.6%

Sewer Surcharges  
Increase of 11.7%

Integrate SAWS & DSP Rate  
Structures by Jan 2017

Improvements to Affordability  
Programs

Irrigation System  
Non-Compliance Fee Adjustments

Special Service Fee Adjustments



# Rate Adjustments

	2016	2017	2018	2019	2020
Water Supply Fee	1.8%	3.2%	1.3%	4.5%	9.9%
Water Delivery & Wastewater	5.7%	4.7%	4.9%	4.2%	3.8%
Total	7.5%	7.9%	6.2%	8.7%	13.7%
	Approved Rate	Rate Plan	Projections		

Expressed as a Percentage of Total Bill Prior to Pass-Through



# Vista Ridge Projected Rate Impact



Expressed as a Percentage of Total Bill Prior to Pass-Through  
These Amounts are Included in the Proposed Rate Plan



# Monthly Bill Impact by Consumption



Total Bill. Includes EAA & TCEQ pass-through fees.  
Excludes Stormwater Fees.



# Monthly Bill Impact General Class

	% of Base	2015		2016	
		Gallons	Rates	Design	Rates
50,000 gallons	100%	50,000	\$376.49	\$363.52	\$391.72
1" meter	125%	62,500	\$465.49	\$451.39	\$486.47
	175%	87,500	\$658.44	\$652.67	\$703.94
200,000 gallons	100%	200,000	\$1,459.66	\$1,416.47	\$1,526.34
2" meter	125%	250,000	\$1,816.12	\$1,767.98	\$1,905.31
	175%	350,000	\$2,587.53	\$2,573.09	\$2,775.17
500,000 gallons	100%	500,000	\$3,680.23	\$3,605.67	\$3,885.74
4" meter	125%	625,000	\$4,571.37	\$4,484.44	\$4,833.19
	175%	875,000	\$6,499.89	\$6,497.21	\$7,007.83

Water, Water Supply, Wastewater and Pass-through Fees



## Conclusions

- Expect actual rate requirements to be less than what is projected in rate plan
- Rate model appropriately conservative
  - Consistent with high bond rating
  - Maintains flexibility

## Recommendations

- Approve Proposed Rate Structure & Other Related Changes
  - 7.5% increase for 2016
  - Rate Plan for 2017-2020
  - Outreach and additional assistance to affordability customers in blocks 4-8
  - Monitor affordability program in relation to rate increases in future
  - Improve customer service business processes
    - Evaluate technology enhancements
  - Focus on water loss



# SAWS Proposed Rate Structure & Rate Adjustments

Presented by  
Ben Gorzell, CFO  
November 19, 2015



# Rate Study Recommendations & Rate Adjustments

Robert Puente

President & Chief Executive Officer

November 19, 2015



San Antonio City Council



## Innovative Successes



- **Largest Direct Recycled System in the US**
- **Largest groundwater based ASR system in US**
- **Largest inland desalination plant under construction**
- **First in US to convert methane gas to energy**
- **Best in the Nation water conservation programs**
- **Highest Credit Rating**

# Water Future – Looking at Past

2000 - Historic Vote for Water Supply Planning

Year	Rate Impact As % of Total Bill
2001	10.6%
2002	9.6%
2003	5.9%
2004	4.7%
2005	5.9%

Cumulative rate adjustments of ~ 37% for Water Supply Fee Alone

Rate Study Recommendations & Rate Adjustments





## Achievements of Water Supply Fee

- **Aquifer Storage & Recovery**
  - \$250 M investment serves as a cornerstone in SAWS water management efforts
- **Recycled Water System**
  - \$100 M investment in the nation's largest purple pipe network
- **Brackish Desalination**
  - Construction of largest inland desalination plant



## Achievements of Water Supply Fee - Continued

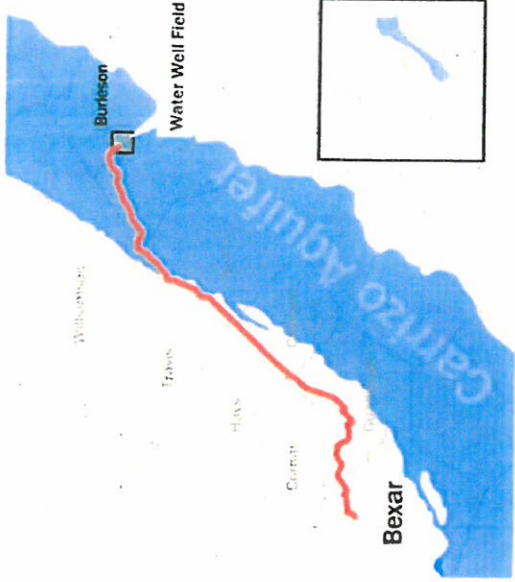
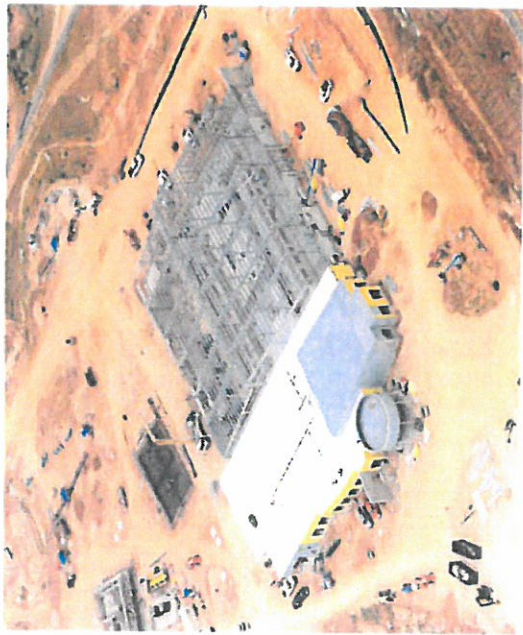
- Canyon Lake
  - “Anchor” customer for regional project
- Trinity Aquifer
  - Source of earliest diversification efforts
- Local Carrizo
  - Integral piece of ASR operation
- Regional Carrizo
  - Partnership with SSLGC





# 2015 – Next Major Step in Future Water Security

- Brackish Desalination  
13,440 AF by 2017
- Vista Ridge  
Up to 50,000 AF by 2020

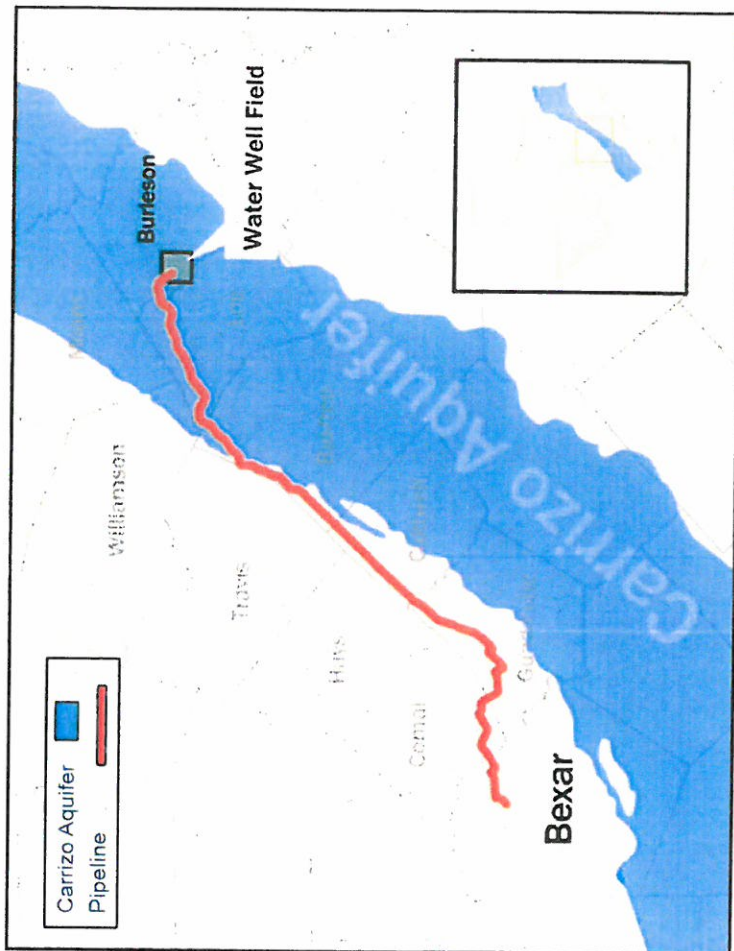




# Vista Ridge Regional Water Project

Unanimous Council Approval of Contract in 2014

- Tomorrow's Water at Today's Price
- Unprecedented Risk-shifting
- Potential Regional Partnerships
- Balanced Planning: Conservation & New Supplies
- Secure Water Future



Rate Study Recommendations & Rate Adjustments



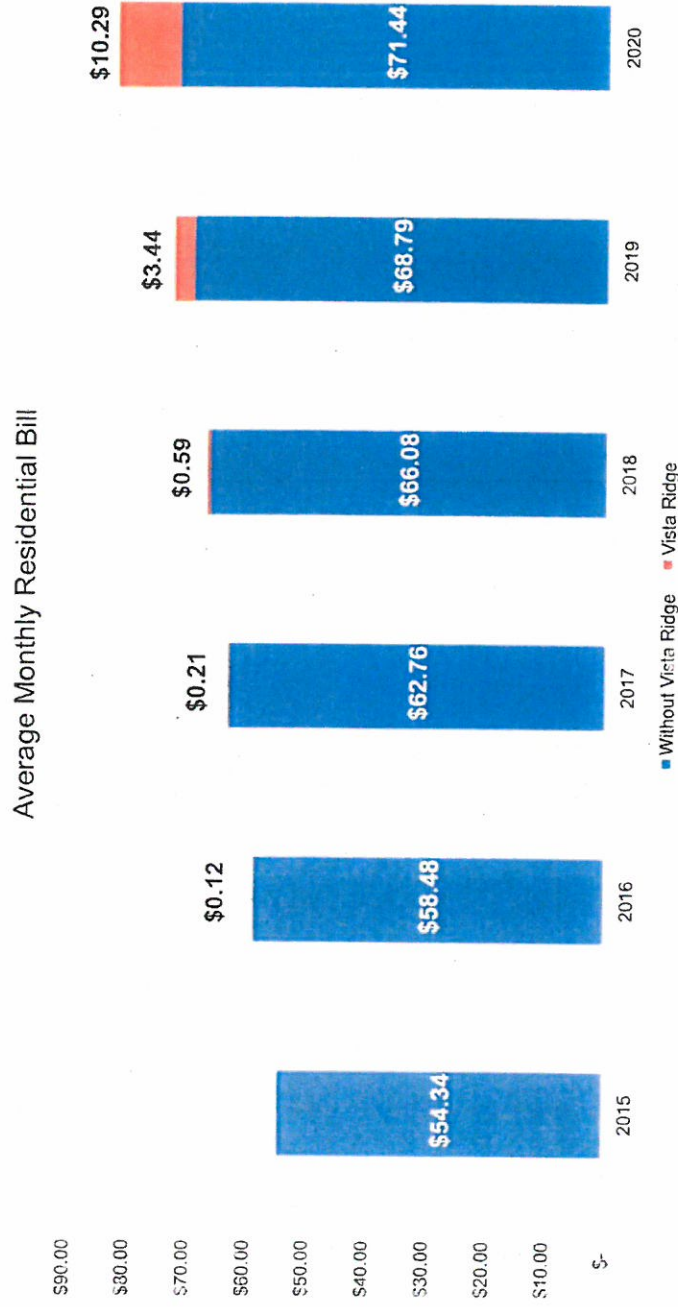
# Vista Ridge - Unprecedented Transparency

- 2014
  - Public Contract Negotiations
  - More than 200 community presentations
- 2015
  - Over 150 public presentations



# Impact of Vista Ridge

2020 Average Bill will be 14.4% higher with Vista Ridge

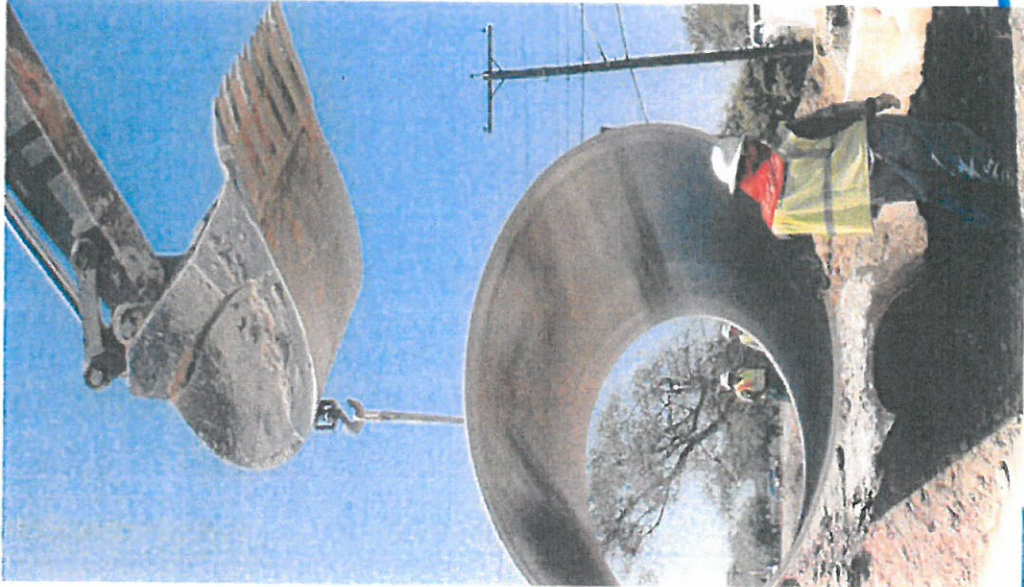




# Rate Adjustment Requirements

Expressed as a Percentage of Total Bill Prior to Pass-Through Charges

	2016	2017	2018	2019	2020
Water Supply Fee	1.8%	3.2%	1.3%	4.5%	9.9%
Wastewater & Water Delivery	5.7%	4.7%	TBD	TBD	TBD
Total	7.5%	7.9%	TBD	TBD	TBD



# Compliance With EPA Consent Decree

Entered by Court October 15, 2013

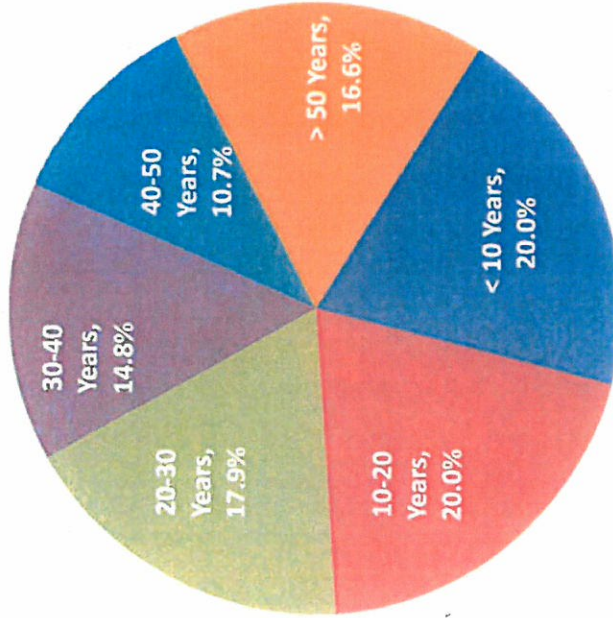
- Agreement with EPA to take necessary actions to reduce SSO's
- Estimated total expenditures of ~ \$1.1 billion
- 10 to 12 year term
- Failure to comply likely to result in fines and penalties



# SAWS Wastewater Collection System

Nearly 900 Miles of Collection Mains are > 50 Years Old

Wastewater System Age of Pipe



\$113.3 M Sewer Main Replacements in 2016

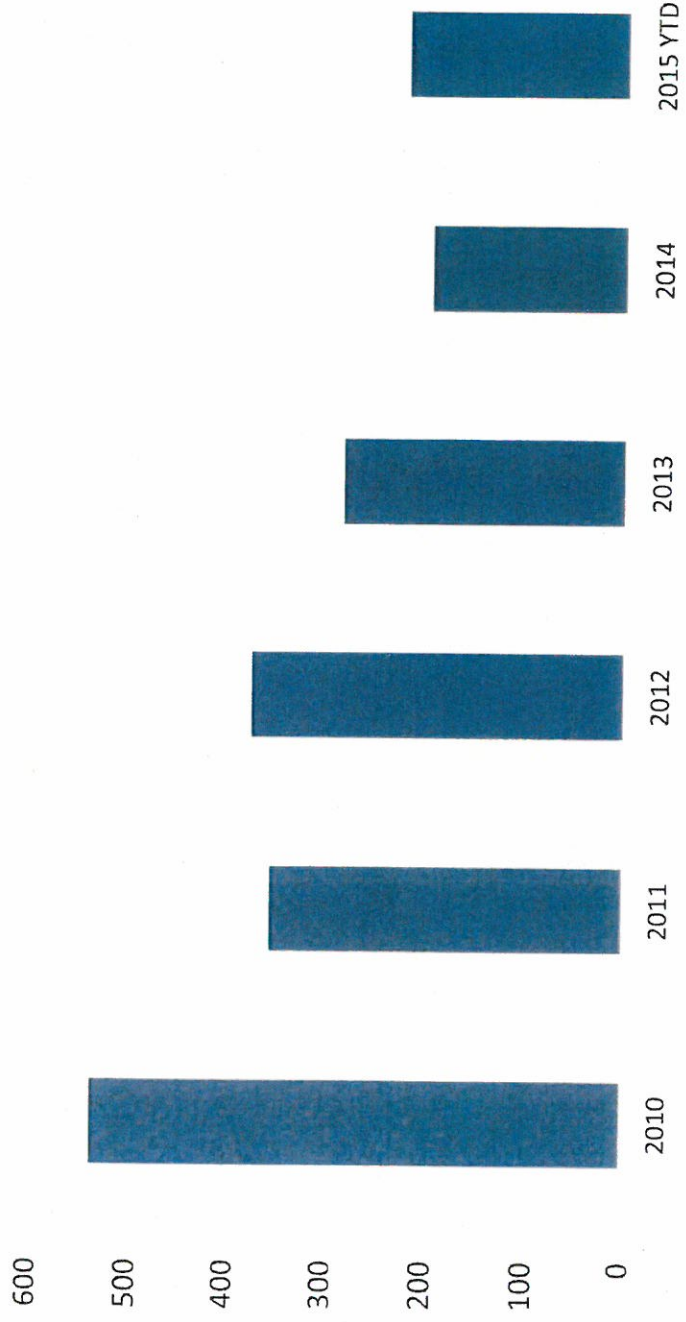
\$116.7 M Sewer Main Replacements in 2017

More than 5,000 miles of sewer main

Rate Study Recommendations & Rate Adjustments

# Sanitary Sewer Overflows

Investment in infrastructure, a proven success



Rate Study Recommendations & Rate Adjustments

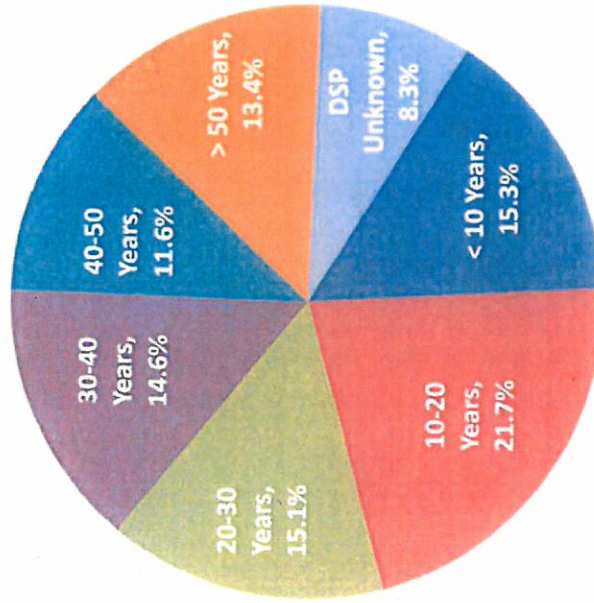




# SAWS Water Distribution System

More Than 900 Miles of Distribution Mains are > 50 Years Old

Water System Age of Pipe



\$32.1 M Water Main Replacements in 2016

\$29.0 M Water Main Replacements in 2017

Nearly 7,000 miles of water main

Rate Study Recommendations & Rate Adjustments

# Partnership for San Antonio's Military Future

Sustainable Affordable Water Service for our Nation's Defense



Rate Study Recommendations & Rate Adjustments



# Rate Advisory Committee

## 14 Public Meetings Over 18 Month Period

Carroll Jackson, RAC Chairman	
John Davis – District 1	Larry Underwood – District 6
James McNamara – District 2	Mario Hune – District 7
Roberto Anguiano – District 3	Ken Lawrence – District 8
Mark Guerrero – District 4	Michael Moore – District 9
Daniel Meza – District 5	Allison Cohen – District 10
Jorge Garcia – Recycled Water	Howard Peak – At Large
Allyson McKay – Apartment Assoc.	Manuel Pelaez-Prada – Business Community
Gerardo Noriega – Greater Edwards Aquifer Alliance	Mark Perry – Wholesale Customer



# Maintain Affordable Rates

## Affordability Discount Program



Poverty Level	2015 Bill Discount	2016 Bill Discount	% of Average Bill
50%	\$ 14.35	\$ 18.00	31%
75%	\$ 10.04	\$ 12.60	22%
100%	\$ 7.18	\$ 8.25	14%
125%	\$ 5.72	\$ 6.55	11%

Based on 7,788 gallons water/6,178 gallons sewer usage



# Affordability Program

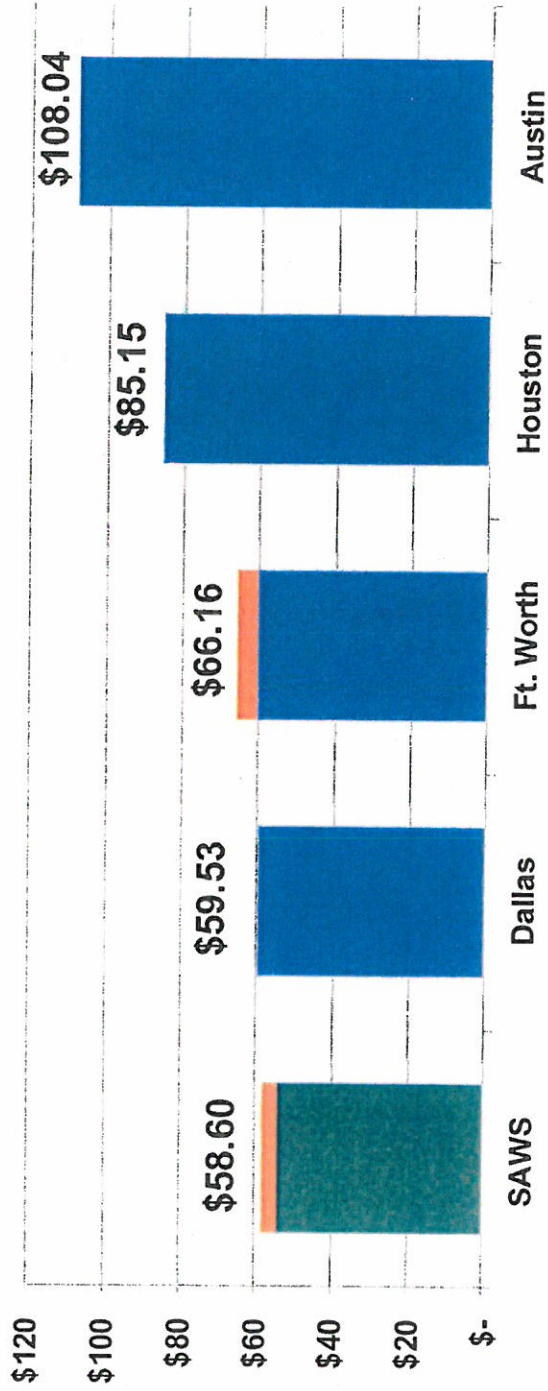
Keep the Water On for our community

- Payment Assistance
  - Affordability Discount
    - Nearly \$2 million assistance provided YTD
  - Project Agua
    - Nearly \$200,000 YTD
- Fee waivers
- Courtesy Programs
- Payment Arrangements



# Average Water & Sewer Residential Bills

SAWS Remains the Lowest of the Five Largest Cities in Texas





# Rate Study Recommendations & Rate Adjustments

Robert Puente

President & Chief Executive Officer



November 19, 2015

San Antonio City Council

