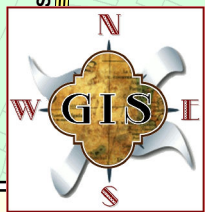
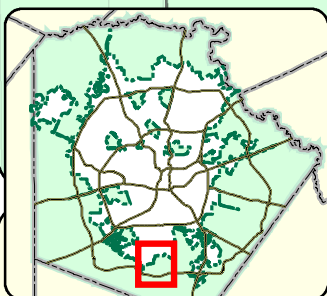
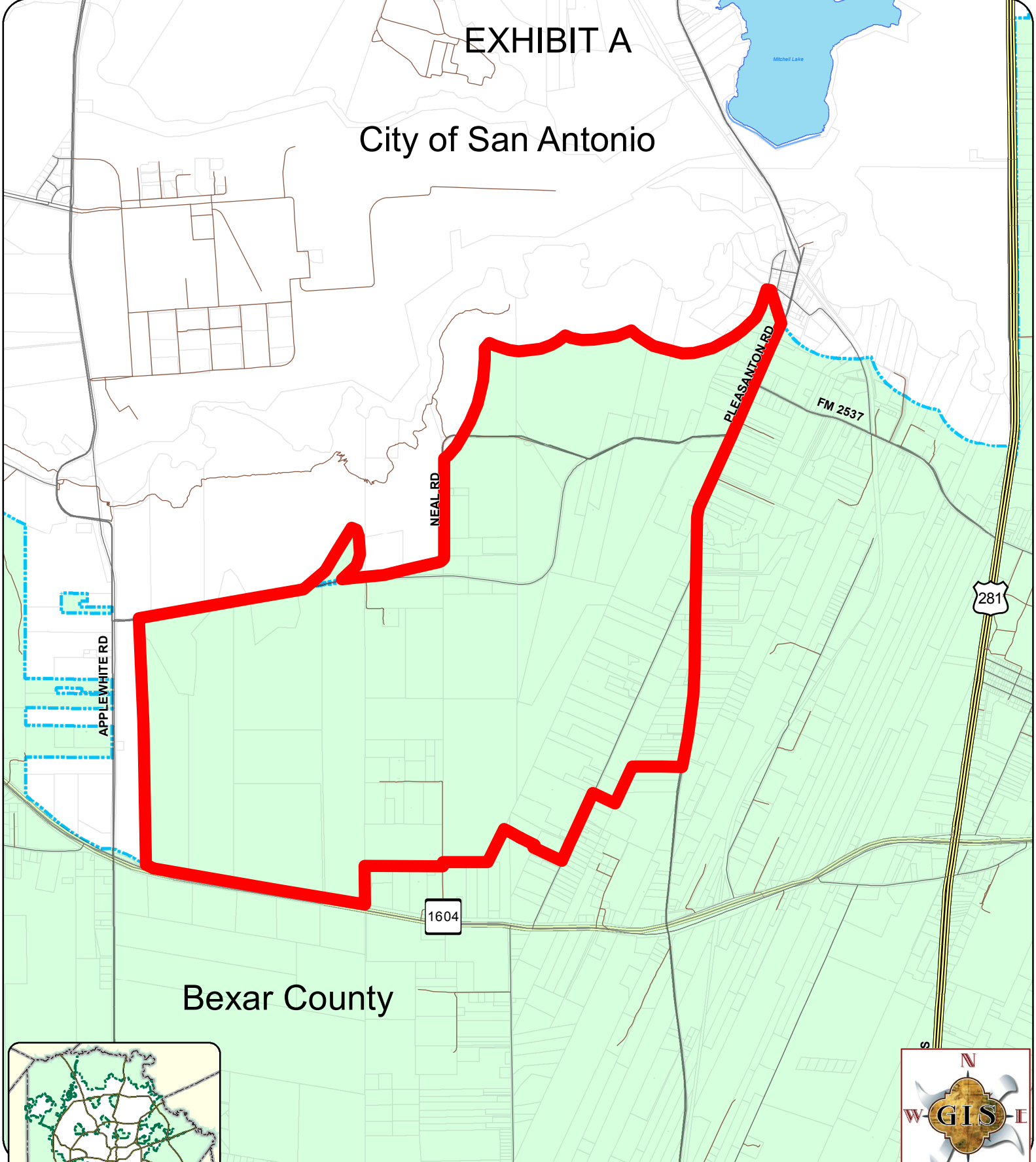


# EXHIBIT A

## City of San Antonio

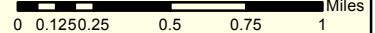
## Bexar County



- Neal Road Proposed Annexation Boundary
- City of San Antonio
- BCAD 2016 Parcels
- Bexar County

Total parcels 173

Total Acres - 3758.67 (5.87 Sq. Miles)



### 2017 City of San Antonio Neal Road Annexation Area

**City of San Antonio**  
Information Technology Services Department  
GIS Public Service Unit  
Riverview Towers  
111 Soledad St, 9th Floor, Suite 900  
San Antonio, TX 78205

Data Source: City of San Antonio Enterprise GIS, Bexar Metro 911, Bexar Appraisal District  
\*This Geographic Information System Product, received from the City of San Antonio is provided "as is" without warranty of any kind, and the City of San Antonio expressly disclaims all express and implied warranties, including but not limited to the implied warranties of merchantability and fitness for a particular purpose. The City of San Antonio does not warrant, guarantee, or make any representation regarding the use, or the results of the use, of the information provided to you by the City of San Antonio in terms of timeliness, accuracy, reliability, completeness, or otherwise.  
The entire risk as to the results and performance of any information obtained from the City of San Antonio is expressly assumed by the recipient.  
\*\*Please contact the responsible City of San Antonio Department for specific determinations.  
Maps may be ordered at: (210) 207-7933  
Map Path: Y:\common\misc\29\GIS\Pin50\plan\_ibl\Projects\2017\Planning\NealRdProposedAnnexArea\_04212017.mxd  
Date/Time Saved: 04/21/17 at 4:26:13 PM  
PDF Filename: NealRdProposedAnnexArea\_04212017.pdf