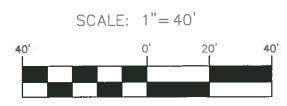


P-163E-1  
 PERMANENT  
 EASEMENT  
 REQUIRED  
 (COSA TO SARA)  
 (APPROX. 290 SF)

P-164E-2  
 PERMANENT  
 EASEMENT  
 REQUIRED  
 (COSA TO SARA)  
 (APPROX. 1,465 SF)

PROJECT  
 LIMITS



JOB NO. 8134-01  
 DATE AUG 2016  
 DESIGNER SD  
 CHECKED SD DRAWN JM  
 SHEET 1 of 1

**SAN PEDRO CREEK IMPROVEMENTS**  
 SAN ANTONIO, TEXAS  
 PERMANENT EASEMENT- CITY OF SAN ANTONIO

**P D PAPE-DAWSON ENGINEERS**  
 SAN ANTONIO | AUSTIN | HOUSTON | FORT WORTH | DALLAS  
 2900 HWY LOOP 416 | SAN ANTONIO, TX 78213 | 214.375.9999  
 TYPE: FIRM REGISTRATION 6476 | TYPE: FIRM REGISTRATION 61666666