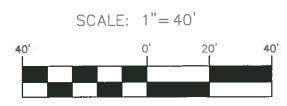


P-163E-1
 PERMANENT
 EASEMENT
 REQUIRED
 (COSA TO SARA)
 (APPROX. 290 SF)

P-164E-2
 PERMANENT
 EASEMENT
 REQUIRED
 (COSA TO SARA)
 (APPROX. 1,465 SF)

PROJECT
 LIMITS



JOB NO. 8134-01
 DATE AUG 2016
 DESIGNER SD
 CHECKED SD DRAWN JM
 SHEET 1 of 1

SAN PEDRO CREEK IMPROVEMENTS
 SAN ANTONIO, TEXAS
 PERMANENT EASEMENT- CITY OF SAN ANTONIO

P D PAPE-DAWSON ENGINEERS
 SAN ANTONIO | AUSTIN | HOUSTON | FORT WORTH | DALLAS
 2900 HWY LOOP 416 | SAN ANTONIO, TX 78213 | 214.375.9999
 TYPE: FIRM REGISTRATION 6476 | TYPE: FIRM REGISTRATION 61666666