

# **First Public Hearing regarding the U.S. 281 North Corridor Annexation Area**

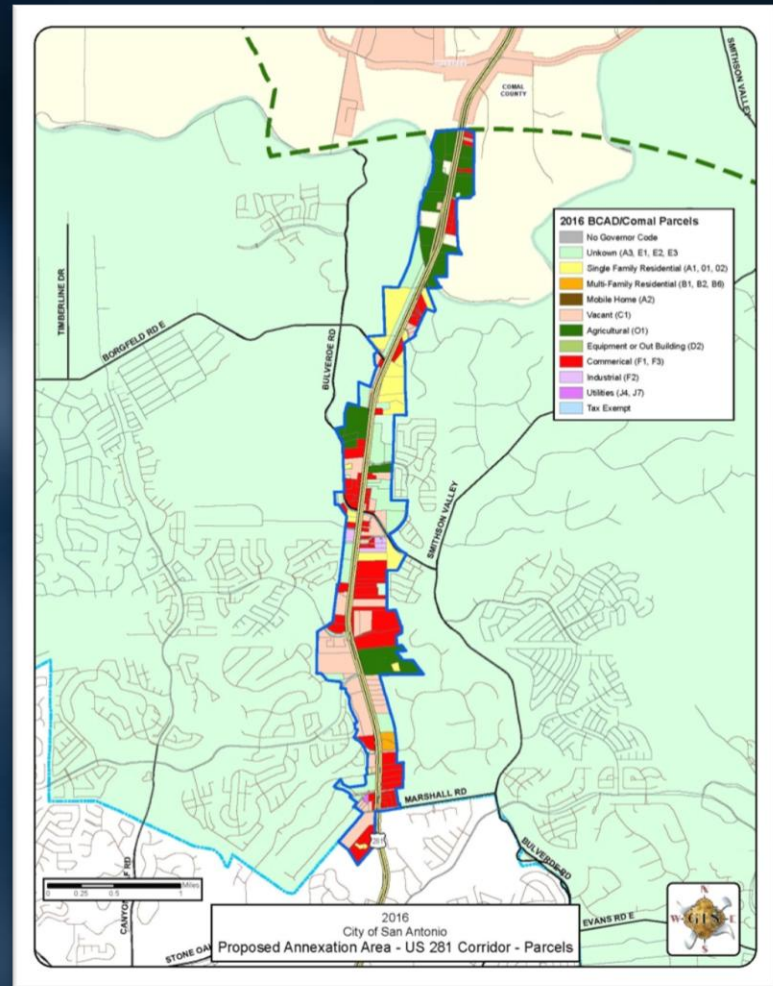
**City Council Agenda Item #**

**November 2, 2016**

**Planning & Community Development**

# US 281 North Corridor

- Just under 2 sq. miles/minimum of 1,000 ft. in width
- Exempted from three-year annexation plan because contains fewer than 100 separate residential tracts
- Population approximately 400
- Includes 18 single family residential parcels



# 281 North Corridor Overview

## AREA DETAILS

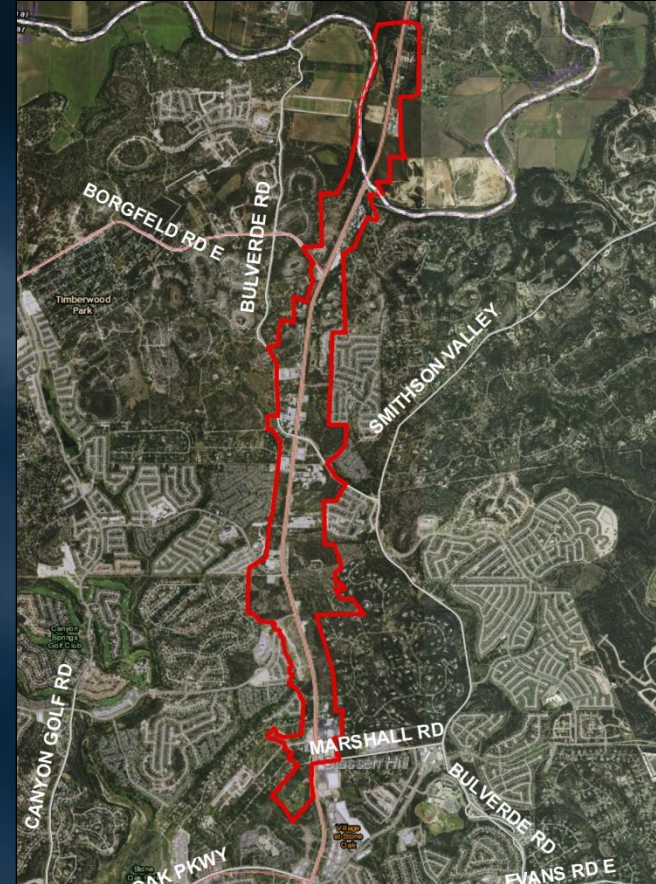
	Year 1	Year 20
Area in Sq. Miles	1.9	1.9
Population	372	1,932
Residential Homes	18	18
Multifamily Acres	10	58
Commercial Acres	275	795

## EXISTING PROPERTY VALUES

Average Home Value	Multifamily Value Per Acre	Commercial Value Per Acre
\$873,833	\$2,311,110	\$353,375

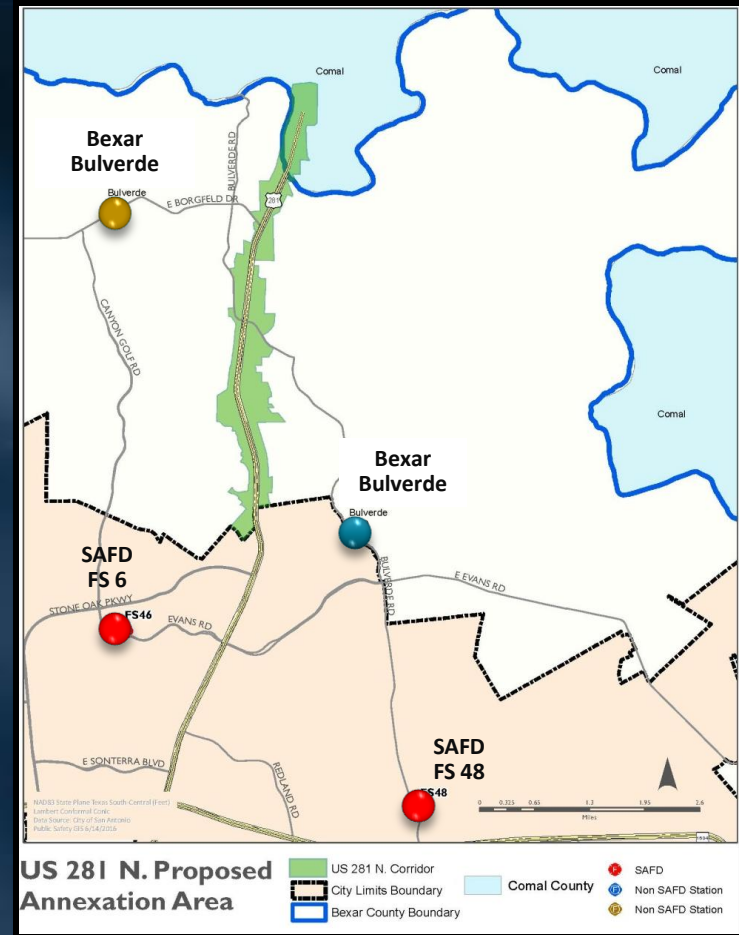
# Annexation Requirements

- State Law requires cities to:
  - Hold 2 Public hearings
  - Prepare “Service Plan” before public hearings



# Public Safety Services

- First Response Fire Service through Bexar/Bulverde Fire Dept
  - City currently negotiating agreement
- City to provide all EMS Transport
- 7 SAPD Officer positions added to provide law enforcement



# Timeline

2016 Dates	Annexation Procedures
Oct. 12	Planning Commission Public Hearing
Oct. 18	Zoning Commission on recommended zoning
Nov. 1	Publish ordinance in San Antonio Express News
Nov. 2	<b>First City Council Public Hearing</b>
Nov. 9	<b>Second City Council Public Hearing</b>
Dec. 1	City Council considers Annexation Ordinance and approves Fire Service Agreement
Dec. 31	Area brought into City limits