



PARKS & RECREATION
SAN ANTONIO

Edwards Aquifer Protection Program Conservation Easement Acquisitions

City Council

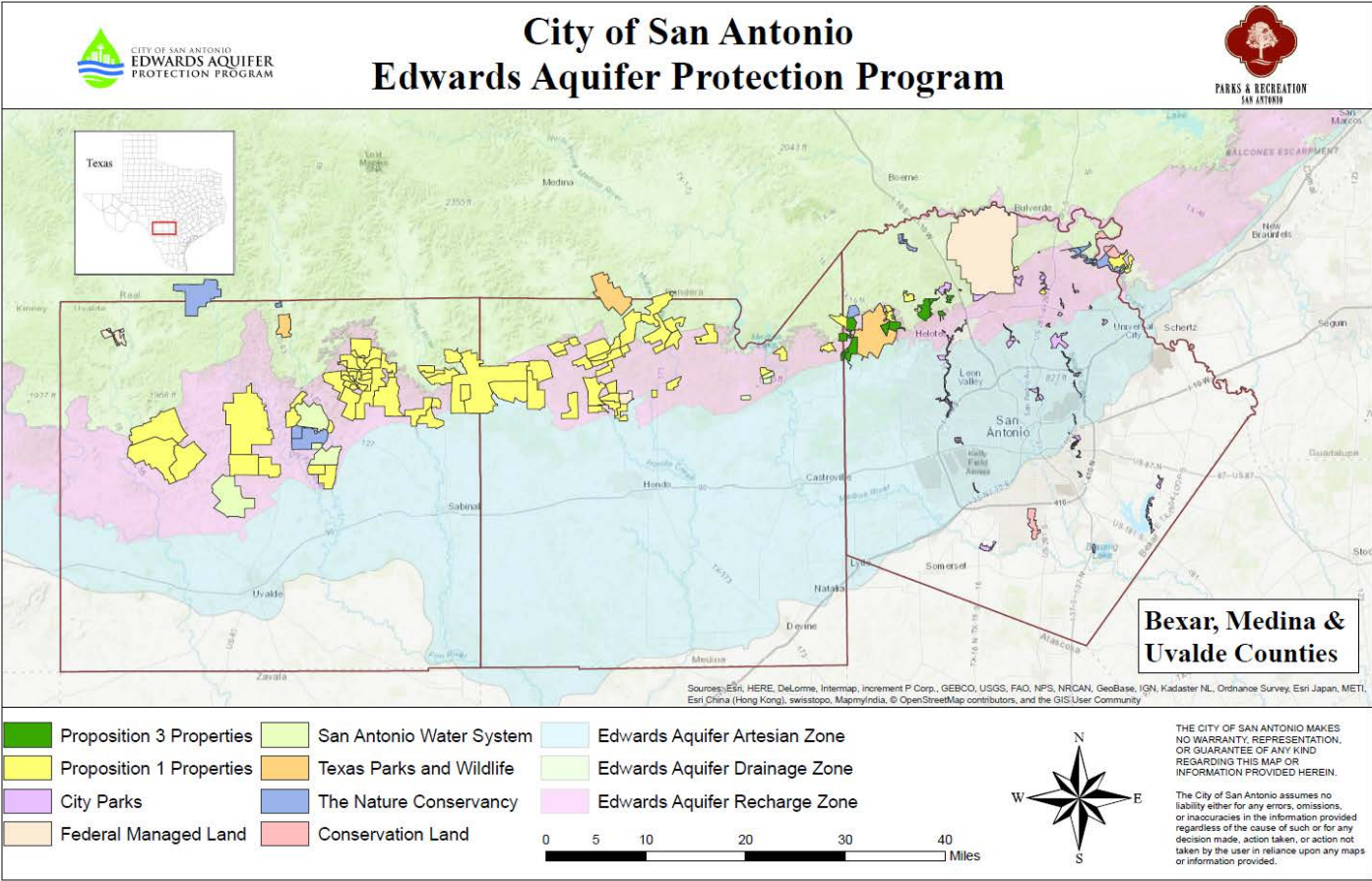
September 21, 2017

Parks and Recreation Department

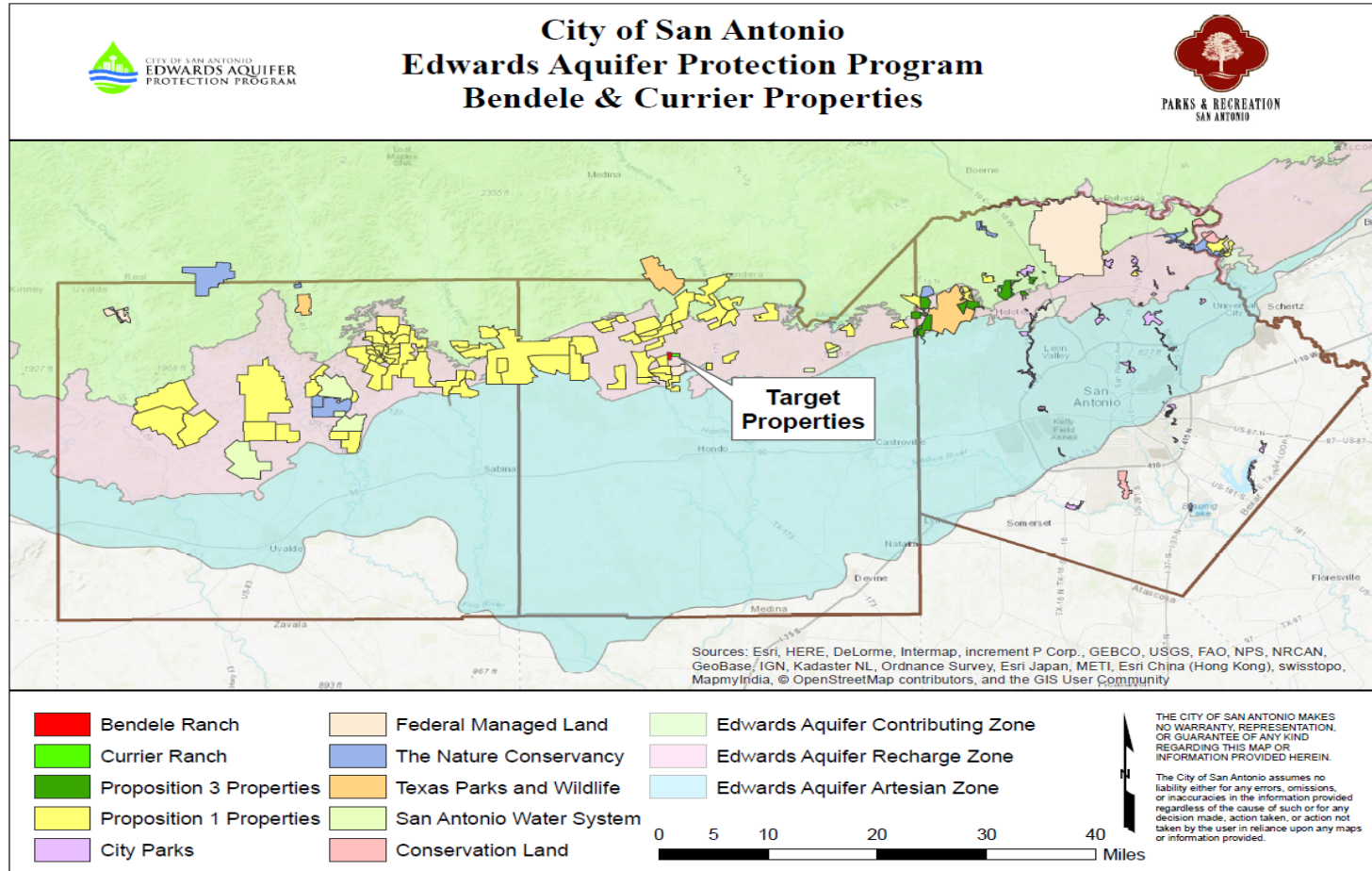
Bendele & Currier Ranches

- Bendele Ranch
 - 176.35 acre conservation easement acquisition
 - Acquisition cost - \$242,665.35
- Currier Ranch
 - 191.81 acre conservation easement acquisition
 - Acquisition cost - \$267,800.20
- 72nd and 73rd conservation easements under the Proposition 1 program

Total Land Protected = 147,782 acres

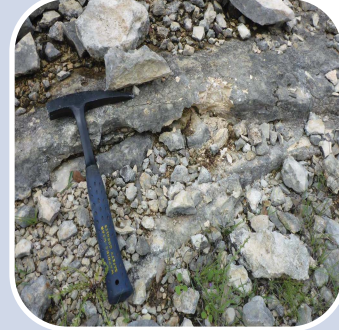


Increases Protected Lands by 368 acres



Acquisition Benefits

- Both properties located over the Recharge Zone
- Important recharge features on property
- High water quantity and water quality benefits
- Results in cumulative protection of over 50,000 acres in Medina County



Recommendation

- **Staff recommends approval**