



PARKS & RECREATION  
SAN ANTONIO

# Edwards Aquifer Protection Program

## Conservation Easement Acquisitions

City Council

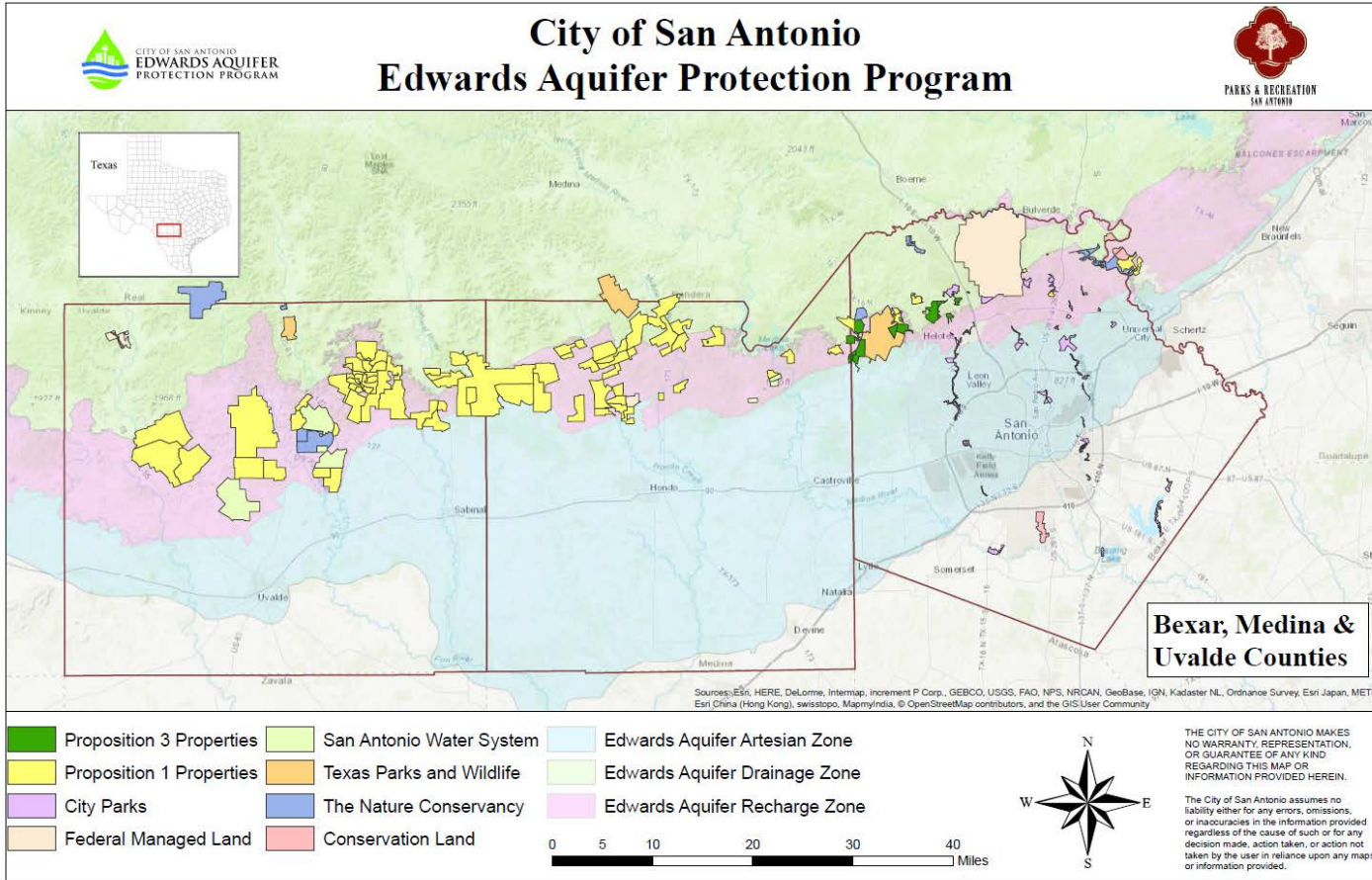
October 12, 2017

Parks and Recreation Department

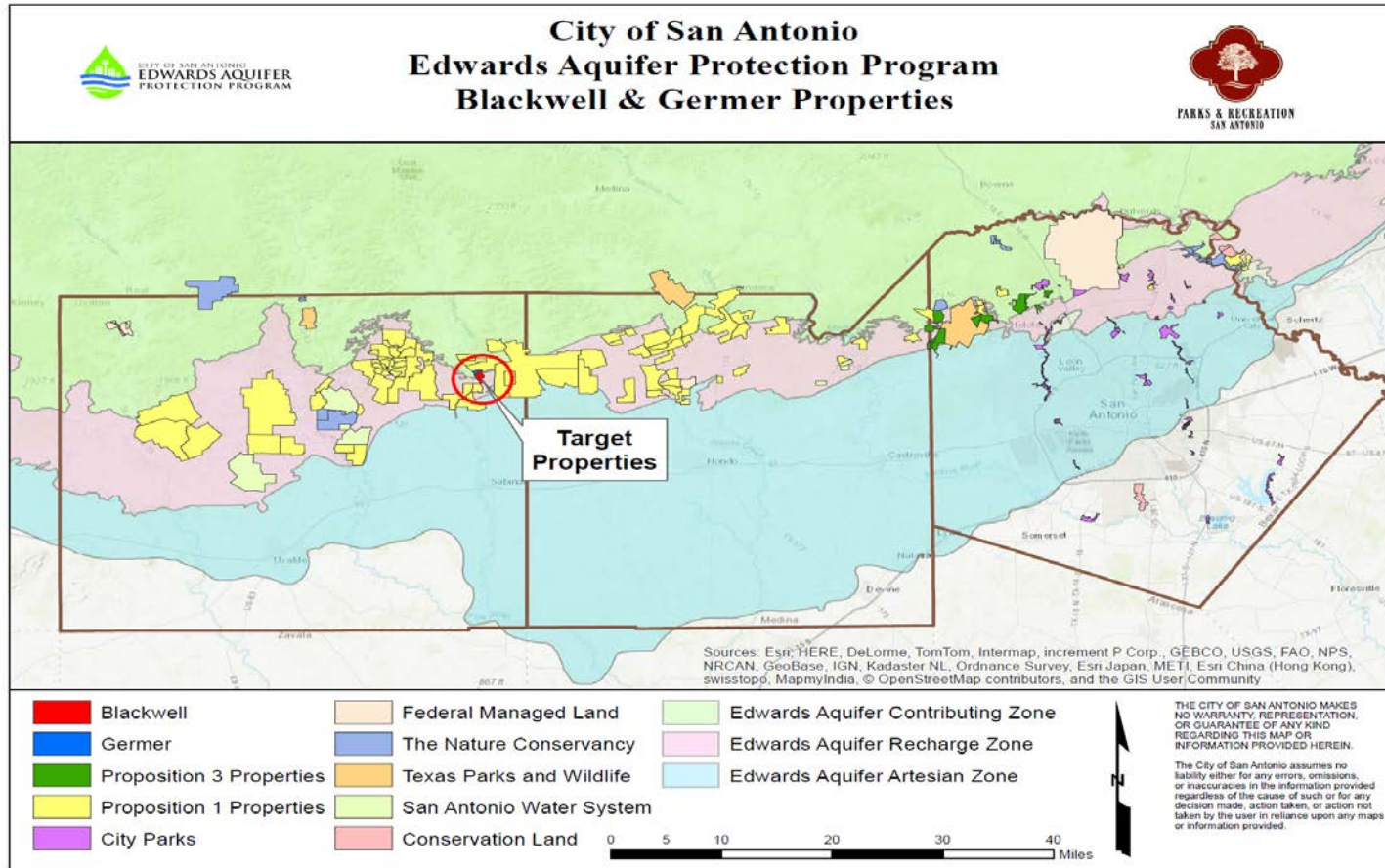
# Blackwell & Germer Ranches

- Blackwell Ranch
  - 412.43 acre conservation easement acquisition
  - Acquisition cost - \$751,789.35
- Germer Ranch
  - 129.7 acre conservation easement acquisition
  - Acquisition cost - \$275,393.80
- 74<sup>th</sup> and 75<sup>th</sup> conservation easements under the EAPP

# Total Land Protected = 148,150 acres

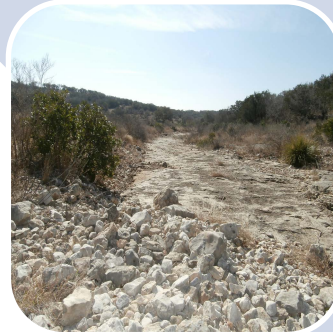


# Increases Protected Lands by 542 acres



# Acquisition Benefits

- Properties located over the Recharge and Contributing Zones
- Important recharge features on property
- High water quantity and water quality benefits
- Results in cumulative protection of over 80,000 acres in Uvalde County



# Recommendation

An aerial photograph of a rural property. In the upper left, there are several buildings, including a large, weathered wooden structure and a smaller, more modern-looking building. The property is surrounded by dense green trees and vegetation. A large, dark green pond occupies the lower right portion of the image. The water in the pond is still, reflecting the surrounding greenery. The overall scene is a mix of natural landscape and human-made structures.

- **Staff recommends approval**