

RESOLUTION NO. 14-01-06

RECOMMENDING TO APPROVE AN AMENDMENT TO THE MAJOR THOROUGHFARE PLAN, A COMPONENT OF THE CITY OF SAN ANTONIO MASTER PLAN BY REALIGNING A PROPOSED SEGMENT OF THE NORTH/SOUTH CONNECTOR, A SECONDARY ARTERIAL TYPE A REQUIRING 86 FEET OF RIGHT-OF-WAY, BETWEEN POTRANCO ROAD AND MARBACH ROAD ON THE MAJOR THOROUGHFARE PLAN, AND REALIGNING A PROPOSED SEGMENT OF MARBACH ROAD, A SECONDARY ARTERIAL TYPE A REQUIRING 86 FEET OF RIGHT-OF-WAY, ON THE MAJOR THOROUGHFARE PLAN BETWEEN GROSENBACHER ROAD AND HIGHWAY 211, GENERALLY LOCATED IN WEST BEXAR COUNTY.

WHEREAS, the Planning Commission is charged by the City Charter with the responsibility to make, amend, extend, and add to the City of San Antonio Master Plan for the physical growth and development of the City; and

WHEREAS, the City of San Antonio Major Thoroughfare Plan was adopted on September 21, 1978 by City Council as a component of the City of San Antonio Master Plan; and

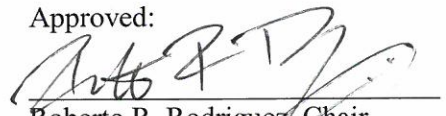
WHEREAS, the Planning Commission held public hearings on December 4 and 18, 2013 and January 8, 2014, allowing all interested citizens to be heard.

NOW, THEREFORE, BE IT RESOLVED BY THE PLANNING COMMISSION OF THE CITY OF SAN ANTONIO:

SECTION 1: The amendment to the Major Thoroughfare Plan, a component of the Master Plan of the City, to realign a proposed segment of the North/South Connector, a Secondary Arterial Type A requiring 86 feet of right-of-way, between Potranco Road and Marbach Road on the Major Thoroughfare Plan, and to realign a proposed segment of Marbach Road, a Secondary Arterial Type A requiring 86 feet of right-of-way, on the Major Thoroughfare Plan between Groesenbacher Road and Highway 211, generally located in west Bexar County, is herein approved and recommended to the City Council for adoption. The Amendment is more particularly described in **Attachment "I,"** attached hereto and incorporated herein for all purposes.

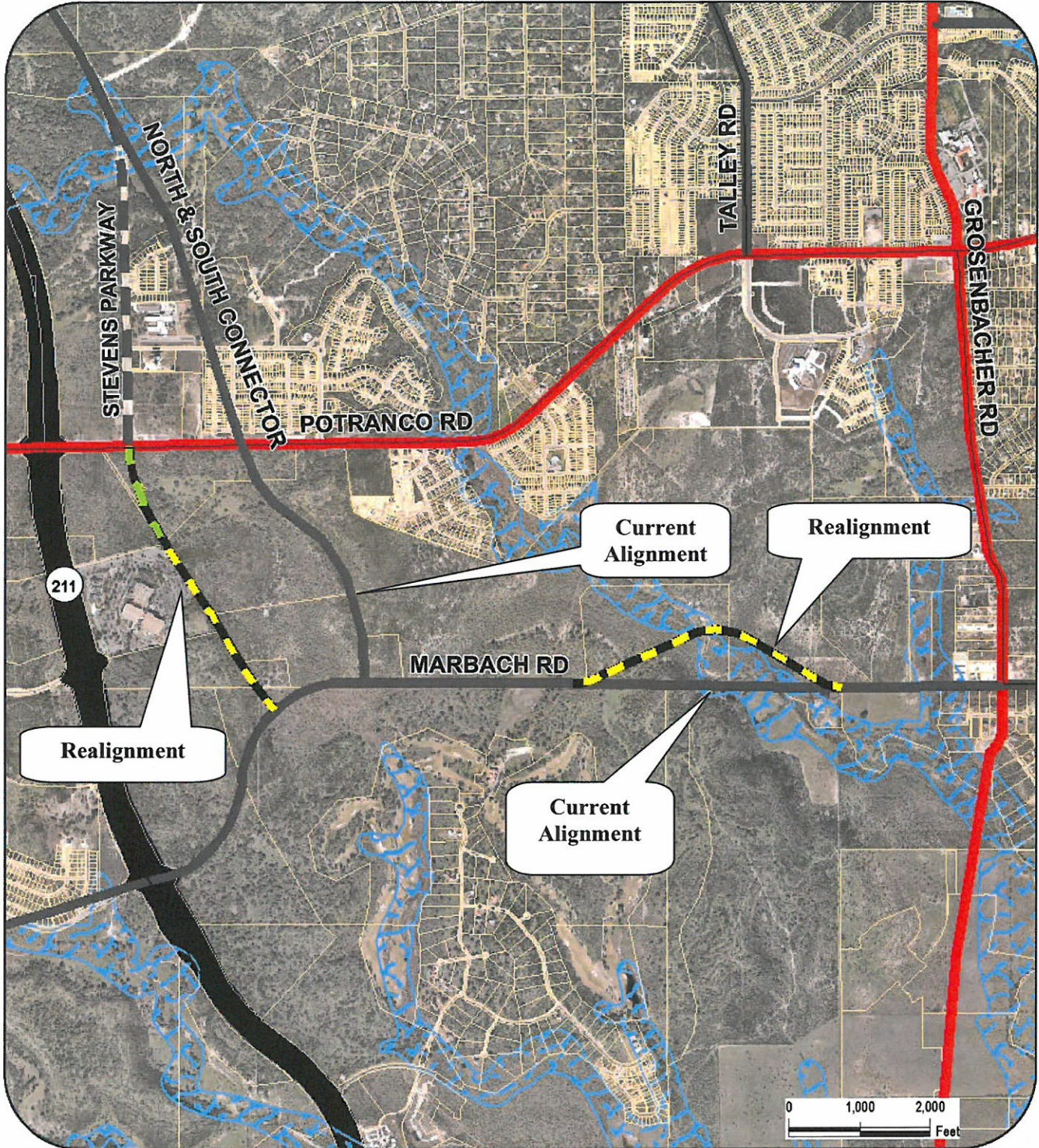
PASSED AND APPROVED ON THIS 8th DAY OF JANUARY 2014.

Approved:


Roberto R. Rodriguez, Chair
San Antonio Planning Commission

Attest:


Executive Secretary
San Antonio Planning Commission



	Staff Recommended	Primary Arterial Type A 120'	
	Staff Recommended and Applicant Requested	Secondary Arterial Type A 86'	
	Freeway 250' - 500'; Freeway	Flood Plains	

Data Source: City of San Antonio Enterprise GIS, Bear Mtn 911, Bear Approval District
 This map was prepared by the City of San Antonio Planning and Community Development Department. It is not intended to be used for any other purpose. The City of San Antonio Planning and Community Development Department is not responsible for any errors or omissions on this map. The City of San Antonio Planning and Community Development Department is not responsible for any errors or omissions on this map. The City of San Antonio Planning and Community Development Department is not responsible for any errors or omissions on this map.

**Major Thoroughfare
 Plan Amendments 13002
 Marbach Road & North/South Connector**

City of San Antonio Planning and Community Development Department
 Planning and Community Development Department
 1000 N. Nueces Street
 San Antonio, TX 78202