

PARCEL "D"
3.66 ACRES

CITY PARKLAND REQUIREMENT
MF 33 - 1 ACRE PER 14 UNITS
348 UNITS = 3.05 ACRES

CLUB BUILDING = 1.0
3,500 S.F.

POOL AREA
1,500 S.F. POOL = .9

PLAYGROUND
2 AREAS = 1.25

TOTAL AREA = 3.15

PARCEL "E"
1,205 ACRES

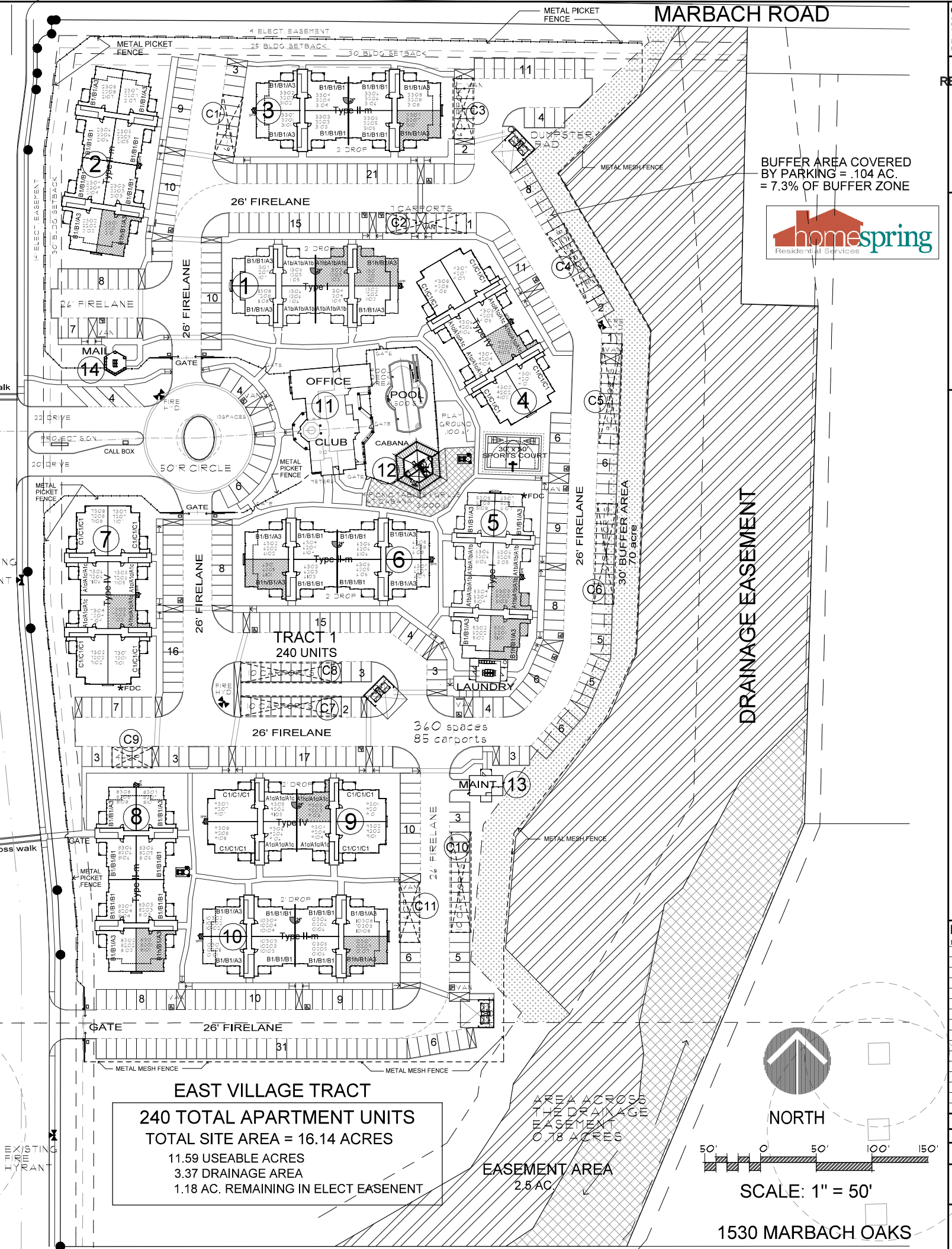
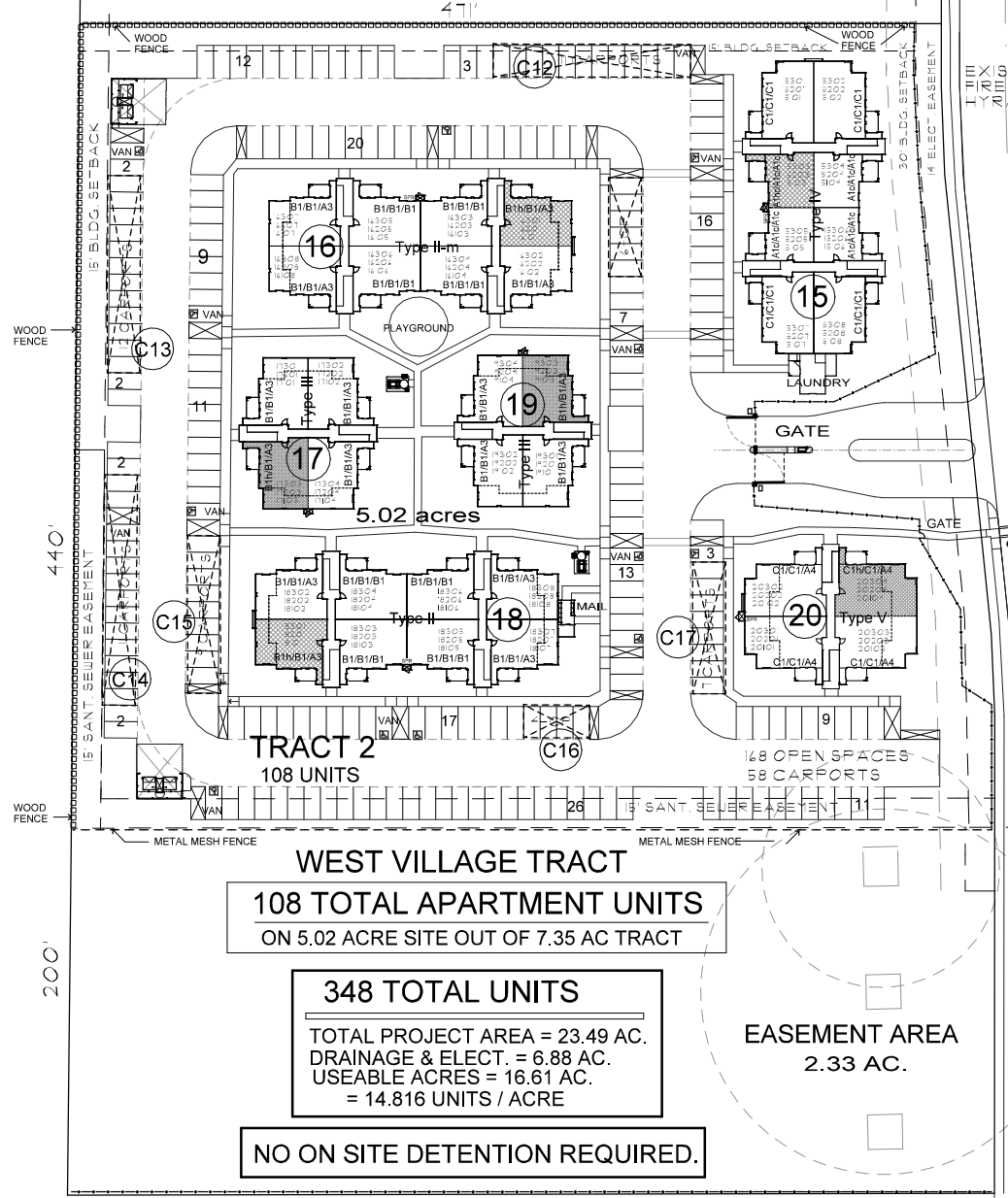
PARKING TABULATION

497 - OPEN SPACES
143 - CARPORTS
16 - HC SPACES
15 - VAN SPACES
671 - TOTAL SPACES

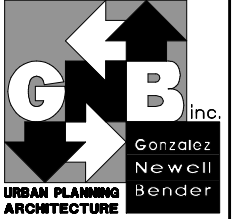
CITY PARKING REQUIREMENT

15 SPACES / UNIT (MIN) = 522 SPACES
2.0 SPACES / UNIT (MAX) = 676 SPACES
HAVE - 471 SPACES = 1,428 SPACES/UNIT

UNIT TYPE / RENTABLE AREA	BUILDING NUMBER / BUILDING TYPE																				TOTAL # OF UNITS
UNIT TYPE & RENTABLE SQ. FT.	BLDG. # 1	BLDG. # 2	BLDG. # 3	BLDG. # 4	BLDG. # 5	BLDG. # 6	BLDG. # 7	BLDG. # 8	BLDG. # 9	BLDG. # 10	BLDG. # 15	BLDG. # 16	BLDG. # 17	BLDG. # 18	BLDG. # 29	BLDG. # 20	TOTAL # OF UNITS				
ONE BEDROOM UNITS	TYPE - I	TYPE - II	TYPE - II	TYPE - IV	TYPE - I	TYPE - II	TYPE - IV	TYPE - IV	TYPE - IV	TYPE - II	TYPE - IV	TYPE - II	TYPE - II	TYPE - II	TYPE - II	TYPE - V					
A1b -- 754 S.F.	12																24				
A1b-h -- 754 S.F.																	0				
A1c -- 754 S.F.				10				10		10							40				
A1c-h -- 754 S.F.				2				2		2							8				
A3b -- 756 S.F.	4	4	4		4	4		4	2	4		4	4	4	4		44				
A4c -- 762 S.F.																4	4				
2 BEDROOM / 2 BATH																	120 - 1 BEDROOMS = 34.5%				
B1 -- 981 S.F.	7	19	19		7	19		19		19		19	6	6	19		159				
B1h -- 981 S.F.	1	1	1		1	1		1		1		1	2	2	1		13				
3 BEDROOM / 2 BATH																	172 - 2 BEDROOMS = 49.5%				
C1 -- 1,178 S.F.				11				11		11							52				
C1h -- 1,178 S.F.				1				1		1							4				
																	56 - 3 BEDROOMS = 16%				
GRAND TOTALS	24	24	24	24	24	24	24	24	24	24	24	12	12	24	12		348 TOTAL UNITS				



NOT FOR REGULATORY APPROVAL PERMITTING OR CONSTRUCTION AND GNB RESERVES THE RIGHT TO MODIFY THE DESIGN WITHOUT NOTICE



1630 LOCKHILL SELMA ROAD
San Antonio, Texas 78213
(210) 692-0331 - Fax (210) 692 3579

Medio Springs Ranch

APARTMENTS

BEXAR COUNTY NEAR SAN ANTONIO, TEXAS

ISSUE:

No.	Date	Description
1	4/17/17	NOTION TO PROCEED TO CD

Contract Date: 04/17/08
Project No.: 374-0198
Drawn By: CAD file
ABS / Hogan/Medio Springs/140-Sch
Sheet Title: ARCHITECTURAL SITE PLAN
Sheet Number: AS-1

