

200' Notification Area



Low Density Residential



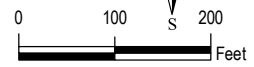
High Density Mixed Use



Medium Density Residential



Proposed Regional Commercial



Data Source: City of San Antonio Enterprise GIS, Bexar Metro 911, Bexar Appraisal District  
 "The Geographic Information System Product, received from The City of San Antonio is provided "as is" without warranty of any kind, and the City of San Antonio expressly disclaims all express and implied warranties, including but not limited to the implied warranties of merchantability and fitness for a particular purpose. The City of San Antonio does not warrant, guarantee, or make any representations regarding the use, or the results of the use, of the information provided to you by the City of San Antonio in terms of correctness, accuracy, reliability, timeliness or otherwise. The entire risk as to the results and performance of any information obtained from the City of San Antonio is entirely assumed by the recipient."

\*Please contact the responsible City of San Antonio Department for specific determinations.\*  
 Maps may be ordered at: (210) 207-8301  
 Map Created by: Gustavo Gutierrez  
 Map Creation Date: 6/9/2015  
 Map File Location: W:\Archived\Neighborhoods\Land\_Use\Amendments\Amend\_18070\_ArenaDistrict\_B&W.mxd  
 PDF Filename: Amend\_18070\_ArenaDistrict\_B&W.pdf

# Arena District/ Eastside Community Plan

## Proposed Plan Amendment 18070 Area

City of San Antonio  
 Planning and Community  
 Development Department  
 John M. Dugan, AICP  
 Director  
 Cliff Motton Development and  
 Business Services Center  
 PO Box 839966  
 San Antonio, TX 78283

