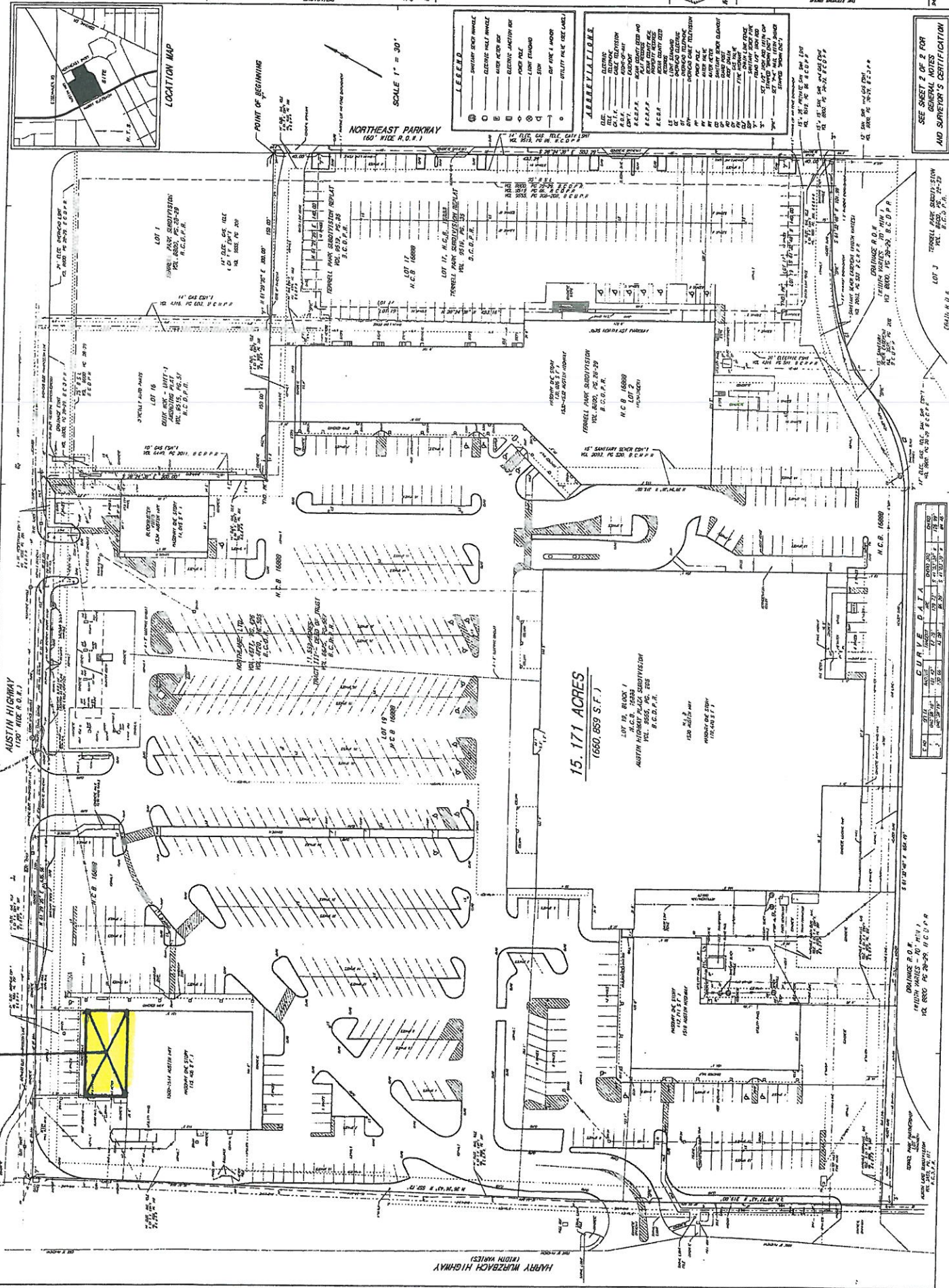


1502 Austin Hwy.



REVISIONS

NO.	DATE	DESCRIPTION
1	10/1/78	PRELIMINARY
2	10/1/78	REVISED PER CITY COMMENTS
3	10/1/78	REVISED PER CITY COMMENTS
4	10/1/78	REVISED PER CITY COMMENTS
5	10/1/78	REVISED PER CITY COMMENTS
6	10/1/78	REVISED PER CITY COMMENTS
7	10/1/78	REVISED PER CITY COMMENTS
8	10/1/78	REVISED PER CITY COMMENTS
9	10/1/78	REVISED PER CITY COMMENTS
10	10/1/78	REVISED PER CITY COMMENTS

ENGINEERING CO.

1502 AUSTIN HWY. SUITE 100
 AUSTIN, TEXAS 78704

PROJECT NO. 1502AUSTIN

SUNSET SQUARE SHOPPING CENTER

THE STRONG BUILDING GROUP

1502 AUSTIN HWY. SUITE 100
 AUSTIN, TEXAS 78704

DATE: 10/1/78

- SCALE 1" = 30'
- POINT OF BEGINNING
- NORTHEAST PARKWAY
 (30' WIDE R.O.P.)
- 15.171 ACRES
 (660,859 S.F.)
- LOT 16
 1.50 ACRES
 (660,859 S.F.)
- LOT 17
 1.50 ACRES
 (660,859 S.F.)
- LOT 19
 1.50 ACRES
 (660,859 S.F.)
- LOT 2
 1.50 ACRES
 (660,859 S.F.)
- LOT 3
 1.50 ACRES
 (660,859 S.F.)

ABBREVIATIONS

1	CONCRETE
2	ASPHALT
3	GRAVEL
4	GRAVEL
5	GRAVEL
6	GRAVEL
7	GRAVEL
8	GRAVEL
9	GRAVEL
10	GRAVEL
11	GRAVEL
12	GRAVEL
13	GRAVEL
14	GRAVEL
15	GRAVEL
16	GRAVEL
17	GRAVEL
18	GRAVEL
19	GRAVEL
20	GRAVEL
21	GRAVEL
22	GRAVEL
23	GRAVEL
24	GRAVEL
25	GRAVEL
26	GRAVEL
27	GRAVEL
28	GRAVEL
29	GRAVEL
30	GRAVEL
31	GRAVEL
32	GRAVEL
33	GRAVEL
34	GRAVEL
35	GRAVEL
36	GRAVEL
37	GRAVEL
38	GRAVEL
39	GRAVEL
40	GRAVEL
41	GRAVEL
42	GRAVEL
43	GRAVEL
44	GRAVEL
45	GRAVEL
46	GRAVEL
47	GRAVEL
48	GRAVEL
49	GRAVEL
50	GRAVEL
51	GRAVEL
52	GRAVEL
53	GRAVEL
54	GRAVEL
55	GRAVEL
56	GRAVEL
57	GRAVEL
58	GRAVEL
59	GRAVEL
60	GRAVEL
61	GRAVEL
62	GRAVEL
63	GRAVEL
64	GRAVEL
65	GRAVEL
66	GRAVEL
67	GRAVEL
68	GRAVEL
69	GRAVEL
70	GRAVEL
71	GRAVEL
72	GRAVEL
73	GRAVEL
74	GRAVEL
75	GRAVEL
76	GRAVEL
77	GRAVEL
78	GRAVEL
79	GRAVEL
80	GRAVEL
81	GRAVEL
82	GRAVEL
83	GRAVEL
84	GRAVEL
85	GRAVEL
86	GRAVEL
87	GRAVEL
88	GRAVEL
89	GRAVEL
90	GRAVEL
91	GRAVEL
92	GRAVEL
93	GRAVEL
94	GRAVEL
95	GRAVEL
96	GRAVEL
97	GRAVEL
98	GRAVEL
99	GRAVEL
100	GRAVEL

SEE SHEET 2 OF 2 FOR
 GENERAL NOTES
 AND SURVEYOR'S CERTIFICATION

CURVE DATA

STATION	1+00.00	1+25.00	1+50.00	1+75.00	2+00.00
CHORD BEARING	N 00° 00' 00" E	N 00° 00' 00" E	N 00° 00' 00" E	N 00° 00' 00" E	N 00° 00' 00" E
CHORD DISTANCE	25.00	25.00	25.00	25.00	25.00
CHORD CURVATURE	0.0000	0.0000	0.0000	0.0000	0.0000
CHORD SLOPE	0.0000	0.0000	0.0000	0.0000	0.0000
CHORD AREA	0.0000	0.0000	0.0000	0.0000	0.0000
CHORD PERIMETER	0.0000	0.0000	0.0000	0.0000	0.0000

22015159