

A RESOLUTION **2013-11-21-0042R**

**APPROVING AN ALTERNATE RECOMMENDATION TO THE REQUEST SUBMITTED BY THE “COMMITTEE FOR THE INCORPORATION OF SANDY OAKS” AND CONSENTING TO THE INITIATION OF INCORPORATION PROCEEDINGS FOR A PORTION OF THE REQUESTED AREA ON THE EAST SIDE OF I.H. 37 SOUTH THAT TOTALS APPROXIMATELY 2.4 SQUARE MILES.**

\* \* \* \* \*

**WHEREAS**, municipal incorporation in the extraterritorial jurisdiction of another municipality must be executed pursuant to the written consent by ordinance or resolution of the municipality in which the proposed incorporation may occur; and

**WHEREAS**, the consent to the incorporation of the proposed is only an authorization to initiate incorporation proceedings by law; and

**WHEREAS**, on March 31, 2012, a “Committee for the Incorporation of Sandy Oaks” requested authorization to initiate incorporation proceedings for approximately four (4) square miles of land located within the Extraterritorial Jurisdiction (ETJ) of the City of San Antonio (“COSA”); and

**WHEREAS**, subject area is generally described as territory located in the southeast quadrant of Bexar County, inclusive of portions of the east side of the intersection of South Loop 1604 and Interstate Highway 37 South and extending south along Interstate Highway 37 South; and

**WHEREAS**, the City of San Antonio Planning Commission considered the matter at a public hearing at which all interested parties and citizens were allowed to be heard; and

**WHEREAS**, the Planning Commission recommends approval of the “Committee for the Incorporation of Sandy Oaks” request to initiate incorporation proceedings for the subject area; and

**WHEREAS**, the proposed incorporation conflicts with COSA’s Annexation Program Study Areas for future, near-term annexation; **NOW THEREFORE**,


**BE IT IS RESOLVED BY THE CITY COUNCIL OF THE CITY OF SAN ANTONIO:**

**SECTION 1.** The consent for “Committee for the Incorporation of Sandy Oaks” request to initiate municipal incorporation proceedings within the extraterritorial jurisdiction of San Antonio of approximately 2.4 square mile tract pursuant to Texas Local Government Code Sec. 42.041 is hereby granted. A map is attached hereto as ATTACHMENT 1 and incorporated herein by reference for all purposes.

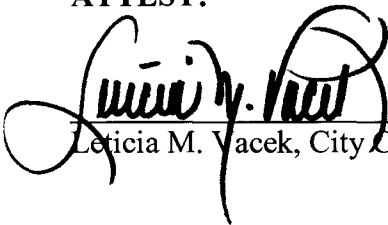
**SECTION 2.** The incorporation must be initiated within six months of the effective date of this resolution and must be finally completed within eighteen months of the date of this resolution. Failure to comply with either time requirements terminates this consent.

**SECTION 3.** This Resolution shall be effective immediately upon passage by eight or more affirmative votes; otherwise, it shall be effective on the tenth day after passage.


**PASSED AND APPROVED** on this 21<sup>st</sup> day of November, 2013.

  
M A Y O R  
Julián Castro

**ATTEST:**

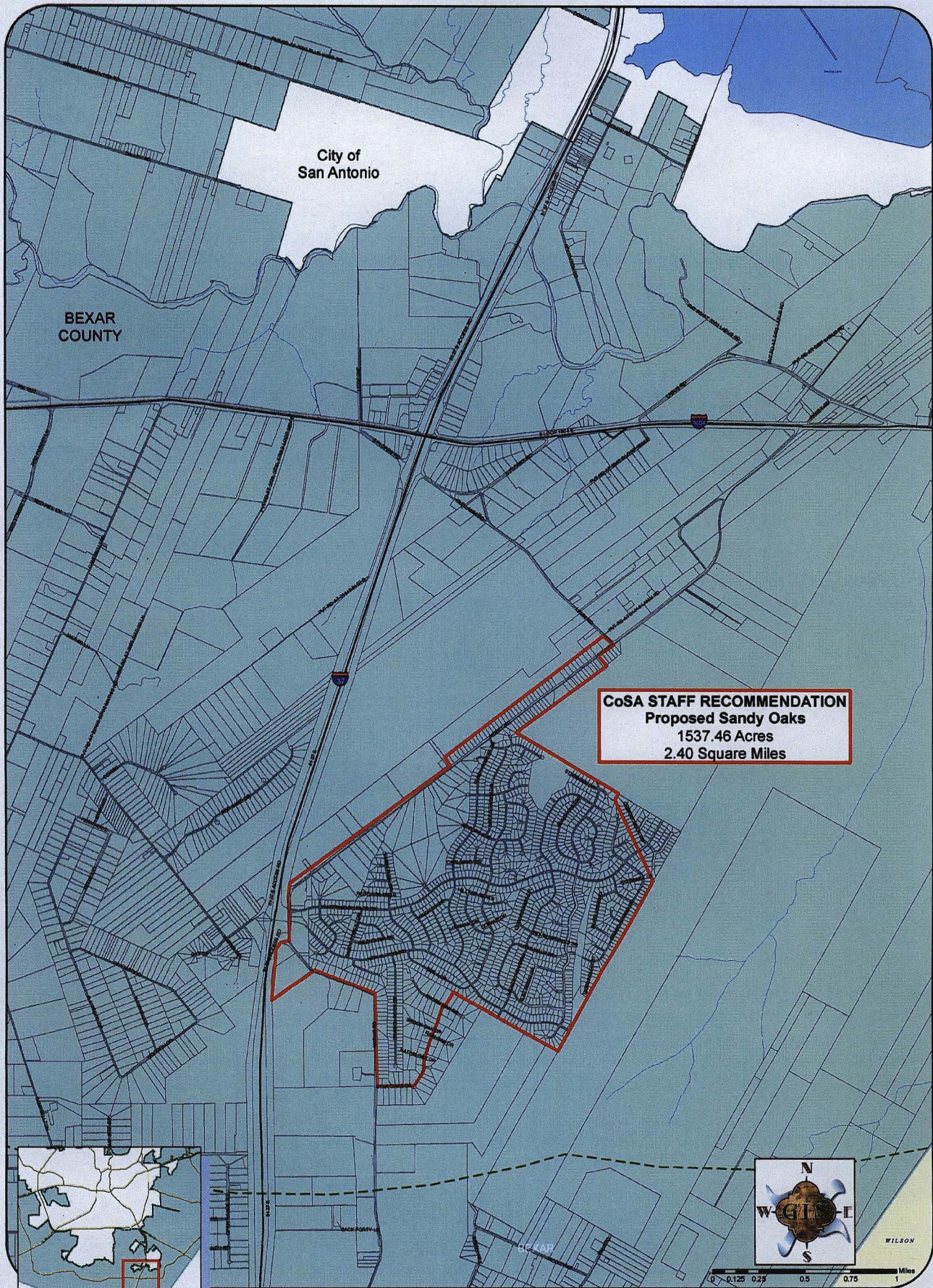
  
\_\_\_\_\_  
Leticia M. Vacek, City Clerk

**APPROVED AS TO FORM:**

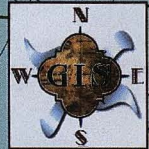
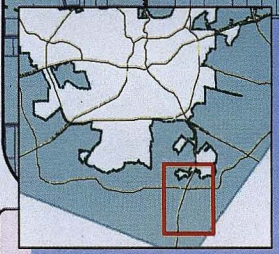
  
\_\_\_\_\_  
for Michael D. Bernard, City Attorney

<b>Agenda Item:</b>	49						
<b>Date:</b>	11/21/2013						
<b>Time:</b>	04:14:07 PM						
<b>Vote Type:</b>	Other: Staff Recommendation						
<b>Description:</b>	A Resolution authorizing initiation of incorporation proceedings by the "Committee for the Incorporation of Sandy Oaks" for approximately four (4) square miles of land located within the Extraterritorial Jurisdiction (ETJ) of the City of San Antonio (COSA). Staff recommends denial of the request as submitted by the "Committee for the Incorporation of Sandy Oaks" with an alternate recommendation of Approval of authorization to initiate incorporation proceedings for the portion of the requested area on the east side of I.H.-37 South that totals approximately 2.4 square miles. Planning Commission recommends approval of the request as submitted by the "Committee for the Incorporation of Sandy Oaks."						
<b>Result:</b>	Passed						
<b>Voter</b>	<b>Group</b>	<b>Not Present</b>	<b>Yea</b>	<b>Nay</b>	<b>Abstain</b>	<b>Motion</b>	<b>Second</b>
Julián Castro	Mayor		x				
Diego Bernal	District 1			x			
Ivy R. Taylor	District 2	x					
Rebecca Viagran	District 3		x				x
Rey Saldaña	District 4		x			x	
Shirley Gonzales	District 5		x				
Ray Lopez	District 6		x				
Cris Medina	District 7		x				
Ron Nirenberg	District 8		x				
Joe Krier	District 9		x				
Carlton Soules	District 10	x					





**CoSA STAFF RECOMMENDATION**  
**Proposed Sandy Oaks**  
 1537.46 Acres  
 2.40 Square Miles



- Proposed Sandy Oaks Boundary
- 2013 BCAD Parcels
- Expressways
- Extraterritorial Jurisdiction Line

Data Source: City of San Antonio, Esri/ArcGIS Online, Bexar Metro GIS, Bexar Appraisal District  
 This document contains confidential information. It is intended only for the individual or entity named in the header. If you have received this document in error, please notify the City of San Antonio at (210) 222-3111. Do not disseminate, distribute, or use this information for any purpose other than that intended. The City of San Antonio is not responsible for any errors or omissions in this document. All rights reserved. © 2013 City of San Antonio. All other rights reserved.

Map File Location: \open\_data\mxd\staff\_recommendation\staff\_recommendation\_2013  
 Map Last Edited: August 1, 2013  
 PDF Filename: 1308001.pdf

**City of San Antonio**  
**STAFF RECOMMENDATION**

