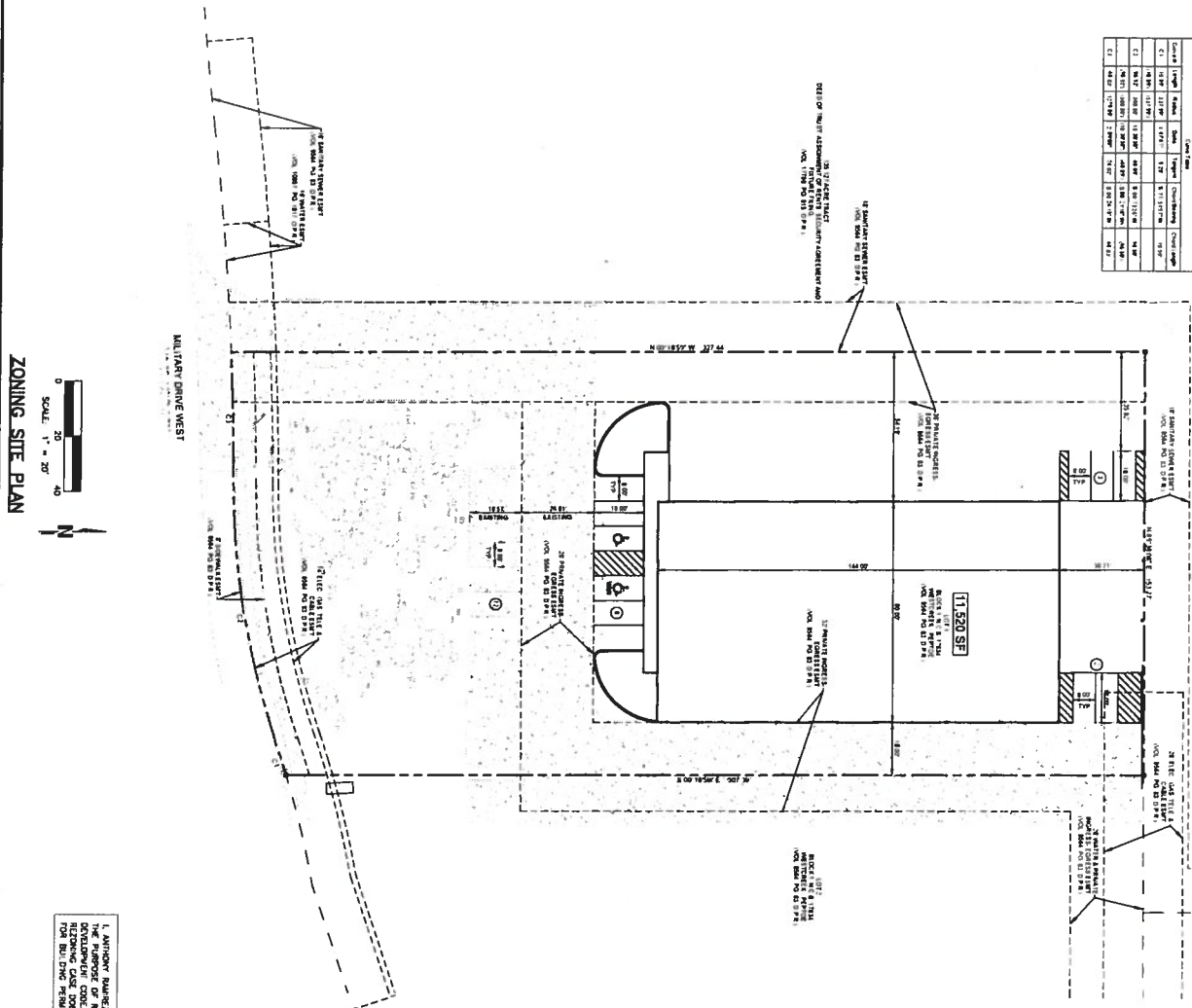


Code	Area	Area (sq. ft.)	Area (sq. ft.)	Area (sq. ft.)	Area (sq. ft.)	Area (sq. ft.)
C1	11,520 SF	11,520 SF	11,520 SF	11,520 SF	11,520 SF	11,520 SF
C2	11,520 SF	11,520 SF	11,520 SF	11,520 SF	11,520 SF	11,520 SF
C3	11,520 SF	11,520 SF	11,520 SF	11,520 SF	11,520 SF	11,520 SF
C4	11,520 SF	11,520 SF	11,520 SF	11,520 SF	11,520 SF	11,520 SF
C5	11,520 SF	11,520 SF	11,520 SF	11,520 SF	11,520 SF	11,520 SF
C6	11,520 SF	11,520 SF	11,520 SF	11,520 SF	11,520 SF	11,520 SF
C7	11,520 SF	11,520 SF	11,520 SF	11,520 SF	11,520 SF	11,520 SF
C8	11,520 SF	11,520 SF	11,520 SF	11,520 SF	11,520 SF	11,520 SF
C9	11,520 SF	11,520 SF	11,520 SF	11,520 SF	11,520 SF	11,520 SF
C10	11,520 SF	11,520 SF	11,520 SF	11,520 SF	11,520 SF	11,520 SF
C11	11,520 SF	11,520 SF	11,520 SF	11,520 SF	11,520 SF	11,520 SF
C12	11,520 SF	11,520 SF	11,520 SF	11,520 SF	11,520 SF	11,520 SF
C13	11,520 SF	11,520 SF	11,520 SF	11,520 SF	11,520 SF	11,520 SF
C14	11,520 SF	11,520 SF	11,520 SF	11,520 SF	11,520 SF	11,520 SF
C15	11,520 SF	11,520 SF	11,520 SF	11,520 SF	11,520 SF	11,520 SF
C16	11,520 SF	11,520 SF	11,520 SF	11,520 SF	11,520 SF	11,520 SF
C17	11,520 SF	11,520 SF	11,520 SF	11,520 SF	11,520 SF	11,520 SF
C18	11,520 SF	11,520 SF	11,520 SF	11,520 SF	11,520 SF	11,520 SF
C19	11,520 SF	11,520 SF	11,520 SF	11,520 SF	11,520 SF	11,520 SF
C20	11,520 SF	11,520 SF	11,520 SF	11,520 SF	11,520 SF	11,520 SF
C21	11,520 SF	11,520 SF	11,520 SF	11,520 SF	11,520 SF	11,520 SF
C22	11,520 SF	11,520 SF	11,520 SF	11,520 SF	11,520 SF	11,520 SF
C23	11,520 SF	11,520 SF	11,520 SF	11,520 SF	11,520 SF	11,520 SF
C24	11,520 SF	11,520 SF	11,520 SF	11,520 SF	11,520 SF	11,520 SF
C25	11,520 SF	11,520 SF	11,520 SF	11,520 SF	11,520 SF	11,520 SF
C26	11,520 SF	11,520 SF	11,520 SF	11,520 SF	11,520 SF	11,520 SF
C27	11,520 SF	11,520 SF	11,520 SF	11,520 SF	11,520 SF	11,520 SF
C28	11,520 SF	11,520 SF	11,520 SF	11,520 SF	11,520 SF	11,520 SF
C29	11,520 SF	11,520 SF	11,520 SF	11,520 SF	11,520 SF	11,520 SF
C30	11,520 SF	11,520 SF	11,520 SF	11,520 SF	11,520 SF	11,520 SF
C31	11,520 SF	11,520 SF	11,520 SF	11,520 SF	11,520 SF	11,520 SF
C32	11,520 SF	11,520 SF	11,520 SF	11,520 SF	11,520 SF	11,520 SF
C33	11,520 SF	11,520 SF	11,520 SF	11,520 SF	11,520 SF	11,520 SF
C34	11,520 SF	11,520 SF	11,520 SF	11,520 SF	11,520 SF	11,520 SF
C35	11,520 SF	11,520 SF	11,520 SF	11,520 SF	11,520 SF	11,520 SF
C36	11,520 SF	11,520 SF	11,520 SF	11,520 SF	11,520 SF	11,520 SF
C37	11,520 SF	11,520 SF	11,520 SF	11,520 SF	11,520 SF	11,520 SF
C38	11,520 SF	11,520 SF	11,520 SF	11,520 SF	11,520 SF	11,520 SF
C39	11,520 SF	11,520 SF	11,520 SF	11,520 SF	11,520 SF	11,520 SF
C40	11,520 SF	11,520 SF	11,520 SF	11,520 SF	11,520 SF	11,520 SF
C41	11,520 SF	11,520 SF	11,520 SF	11,520 SF	11,520 SF	11,520 SF
C42	11,520 SF	11,520 SF	11,520 SF	11,520 SF	11,520 SF	11,520 SF
C43	11,520 SF	11,520 SF	11,520 SF	11,520 SF	11,520 SF	11,520 SF
C44	11,520 SF	11,520 SF	11,520 SF	11,520 SF	11,520 SF	11,520 SF
C45	11,520 SF	11,520 SF	11,520 SF	11,520 SF	11,520 SF	11,520 SF
C46	11,520 SF	11,520 SF	11,520 SF	11,520 SF	11,520 SF	11,520 SF
C47	11,520 SF	11,520 SF	11,520 SF	11,520 SF	11,520 SF	11,520 SF
C48	11,520 SF	11,520 SF	11,520 SF	11,520 SF	11,520 SF	11,520 SF
C49	11,520 SF	11,520 SF	11,520 SF	11,520 SF	11,520 SF	11,520 SF
C50	11,520 SF	11,520 SF	11,520 SF	11,520 SF	11,520 SF	11,520 SF



ZONING SITE PLAN

SCALE: 1" = 20'

0 20 40

N

I, AUTHOR HEREBY ADVISED AGAIN FOR THE PROPERTY OWNER, ACKNOWLEDGE THAT THIS SITE PLAN SUBMITTED FOR THE PURPOSE OF REVIEWING THE PROPOSED DEVELOPMENT IS A PRELIMINARY PLAN AND DOES NOT REPRESENT A FINAL DESIGN. THE CITY COUNCIL, APPROVAL OF A SITE PLAN AT CONSTRUCTION WITH A DEVELOPMENT CODE, ADDITIONALLY, I UNDERSTAND THAT CITY COUNCIL APPROVAL OF A SITE PLAN AT CONSTRUCTION WITH A DEVELOPMENT CODE DOES NOT RELIEVE ME FROM ADHERENCE TO ANY/CITY-ADOPTED CODES AT THE TIME OF PLAN SUBMITTAL.

- EXISTING ZONING:** C1
- PROPOSED ZONING:** C1 WITH A SPECIAL USE TO ALLOW AUTOMOBILE COLLISION REPAIR
- ZONING DATA TABLE**
- | USE | AREA (SQ. FT.) | AREA (SQ. FT.) | AREA (SQ. FT.) | AREA (SQ. FT.) | AREA (SQ. FT.) | AREA (SQ. FT.) |
|-----------|----------------|----------------|----------------|----------------|----------------|----------------|
| OFFICE | 11,520 SF | 11,520 SF | 11,520 SF | 11,520 SF | 11,520 SF | 11,520 SF |
| PARKING | 1,152 SF | 1,152 SF | 1,152 SF | 1,152 SF | 1,152 SF | 1,152 SF |
| LANDSCAPE | 1,152 SF | 1,152 SF | 1,152 SF | 1,152 SF | 1,152 SF | 1,152 SF |
| STREET | 1,152 SF | 1,152 SF | 1,152 SF | 1,152 SF | 1,152 SF | 1,152 SF |
| TOTAL | 13,824 SF | 13,824 SF | 13,824 SF | 13,824 SF | 13,824 SF | 13,824 SF |
- PERMITS COVER DATE:** 01/15/2011
- MAX. SIZE OF PROPOSED BUILT AREA:** 27,648 SF
- MAX. SIZE OF PROPOSED IMPROVEMENT COVER (INCL. LANDSC.):** 38,880 SF
- OFF-STREET PARKING REQUIREMENTS:**
- 21 - 1 P.S. PER 375 GFA (MINIMUM)
 - 23 - 1 P.S. PER 500 GFA (MINIMUM)
- PROPOSED TOTAL:** 23
- ADJ. REQUIRED:** 1 - 1 VAN ACCESSIBLE
- ADJ. PROVIDED:** 2 - 1 STANDARD & 1 VAN ACCESSIBLE

Z2016268

210 ENTRANCE, LTD
1604 @ W MILITARY
SAN ANTONIO, TEXAS
ZONING SITE PLAN

VILLAGOMEZ ENGINEERING COMPANY

SAN ANTONIO TEXAS 78250
PHONE 210.748.0118
FAX 210.885.8278

TEXAS BOARD OF PROFESSIONAL ENGINEERS FIRM REGISTRATION # 1868

DATE: 11-20-11
BY: [Signature]
CHECKED: [Signature]
SCALE: 1" = 20'

RESPONSE: