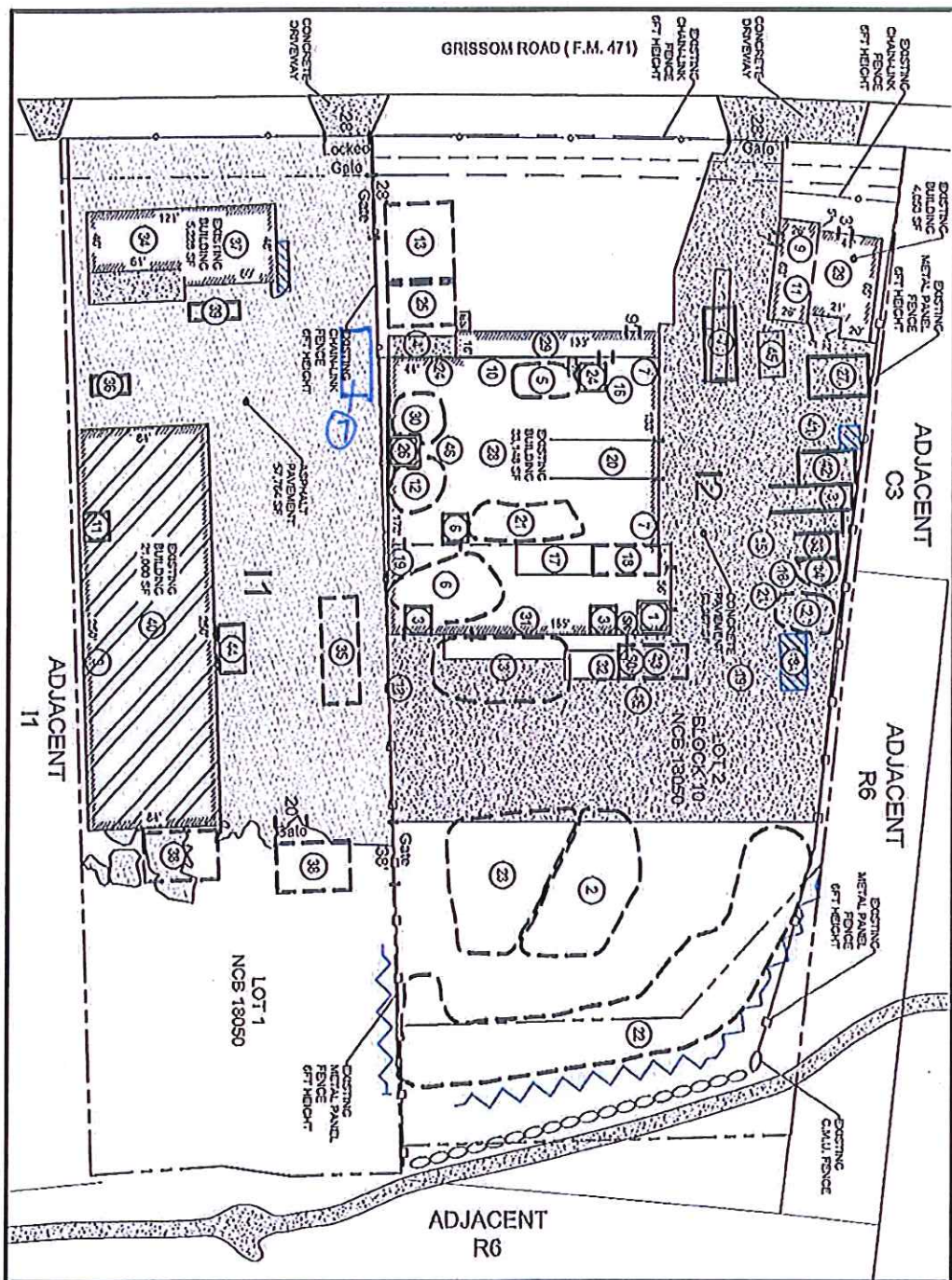


Tom A. Truesch, Resident of

I, **ERT Enterprises, Inc.**, the property owner, acknowledge that this site plan submitted for the purpose of rezoning this property is in accordance with all applicable provisions of the Unified Development Code. Additionally, I understand that City Council approval of a site plan in conjunction with a rezoning case does not relieve me from adherence to any/all City-adopted Codes at the time of plan submittal for building permits.

REZONING:
I1 AND I2 TO I-2 HEAVY INDUSTRIAL DISTRICT WITH A SPECIFIC USE AUTHORIZATION FOR METAL RECYCLING ENTITY WITH OUTSIDE STORAGE AND/OR PROCESSING

SCALE: 1" = 100'



KEY

| | |
|--|--|
| ① 2,000-Gallon Diesel AST | ②③ C-100 Use |
| ② Remold Material | ②④ Equipment & Vehicle |
| ③ Aluminum Storage | ②⑤ Natural Storage |
| ④ Copper Storage | ②⑥ Oil (Crude, Tires, Unused) |
| ⑤ Brass Storage | ②⑦ Natural Sorting, Processing, and Storage |
| ⑥ Stainless Steel Storage | ②⑧ 55-Gallon Liquid Oxygen AST |
| ⑦ Scale | ②⑨ Compressor Storage (Covered Area) |
| ⑧ Compressed Gas Storage | ②⑩ Compressor Station Storage (Equipment) |
| ⑨ Fuel Storage | ②⑪ Equipment Maintenance Area |
| ⑩ Land Storage | ②⑫ Sulfuric System Leach Field |
| ⑪ Battery Storage | ②⑬ User Oil and Antineon Storage |
| ⑫ Diesel Storage | ②⑭ Spill Kit |
| ⑬ Equipment Storage | ②⑮ Electric Storage |
| ⑭ Refrigeration/Chilling Core Storage | ②⑯ Elyman Station |
| ⑮ Loading/Unloading Area | ②⑰ Secondary Complant |
| ⑯ Car Dealer | ②⑱ Concrete Area |
| ⑰ Heavy Duty Gas-Catalytic Hydraulic Oil Reservoir | ②⑳ Asphlt Over Concrete |
| ⑱ Wire Storage | ②㉑ Asphalt |
| ⑲ Trenching Station | ②㉒ Crushed Open Air Building |
| ⑳ Loading Dock | ②㉓ Steel Panel Fence |
| ㉑ In-process Material | ②㉔ Back Wall |
| ㉒ Heavy Iron | ②㉕ Area Boundary |
| ㉓ Thiocyanate Standard | ②㉖ Great Northwest Recycling Site Boundary |
| ㉔ Storage Area | ②㉗ Great Northwest Recycling 2,000-Burner |
| ㉕ Gas-Catalytic Tower Oil AST | ②㉘ 12-in. Embankment |
| ㉖ Acid Storage | ②㉙ 3-ft. High Burn |
| ㉗ Natural Storage, Processing, and Storage | ②㉚ Enclosed Structure |
| ㉘ Oil and Natural Storage | ②㉛ 55-Gallon Oil Drum Storage |
| ㉙ Refinement Tank Storage | ②㉜ AS Over Feeding to Line with Electric Wire Fences |
| ㉚ Electric Shop | ②㉝ Paved Summer |
| ㉛ Tanking Maintenance (Covered Area) | ②㉞ Summer Paving Area |
| ㉜ Turbine Storage (Covered Area) | ②㉟ Elevation Area |
| ㉝ Natural Storage, Processing, and Storage | ②㊱ Elevation Area |
| ㉞ Empty Roller Storage | |
| ㉟ Plastic Storage Raiser | |

CONCRETE & ASPHALT, INC.

SITE PLAN

Company - Great Northwest Recycling/
 Great Northwest Recycling 2
 Address - 7386/7416 Grissom Road
 City - San Antonio | State - Texas
 County - Bexar | Date -