



December 3rd, 2020

Mr. Eric Salazar, P.E.
Project Manager
City of San Antonio TCI
114 W. Commerce
San Antonio, TX 78205

RE: Fredericksburg Road (Culebra to W. Craig Place)
Fee Proposal Acceptance Letter
SAWS Water Job #: 17-5143
SAWS Sewer Job #: 17-5624

Dear Mr. Salazar:

The Poznecki-Camarillo, Inc. proposal dated December 2nd, 2020, a copy of which is attached, in the lump sum fee of \$131,962.00 for Basic engineering services in connection with the Fredericksburg Road (Culebra to W. Craig Place) Project is accepted by SAWS. Payment will be made per Section 2 – Method of Payments section of Attachment 5.

The following is a breakdown of the **Basic Engineering Services**:

Design Phase	\$ Water Fee	\$ Sewer Fee	\$ Total Fee	Weeks
70% Design	\$43,078.00	\$13,324.00	\$56,402.00	4
95% Design	\$20,339.00	\$8,755.00	\$29,094.00	3
100% Design & Bid	\$7,763.00	\$3,118.00	\$10,881.00	6
Construction	\$18,483.00	\$7,796.00	\$26,279.00	26
Close Out	\$6,225.00	\$3,081.00	\$9,306.00	3
TOTAL	\$95,888.00	\$36,074.00	\$131,962.00	42

It is understood that the fee as approved provides for all engineering services outlined in the SAWS Scope of Services, Attachment 5, to the City of San Antonio engineering contract, whether individually stated in the fee proposal or not. It is our understanding that the initial survey required for the design of SAWS facilities, as defined under the Base Mapping section of the Design Guidance Manual, has been included in the City’s proposal. It is further understood that the design of SAWS facilities will be done in conformance with the requirements in the Design Guidance Manual.

You are hereby authorized to proceed with these services in conjunction with the city schedule.

Should you need any additional information, please feel free to contact me at 210-233-3049 or Stephen Morales at 210-233-3857.

Sincerely,

Michael Boyd, P.E.
Project Engineer
Pipelines - Governmental Engineering

Attachment: Accepted Proposal

CC: Nina Bittle, P.E. - SAWS
Stephen Morales, E.I.T. – SAWS
Fernando Camarillo, P.E. – Poznecki-Camarillo, Inc.

December 2, 2020

Eric Salazar, P.E.
Project Manager
City of San Antonio - TCI
114 W. Commerce, 5th Floor
San Antonio, TX 78205

RE: 2017-2022 Bond Program – Fredericksburg Rd (Culebra to W. Craig Place)
SAWS Plans – Water & Sewer Design Fee Proposal

Dear Mr. Salazar:

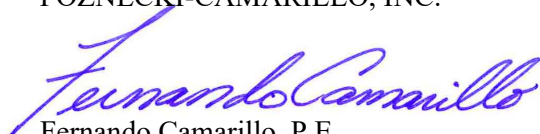
Poznecki-Camarillo, Inc.(PCI) is pleased to submit our request for authorization to perform the SAWS Water & Sewer Design related services for the Fredericksburg Road project. The costs associated for the engineering design services with the unit rate specified in the professional engineering services contract, is \$131, 962.00. Please see attached documents for the fee proposal breakdown spreadsheet.

Phase	\$ Water Fee	\$Sewer Fee	Weeks
70% Design	\$43,078.00	\$13,324.00	4
95% Design	\$20,339.00	\$8,755.00	3
100% Design and Bid	\$7,763.00	\$3,118.00	6
Construction	\$18,483.00	\$7,796.00	26
Close Out	\$6,225.00	\$3,081.00	3
TOTAL	\$95,888.00	\$36,074.00	42

With your authorization we will move forward with performing this task as needed.

If you have any questions, please do not hesitate to call me or Mike Guerra, P.E. at 210-349-3273.

Sincerely,
POZNECKI-CAMARILLO, INC.


Fernando Camarillo, P.E.
CEO

Attachments



Revised: December 02, 2020

Mr. Mike Guerra, PE
Engineer 3
Poznecki-Camarillo, Inc.
5835 Callaghan Road, Ste. 200
San Antonio, TX 78228

Subject: Fredericksburg Rd - (Culebra to W Craig Place 23-01582) Project
SAWS Water Job No. 17-5143
SAWS Sewer Job No. 17-5624
Scope & Fee Proposal

Dear Mr. Guerra:

BGE is pleased to submit this lump sum proposal for engineering services to Poznecki-Camarillo, Inc. for the above referenced project. We understand that this work will be joint bid with City of San Antonio. We propose to perform work as described in "Attachment A - Scope of Service.". The Basic Service Fee of \$125,344.00 is based on Attachment B, Engineering Service Fee Breakdown. The Basic Service Fee is a lump sum amount Fee is in not-to-exceed amount. We propose a lump sum fee to be paid as shown in the table below. Payment will be made as work is completed and approved to include 70% design, 95% Design Phase plans, 100% Design and Bid Phase, Construction Services and Closeout Phase. schedule of completion and production will be coordinated with City of San Antonio proposed advertising schedule.

Phase	\$ Water Fee	\$ Sewer Fee	Weeks
70% Design	\$41,550.00	\$12,618.00	4
95% Design	\$19,317.00	\$8,049.00	3
100% Design and Bid	\$7,510.00	\$2,865.00	6
Construction	\$17,408.00	\$7,227.00	26
Close Out	\$5,972.00	\$2,828	3
TOTAL	\$91,757.00	\$33,587.00	42

Thank you very much for this opportunity and we look forward to the successful completion of your Project. Please feel free to contact me should you have any questions or would like to discuss in more detail.

Sincerely,

Abdel Hamed, P.E.
BGE



ATTACHMENT A – SCOPE OF SERVICES

Project Background

Poznecki-Camarillo, Inc. has researched the existing water and sewer facilities for the above referenced project within the project limits.

Recommended Work

The City of San Antonio plans to reconstruct various Storms, streets and Sidewalks in different sections of Fredericksburg Rd - (Culebra to W Craig Place 23-01582) Due to the CoSA improvements, it appears they have the following potential conflicts based on conflict matrix provided by Poznecki-Camarillo, Inc. on November 13, 2020 (attached):

Fredericksburg Rd

- 12" W Fredericksburg Rd Sta 23+29 (Long)
 - Conflict with Proposed ADA Ramp
- 8" W Fredericksburg Rd Sta 33+54 (Long) 22.8 LT
 - Conflict with Proposed Sidewalk and driveway
 - conflict around inlet CI-A21 near STA 33+75 and inlet C1-A21-1 near 34+75
- 8" PVC W Fredericksburg Rd Sta 37+68 (Long)
 - Conflict with Proposed Sidewalk
- 8" DI W Fredericksburg Rd Sta 40+75 to Sta 74+30
 - Between stations 50+00 to 56+00, 57+00 to 64+00, 65+00 to 72+00, it appears there is not any apparent water main replacements other than box/valve/fire hydrants
- 6" AC W Fredericksburg Rd Sta 40+76 (Crossing)
 - Conflict with Proposed Driveway
- 8" DI W Fredericksburg Rd Sta 43+16 (Crossing)
 - Conflict with Proposed Sidewalk
- 8" DI W Fredericksburg Rd Sta 43+98 to Sta 44+42
 - Conflict with Proposed Inlet
- 8" DI W Fredericksburg Rd Sta 64+55 to Sta 64+99
 - Conflict with Proposed Sidewalk Between station 56+00 to 74+00 is the add alternate design
- 8" DI W Fredericksburg Rd Sta 72+13 to Sta 72+29
 - Conflict with Proposed Inlet
- 8" DI W Fredericksburg Rd Sta 73+63 to Sta 73+83
 - Conflict with Proposed Inlet

A summary of specific areas of consideration for water adjustments are as follows:

- **Water Meter boxes** (only **34 Meter Boxes** at various locations/stations) – Adjustments and possible replacement as needed for Meter boxes located in the proposed sidewalk
- **Water valves** (only **9 Water Valves** at various locations/stations) – Adjustments and possible replacement water Valves as needed to avoid conflicts with proposed sidewalk
- **Fire hydrants** (only **2 Fire Hydrants** at various locations/stations) – Adjustments and possible replacement as needed for Fire hydrants.



A summary of specific areas of consideration for sewer adjustments are as follows:

- **Sewer manholes** (Base Bid 14 Manholes and Add Alternate 7 Manholes) –Adjustments and possible replacement as needed for avoid conflicts and street grading.

Scope of Services

The following Scope of Services is proposed for the completion of the Project. The various tasks and deliverables are to be performed and submitted in accordance with the Project’s approved schedule.

I. Project Management

All communication and submittals to Poznecki-Camarillo, Inc. will be directed through the team’s Project Manager unless specifically authorized otherwise. The project management activities shall include task leadership and direction, telephone and written communication, project updates and status reports, project schedule, and personnel and data management along with other general project management activities.

II. 70% Design

Upon written Notice to Proceed (NTP) from Poznecki-Camarillo, Inc., BGE will complete the 70% design submittal, which includes the following:

a. Meetings

- i. Project Meetings: Attendance of progress meeting with Poznecki-Camarillo SAWS or CoSA. Attendance of one coordination meeting with Poznecki-Camarillo and SAWS staff.
- ii. Site Visit(s): Attend one site visit with Poznecki-Camarillo Project Manager and Project Engineer.
- iii. Staff Meeting(s): Correspondence with Poznecki-Camarillo, SAWS and CoSA staff to obtain updated project information.
- iv. Public Meetings: NOT INCLUDED.

b. Design Documents

- i. Regulations research, background conflict research, and minimum design guidelines to be reflected in the 70% design phase deliverable.
- ii. Collect and review proposed project design existing water and sewer facilities (as identified by SAWS Block maps and as-built record drawings).
- iii. Identification of potential conflicts.
- iv. Identification of SAWS utilities at risk due to construction of the Project.
- v. Recommendations, if any, for SAWS utility relocation
- vi. Development and preparation of plan sheets and notes. It is assumed that the compilation of SAWS’ standard water and sewer details will be included in the construction documents, as necessary. it is assumed that the Project will include SAWS’ general standard notes, which will not be amended by the Engineer for this Project.
- vii. Development and preparation of SAWS Change of Service forms are be included in this project.
- viii. Development of Opinion of Probable Construction Cost (OPCC).



- ix. Development of plan sheets, quantity table per sheet and notes for Water Meter boxes, water valves and Sewer manholes adjustment within the project limits, details, notes and quantity table per sheet.
 - x. Project technical specifications – Utilize SAWS Construction & Material standard Specification.
 - xi. Front-end contract requirements – review SAWS additions to the CoSA General Conditions and determine conflicting language or recommend clarifications, if any.
 - xii. Prepare and develop 70% Opinion of Probable Construction Cost (OPCC).
- c. Deliverables
- i. 70% Engineering Plans set, 1 PDF.
 - ii. 70% OPCC. 1 – PDF.
 - iii. QA/QC checklists.
 - iv. Annotate plans for response to 70% comments.

III. 95% Design

Upon written Notice to Proceed (NTP) from Poznecki-Camarillo, Inc., BGE will complete the 95% design submittal, which includes the following:

- a. Meetings
 - i. Project Meetings: Attendance of progress meeting with Poznecki-Camarillo SAWS or CoSA. Attendance of one coordination meeting with Poznecki-Camarillo and SAWS staff.
 - ii. Site Visit(s): Attend one site visit with Poznecki-Camarillo Project Manager and Project Engineer.
 - iii. Staff Meeting(s): Correspondence with Poznecki-Camarillo, SAWS and CoSA staff to obtain updated project information.
 - iv. Public Meetings: NOT INCLUDED.
- b. Design Documents
 - i. Finalize Development and preparation of plan sheets and notes. It is assumed that the compilation of SAWS' standard water and sewer details will be included in the construction documents, as necessary. It is assumed that the Project will include SAWS' general standard notes, which will not be amended by the Engineer for this Project.
 - ii. Finalize Development and preparation of SAWS Change of Service forms are be included in this project.
 - iii. Finalize Development of Opinion of Probable Construction Cost (OPCC).
 - iv. Finalize plan sheets, quantity table per sheet and notes for Water Meter boxes, water valves and Sewer manholes adjustment within the project limits, details, notes and quantity table per sheet.
 - v. Project technical specifications – Utilize SAWS Construction & Material standard Specification.



- vi. Front-end contract requirements – review SAWS additions to the CoSA General Conditions and determine conflicting language or recommend clarifications, if any.
- c. Deliverables
 - i. 95% Engineering Plans set, 1 PDF.
 - ii. 95% OPCC. 1 – PDF.
 - iii. QA/QC checklists.
 - iv. Annotate plans for response to 95% comments.

IV. Final 100% design /Bid Phase Services

Upon receipt of 95% review comments, BGE will complete the Bid Phase services includes the following:

- a. Prepare final Engineering design plans for bid.
- b. Project Specifications; to include SAWS-provided standard technical specifications (SAWS standards and special specifications).
- c. Attendance at the Joint-Bid pre-construction conference. CoSA will lead the pre-bid conference and all direct communication with prospective bidders.
- d. Response to contractor questions via project addenda (assume 1 addenda).
- e. It is assumed that the review of all bidders will be conducted by CoSA and that BGE will not support the overall effort. BGE will review low bidder and/or their sub-contractor for general qualifications and check associated references in relation to SAWS project only.
- f. Analysis of variations in bid (compared to estimate) and recommendation of award.
- g. Issuance of conformed construction documents resulting from project addenda.
- h. Deliverables
 - i. 100% Signed and Sealed Engineering Plans set, 1 PDF.
 - ii. Conformed Signed and Sealed Engineering Plans set, 1 PDF.

V. Construction Phase Services

It is assumed that construction duration for the SAWS component of the Project is six (6) months. BGE will support the Project during construction as follows:

- a. Project Management / Coordination
- b. Attend pre-construction conference and provide meeting minutes.
- c. Respond to requests for Information (RFIs)/modifications – 3 assumed.
- d. Project meetings/construction observation including construction observation reports – assume 1 site visit per month (6 total).
- e. Construction material submittal reviews, 3 assumed.
- f. Monthly pay estimate review.
- g. Review change orders – 2 change orders assumed, includes independent cost estimate, using latest RS mean cost estimate tools.



- h. Final completion – include final completion walkthrough and issuance of punchlist items.
- i. Deliverables
 - i. Construction observation reports in pdf format
 - ii. Shop drawing submittal log in pdf format
 - iii. Change order log in pdf format
 - iv. Monthly pay estimate concurrence in pdf format
 - v. Material testing log- NOT INCLUDED

VI. Close Out Phase

- a. Prepare Record Drawings of water facilities for review.
- b. Deliverables.
 - i. Record Drawings – Draft Review.
 - ii. Record Drawings – Final Submittal.

VII. Assumptions

- a. Topography Survey, base mapping, tree survey for easements and corresponding field notes are NOT INCLUDED in this proposal.
- b. Geotechnical NOT INCLUDED. BGE will utilize geotechnical borings and accompanying geotechnical design report provided by the County related to the County's roadway improvements project.
- c. Subsurface Utilities Engineering (SUE) NOT INCLUDED
- d. Environmental and Archeological professional services are not necessary for the construction of SAWS' portion of the project. All environmental and/or archeological permitting associated with pipeline relocations will be incorporated with the overall roadway improvement project managed by the County and will not be the responsibility of BGE.
- e. Preparation of tree protection plan sheets, permitting and coordination with COSA arborist are NOT INCLUDED in this proposal.
- f. An erosion and sedimentation control plan and a stormwater pollution prevention plan (SWPPP) – NOT INCLUDED (It is assumed that said documents will be developed by the County's project engineer).

UTILITY CONFLICT MATRIX

Project Name: Fredericksburg Road
 Project No: 23-01582
 Prepared By: LEONARD D. YOUNG, PE
 Engineering Design Firm: YPR
 Submittal: % 95%
 Date: 11/13/20



UTILITY	OWNER	LOCATION	STATION			CONFLICT DESCRIPTION	RECOMMENDED ACTION REQ'D	STATUS	UTILITY CONFLICT ID	
COMM (EXIST)		AT&T								
TELEPHONE POWER POLE #1	AT&T	FREDERICKSBURG ROAD	33+88		27.8'	RT	CONFLICT W/PROP DRIVEWAY	RELOCATE POWER POLE	COORDINATE W/AT&T	48
UNDERGROUND TELEPHONE LINE(FROM AS-BUILTS)	AT&T	FREDERICKSBURG ROAD	44+00		57+00	RT	CONFLICT W/PROP INLET & ROADWAY	VERIFY VERTICAL CLEARANCE	COORDINATE W/AT&T	90A
TRAFFIC SIGNAL BOX	AT&T	FREDERICKSBURG ROAD	45+88		27.3'	RT	CONFLICT W/PROP SIDEWALK	VERTICAL ADJUSTMENT	COORDINATE W/AT&T	90
TELEPHONE POWER POLE #5	AT&T	W ASHBYL PL	10+76		19.6'	RT	CONFLICT W/PROP SIDEWALK	RELOCATE POWER POLE	COORDINATE W/AT&T	135
TH #13	POTHOLE	FREDERICKSBURG ROAD	55+81		29.2'	LT	DEPTH TO TOP OF UTILITY 3.08'	AVOID THE INFRASTRUCTURE		
FIBER PEDESTAL	AT&T	FREDERICKSBURG ROAD	66+50		36	RT	CONFLICT W/PROP SIDEWALK	MITIGATE IMPACT	CONFLICT RESOLVED WITH PROP IMPROVEMENTS	166
DRAINAGE (EXIST)		COSA								
STORM DRAIN LINE	COSA	FREDERICKSBURG ROAD	20+48	XING		LT	CONFLICT W/PROP SIDEWALK AND ROADWAY	VERIFY VERTICAL CLEARANCE	COORDINATE W/COSA	1
STORM DRAIN LINE	COSA	FREDERICKSBURG ROAD	21+4	XING		LT	CONFLICT W/PROP SIDEWALK AND ROADWAY	VERIFY VERTICAL CLEARANCE	COORDINATE W/COSA	2
STORM DRAIN LINE	COSA	FREDERICKSBURG ROAD	21+80	XING		LT	CONFLICT W/PROP SIDEWALK AND ROADWAY	VERIFY VERTICAL CLEARANCE	COORDINATE W/COSA	3
STORM DRAIN LINE	COSA	FREDERICKSBURG ROAD	22+24	XING		LT	CONFLICT W/PROP SIDEWALK AND ROADWAY	VERIFY VERTICAL CLEARANCE	COORDINATE W/COSA	4
CURB INLET	COSA	FREDERICKSBURG ROAD	23+40		78.4	LT	CONFLICT W/PROP SIDEWALK AND ROADWAY	VERIFY VERTICAL CLEARANCE	COORDINATE W/COSA	5
STORM DRAIN LINE	COSA	FREDERICKSBURG ROAD	22+94	XING			CONFLICT W/PROP SIDEWALK AND ROADWAY	VERIFY VERTICAL CLEARANCE	COORDINATE W/COSA	6
CURB INLET	COSA	FREDERICKSBURG ROAD	23+73		32.4'	RT	CONFLICT W/PROP CURB	VERIFY VERTICAL CLEARANCE	COORDINATE W/COSA	17
STORM DRAIN LINE	COSA	PRINCETON AVE	10+44	XING	5.5'	LT	CONFLICT W/PROP INLET EXTENSIONS	VERIFY VERTICAL CLEARANCE	COORDINATE W/COSA	95
STORM DRAIN LINE	COSA	PRINCETON AVE	10+84	XING		RT	CONFLICT W/PROP RT INLET EXTENSIONS	VERIFY VERTICAL CLEARANCE	COORDINATE W/COSA	96
STORM DRAIN LINE	COSA	FREDERICKSBURG ROAD	47+67	XING			CONFLICT W/PROP LT AND RT INLET EXTENSIONS	VERIFY VERTICAL CLEARANCE	CONFLICT RESOLVED WITH PROP IMPROVEMENTS	97
STORM DRAIN LINE	COSA	UNIVERSITY AVE	10+00	LT	10+54	LT	CONFLICT W/PROP SIDEWALK AND DRIVEWAY	VERIFY VERTICAL CLEARANCE	COORDINATE W/COSA	119

UTILITY CONFLICT MATRIX

Project Name: Fredericksburg Road
 Project No: 23-01582
 Prepared By: LEONARD D. YOUNG, PE
 Engineering Design Firm: YPR
 Submittal: % 95%
 Date: 11/13/20



UTILITY	OWNER	LOCATION	STATION			CONFLICT DESCRIPTION	RECOMMENDED ACTION REQ'D	STATUS	UTILITY CONFLICT ID
STORM DRAIN LINE	COSA	UNIVERSITY AVE	10+53	XING		CONFLICT W/PROP LT AND RT INLET EXTENSIONS	VERIFY VERTICAL CLEARANCE	CONFLICT RESOLVED WITH PROP IMPROVEMENTS	120
STORM DRAIN LINE	COSA	FREDERICKSBURG ROAD	49+83	XING		CONFLICT W/PROP LT AND RT INLET EXTENSIONS	VERIFY VERTICAL CLEARANCE	COORDINATE W/COSA	121
STORM DRAIN LINE	COSA	FREDERICKSBURG ROAD	54+37	XING	LT	CONFLICT W/PROP LT INLET EXTENSIONS	VERIFY VERTICAL CLEARANCE	COORDINATE W/COSA	127
STORM DRAIN LINE	COSA	FREDERICKSBURG ROAD	56+90	XING		CONFLICT W/PROP LT AND RT INLET EXTENSIONS	VERIFY VERTICAL CLEARANCE	CONFLICT RESOLVED WITH PROP IMPROVEMENTS	133
STORM DRAIN LINE	COSA	FREDERICKSBURG ROAD	58+94	XING		CONFLICT W/PROP LT AND RT INLET EXTENSIONS	VERIFY VERTICAL CLEARANCE	CONFLICT RESOLVED WITH PROP IMPROVEMENTS	134
STORM DRAIN LINE	COSA	FREDERICKSBURG ROAD	62+00	XING		CONFLICT W/PROP LT AND RT INLET EXTENSIONS	VERIFY VERTICAL CLEARANCE	CONFLICT RESOLVED WITH PROP IMPROVEMENTS	152
STORM DRAIN LINE	COSA	FREDERICKSBURG ROAD	63+63	XING		CONFLICT W/PROP LT AND RT INLET EXTENSIONS	VERIFY VERTICAL CLEARANCE	CONFLICT RESOLVED WITH PROP IMPROVEMENTS	153
PROP DRAIN INLET	COSA	FREDERICKSBURG ROAD	70+19		8' LT	CONFLICT W/DRAIN LATERALS	VERIFY VERTICAL CLEARANCE	ADJUST PROP INLET	168
STORM DRAIN LINE	COSA	FREDERICKSBURG ROAD	70+18	XING		CONFLICT W/PROP LT AND RT INLET EXTENSIONS	VERIFY VERTICAL CLEARANCE	CONFLICT RESOLVED WITH PROP IMPROVEMENTS	168A
STORM DRAIN LINE	COSA	FREDERICKSBURG ROAD	10+20	XING	42' RT	CONFLICT W/PROP ADA RAMP	VERIFY VERTICAL CLEARANCE	COORDINATE W/COSA	168B
STORM DRAIN LINE	COSA	FREDERICKSBURG ROAD	72+21	XING		CONFLICT W/PROP LT AND RT INLET EXTENSIONS	VERIFY VERTICAL CLEARANCE	CONFLICT RESOLVED WITH PROP IMPROVEMENTS	169
TRAFFIC (EXIST) COSA									
TRAFFIC SIGNAL LIGHT POLE #01	COSA	FREDERICKSBURG ROAD	22+37		37.4' LT	CONFLICT W/PROP SIDEWALK	RELOCATE TRAFFIC SIGNAL LIGHT POLE	COORDINATE W/COSA	7
TRAFFIC SIGNAL LIGHT POLE #02	COSA	FREDERICKSBURG ROAD	22+99		48' RT	CONFLICT W/PROP ADA RAMP	RELOCATE TRAFFIC SIGNAL LIGHT POLE	COORDINATE W/COSA	8
TRAFFIC PULL BOX	COSA	FREDERICKSBURG ROAD	22+09		52.6' RT	CONFLICT W/PROP ADA RAMP	RELOCATE TRAFFIC PULL BOX	COORDINATE W/COSA	9
TRAFFIC PULL BOX	COSA	FREDERICKSBURG ROAD	22+17		66' RT	CONFLICT W/PROP ADA RAMP	RELOCATE TRAFFIC PULL BOX	COORDINATE W/COSA	10
TRAFFIC PULL BOX	COSA	FREDERICKSBURG ROAD	22+17		55.9' RT	CONFLICT W/PROP ADA RAMP	RELOCATE TRAFFIC PULL BOX	COORDINATE W/COSA	11
TRAFFIC PULL BOX	COSA	FREDERICKSBURG ROAD	22+57		59.5' LT	CONFLICT W/PROP ADA RAMP	RELOCATE TRAFFIC PULL BOX	COORDINATE W/COSA	12
TRAFFIC PULL BOX	COSA	FREDERICKSBURG ROAD	22+53		98.3' LT	CONFLICT W/PROP ADA RAMP	RELOCATE TRAFFIC PULL BOX	COORDINATE W/COSA	13
TRAFFIC PULL BOX	COSA	FREDERICKSBURG ROAD	23+95		70.2' LT	CONFLICT W/PROP SIDEWALK	RELOCATE TRAFFIC PULL BOX	COORDINATE W/COSA	14

UTILITY CONFLICT MATRIX

Project Name: Fredericksburg Road
 Project No: 23-01582
 Prepared By: LEONARD D. YOUNG, PE
 Engineering Design Firm: YPR
 Submittal: % 95%
 Date: 11/13/20



UTILITY	OWNER	LOCATION	STATION			CONFLICT DESCRIPTION	RECOMMENDED ACTION REQ'D	STATUS	UTILITY CONFLICT ID	
LIGHT LUMINAIRE	COSA	FREDERICKSBURG ROAD	22+14		68.2'	RT	CONFLICT W/PROP ADA RAMP	VERIFY VERTICAL CLEARANCE	COORDINATE W/COSA	15
TRAFFIC SIGNAL LIGHT PEDESTAL	COSA	FREDERICKSBURG ROAD	22+12		60.1	RT	CONFLICT W/PROP SIDEWALK	RELOCATE TRAFFIC PEDESTAL	COORDINATE W/COSA	16
TRAFFIC SIGNAL LIGHT POLE #04	COSA	FREDERICKSBURG ROAD	25+43		33.10'	LT	CONFLICT W/PROP ADA RAMP	RELOCATE TRAFFIC SIGNAL LIGHT POLE	COORDINATE W/COSA	20
TRAFFIC PULL BOX	COSA	FREDERICKSBURG ROAD	25+44		32.00'	LT	CONFLICT W/PROP SIDEWALK	RELOCATE TRAFFIC PULL BOX	COORDINATE W/COSA	21
TRAFFIC SIGNAL LIGHT POLE #05	COSA	FREDERICKSBURG ROAD	25+31		45.0'	LT	CONFLICT W/PROP ADA RAMP	RELOCATE TRAFFIC SIGNAL LIGHT POLE	COORDINATE W/COSA	22
TRAFFIC PULL BOX	COSA	FREDERICKSBURG ROAD	25+22		39'	RT	CONFLICT W/PROP ADA RAMP	RELOCATE TRAFFIC PULL BOX	COORDINATE W/COSA	23
TRAFFIC PULL BOX	COSA	FREDERICKSBURG ROAD	25+31		39'	RT	CONFLICT W/PROP ADA RAMP	RELOCATE TRAFFIC PULL BOX	COORDINATE W/COSA	24
TRAFFIC PULL BOX	COSA	FREDERICKSBURG ROAD	24+01		66'	LT	CONFLICT W/PROP ADA RAMP	RELOCATE TRAFFIC PULL BOX	COORDINATE W/COSA	25
LIGHT LUMINAIRE	COSA	FREDERICKSBURG ROAD	24+09		67'	RT	CONFLICT W/PROP SIDEWALK	VERIFY VERTICAL CLEARANCE	COORDINATE W/COSA	26
TRAFFIC SIGNAL LIGHT POLE #06	COSA	FREDERICKSBURG ROAD	26+06		40.2'	RT	CONFLICT W/PROP CURB	RELOCATE TRAFFIC SIGNAL LIGHT POLE	COORDINATE W/COSA	31
TRAFFIC SIGNAL LIGHT POLE #07	COSA	FREDERICKSBURG ROAD	24+73		37.9'	LT	CONFLICT W/PROP CURB	RELOCATE TRAFFIC SIGNAL LIGHT POLE	COORDINATE W/COSA	32
TRAFFIC SIGNAL LIGHT POLE #10	COSA	FREDERICKSBURG ROAD	32+78		38.9'	LT	CONFLICT W/PROP CURB	RELOCATE TRAFFIC SIGNAL LIGHT POLE	COORDINATE W/COSA	33
TRAFFIC PULL BOX	COSA	FREDERICKSBURG ROAD	33+04		35.3'	LT	CONFLICT W/PROP CURB	RELOCATE TRAFFIC PULL BOX	COORDINATE W/COSA	34
TRAFFIC PULL BOX	COSA	FREDERICKSBURG ROAD	33+33		42.0'	LT	CONFLICT W/PROP SIDEWALK	VERTICAL ADJUSTMENT	COORDINATE W/COSA	35
TRAFFIC PULL BOX	COSA	FREDERICKSBURG ROAD	35+22		23.9'	LT	CONFLICT W/PROP SIDEWALK	VERTICAL ADJUSTMENT	COORDINATE W/COSA	36
TRAFFIC PULL BOX	COSA	FREDERICKSBURG ROAD	33+45		24.7'	RT	CONFLICT W/PROP SIDEWALK	VERTICAL ADJUSTMENT	COORDINATE W/COSA	37
TRAFFIC PULL BOX	COSA	FREDERICKSBURG ROAD	37+55		24.6'	LT	CONFLICT W/PROP SIDEWALK	VERTICAL ADJUSTMENT	COORDINATE W/COSA	38
TRAFFIC PULL BOX	COSA	FREDERICKSBURG ROAD	38+89		24.2'	LT	CONFLICT W/PROP SIDEWALK	VERTICAL ADJUSTMENT	COORDINATE W/COSA	39
TRAFFIC PULL BOX	COSA	FREDERICKSBURG ROAD	41+52		24.9'	LT	CONFLICT W/PROP SIDEWALK	VERTICAL ADJUSTMENT	COORDINATE W/COSA	75
TRAFFIC PULL BOX	COSA	FREDERICKSBURG ROAD	43+89		23.8'	RT	CONFLICT W/PROP SIDEWALK	VERTICAL ADJUSTMENT	COORDINATE W/COSA	76
TRAFFIC SIGNAL LIGHT POLE #11	COSA	FREDERICKSBURG ROAD	44+65		24.6'	LT	CONFLICT W/PROP SIDEWALK	RELOCATE TRAFFIC SIGNAL LIGHT POLE	COORDINATE W/CPS	77
TRAFFIC PULL BOX	COSA	FREDERICKSBURG ROAD	44+72		23.2'	LT	CONFLICT W/PROP SIDEWALK	VERTICAL ADJUSTMENT	COORDINATE W/TXDOT	78

UTILITY CONFLICT MATRIX

Project Name: Fredericksburg Road
 Project No: 23-01582
 Prepared By: LEONARD D. YOUNG, PE
 Engineering Design Firm: YPR
 Submittal: % 95%
 Date: 11/13/20



UTILITY	OWNER	LOCATION	STATION			CONFLICT DESCRIPTION	RECOMMENDED ACTION REQ'D	STATUS	UTILITY CONFLICT ID	
TRAFFIC SIGNAL LIGHT POLE #12	COSA	FREDERICKSBURG ROAD	45+01		24.6'	LT	CONFLICT W/PROP SIDEWALK	RELOCATE TRAFFIC SIGNAL LIGHT POLE	COORDINATE W/CPS	79
TRAFFIC SIGNAL LIGHT PEDESTAL	COSA	FREDERICKSBURG ROAD	45+83		25.8'	LT	CONFLICT W/PROP SIDEWALK	RELOCATE TRAFFIC PEDESTAL	COORDINATE W/CPS	80
TRAFFIC PULL BOX	COSA	FREDERICKSBURG ROAD	47+09		24.7'	LT	CONFLICT W/PROP SIDEWALK	VERTICAL ADJUSTMENT	COORDINATE W/COSA	81
TRAFFIC PULL BOX	COSA	FREDERICKSBURG ROAD	47+59		24.8'	LT	CONFLICT W/PROP SIDEWALK	VERTICAL ADJUSTMENT	COORDINATE W/COSA	82
TRAFFIC SIGNAL LIGHT POLE #13	COSA	FREDERICKSBURG ROAD	47+69		26.5'	LT	CONFLICT W/PROP SIDEWALK	RELOCATE TRAFFIC SIGNAL LIGHT POLE	COORDINATE W/CPS	83
TRAFFIC PULL BOX	COSA	FREDERICKSBURG ROAD	47+84		38.9'	LT	CONFLICT W/PROP SIDEWALK	VERTICAL ADJUSTMENT	COORDINATE W/COSA	84
TRAFFIC PULL BOX	COSA	FREDERICKSBURG ROAD	47+84		39.3'	LT	CONFLICT W/PROP SIDEWALK	VERTICAL ADJUSTMENT	COORDINATE W/COSA	85
TRAFFIC PULL BOX	COSA	FREDERICKSBURG ROAD	44+60		23.5'	RT	CONFLICT W/PROP SIDEWALK	VERTICAL ADJUSTMENT	COORDINATE W/TXDOT	87
TRAFFIC PULL BOX	COSA	FREDERICKSBURG ROAD	45+83		28.7'	RT	CONFLICT W/PROP SIDEWALK	VERTICAL ADJUSTMENT	COORDINATE W/COSA	88
TRAFFIC SIGNAL LIGHT POLE #14	COSA	FREDERICKSBURG ROAD	45+89		27.3'	RT	CONFLICT W/PROP SIDEWALK	RELOCATE TRAFFIC SIGNAL LIGHT POLE	COORDINATE W/COSA	89
TRAFFIC PULL BOX	COSA	FREDERICKSBURG ROAD	45+98		24.7'	RT	CONFLICT W/PROP SIDEWALK	VERTICAL ADJUSTMENT	COORDINATE W/COSA	91
TRAFFIC PULL BOX	COSA	FREDERICKSBURG ROAD	46+42		24.0'	RT	CONFLICT W/PROP SIDEWALK	VERTICAL ADJUSTMENT	COORDINATE W/COSA	92
TRAFFIC PULL BOX	COSA	FREDERICKSBURG ROAD	47+57		24.1'	RT	CONFLICT W/PROP SIDEWALK	VERTICAL ADJUSTMENT	COORDINATE W/COSA	93
TRAFFIC SIGNAL LIGHT PEDESTAL	COSA	FREDERICKSBURG ROAD	47+86		27.2'	RT	CONFLICT W/PROP SIDEWALK	RELOCATE TRAFFIC PEDESTAL	COORDINATE W/COSA	94
TRAFFIC SIGNAL LIGHT PEDESTAL	COSA	FREDERICKSBURG ROAD	48+66		29.6'	LT	CONFLICT W/PROP SIDEWALK	RELOCATE TRAFFIC PEDESTAL	COORDINATE W/COSA	99
TRAFFIC SIGNAL LIGHT POLE #15	COSA	FREDERICKSBURG ROAD	48+53		26.5'	RT	CONFLICT W/PROP SIDEWALK	RELOCATE TRAFFIC SIGNAL LIGHT POLE	COORDINATE W/COSA	100
TRAFFIC SIGNAL LIGHT POLE #16	COSA	FREDERICKSBURG ROAD	48+76		27.7'	RT	CONFLICT W/PROP SIDEWALK	RELOCATE TRAFFIC SIGNAL LIGHT POLE	COORDINATE W/COSA	101
TRAFFIC PULL BOX	COSA	FREDERICKSBURG ROAD	48+95		23.7'	LT	CONFLICT W/PROP SIDEWALK	VERTICAL ADJUSTMENT	COORDINATE W/TXDOT	102
TRAFFIC PULL BOX	COSA	FREDERICKSBURG ROAD	50+46		24.6'	LT	CONFLICT W/PROP SIDEWALK	VERTICAL ADJUSTMENT	COORDINATE W/COSA	103
TRAFFIC PULL BOX	COSA	FREDERICKSBURG ROAD	51+37		24.3'	LT	CONFLICT W/PROP SIDEWALK	VERTICAL ADJUSTMENT	COORDINATE W/COSA	104
TRAFFIC PULL BOX	COSA	FREDERICKSBURG ROAD	48+76		24.6'	RT	CONFLICT W/PROP SIDEWALK	VERTICAL ADJUSTMENT	COORDINATE W/TXDOT	105
TRAFFIC SIGNAL LIGHT POLE #17	COSA	FREDERICKSBURG ROAD	55+63		30.2'	LT	CONFLICT W/PROP SIDEWALK	RELOCATE TRAFFIC SIGNAL LIGHT POLE	COORDINATE W/COSA	106

UTILITY CONFLICT MATRIX

Project Name: Fredericksburg Road
 Project No: 23-01582
 Prepared By: LEONARD D. YOUNG, PE
 Engineering Design Firm: YPR
 Submittal: % 95%
 Date: 11/13/20



UTILITY	OWNER	LOCATION	STATION			CONFLICT DESCRIPTION	RECOMMENDED ACTION REQ'D	STATUS	UTILITY CONFLICT ID
TRAFFIC PULL BOX	COSA	FREDERICKSBURG ROAD	55+66		LT	CONFLICT W/PROP SIDEWALK	VERTICAL ADJUSTMENT	COORDINATE W/TXDOT	107
TRAFFIC PULL BOX	COSA	FREDERICKSBURG ROAD	52+66	22.9'	RT	CONFLICT W/PROP SIDEWALK	VERTICAL ADJUSTMENT	COORDINATE W/COSA	108
TRAFFIC PULL BOX	COSA	FREDERICKSBURG ROAD	53+57	23.0'	RT	CONFLICT W/PROP SIDEWALK	VERTICAL ADJUSTMENT	COORDINATE W/COSA	109
TRAFFIC PULL BOX	COSA	FREDERICKSBURG ROAD	54+64	23.2'	RT	CONFLICT W/PROP SIDEWALK	VERTICAL ADJUSTMENT	COORDINATE W/COSA	110
TRAFFIC PULL BOX	COSA	FREDERICKSBURG ROAD	55+71	35.8'	RT	CONFLICT W/PROP SIDEWALK	VERTICAL ADJUSTMENT	COORDINATE W/COSA	111
TRAFFIC SIGNAL LIGHT POLE #18	COSA	FREDERICKSBURG ROAD	55+89	25.9'	RT	CONFLICT W/PROP SIDEWALK	RELOCATE TRAFFIC SIGNAL LIGHT POLE	COORDINATE W/COSA	112
TRAFFIC SIGNAL LIGHT POLE #19	COSA	FREDERICKSBURG ROAD	56+52	35.0'	LT	CONFLICT W/PROP SIDEWALK	RELOCATE TRAFFIC SIGNAL LIGHT POLE	CONFLICT RESOLVED WITH PROP IMPROVEMENTS	129
TRAFFIC PULL BOX	COSA	FREDERICKSBURG ROAD	58+07	23.6'	LT	CONFLICT W/PROP SIDEWALK	VERTICAL ADJUSTMENT	COORDINATE W/COSA	131
TRAFFIC PULL BOX	COSA	FREDERICKSBURG ROAD	58+92	23.9'	LT	CONFLICT W/PROP SIDEWALK	VERTICAL ADJUSTMENT	COORDINATE W/COSA	132
TRAFFIC SIGNAL LIGHT POLE #20	COSA	FREDERICKSBURG ROAD	61+32	26.9'	LT	CONFLICT W/PROP SIDEWALK	RELOCATE TRAFFIC SIGNAL LIGHT POLE	COORDINATE W/COSA	150
TRAFFIC PULL BOX	COSA	FREDERICKSBURG ROAD	61+87	24.6'	LT	CONFLICT W/PROP SIDEWALK	VERTICAL ADJUSTMENT	COORDINATE W/COSA	151
TRAFFIC PULL BOX	COSA	FREDERICKSBURG ROAD	61+79	24.6'	RT	CONFLICT W/PROP SIDEWALK	VERTICAL ADJUSTMENT	COORDINATE W/COSA	151A
TRAFFIC PULL BOX	COSA	FREDERICKSBURG ROAD	67+53	22'	LT	CONFLICT W/PROP SIDEWALK	VERTICAL ADJUSTMENT	COORDINATE W/COSA	163
TRAFFIC PULL BOX	COSA	FREDERICKSBURG ROAD	67+53	22'	LT	CONFLICT W/PROP SIDEWALK	VERTICAL ADJUSTMENT	COORDINATE W/COSA	164
TRAFFIC SIGNAL LIGHT PEDESTAL	COSA	FREDERICKSBURG ROAD	65+44	27'	RT	CONFLICT W/PROP SIDEWALK	RELOCATE TRAFFIC SIGNAL LIGHT POLE	CONFLICT RESOLVED WITH PROP IMPROVEMENTS	165
ELECTRIC (EXIST) CPS									
ELECTRIC POLE #1	CPS	FREDERICKSBURG ROAD	25+76	23.7'	LT	CONFLICT W/PROP ADA RAMP	RELOCATE POWER POLE	COORDINATE W/CPS	27
ELECTRIC PULLBOX	CPS	FREDERICKSBURG ROAD	25+89	24.0'	LT	CONFLICT W/PROP SIDEWALK	RELOCATE PULLBOX	COORDINATE W/CPS	28
ELECTRIC POLE #2	CPS	FREDERICKSBURG ROAD	26+11	26.0'	LT	CONFLICT W/PROP ADA RAMP	RELOCATE POWER POLE	COORDINATE W/CPS	29
ELECTRIC PULLBOX	CPS	FREDERICKSBURG ROAD	26+12	23.1'	LT	CONFLICT W/PROP ADA RAMP	RELOCATE PULLBOX	COORDINATE W/CPS	30

UTILITY CONFLICT MATRIX

Project Name: Fredericksburg Road
 Project No: 23-01582
 Prepared By: LEONARD D. YOUNG, PE
 Engineering Design Firm: YPR
 Submittal: % 95%
 Date: 11/13/20



UTILITY	OWNER	LOCATION	STATION			CONFLICT DESCRIPTION	RECOMMENDED ACTION REQ'D	STATUS	UTILITY CONFLICT ID	
POWER POLE #14	CPS	FREDERICKSBURG ROAD	35+27		25.9'	LT	CONFLICT W/PROP SIDEWALK (REQUIRE 0.5 FEET OF ADA CLEARANCE)	RELOCATE POWER POLE	COORDINATE W/CPS	52
POWER POLE #15	CPS	FREDERICKSBURG ROAD	37+54		26.1'	LT	CONFLICT W/PROP SIDEWALK (REQUIRE 0.2 FEET OF ADA CLEARANCE)	RELOCATE POWER POLE	COORDINATE W/CPS	53
POWER POLE #17	CPS	FREDERICKSBURG ROAD	39+49		26.7'	LT	CONFLICT W/PROP SIDEWALK	RELOCATE POWER POLE	NO LONGER A CONFLICT(MEETS ADA CLEARANCE)	54
POWER POLE #18	CPS	FREDERICKSBURG ROAD	36+88		27.6'	RT	CONFLICT W/PROP DRIVEWAY	RELOCATE POWER POLE	COORDINATE W/CPS	55
GUY ANCHOR	CPS	FREDERICKSBURG ROAD	37+07		25.6'	RT	CONFLICT W/PROP SIDEWALK	POTENTIAL ADJUSTMENT	COORDINATE W/CPS	55A
POWER POLE #19	CPS	FREDERICKSBURG ROAD	40+80		28.0'	LT	CONFLICT W/PROP SIDEWALK	RELOCATE POWER POLE	NO LONGER A CONFLICT(MEETS ADA CLEARANCE)	69
POWER POLE #21	CPS	FREDERICKSBURG ROAD	43+30		29.7'	LT	CONFLICT W/PROP ADA RAMP	RELOCATE POWER POLE	COORDINATE W/CPS	70
POWER POLE # 23	CPS	FREDERICKSBURG ROAD	42+74		37.8'	RT	CONFLICT W/PROP SIDEWALK	RELOCATE POWER POLE	NO LONGER A CONFLICT(MEETS ADA CLEARANCE)	71
POWER POLE #24	CPS	FREDERICKSBURG ROAD	44+05		26.1'	LT	CONFLICT W/PROP SIDEWALK	RELOCATE POWER POLE	NO LONGER A CONFLICT(MEETS ADA CLEARANCE)	72
POWER POLE #25	CPS	FREDERICKSBURG ROAD	45+87		26.8'	LT	CONFLICT W/PROP ADA RAMP & PROP TRAF SIGNAL POLE	RELOCATE POWER POLE	COORDINATE W/CPS	73
POWER POLE #29	CPS	FREDERICKSBURG ROAD	47+34		27.6'	RT	CONFLICT W/PROP SIDEWALK	RELOCATE POWER POLE	NO LONGER A CONFLICT(MEETS ADA CLEARANCE)	74
ELECTRIC GUY DEADMAN POLE	CPS	FREDERICKSBURG ROAD	47+80		26.8'	LT	CONFLICT W/PROP SIDEWALK	RELOCATE POWER POLE	NO LONGER A CONFLICT(MEETS ADA CLEARANCE)	86
POWER POLE #30	CPS	FREDERICKSBURG ROAD	48+68		27.7'	LT	CONFLICT W/PROP SIDEWALK	RELOCATE POWER POLE	NO LONGER A CONFLICT(MEETS ADA CLEARANCE)	113
POWER POLE #31	CPS	UNIVERSITY AVE	10+46		18.5'	LT	CONFLICT W/PROP SIDEWALK	RELOCATE POWER POLE	COORDINATE W/CPS	114
POWER POLE #31A	CPS	UNIVERSITY AVE	10+88		17.9'	LT	CONFLICT W/PROP SIDEWALK (REQUIRE 1.5 FEET OF ADA CLEARANCE)	RELOCATE POWER POLE	COORDINATE W/CPS	115
POWER POLE #32	CPS	FREDERICKSBURG ROAD	49+99		25.9'	LT	CONFLICT W/PROP SIDEWALK & INLET	RELOCATE POWER POLE	COORDINATE W/CPS	116
POWER POLE #33	CPS	FREDERICKSBURG ROAD	51+61		25.5'	LT	CONFLICT W/PROP SIDEWALK (REQUIRE 0.5 FEET OF ADA CLEARANCE)	RELOCATE POWER POLE	COORDINATE W/CPS	117
POWER POLE #35	CPS	FREDERICKSBURG ROAD	51+10		27.0'	RT	CONFLICT W/PROP SIDEWALK	RELOCATE POWER POLE	NO LONGER A CONFLICT(MEETS ADA CLEARANCE)	118
POWER POLE #40	CPS	FREDERICKSBURG ROAD	55+73		42.4'	RT	CONFLICT W/PROP SIDEWALK	RELOCATE POWER POLE	CONFLICT RESOLVED WITH PROP IMPROVEMENTS	128
FIBER OPTIC MANHOLE	CPS	FREDERICKSBURG ROAD	72+93		23.4	RT	CONFLICT W/PROP SIDEWALK	ADJUST MANHOLE	COORDINATE W/CPS	174
GAS (EXIST) CPS										

UTILITY CONFLICT MATRIX

Project Name: Fredericksburg Road
 Project No: 23-01582
 Prepared By: LEONARD D. YOUNG, PE
 Engineering Design Firm: YPR
 Submittal: % 95%
 Date: 11/13/20



UTILITY	OWNER	LOCATION	STATION			CONFLICT DESCRIPTION	RECOMMENDED ACTION REQ'D	STATUS	UTILITY CONFLICT ID	
GAS LINE	CPS	FREDERICKSBURG ROAD	26+21	XING		LT	CONFLICT W/PROP ADA RAMP & ROADWAY	VERIFY VERTICAL CLEARANCE	COORDINATE W/CPS	55A
GAS LINE	CPS	FREDERICKSBURG ROAD	35+06	XING		LT	CONFLICT W/PROP SIDEWALK & ROADWAY	VERIFY VERTICAL CLEARANCE	COORDINATE W/CPS	55
GAS LINE	CPS	FREDERICKSBURG ROAD	35+72	XING		RT	CONFLICT W/PROP SIDEWALK & ROADWAY	VERIFY VERTICAL CLEARANCE	COORDINATE W/CPS	56
GAS LINE	CPS	FREDERICKSBURG ROAD	38+97	XING		LT	CONFLICT W/PROP SIDEWALK & ROADWAY	VERIFY VERTICAL CLEARANCE	COORDINATE W/CPS	56A
GAS LINE	CPS	PRINCETON AVE	10+75		9.45'	RT	CONFLICT W/PROP INLET	VERIFY VERTICAL CLEARANCE	COORDINATE W/CPS	56B
TH #07	POTHOLE	PRINCETON AVE	10+75		9.45'	RT	DEPTH TO TOP OF UTILITY 2.60'	AVOID THE INFRASTRUCTURE		
GAS LINE	CPS	FREDERICKSBURG ROAD	42+04	XING		LT	CONFLICT W/PROP SIDEWALK & ROADWAY	VERIFY VERTICAL CLEARANCE	COORDINATE W/CPS	98
TH #09	POTHOLE	FREDERICKSBURG ROAD	45+82		35.89'	RT	DEPTH TO TOP OF UTILITY 4.88'	AVOID THE INFRASTRUCTURE		
GAS LINE (FROM AS-BUILTS)	CPS	FREDERICKSBURG ROAD	45+88	XING		RT	CONFLICT W/PROP SIDEWALK & ROADWAY	VERIFY VERTICAL CLEARANCE	COORDINATE W/CPS	98A
GAS LINE	CPS	UNIVERSITY AVE	10+54		3.0'	RT	CONFLICT W/PROP INLET	VERIFY VERTICAL CLEARANCE	COORDINATE W/CPS	98B
TH #11	POTHOLE	UNIVERSITY AVE	10+54		3.0'	RT	DEPTH TO TOP OF UTILITY 4.81'	AVOID THE INFRASTRUCTURE		
GAS VALVE	CPS	FREDERICKSBURG ROAD	67+07		23.1'			1 RELOCATE GAS VALVE	COORDINATE W/CPS	167
WATER (EXIST) SAWS										
WATER METER	SAWS	N FLORES ST	22+54		71.7	LT	CONFLICT W/PROP SIDEWALK	VERTICAL ADJUSTMENT	COORDINATE W/SAWS	18
12" WATER MAIN	SAWS	FREDERICKSBURG ROAD	23+29	LONG			CONFLICT W/PROP ADA RAMP	VERIFY VERTICAL CLEARANCE	COORDINATE W/SAWS	18A
WATER METER	SAWS	N FLORES ST	22+46		130.6	LT	CONFLICT W/PROP SIDEWALK	VERTICAL ADJUSTMENT	COORDINATE W/SAWS	19
WATER METER	SAWS	N FLORES ST	12+84		30.7'	LT	CONFLICT W/PROP DRIVEWAY	VERTICAL ADJUSTMENT	COORDINATE W/SAWS	5A
TH #01	POTHOLE	FREDERICKSBURG ROAD	32+52		28'	RT	DEPTH TO TOP OF UTILITY 4.56'	AVOID THE INFRASTRUCTURE		
8" WATER MAIN	SAWS	FREDERICKSBURG ROAD	33+54	LONG	22.8	LT	CONFLICT W/PROP INLET	VERIFY VERTICAL CLEARANCE	COORDINATE W/SAWS	5B

UTILITY CONFLICT MATRIX

Project Name: Fredericksburg Road
 Project No: 23-01582
 Prepared By: LEONARD D. YOUNG, PE
 Engineering Design Firm: YPR
 Submittal: % 95%
 Date: 11/13/20



UTILITY	OWNER	LOCATION	STATION			CONFLICT DESCRIPTION	RECOMMENDED ACTION REQ'D	STATUS	UTILITY CONFLICT ID	
TH #02	POTHOLE	FREDERICKSBURG ROAD	33+74		22.8'	LT	DEPTH TO TOP OF UTILITY 3.02'	AVOID THE INFRASTRUCTURE		
TH #03	POTHOLE	FREDERICKSBURG ROAD	34+90		21.6'	LT	DEPTH TO TOP OF UTILITY 4.42'	AVOID THE INFRASTRUCTURE		
8" WATER MAIN	SAWS	FREDERICKSBURG ROAD	34+84	LONG	22.5'	LT	CONFLICT W/PROP INLET	VERIFY VERTICAL CLEARANCE	COORDINATE W/SAWS	5C
WATER METER	SAWS	FREDERICKSBURG ROAD	35+29		25.5'	LT	CONFLICT W/PROP SIDEWALK	VERTICAL ADJUSTMENT	COORDINATE W/SAWS	40
WATER METER	SAWS	FREDERICKSBURG ROAD	33+80		27.6'	RT	CONFLICT W/PROP DRIVEWAY	VERTICAL ADJUSTMENT	COORDINATE W/SAWS	41
WATER VALVE	SAWS	FREDERICKSBURG ROAD	37+68		20.6'	LT	CONFLICT W/PROP SIDEWALK	VERTICAL ADJUSTMENT	COORDINATE W/SAWS	42
8" PVC WATER MAIN	SAWS	FREDERICKSBURG ROAD	37+68	LONG			CONFLICT W/PROP SIDEWALK	VERIFY VERTICAL CLEARANCE	COORDINATE W/SAWS	43
WATER VALVE	SAWS	FREDERICKSBURG ROAD	37+69		18.3'	LT	CONFLICT W/PROP SIDEWALK	VERTICAL ADJUSTMENT	COORDINATE W/SAWS	44
WATER METER	SAWS	FREDERICKSBURG ROAD	39+93		25.2'	LT	CONFLICT W/PROP SIDEWALK	VERTICAL ADJUSTMENT	COORDINATE W/SAWS	45
WATER METER	SAWS	FREDERICKSBURG ROAD	39+95		24.7'	LT	CONFLICT W/PROP SIDEWALK	VERTICAL ADJUSTMENT	COORDINATE W/SAWS	46
WATER METER	SAWS	FREDERICKSBURG ROAD	36+29		25.6'	RT	CONFLICT W/PROP SIDEWALK	VERTICAL ADJUSTMENT	COORDINATE W/SAWS	47
TH #04	POTHOLE	FREDERICKSBURG ROAD	40+05		19.8'	LT	DEPTH TO TOP OF UTILITY 4.23'	AVOID THE INFRASTRUCTURE		
8" DI WATER MAIN	SAWS	FREDERICKSBURG ROAD	40+75		74+30	LT	CONFLICT W/PROP CURB INLET	VERIFY VERTICAL CLEARANCE	COORDINATE W/SAWS	57
6" AC WATER MAIN	SAWS	FREDERICKSBURG ROAD	40+76	XING			CONFLICT W/PROP DRIVEWAY	VERIFY VERTICAL CLEARANCE	COORDINATE W/SAWS	58
WATER VALVE	SAWS	FREDERICKSBURG ROAD	40+76		20.8'	LT	CONFLICT W/PROP DRIVEWAY	VERTICAL ADJUSTMENT	COORDINATE W/SAWS	59
TH #05	POTHOLE	FREDERICKSBURG ROAD	41+60		20.4'	LT	DEPTH TO TOP OF UTILITY 4.00'	AVOID THE INFRASTRUCTURE		
WATER METER	SAWS	FREDERICKSBURG ROAD	41+99		26.9'	LT	CONFLICT W/PROP DRIVEWAY	VERTICAL ADJUSTMENT	COORDINATE W/SAWS	60
WATER METER	SAWS	FREDERICKSBURG ROAD	42+56		27.6'	LT	CONFLICT W/PROP SIDEWALK	VERTICAL ADJUSTMENT	COORDINATE W/SAWS	61
8" DI WATER MAIN	SAWS	FREDERICKSBURG ROAD	43+16	XING		LT	CONFLICT W/PROP SIDEWALK	VERIFY VERTICAL CLEARANCE	COORDINATE W/SAWS	62
WATER VALVE	SAWS	FREDERICKSBURG ROAD	43+16		22.3'	LT	CONFLICT W/PROP SIDEWALK	VERTICAL ADJUSTMENT	COORDINATE W/SAWS	63
WATER METER	SAWS	FREDERICKSBURG ROAD	41+75		26.4'	RT	CONFLICT W/PROP SIDEWALK	VERTICAL ADJUSTMENT	COORDINATE W/SAWS	65
TH #06	POTHOLE	PRINCETON AVE	10+75		11.3'	LT	DEPTH TO TOP OF UTILITY 3.19'	AVOID THE INFRASTRUCTURE		

UTILITY CONFLICT MATRIX

Project Name: Fredericksburg Road
 Project No: 23-01582
 Prepared By: LEONARD D. YOUNG, PE
 Engineering Design Firm: YPR
 Submittal: % 95%
 Date: 11/13/20



UTILITY	OWNER	LOCATION	STATION			CONFLICT DESCRIPTION	RECOMMENDED ACTION REQ'D	STATUS	UTILITY CONFLICT ID	
6" DI WATER MAIN	SAWS	PRINCETON AVE	10+75		11.3'	LT	CONFLICT W/PROP INLET	VERIFY VERTICAL CLEARANCE	COORDINATE W/SAWS	56C
8" DI WATER MAIN	SAWS	FREDERICKSBURG ROAD	43+98		44+42	LT	CONFLICT W/PROP INLET	ADJUST EXISTING INLET	COORDINATE W/SAWS	66
8" DI WATER MAIN	SAWS	FREDERICKSBURG ROAD	46+79		17.7'	LT	CONFLICT W/PROP STORM DRAIN	VERTICAL ADJUSTMENT	COORDINATE W/SAWS	66A
WATER METER	SAWS	FREDERICKSBURG ROAD	45+24		27.0'	LT	CONFLICT W/PROP SIDEWALK	VERTICAL ADJUSTMENT	COORDINATE W/SAWS	67
WATER METER	SAWS	UNIVERSITY AVE	10+38		28.9'	LT	CONFLICT W/PROP SIDEWALK	VERTICAL ADJUSTMENT	COORDINATE W/SAWS	122
WATER METER	SAWS	UNIVERSITY AVE	10+39		23.2'	LT	CONFLICT W/PROP SIDEWALK	VERTICAL ADJUSTMENT	COORDINATE W/SAWS	123
TH #08	POTHOLE	FREDERICKSBURG ROAD	44+17		20.0'	LT	DEPTH TO TOP OF UTILITY 3.08'	AVOID THE INFRASTRUCTURE		
TH #10	POTHOLE	FREDERICKSBURG ROAD	46+79		17.7'	LT	DEPTH TO TOP OF UTILITY 5.32'	AVOID THE INFRASTRUCTURE		
WATER METER	SAWS	FREDERICKSBURG ROAD	48+66		27.0'	RT	CONFLICT W/PROP SIDEWALK	VERTICAL ADJUSTMENT	COORDINATE W/SAWS	124
TH #12	POTHOLE	UNIVERSITY AVE	10+54		7.2'	RT	DEPTH TO TOP OF UTILITY 2.83'	AVOID THE INFRASTRUCTURE		
WATER MAIN	SAWS	UNIVERSITY AVE	10+54		7.2'	RT	CONFLICT W/PROP INLET	VERTICAL ADJUSTMENT	COORDINATE W/SAWS	123A
WATER METER	SAWS	FREDERICKSBURG ROAD	52+64		27.6'	RT	CONFLICT W/PROP SIDEWALK	VERTICAL ADJUSTMENT	COORDINATE W/SAWS	125
WATER METER	SAWS	FREDERICKSBURG ROAD	54+74			LT	CONFLICT W/PROP SIDEWALK	VERTICAL ADJUSTMENT	COORDINATE W/SAWS	126
TH #14	POTHOLE	FREDERICKSBURG ROAD	56+46		31.3'	LT	DEPTH TO TOP OF UTILITY 5.58'	AVOID THE INFRASTRUCTURE		
TH #15	POTHOLE	FREDERICKSBURG ROAD	56+91		15.7'	LT	DEPTH TO TOP OF UTILITY 3.78'	AVOID THE INFRASTRUCTURE		
8" DI WATER MAIN	SAWS	FREDERICKSBURG ROAD	56+91		15.6'	LT	CONFLICT W/PROP STORM DRAIN	VERTICAL ADJUSTMENT	COORDINATE W/SAWS	133A
WATER METER	SAWS	FREDERICKSBURG ROAD	57+94		26.4'	LT	CONFLICT W/PROP SIDEWALK	VERTICAL ADJUSTMENT	CONFLICT RESOLVED WITH PROP IMPROVEMENTS	130
WATER VALVE	SAWS	FREDERICKSBURG ROAD	61+09		13.3'	LT	CONFLICT W/PROP SIDEWALK	VERTICAL ADJUSTMENT	COORDINATE W/SAWS	136
WATER VALVE	SAWS	FREDERICKSBURG ROAD	61+18		12.6'	LT	CONFLICT W/PROP SIDEWALK	VERTICAL ADJUSTMENT	COORDINATE W/SAWS	137
WATER METER	SAWS	FREDERICKSBURG ROAD	62+47		25.0'	LT	CONFLICT W/PROP SIDEWALK	VERTICAL ADJUSTMENT	COORDINATE W/SAWS	138
WATER METER	SAWS	FREDERICKSBURG ROAD	63+49		25.2'	LT	CONFLICT W/PROP SIDEWALK	VERTICAL ADJUSTMENT	COORDINATE W/SAWS	139
WATER METER	SAWS	FREDERICKSBURG ROAD	63+51		26.0'	LT	CONFLICT W/PROP SIDEWALK	VERTICAL ADJUSTMENT	COORDINATE W/SAWS	140

UTILITY CONFLICT MATRIX

Project Name: Fredericksburg Road
 Project No: 23-01582
 Prepared By: LEONARD D. YOUNG, PE
 Engineering Design Firm: YPR
 Submittal: % 95%
 Date: 11/13/20



UTILITY	OWNER	LOCATION	STATION			CONFLICT DESCRIPTION	RECOMMENDED ACTION REQ'D	STATUS	UTILITY CONFLICT ID	
WATER METER	SAWS	FREDERICKSBURG ROAD	63+53		25.9'	LT	CONFLICT W/PROP SIDEWALK	VERTICAL ADJUSTMENT	COORDINATE W/SAWS	141
WATER METER	SAWS	FREDERICKSBURG ROAD	63+55		25.7'	LT	CONFLICT W/PROP SIDEWALK	VERTICAL ADJUSTMENT	COORDINATE W/SAWS	142
WATER METER	SAWS	FREDERICKSBURG ROAD	63+56		25.9'	LT	CONFLICT W/PROP SIDEWALK	VERTICAL ADJUSTMENT	COORDINATE W/SAWS	143
WATER METER	SAWS	FREDERICKSBURG ROAD	61+29		25.6'	RT	CONFLICT W/PROP SIDEWALK	VERTICAL ADJUSTMENT	COORDINATE W/SAWS	144
WATER METER	SAWS	FREDERICKSBURG ROAD	61+30		25.5'	RT	CONFLICT W/PROP SIDEWALK	VERTICAL ADJUSTMENT	COORDINATE W/SAWS	145
WATER METER	SAWS	FREDERICKSBURG ROAD	61+32		25.6'	RT	CONFLICT W/PROP SIDEWALK	VERTICAL ADJUSTMENT	COORDINATE W/SAWS	146
WATER METER	SAWS	FREDERICKSBURG ROAD	63+36		24.5'	RT	CONFLICT W/PROP SIDEWALK	VERTICAL ADJUSTMENT	COORDINATE W/SAWS	147
WATER METER	SAWS	FREDERICKSBURG ROAD	63+37		23.9'	RT	CONFLICT W/PROP SIDEWALK	VERTICAL ADJUSTMENT	COORDINATE W/SAWS	148
WATER METER	SAWS	FREDERICKSBURG ROAD	63+38		24.4'	RT	CONFLICT W/PROP SIDEWALK	VERTICAL ADJUSTMENT	COORDINATE W/SAWS	149
6" DI WATER MAIN	SAWS	W FRENCH PL	10+37		9'	LT	CONFLICT W/PROP INLET	VERTICAL ADJUSTMENT	COORDINATE W/SAWS	154
WATER VALVE	SAWS	FREDERICKSBURG ROAD	66+71		25'	LT	CONFLICT W/PROP SIDEWALK	VERTICAL ADJUSTMENT	COORDINATE W/SAWS	155
WATER METER	SAWS	FREDERICKSBURG ROAD	67+33		26.5'	RT	CONFLICT W/PROP SIDEWALK	VERTICAL ADJUSTMENT	CONFLICT RESOLVED WITH PROP IMPROVEMENTS	156
WATER METER	SAWS	FREDERICKSBURG ROAD	68+30		26.1'	LT	CONFLICT W/PROP SIDEWALK	VERTICAL ADJUSTMENT	COORDINATE W/SAWS	157
WATER METER	SAWS	FREDERICKSBURG ROAD	68+34		26.1'	LT	CONFLICT W/PROP SIDEWALK	VERTICAL ADJUSTMENT	COORDINATE W/SAWS	158
WATER METER	SAWS	FREDERICKSBURG ROAD	68+52		25.2'	LT	CONFLICT W/PROP SIDEWALK	VERTICAL ADJUSTMENT	COORDINATE W/SAWS	159
WATER METER	SAWS	FREDERICKSBURG ROAD	69+62		26.4'	LT	CONFLICT W/PROP SIDEWALK	VERTICAL ADJUSTMENT	COORDINATE W/SAWS	160
WATER VALVE	SAWS	FREDERICKSBURG ROAD	69+89		19.3'	LT	CONFLICT W/PROP SIDEWALK	VERTICAL ADJUSTMENT	COORDINATE W/SAWS	161
WATER VALVE	SAWS	FREDERICKSBURG ROAD	69+91		18.2'	LT	CONFLICT W/PROP SIDEWALK	VERTICAL ADJUSTMENT	COORDINATE W/SAWS	162
TH #16	POTHOLE	FREDERICKSBURG ROAD	70+19		17.45'	LT	DEPTH TO TOP OF UTILITY 4.05'	AVOID THE INFRASTRUCTURE		
FIRE HYDRANT	SAWS	FREDERICKSBURG ROAD	72+05		26.8'	LT	CONFLICT W/PROP SIDEWALK	VERTICAL ADJUSTMENT	COORDINATE W/SAWS	170
8" DI WATER MAIN	SAWS	FREDERICKSBURG ROAD	72+21		20'	LT	CONFLICT W/PROP STORM DRAIN	ADJUST EXISTING INLET	COORDINATE W/SAWS	171
TH #17	POTHOLE	FREDERICKSBURG ROAD	72+21		20.2'	LT	DEPTH TO TOP OF UTILITY 4.23'	AVOID THE INFRASTRUCTURE		

UTILITY CONFLICT MATRIX

Project Name: Fredericksburg Road
 Project No: 23-01582
 Prepared By: LEONARD D. YOUNG, PE
 Engineering Design Firm: YPR
 Submittal: % 95%
 Date: 11/13/20



UTILITY	OWNER	LOCATION	STATION			CONFLICT DESCRIPTION	RECOMMENDED ACTION REQ'D	STATUS	UTILITY CONFLICT ID	
8" DI WATER MAIN	SAWS	FREDERICKSBURG ROAD	73+63		73+83	LT	CONFLICT W/PROP INLET	ADJUST EXISTING INLET	COORDINATE W/SAWS	172
FIRE HYDRANT	SAWS	W CRAIG PLACE	10+51		18.3'	RT	CONFLICT W/PROP SIDEWALK	VERTICAL ADJUSTMENT	COORDINATE W/SAWS	175
SEWER (EXIST) SAWS										
SEWER MANHOLE	SAWS	FREDERICKSBURG ROAD	40+71		24.0'	LT	CONFLICT W/PROP SIDEWALK	VERIFY VERTICAL CLEARANCE	COORDINATE W/SAWS	68

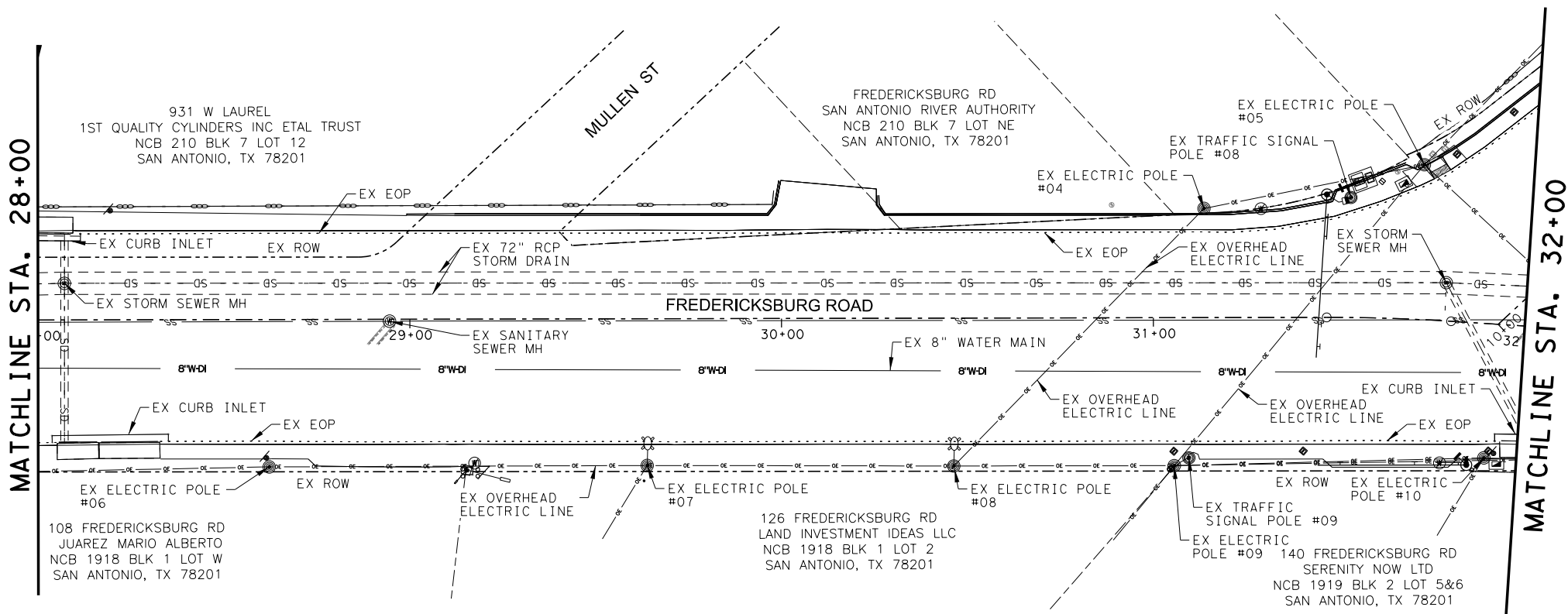
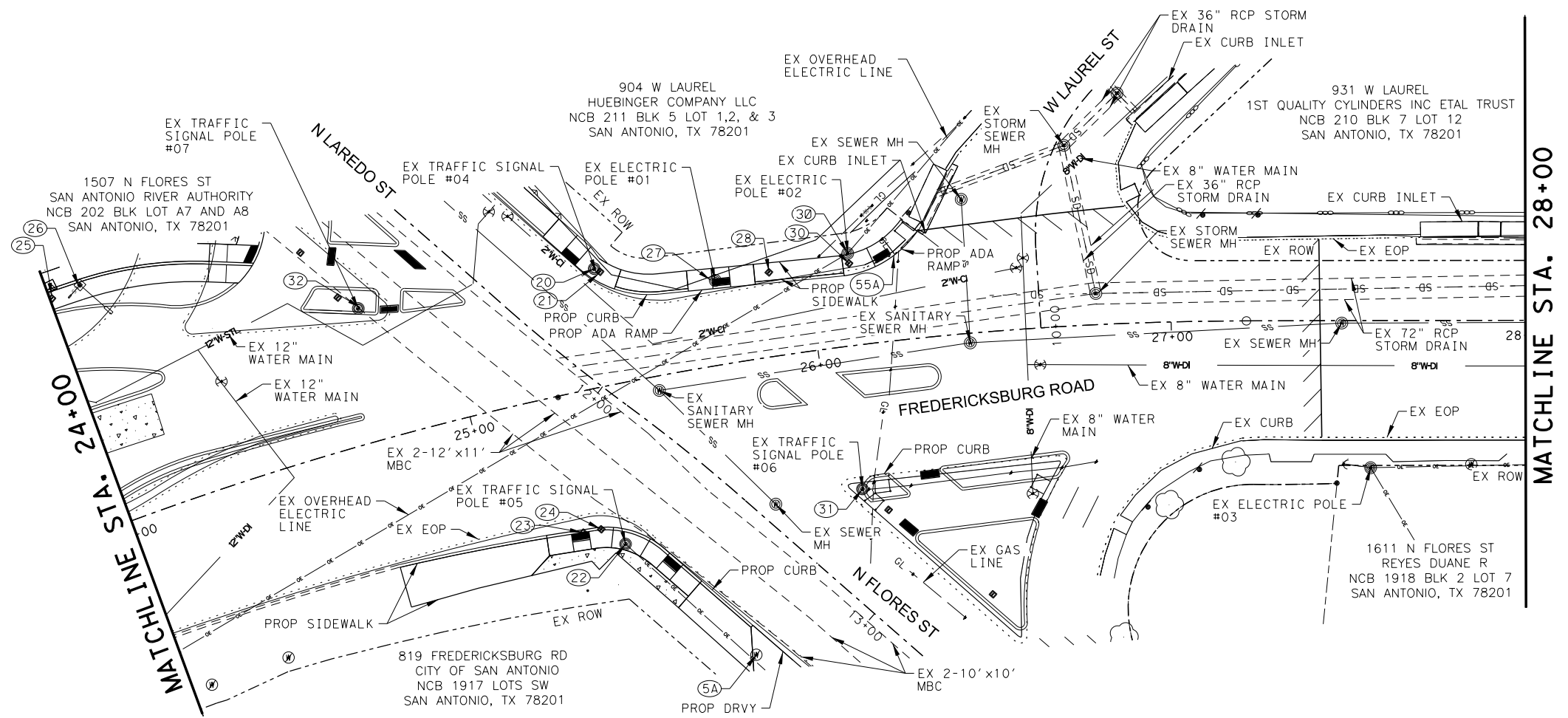
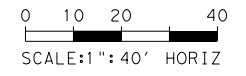
Plotted on: 11/13/2020 10:56:23 AM
 File name: P:\Projects\City of San Antonio\Fredricksburg Road 2017 Bond\Drawings\FRED-UTIL-LAYOUT*02.dgn

LEGEND

- AT&T U/G COMMUNICATION
- CENTURY LINK U/G COMMUNICATION
- GRANDE U/G COMMUNICATION
- CPS U/G ELECTRIC
- OE ——— CPS O/H ELECTRIC
- GL ——— CPS U/G GAS
- SS ——— SAWS SANITARY SEWER
- W ——— SAWS WATER
- SD ——— STORM SEWER
- ⊙ COMMUNICATION MANHOLE
- ⊙ CPS ELECTRIC MANHOLE
- ⊙ EX TRAFFIC POLE/CPS POLE
- ⊙ SAWS FIRE HYDRANT
- ⊙ SAWS SANITARY SEWER MANHOLE
- ⊙ STORM SEWER MANHOLE
- ⊙ EX WTR METER
- ⊙ SAWS WATER VALVE
- ⊙ TELEPHONE MANHOLE
- ⊙ UTILITY CONFLICT
- FOL — PROP FIBER OPTIC
- DB — PROP MCI
- ⊙ SUE TEST HOLE
- ⊙ EX SIGN

- NOTES:**
- THE LOCATIONS OF THE EXISTING UTILITIES SHOWN ARE TAKEN FROM THE BEST INFORMATION AVAILABLE. THEY ARE NOT GUARANTEED TO BE ACCURATE AND MUST BE VERIFIED BY THE CONTRACTOR BEFORE THE START OF CONSTRUCTION.
 - THE CONTRACTOR SHALL BE HELD RESPONSIBLE FOR ANY DAMAGE TO UTILITIES.

CONTRACTOR SHALL BE RESPONSIBLE FOR LOCATING ALL UTILITIES WHETHER PUBLIC OR PRIVATE, PRIOR TO CONSTRUCTION



95% PRELIMINARY SUBMITTAL

PRELIMINARY FOR REVIEW ONLY

THESE DOCUMENTS ARE PRELIMINARY AND SUBJECT TO CHANGE. THEY ARE NOT INTENDED FOR CONSTRUCTION OR PERMIT PURPOSES. THEY WERE PREPARED BY, OR UNDER THE SUPERVISION OF:

LEONARD D. YOUNG	61852	11/13/2020
NAME	P.E. #	DATE

NO	DATE	DESCRIPTION	DWG	CHK



YOUNG PROFESSIONAL RESOURCES
 8209 Roughrider Drive, Suite 101 Windcrest, TX 78239
 Tel. (210) 590-9215 Fax (210) 590-9346
 Young Professional Resources
 Registration No. F-8635

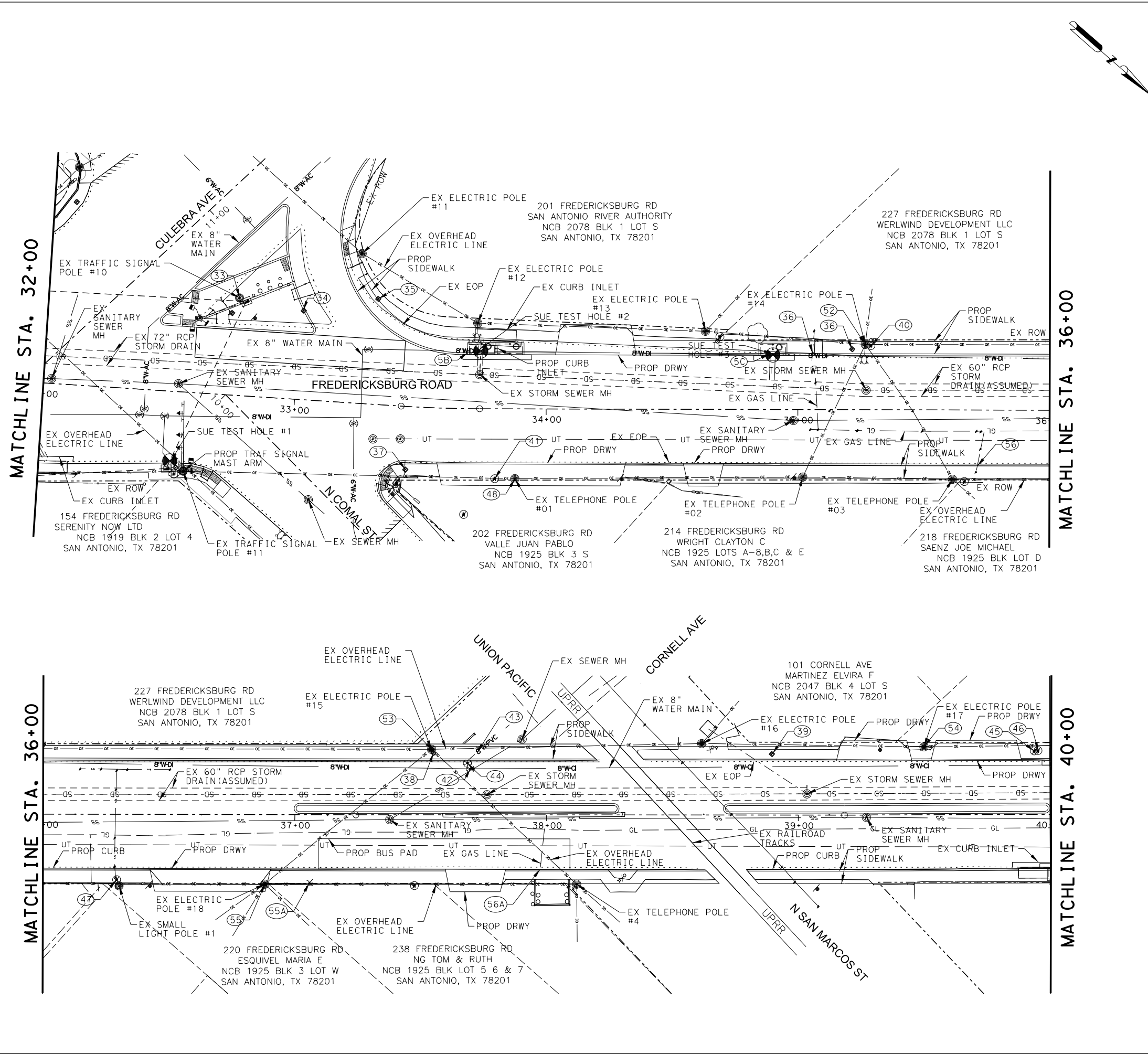


<http://www.pozcam.com/>
 5835 CALLAGHAN RD., SUITE 200
 SAN ANTONIO, TEXAS, 78228
 TBPE REG. NO. F-483
 (210) 349-3273 (210) 349-4395 (FAX)

CITY OF SAN ANTONIO
PUBLIC WORKS

FREDERICKSBURG RD - BASE BID
 N FLORES ST TO CINCINNATI AVE
 UTILITY BASEMAP LAYOUT
 STA. 24+00 - STA. 32+00

95% DESIGN	PROJECT NO. 23-01582	DATE 11/13/2020	SHEET 02 OF 05
DRWN. BY: AAM	DSGN. BY: AAM	CHKD. BY: JIN	SHEET No. 234

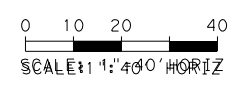


LEGEND

- AT&T U/G COMMUNICATION
- CENTURY LINK U/G COMMUNICATION
- GRANDE U/G COMMUNICATION
- CPS U/G ELECTRIC
- OE --- CPS O/H ELECTRIC
- GL --- CPS U/G GAS
- SS --- SAWS SANITARY SEWER
- W --- SAWS WATER
- SD --- STORM SEWER
- ⊙ COMMUNICATION MANHOLE
- ⊙ CPS ELECTRIC MANHOLE
- ⊙ EX TRAFFIC POLE/CPS POLE
- ⊙ SAWS FIRE HYDRANT
- ⊙ SAWS SANITARY SEWER MANHOLE
- ⊙ SD STORM SEWER MANHOLE
- ⊙ EX WTR METER
- ⊙ SAWS WATER VALVE
- ⊙ TELEPHONE MANHOLE
- ⊙ UTILITY CONFLICT
- FOL --- PROP FIBER OPTIC
- DB --- PROP MCI
- ⊙ SUE TEST HOLE
- ⊙ EX SIGN

- NOTES:
1. THE LOCATIONS OF THE EXISTING UTILITIES SHOWN ARE TAKEN FROM THE BEST INFORMATION AVAILABLE. THEY ARE NOT GUARANTEED TO BE ACCURATE AND MUST BE VERIFIED BY THE CONTRACTOR BEFORE THE START OF CONSTRUCTION.
 2. THE CONTRACTOR SHALL BE HELD RESPONSIBLE FOR ANY DAMAGE TO UTILITIES.

CONTRACTOR SHALL BE RESPONSIBLE FOR LOCATING ALL UTILITIES WHETHER PUBLIC OR PRIVATE, PRIOR TO CONSTRUCTION



95% PRELIMINARY SUBMITTAL

PRELIMINARY FOR REVIEW ONLY

THESE DOCUMENTS ARE PRELIMINARY AND SUBJECT TO CHANGE. THEY ARE NOT INTENDED FOR CONSTRUCTION OR PERMIT PURPOSES. THEY WERE PREPARED BY, OR UNDER THE SUPERVISION OF:

LEONARD D. YOUNG	61852	11/13/2020
NAME	P.E. #	DATE

NO	DATE	DESCRIPTION	DWG	CHK
REVISIONS				

YOUNG PROFESSIONAL RESOURCES
8209 Roughrider Drive, Suite 101 Windcrest, TX 78239
Tel. (210) 590-9215 Fax (210) 590-9346
Young Professional Resources
Registration No. F-8635

POZNECKI CAMARILLO
http://www.pozcam.com/
5835 CALLAGHAN RD., SUITE 200
SAN ANTONIO, TEXAS, 78228
TBP REG. NO. F-483
(210) 349-3273 (210) 349-4395 (FAX)

CITY OF SAN ANTONIO
PUBLIC WORKS

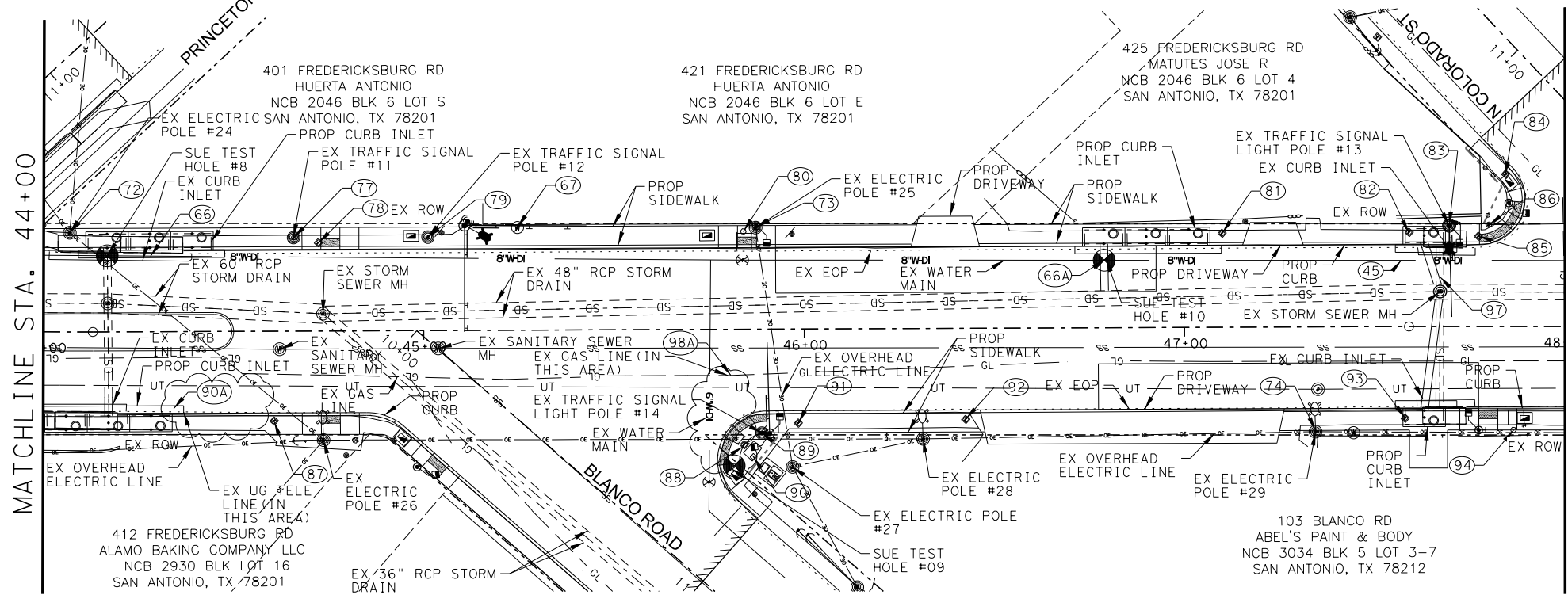
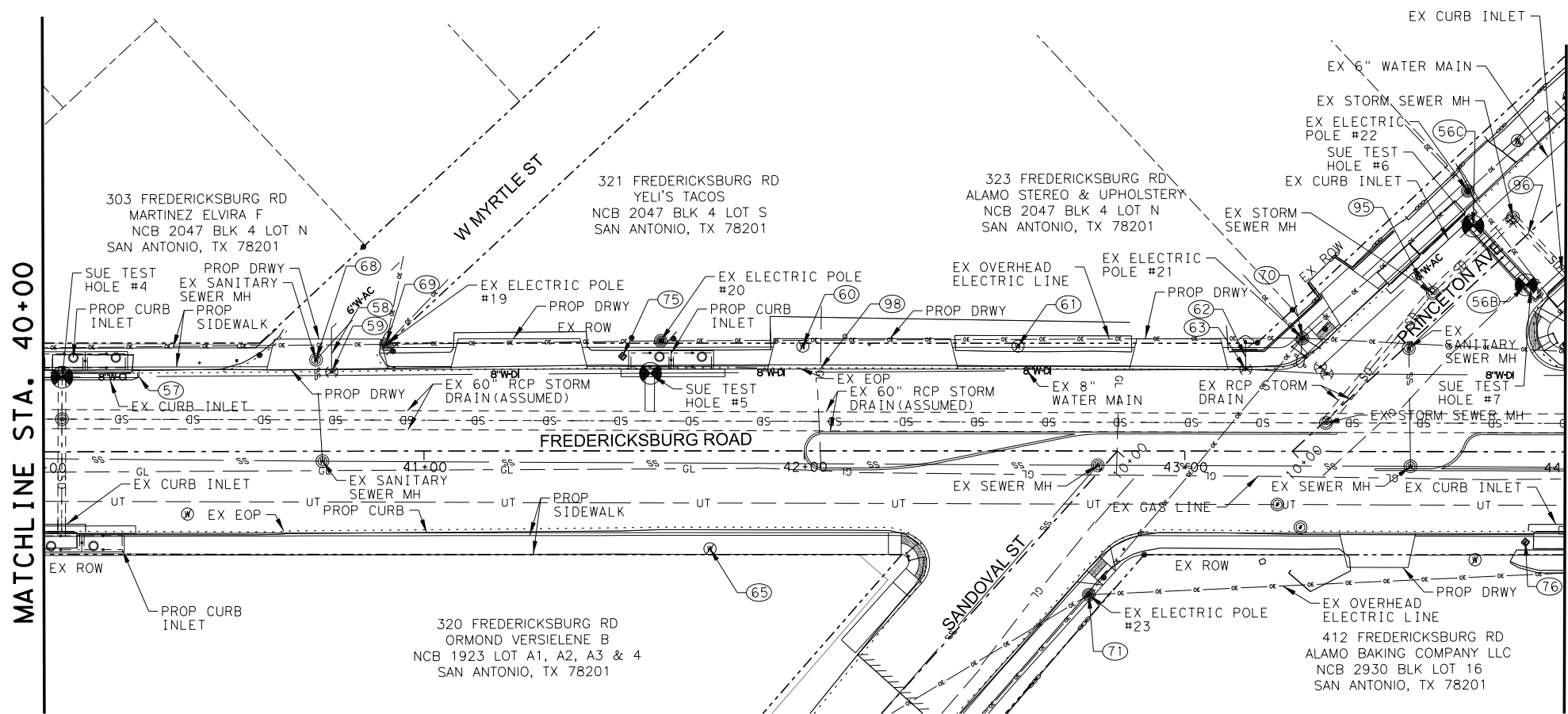
FREDERICKSBURG RD - BASE BID
N FLORES ST TO CINCINNATI AVE
UTILITY BASEMAP LAYOUT
STA. 32+00 - STA. 40+00

SHEET 03 OF 05

95% DESIGN	PROJECT NO. 23-01582	DATE 11/13/2020
DRWN. BY: AAM	DSGN. BY: AAM	CHKD. BY: JIN
SHEET No: 235		

Plotted on: \$DATE\$ \$TIME\$

Filename: \$FILE\$

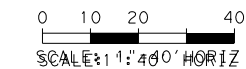


LEGEND

- AT&T U/G COMMUNICATION
- CENTURY LINK U/G COMMUNICATION
- GRANDE U/G COMMUNICATION
- CPS U/G ELECTRIC
- OE --- CPS O/H ELECTRIC
- GL --- CPS U/G GAS
- SS --- SAWS SANITARY SEWER
- W --- SAWS WATER
- SD --- STORM SEWER
- ⊙ COMMUNICATION MANHOLE
- ⊙ CPS ELECTRIC MANHOLE
- ⊙ EX TRAFFIC POLE/CPS POLE
- ⊙ SAWS FIRE HYDRANT
- ⊙ SAWS SANITARY SEWER MANHOLE
- ⊙ SD STORM SEWER MANHOLE
- ⊙ EX WTR METER
- ⊙ SAWS WATER VALVE
- ⊙ TELEPHONE MANHOLE
- ⊙ UTILITY CONFLICT
- FOL --- PROP FIBER OPTIC
- DB --- PROP MCI
- ⊙ SUE TEST HOLE
- ⊙ EX SIGN

- NOTES:
1. THE LOCATIONS OF THE EXISTING UTILITIES SHOWN ARE TAKEN FROM THE BEST INFORMATION AVAILABLE. THEY ARE NOT GUARANTEED TO BE ACCURATE AND MUST BE VERIFIED BY THE CONTRACTOR BEFORE THE START OF CONSTRUCTION.
 2. THE CONTRACTOR SHALL BE HELD RESPONSIBLE FOR ANY DAMAGE TO UTILITIES.

CONTRACTOR SHALL BE RESPONSIBLE FOR LOCATING ALL UTILITIES WHETHER PUBLIC OR PRIVATE, PRIOR TO CONSTRUCTION

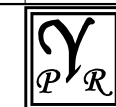


95% PRELIMINARY SUBMITTAL
PRELIMINARY FOR REVIEW ONLY

THESE DOCUMENTS ARE PRELIMINARY AND SUBJECT TO CHANGE. THEY ARE NOT INTENDED FOR CONSTRUCTION OR PERMIT PURPOSES. THEY WERE PREPARED BY, OR UNDER THE SUPERVISION OF:

LEONARD D. YOUNG 61852 11/13/2020
NAME P.E.# DATE

NO	DATE	DESCRIPTION	DWG	CHK
		REVISIONS		



YOUNG PROFESSIONAL RESOURCES
8209 Roughrider Drive, Suite 101 Windcrest, TX 78239
Tel. (210) 590-9215 Fax (210) 590-9346
Young Professional Resources
Registration No. F-8635



POZNECKI CAMARILLO INC.
5835 CALLAGHAN RD., SUITE 200
SAN ANTONIO, TEXAS, 78228
TBP REG. NO. F-483
(210) 349-3273 (210) 349-4395 (FAX)

CITY OF SAN ANTONIO
PUBLIC WORKS

FREDERICKSBURG RD - BASE BID
N FLORES ST TO CINCINNATI AVE
UTILITY BASEMAP LAYOUT
STA. 40+00 - STA. 48+00

SHEET 04 OF 05

95% DESIGN	PROJECT NO. 23-01582	DATE 11/13/2020
DRWN. BY: AAM	DSGN. BY: AAM	CHKD. BY: JIN
		SHEET No. 236

Plotted on: \$DATE\$

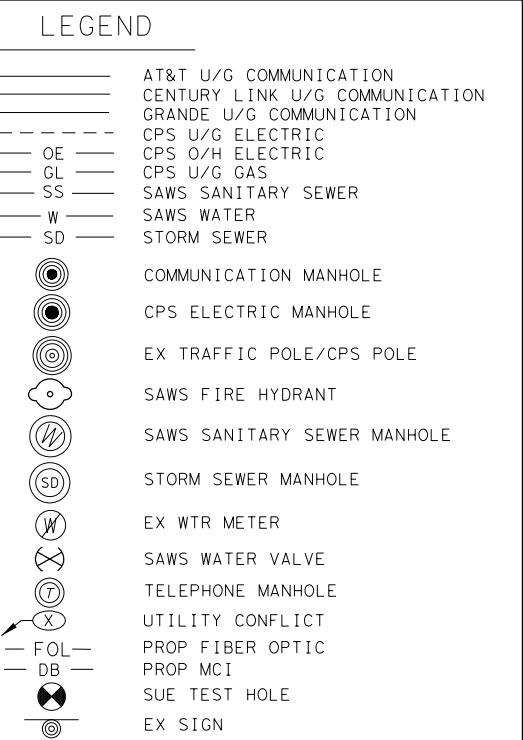
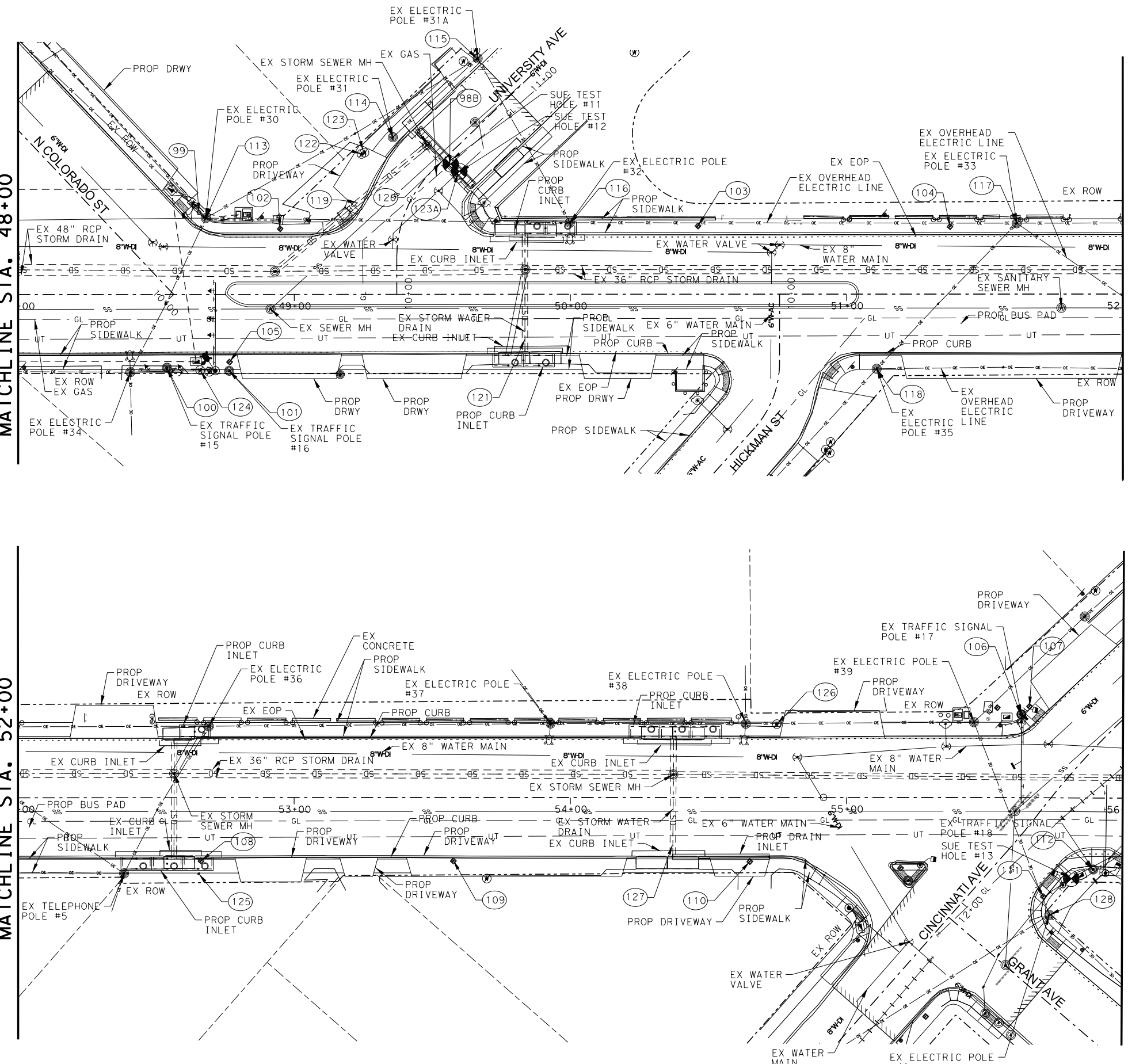
Filename: \$FILE\$

MATCHLINE STA. 48+00

MATCHLINE STA. 52+00

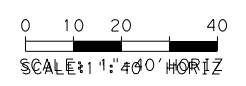
MATCHLINE STA. 52+00

MATCHLINE STA. 56+00



- NOTES:**
- THE LOCATIONS OF THE EXISTING UTILITIES SHOWN ARE TAKEN FROM THE BEST INFORMATION AVAILABLE. THEY ARE NOT GUARANTEED TO BE ACCURATE AND MUST BE VERIFIED BY THE CONTRACTOR BEFORE THE START OF CONSTRUCTION.
 - THE CONTRACTOR SHALL BE HELD RESPONSIBLE FOR ANY DAMAGE TO UTILITIES.

CONTRACTOR SHALL BE RESPONSIBLE FOR LOCATING ALL UTILITIES WHETHER PUBLIC OR PRIVATE, PRIOR TO CONSTRUCTION



95% PRELIMINARY SUBMITTAL

PRELIMINARY FOR REVIEW ONLY

THESE DOCUMENTS ARE PRELIMINARY AND SUBJECT TO CHANGE. THEY ARE NOT INTENDED FOR CONSTRUCTION OR PERMIT PURPOSES. THEY WERE PREPARED BY, OR UNDER THE SUPERVISION OF:

LEONARD D. YOUNG 61852 11/13/2020
 NAME P.E.# DATE

NO	DATE	DESCRIPTION	DWG	CHK
		REVISIONS		



YOUNG PROFESSIONAL RESOURCES
 8209 Roughrider Drive, Suite 101 Windcrest, TX 78239
 Tel. (210) 590-9215 Fax (210) 590-9346
 Young Professional Resources
 Registration No. F-8635



http://www.pozcam.com/
 5835 CALLAGHAN RD. SUITE 200
 SAN ANTONIO, TEXAS, 78228
 T&E REG. NO. F-483
 (210) 349-3273 (210) 349-4395 (FAX)

CITY OF SAN ANTONIO
 PUBLIC WORKS

FREDERICKSBURG RD - BASE BID
 N FLORES ST TO CINCINNATI AVE
 UTILITY BASE MAP LAYOUT
 STA. 48+00 - STA. 56+00

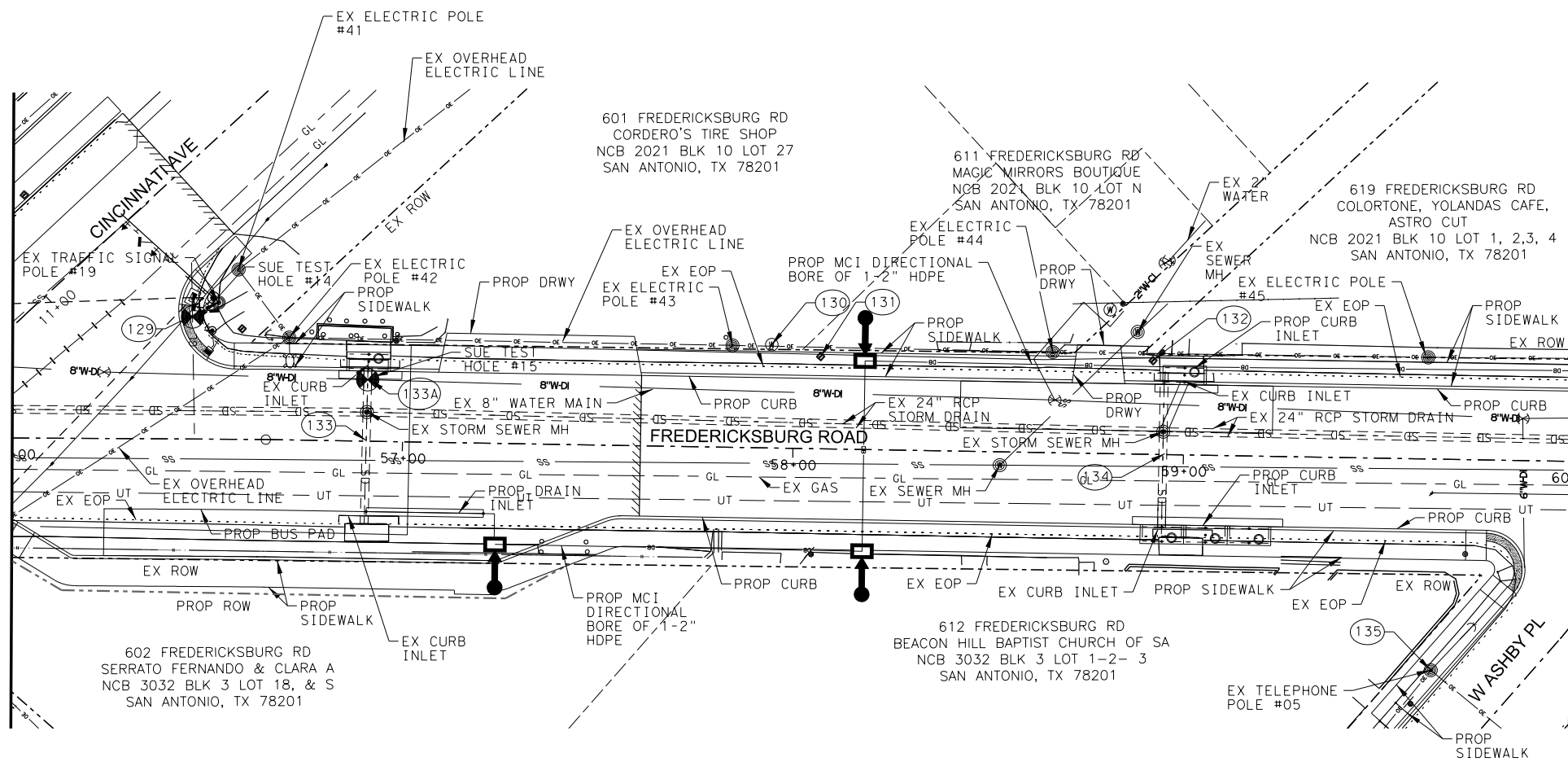
SHEET 05 OF 05

95% DESIGN	PROJECT NO. 23-01582	DATE 11/13/2020
DRWN. BY: AAM	DSGN. BY: AAM	CHKD. BY: JIN
		SHEET No. 237

Plotted on: \$DATE\$

Filename: \$FILE\$. \$

MATCHLINE STA. 56+00



MATCHLINE STA. 60+00

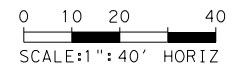
LEGEND

- AT&T U/G COMMUNICATION
- CENTURY LINK U/G COMMUNICATION
- GRANDE U/G COMMUNICATION
- CPS U/G ELECTRIC
- OE --- CPS O/H ELECTRIC
- GL --- CPS U/G GAS
- SS --- SAWS SANITARY SEWER
- W --- SAWS WATER
- SD --- STORM SEWER
- ⊙ COMMUNICATION MANHOLE
- ⊙ CPS ELECTRIC MANHOLE
- ⊙ EX TRAFFIC POLE/CPS POLE
- ⊙ SAWS FIRE HYDRANT
- ⊙ SAWS SANITARY SEWER MANHOLE
- ⊙ SD --- STORM SEWER MANHOLE
- ⊙ W --- EX WTR METER
- ⊙ SAWS WATER VALVE
- ⊙ TELEPHONE MANHOLE
- ⊙ UTILITY CONFLICT
- PROP FIBER OPTIC
- DB --- PROP MCI
- ⊙ SUE TEST HOLE
- ⊙ EX SIGN

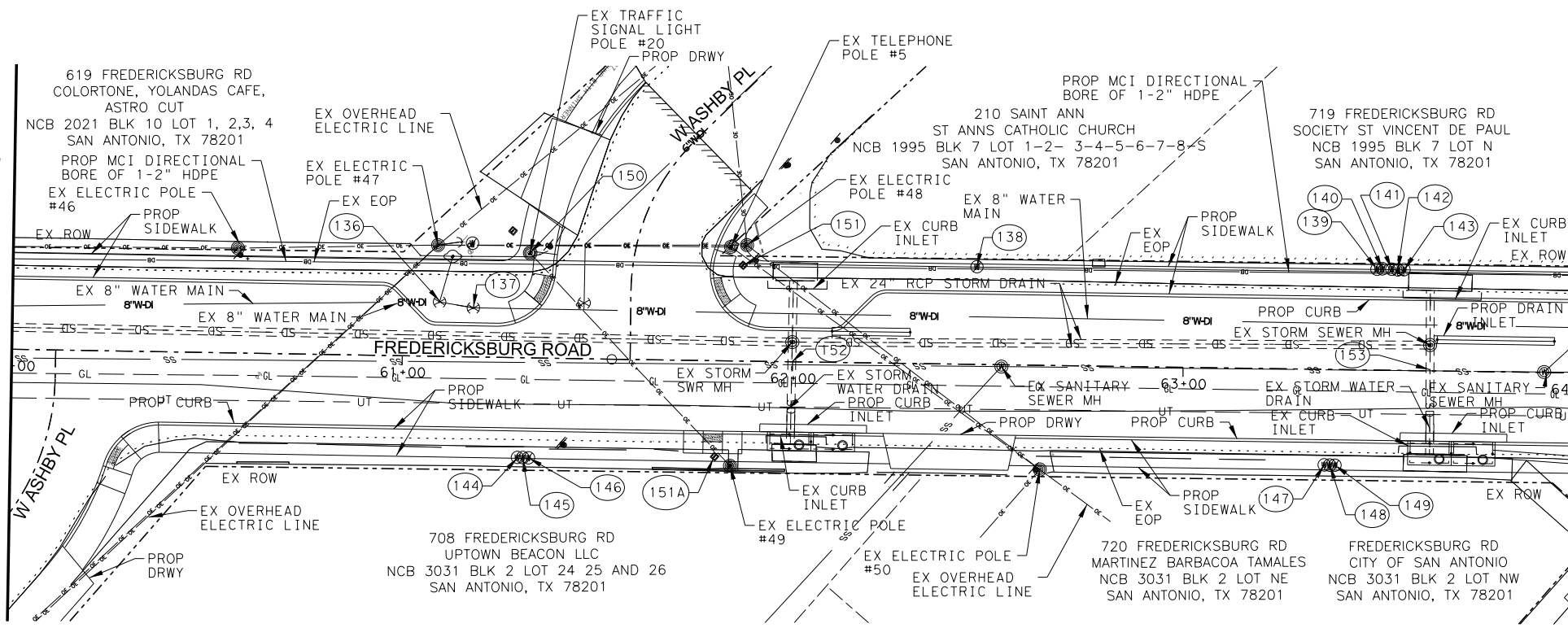
NOTES:

- THE LOCATIONS OF THE EXISTING UTILITIES SHOWN ARE TAKEN FROM THE BEST INFORMATION AVAILABLE. THEY ARE NOT GUARANTEED TO BE ACCURATE AND MUST BE VERIFIED BY THE CONTRACTOR BEFORE THE START OF CONSTRUCTION.
- THE CONTRACTOR SHALL BE HELD RESPONSIBLE FOR ANY DAMAGE TO UTILITIES.

CONTRACTOR SHALL BE RESPONSIBLE FOR LOCATING ALL UTILITIES WHETHER PUBLIC OR PRIVATE, PRIOR TO CONSTRUCTION



MATCHLINE STA. 60+00



MATCHLINE STA. 64+00

95% PRELIMINARY SUBMITTAL

PRELIMINARY FOR REVIEW ONLY

THESE DOCUMENTS ARE PRELIMINARY AND SUBJECT TO CHANGE. THEY ARE NOT INTENDED FOR CONSTRUCTION OR PERMIT PURPOSES. THEY WERE PREPARED BY, OR UNDER THE SUPERVISION OF:

LEONARD D. YOUNG	61852	11/13/2020
NAME	P.E. #	DATE

NO	DATE	DESCRIPTION	DWG	CHK
		REVISIONS		



YOUNG PROFESSIONAL RESOURCES
8209 Roughrider Drive, Suite 101 Windcrest, TX 78239
Tel. (210) 590-9215 Fax (210) 590-9346
Young Professional Resources
Registration No. F-8635



POZNECKI CAMARILLO INC.
http://www.pozcam.com/
5835 CALLAGHAN RD., SUITE 200
SAN ANTONIO, TEXAS, 78228
TBP REG. NO. F-483
(210) 349-3273 (210) 349-4395 (FAX)

CITY OF SAN ANTONIO PUBLIC WORKS

FREDERICKSBURG RD - ADDITIVE ALTERNATE BID
CINCINNATI AVE TO W CRAIG PL
UTILITY BASEMAP LAYOUT
STA. 56+00 - STA. 64+00

SHEET 01 OF 03

95% DESIGN	PROJECT NO. 23-01582	DATE 11/13/2020
DRWN. BY: AAM	DSGN. BY: AAM	CHKD. BY: JN
		SHEET No. 61

Plotted on: \$DATE\$

Filename: \$FILE\$.

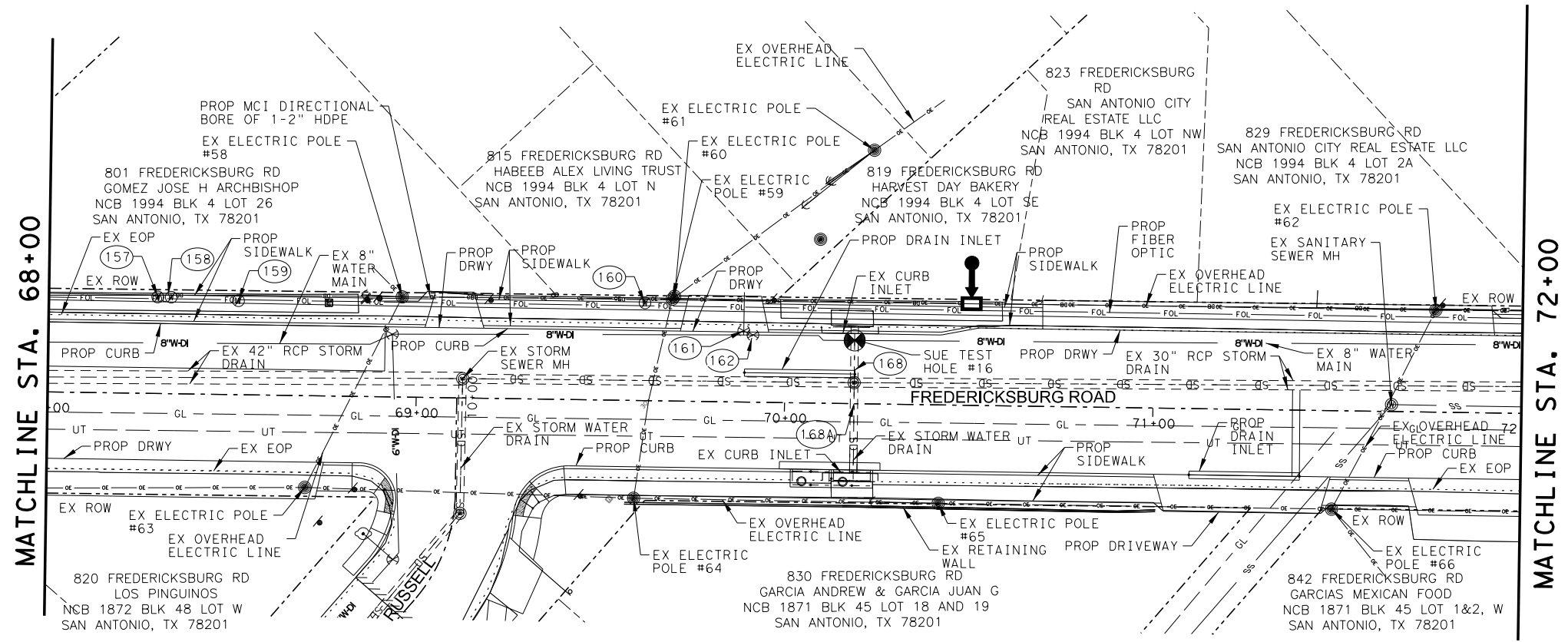
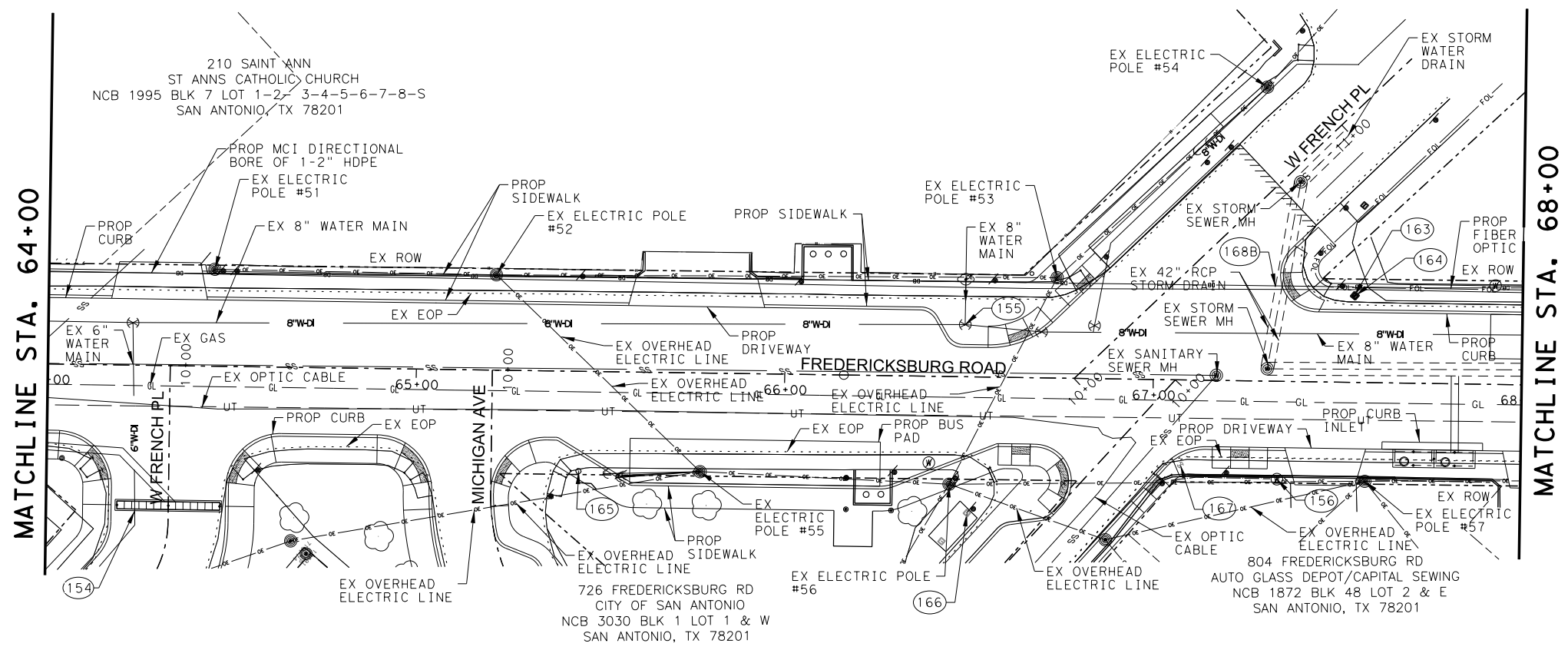
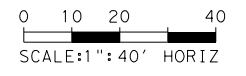
LEGEND

- AT&T U/G COMMUNICATION
- CENTURY LINK U/G COMMUNICATION
- GRANDE U/G COMMUNICATION
- CPS U/G ELECTRIC
- OE ----- CPS O/H ELECTRIC
- GL ----- CPS U/G GAS
- SS ----- SAWS SANITARY SEWER
- W ----- SAWS WATER
- SD ----- STORM SEWER
- ⊙ COMMUNICATION MANHOLE
- ⊙ CPS ELECTRIC MANHOLE
- ⊙ EX TRAFFIC POLE/CPS POLE
- ⊙ SAWS FIRE HYDRANT
- ⊙ SAWS SANITARY SEWER MANHOLE
- ⊙ STORM SEWER MANHOLE
- ⊙ EX WTR METER
- ⊙ SAWS WATER VALVE
- ⊙ TELEPHONE MANHOLE
- ⊙ UTILITY CONFLICT
- ⊙ PROP FIBER OPTIC
- ⊙ PROP MCI
- ⊙ SUE TEST HOLE
- ⊙ EX SIGN

NOTES:

- THE LOCATIONS OF THE EXISTING UTILITIES SHOWN ARE TAKEN FROM THE BEST INFORMATION AVAILABLE. THEY ARE NOT GUARANTEED TO BE ACCURATE AND MUST BE VERIFIED BY THE CONTRACTOR BEFORE THE START OF CONSTRUCTION.
- THE CONTRACTOR SHALL BE HELD RESPONSIBLE FOR ANY DAMAGE TO UTILITIES.

CONTRACTOR SHALL BE RESPONSIBLE FOR LOCATING ALL UTILITIES WHETHER PUBLIC OR PRIVATE, PRIOR TO CONSTRUCTION



95% PRELIMINARY SUBMITTAL

PRELIMINARY FOR REVIEW ONLY

THESE DOCUMENTS ARE PRELIMINARY AND SUBJECT TO CHANGE. THEY ARE NOT INTENDED FOR CONSTRUCTION OR PERMIT PURPOSES. THEY WERE PREPARED BY, OR UNDER THE SUPERVISION OF:

LEONARD D. YOUNG 61852 11/13/2020
NAME P.E.# DATE

NO	DATE	DESCRIPTION	DWG	CHK
REVISIONS				



YOUNG PROFESSIONAL RESOURCES
8209 Roughrider Drive, Suite 101 Windcrest, TX 78239
Tel. (210) 590-9215 Fax (210) 590-9346
Young Professional Resources
Registration No. F-8635

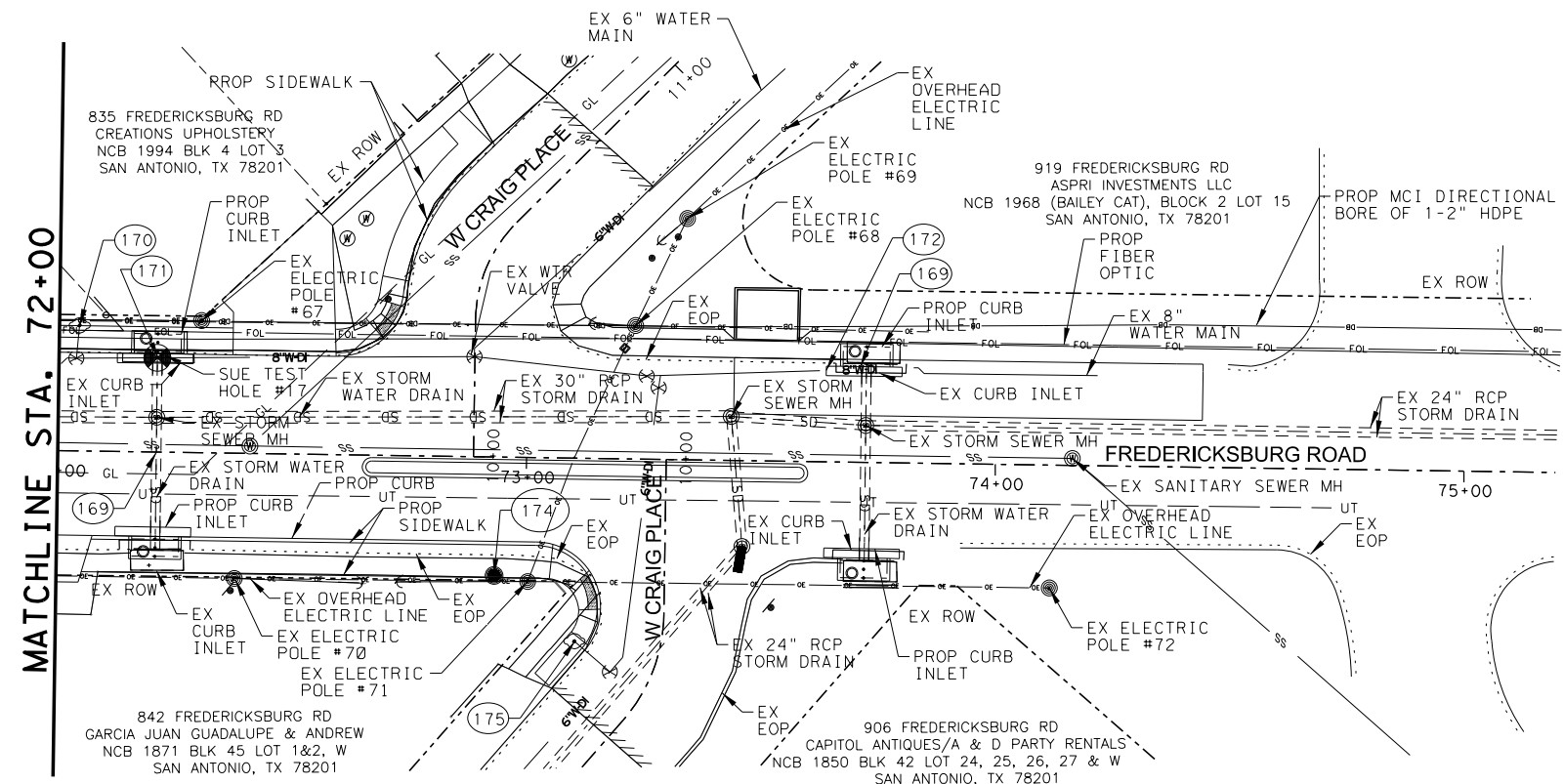


http://www.pozcam.com/
5835 CALLAGHAN RD., SUITE 200
SAN ANTONIO, TEXAS, 78228
TBP REG. NO. F-483
(210) 349-3273 (210) 349-4395 (FAX)

CITY OF SAN ANTONIO PUBLIC WORKS

FREDERICKSBURG RD - ADDITIVE ALTERNATE BID
CINCINNATI AVE TO W CRAIG PL
UTILITY BASEMAP LAYOUT
STA. 64+00 - STA. 72+00

95% DESIGN	PROJECT NO. 23-01582	DATE 11/13/2020	SHEET 02 OF 03
DRWN. BY: AAM	DSGN. BY: AAM	CHKD. BY: JN	SHEET No: 62



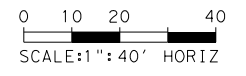
LEGEND

- AT&T U/G COMMUNICATION
- CENTURY LINK U/G COMMUNICATION
- GRANDE U/G COMMUNICATION
- CPS U/G ELECTRIC
- OE — CPS O/H ELECTRIC
- GL — CPS U/G GAS
- SS — SAWS SANITARY SEWER
- W — SAWS WATER
- SD — STORM SEWER
- ⊙ COMMUNICATION MANHOLE
- ⊙ CPS ELECTRIC MANHOLE
- ⊙ EX TRAFFIC POLE/CPS POLE
- ⊙ SAWS FIRE HYDRANT
- ⊙ SAWS SANITARY SEWER MANHOLE
- ⊙ SD STORM SEWER MANHOLE
- ⊙ EX WTR METER
- ⊙ SAWS WATER VALVE
- ⊙ TELEPHONE MANHOLE
- ⊙ UTILITY CONFLICT
- FOL — PROP FIBER OPTIC
- DB — PROP MCI
- ⊙ SUE TEST HOLE
- ⊙ EX SIGN

NOTES:

1. THE LOCATIONS OF THE EXISTING UTILITIES SHOWN ARE TAKEN FROM THE BEST INFORMATION AVAILABLE. THEY ARE NOT GUARANTEED TO BE ACCURATE AND MUST BE VERIFIED BY THE CONTRACTOR BEFORE THE START OF CONSTRUCTION.
2. THE CONTRACTOR SHALL BE HELD RESPONSIBLE FOR ANY DAMAGE TO UTILITIES.

CONTRACTOR SHALL BE RESPONSIBLE FOR LOCATING ALL UTILITIES WHETHER PUBLIC OR PRIVATE, PRIOR TO CONSTRUCTION



95% PRELIMINARY SUBMITTAL

PRELIMINARY FOR REVIEW ONLY

THESE DOCUMENTS ARE PRELIMINARY AND SUBJECT TO CHANGE. THEY ARE NOT INTENDED FOR CONSTRUCTION OR PERMIT PURPOSES. THEY WERE PREPARED BY, OR UNDER THE SUPERVISION OF:

LEONARD D. YOUNG	61852	11/13/2020
NAME	P.E. #	DATE

NO	DATE	DESCRIPTION REVISIONS	DWG	CHK

YPR YOUNG PROFESSIONAL RESOURCES
 8209 Roughrider Drive, Suite 101 Windcrest, TX 78239
 Tel. (210) 590-9215 Fax (210) 590-9346
 Young Professional Resources
 Registration No. F-8635

BOZNECKI INC. CAMARILLO <http://www.pozcan.com/>
 5835 CALLAGHAN RD., SUITE 200
 SAN ANTONIO, TEXAS, 78228
 T&E REG. NO. F-483
 (210) 349-3273 (210) 349-4395 (FAX)

CITY OF SAN ANTONIO
PUBLIC WORKS

FREDERICKSBURG RD - ADDITIVE ALTERNATE BID
 CINCINNATI AVE TO W CRAIG PL
 UTILITY BASEMAP LAYOUT
 STA. 72+00 - END

SHEET 03 OF 03

95% DESIGN	PROJECT NO. 23-01582	DATE 11/13/2020
DRWN. BY: AAM	DSGN. BY: AAM	CHKD. BY: JN
		SHEET No: 63