

ORDINANCE 2021 - 01 - 21 - 0024

DECLARING A 123.133-ACRE TRACT OF LAND IN COUNTY BLOCK 4006 LOCATED SOUTHEAST OF MITCHELL LAKE IN COUNCIL DISTRICT 3 AS SURPLUS AND AUTHORIZING ITS DISPOSITION BY THE SAN ANTONIO WATER SYSTEM (SAWS).

* * * * *

WHEREAS, the SAWS Board of Trustees passed Resolution No. 2020-135 on June 9, 2020 declaring a 123.133-acre tract of land in County Block 4006 near Mitchell Lake, as depicted in the attached here to Map **Exhibit “A”**, as surplus to its system; and

WHEREAS, under Municipal Code, all city-owned property must be declared as surplus prior to the property’s disposition (sale); and

WHEREAS, the request to declare property as surplus is submitted to the Public Works Real Estate Division; and

WHEREAS, the request and exhibits are then sent to departments and municipal-owned utilities that provide services to, or construct infrastructure on the properties; and

WHEREAS, City departments and municipal-owned utilities respond if there is a need for the property or if the property may be disposed of; and

WHEREAS, there was no opposition to this request by SAWS to dispose of a 123.133-acre unimproved portion of County Block 4006 located southeast of Mitchell Lake; and

WHEREAS, with City Council approval, SAWS is authorized to dispose of the property in accordance with the Chapters 253 and 272 of the Local Government Code; and

WHEREAS, the Planning Commission reviewed this request at its regular meeting on January 13, 2021; **NOW THEREFORE**:

BE IT ORDAINED BY THE CITY COUNCIL OF THE CITY OF SAN ANTONIO:

SECTION 1. The City Council hereby declares, a 123.133-acre tract of land, as depicted in the attached survey here to as **Exhibit “B”**, in County Block 4006 located southeast of Mitchell Lake in Council District 3 as surplus and authorizing its disposition by the San Antonio Water System (SAWS).

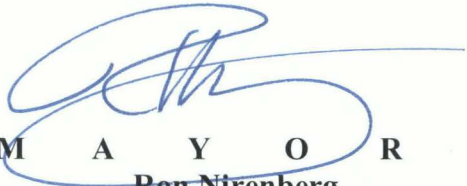
SECTION 2. All exhibits are incorporated into this Ordinance for all purposes as if they were fully set forth.

SECTION 3. No fiscal ordinance language required.


#500-15-10-1505

SECTION 4. This Ordinance becomes effective 10 days after passage, unless it receives the eight votes requisite to immediate effectiveness under San Antonio Municipal Code § 1-15, in which case it becomes effective immediately.

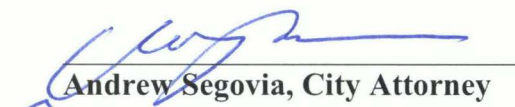
PASSED AND APPROVED this 21st day of January, 2021.


M A Y O R
Ron Nirenberg

Attest:


Tina J. Flores, City Clerk

Approved As To Form:


Andrew Segovia, City Attorney



City of San Antonio

City Council

January 21, 2021

Item: 10

Enactment Number:

File Number: 20-7278

2021-01-21-0024

Ordinance declaring a 123.133-acre tract of land in County Block 4006 located southeast of Mitchell Lake and along US Highway 281 South in Council District 3 as surplus and authorizing its disposition by the San Antonio Water System. [Roderick Sanchez, Assistant City Manager; Razi Hosseini, Director, Public Works]

Councilmember Roberto C. Treviño made a motion to approve. Councilmember Melissa Cabello Havrda seconded the motion. The motion passed by the following vote:

Aye: 11 Nirenberg, Treviño, Andrews-Sullivan, Viagran, Rocha Garcia, Gonzales, Cabello Havrda, Sandoval, Pelaez, Courage and Perry

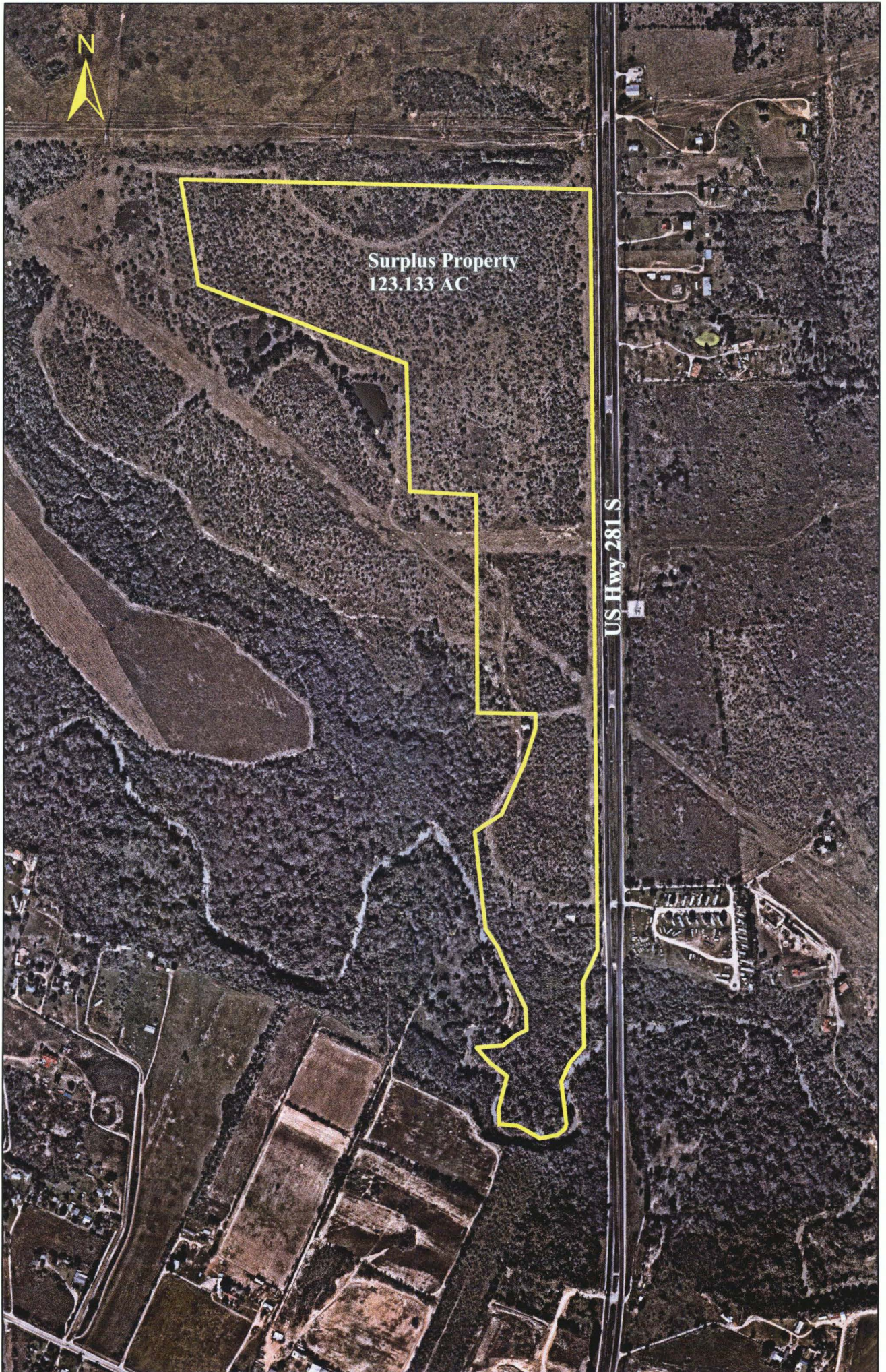
DBS
01/21/2021
Item No. 10

Exhibit A
Map



Surplus Property
123.133 AC

US Hwy 281 S



DBS
01/21/2021
Item No. 10

Exhibit B
SURVEY 123.133 ac EXHIBIT 052720

HIVERSAN SAN ANTONIO MANUFACTURING, LLC (POLLARD ADDRESS) DOC NO. 201103212131 0PR

JOSE ANTONIO DE LA GARZA TWO LEAGUE GRANT ABSTRACT NO. 3

123.133 ACRES TRACT out of the 285.41 Acres Tract conveyed to the CITY OF SAN ANTONIO RECORDED IN DOCUMENT NUMBER 2018010715 0PR

FIELD NOTES DESCRIPTION

A 121.111 acre tract of land, located in the San Antonio De La Garza Two League Grant, Abstract No. 3, County Block 408, Block 408, being a portion of a total 200.47 acres, certain lots of the above described tract are being surveyed and shown as follows:...

- 1. Run S 89° 52' 10" W of a distance of 388.75 feet (round Book 24 1/2' Book, 157.77 feet) to indicated right-of-way line.
- 2. Run S 89° 52' 10" W of a distance of 184.27 feet (round Book 24 1/2' Book, 184.27 feet) to indicated right-of-way line.
- 3. Run S 89° 52' 10" W of a distance of 184.27 feet (round Book 24 1/2' Book, 184.27 feet) to indicated right-of-way line.
- 4. Run S 89° 52' 10" W of a distance of 184.27 feet (round Book 24 1/2' Book, 184.27 feet) to indicated right-of-way line.
- 5. Run S 89° 52' 10" W of a distance of 184.27 feet (round Book 24 1/2' Book, 184.27 feet) to indicated right-of-way line.
- 6. Run S 89° 52' 10" W of a distance of 184.27 feet (round Book 24 1/2' Book, 184.27 feet) to indicated right-of-way line.
- 7. Run S 89° 52' 10" W of a distance of 184.27 feet (round Book 24 1/2' Book, 184.27 feet) to indicated right-of-way line.
- 8. Run S 89° 52' 10" W of a distance of 184.27 feet (round Book 24 1/2' Book, 184.27 feet) to indicated right-of-way line.
- 9. Run S 89° 52' 10" W of a distance of 184.27 feet (round Book 24 1/2' Book, 184.27 feet) to indicated right-of-way line.
- 10. Run S 89° 52' 10" W of a distance of 184.27 feet (round Book 24 1/2' Book, 184.27 feet) to indicated right-of-way line.
- 11. Run S 89° 52' 10" W of a distance of 184.27 feet (round Book 24 1/2' Book, 184.27 feet) to indicated right-of-way line.
- 12. Run S 89° 52' 10" W of a distance of 184.27 feet (round Book 24 1/2' Book, 184.27 feet) to indicated right-of-way line.
- 13. Run S 89° 52' 10" W of a distance of 184.27 feet (round Book 24 1/2' Book, 184.27 feet) to indicated right-of-way line.
- 14. Run S 89° 52' 10" W of a distance of 184.27 feet (round Book 24 1/2' Book, 184.27 feet) to indicated right-of-way line.
- 15. Run S 89° 52' 10" W of a distance of 184.27 feet (round Book 24 1/2' Book, 184.27 feet) to indicated right-of-way line.
- 16. Run S 89° 52' 10" W of a distance of 184.27 feet (round Book 24 1/2' Book, 184.27 feet) to indicated right-of-way line.
- 17. Run S 89° 52' 10" W of a distance of 184.27 feet (round Book 24 1/2' Book, 184.27 feet) to indicated right-of-way line.
- 18. Run S 89° 52' 10" W of a distance of 184.27 feet (round Book 24 1/2' Book, 184.27 feet) to indicated right-of-way line.
- 19. Run S 89° 52' 10" W of a distance of 184.27 feet (round Book 24 1/2' Book, 184.27 feet) to indicated right-of-way line.
- 20. Run S 89° 52' 10" W of a distance of 184.27 feet (round Book 24 1/2' Book, 184.27 feet) to indicated right-of-way line.
- 21. Run S 89° 52' 10" W of a distance of 184.27 feet (round Book 24 1/2' Book, 184.27 feet) to indicated right-of-way line.
- 22. Run S 89° 52' 10" W of a distance of 184.27 feet (round Book 24 1/2' Book, 184.27 feet) to indicated right-of-way line.
- 23. Run S 89° 52' 10" W of a distance of 184.27 feet (round Book 24 1/2' Book, 184.27 feet) to indicated right-of-way line.
- 24. Run S 89° 52' 10" W of a distance of 184.27 feet (round Book 24 1/2' Book, 184.27 feet) to indicated right-of-way line.
- 25. Run S 89° 52' 10" W of a distance of 184.27 feet (round Book 24 1/2' Book, 184.27 feet) to indicated right-of-way line.
- 26. Run S 89° 52' 10" W of a distance of 184.27 feet (round Book 24 1/2' Book, 184.27 feet) to indicated right-of-way line.
- 27. Run S 89° 52' 10" W of a distance of 184.27 feet (round Book 24 1/2' Book, 184.27 feet) to indicated right-of-way line.
- 28. Run S 89° 52' 10" W of a distance of 184.27 feet (round Book 24 1/2' Book, 184.27 feet) to indicated right-of-way line.
- 29. Run S 89° 52' 10" W of a distance of 184.27 feet (round Book 24 1/2' Book, 184.27 feet) to indicated right-of-way line.
- 30. Run S 89° 52' 10" W of a distance of 184.27 feet (round Book 24 1/2' Book, 184.27 feet) to indicated right-of-way line.
- 31. Run S 89° 52' 10" W of a distance of 184.27 feet (round Book 24 1/2' Book, 184.27 feet) to indicated right-of-way line.
- 32. Run S 89° 52' 10" W of a distance of 184.27 feet (round Book 24 1/2' Book, 184.27 feet) to indicated right-of-way line.
- 33. Run S 89° 52' 10" W of a distance of 184.27 feet (round Book 24 1/2' Book, 184.27 feet) to indicated right-of-way line.
- 34. Run S 89° 52' 10" W of a distance of 184.27 feet (round Book 24 1/2' Book, 184.27 feet) to indicated right-of-way line.
- 35. Run S 89° 52' 10" W of a distance of 184.27 feet (round Book 24 1/2' Book, 184.27 feet) to indicated right-of-way line.
- 36. Run S 89° 52' 10" W of a distance of 184.27 feet (round Book 24 1/2' Book, 184.27 feet) to indicated right-of-way line.
- 37. Run S 89° 52' 10" W of a distance of 184.27 feet (round Book 24 1/2' Book, 184.27 feet) to indicated right-of-way line.
- 38. Run S 89° 52' 10" W of a distance of 184.27 feet (round Book 24 1/2' Book, 184.27 feet) to indicated right-of-way line.
- 39. Run S 89° 52' 10" W of a distance of 184.27 feet (round Book 24 1/2' Book, 184.27 feet) to indicated right-of-way line.
- 40. Run S 89° 52' 10" W of a distance of 184.27 feet (round Book 24 1/2' Book, 184.27 feet) to indicated right-of-way line.
- 41. Run S 89° 52' 10" W of a distance of 184.27 feet (round Book 24 1/2' Book, 184.27 feet) to indicated right-of-way line.
- 42. Run S 89° 52' 10" W of a distance of 184.27 feet (round Book 24 1/2' Book, 184.27 feet) to indicated right-of-way line.
- 43. Run S 89° 52' 10" W of a distance of 184.27 feet (round Book 24 1/2' Book, 184.27 feet) to indicated right-of-way line.
- 44. Run S 89° 52' 10" W of a distance of 184.27 feet (round Book 24 1/2' Book, 184.27 feet) to indicated right-of-way line.
- 45. Run S 89° 52' 10" W of a distance of 184.27 feet (round Book 24 1/2' Book, 184.27 feet) to indicated right-of-way line.
- 46. Run S 89° 52' 10" W of a distance of 184.27 feet (round Book 24 1/2' Book, 184.27 feet) to indicated right-of-way line.
- 47. Run S 89° 52' 10" W of a distance of 184.27 feet (round Book 24 1/2' Book, 184.27 feet) to indicated right-of-way line.
- 48. Run S 89° 52' 10" W of a distance of 184.27 feet (round Book 24 1/2' Book, 184.27 feet) to indicated right-of-way line.
- 49. Run S 89° 52' 10" W of a distance of 184.27 feet (round Book 24 1/2' Book, 184.27 feet) to indicated right-of-way line.
- 50. Run S 89° 52' 10" W of a distance of 184.27 feet (round Book 24 1/2' Book, 184.27 feet) to indicated right-of-way line.

LINE NO.	BEARING	DISTANCE	TO POINT
1	S 89° 52' 10" W	388.75	POINT 1
2	S 89° 52' 10" W	184.27	POINT 2
3	S 89° 52' 10" W	184.27	POINT 3
4	S 89° 52' 10" W	184.27	POINT 4
5	S 89° 52' 10" W	184.27	POINT 5
6	S 89° 52' 10" W	184.27	POINT 6
7	S 89° 52' 10" W	184.27	POINT 7
8	S 89° 52' 10" W	184.27	POINT 8
9	S 89° 52' 10" W	184.27	POINT 9
10	S 89° 52' 10" W	184.27	POINT 10
11	S 89° 52' 10" W	184.27	POINT 11
12	S 89° 52' 10" W	184.27	POINT 12
13	S 89° 52' 10" W	184.27	POINT 13
14	S 89° 52' 10" W	184.27	POINT 14
15	S 89° 52' 10" W	184.27	POINT 15
16	S 89° 52' 10" W	184.27	POINT 16
17	S 89° 52' 10" W	184.27	POINT 17
18	S 89° 52' 10" W	184.27	POINT 18
19	S 89° 52' 10" W	184.27	POINT 19
20	S 89° 52' 10" W	184.27	POINT 20
21	S 89° 52' 10" W	184.27	POINT 21
22	S 89° 52' 10" W	184.27	POINT 22
23	S 89° 52' 10" W	184.27	POINT 23
24	S 89° 52' 10" W	184.27	POINT 24
25	S 89° 52' 10" W	184.27	POINT 25
26	S 89° 52' 10" W	184.27	POINT 26
27	S 89° 52' 10" W	184.27	POINT 27
28	S 89° 52' 10" W	184.27	POINT 28
29	S 89° 52' 10" W	184.27	POINT 29
30	S 89° 52' 10" W	184.27	POINT 30
31	S 89° 52' 10" W	184.27	POINT 31
32	S 89° 52' 10" W	184.27	POINT 32
33	S 89° 52' 10" W	184.27	POINT 33
34	S 89° 52' 10" W	184.27	POINT 34
35	S 89° 52' 10" W	184.27	POINT 35
36	S 89° 52' 10" W	184.27	POINT 36
37	S 89° 52' 10" W	184.27	POINT 37
38	S 89° 52' 10" W	184.27	POINT 38
39	S 89° 52' 10" W	184.27	POINT 39
40	S 89° 52' 10" W	184.27	POINT 40
41	S 89° 52' 10" W	184.27	POINT 41
42	S 89° 52' 10" W	184.27	POINT 42
43	S 89° 52' 10" W	184.27	POINT 43
44	S 89° 52' 10" W	184.27	POINT 44
45	S 89° 52' 10" W	184.27	POINT 45
46	S 89° 52' 10" W	184.27	POINT 46
47	S 89° 52' 10" W	184.27	POINT 47
48	S 89° 52' 10" W	184.27	POINT 48
49	S 89° 52' 10" W	184.27	POINT 49
50	S 89° 52' 10" W	184.27	POINT 50

- NOTES
- ALL 1/8" ARE 1/8" BEARING
- MINOR ADJUSTMENTS TO BE MADE TO THE CORNER POINTS AS NECESSARY TO BRING THEM TO THE CORNER POINTS
- ALL BEARINGS ARE TRUE BEARINGS
- ALL DISTANCES ARE IN FEET AND INCHES
- THIS SURVEY IS PRODUCED WITHOUT THE AID OF A FIELD COMPARISON

TO: SAN ANTONIO WATER DISTRICT THE CITY OF SAN ANTONIO

THIS SURVEY SUBMITTANTLY COMPLETES WITH THE CURRENT TEXAS SOCIETY OF PROFESSIONAL SURVEYORS STANDARDS AND SPECIFICATIONS FOR A CATEGORY 1A, CATEGORY A SURVEY.

Robert E. Johnston, P.E.
ROBERT E. JOHNSTON, P.E.
REGISTERED PROFESSIONAL SURVEYOR
LICENSE NO. 5079
SINCE 07-27-2009
LICENSE NO. 18004110

FOR ENGINEERING

NOTING YOU COMMITTEES ARE BASED ON THE CURRENT TEXAS SOCIETY OF PROFESSIONAL SURVEYORS STANDARDS AND SPECIFICATIONS FOR A CATEGORY 1A, CATEGORY A SURVEY.

A NOTES AND BEARING DESCRIPTION OF EACH DATE IDENTIFY ACCORDS THIS SURVEY PLAN.

A PORTION OF THE SUBJECT PROPERTY LIES WITHIN THE 100' HIGH ELEVATION BLANK AS PER FIRM MAP NO. 44030308000 QUANTITY PAGE NO. 008088 DATED: SEPTEMBER 24, 2010



TSPS
Texas Society of Professional Surveyors

MEMBER

FORD ENGINEERING, INC.

ENGINEERING SURVEYING PLANNING
10927 WYE DRIVE, STE 104, SAN ANTONIO, TEXAS 78217 • P (210) 590-4777 • F (210) 590-4940
TPE No. 11623 • WWW.FORDEENGINEERING.COM • TPE's No. 19301840

PLAN SHOWING

123.133 ACRES TRACT out of the JOSE ANTONIO DE LA GARZA TWO LEAGUE GRANT ABSTRACT NO. 3, COUNTY BLOCK 408 BEING A PORTION OF A TRACT CALLED 285.41 ACRES CONVEYED TO THE CITY OF SAN ANTONIO RECORDED IN DOCUMENT NUMBER 2018010715 OF THE OFFICIAL PUBLIC RECORDS OF BEAUM COUNTY, TEXAS.