







- | | | |
|--|--|---|
|  Civic Center |  Mixed Use Center |  Rural Estate Tier |
|  General Urban Tier |  Regional Center |  Suburban Tier |

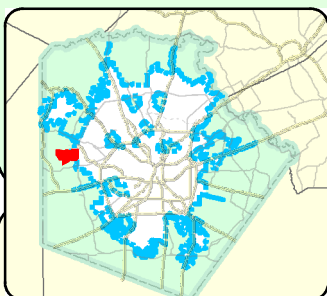
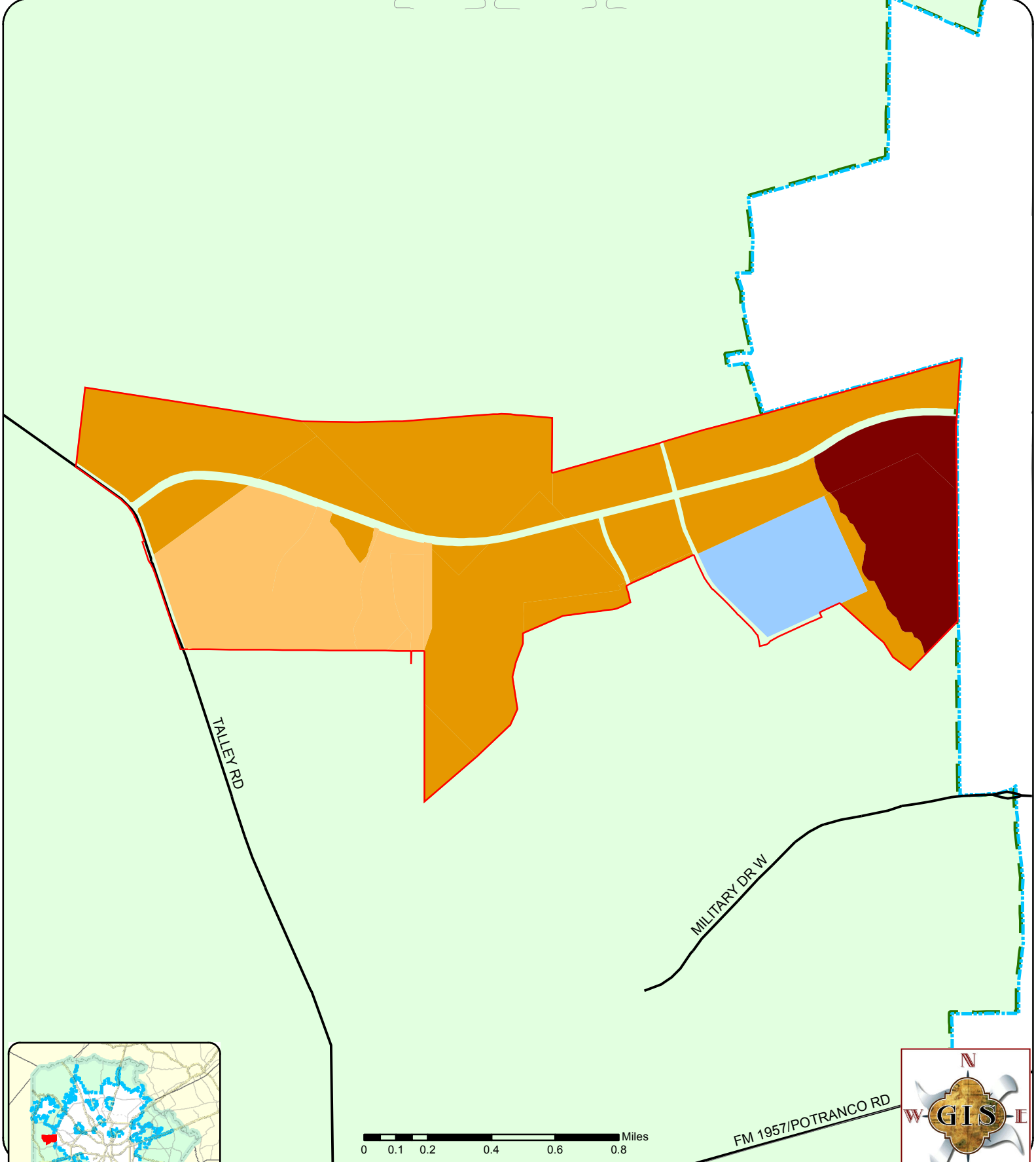
Data Source: City of San Antonio Enterprise GIS, Bexar Metro 911, Bexar Appraisal District
 *This Geographic Information System Product, received from the City of San Antonio is provided "as is" without warranty of any kind, and the City of San Antonio expressly disclaims all express and implied warranties, including but not limited to the implied warranties of merchantability and fitness for a particular purpose. The City of San Antonio does not warrant, guarantee, or make any representation regarding the data, or the results of its use, or the information provided to you by the City of San Antonio in terms of timeliness, accuracy, reliability, completeness, or otherwise. The entire risk as to the results and performance of any information obtained from the City of San Antonio is solely assumed by the recipient.
 *Please contact the responsible City of San Antonio Department for specific determinations.
 Maps may be ordered at: (210) 207-7933

Map Path: Y:\common\misc\29\GIS\Pin50\plan_1\1\Projects\2017\DSO\Proposed Annexation Land Use\Wiseman_Proposed_LU_08042017.mxd
 Date/Time Saved: 08/04/17 at 4:35:54 PM
 DWF Filename: Wiseman_Proposed_LU_08042017.pdf

2017 City of San Antonio Wiseman Adopted Land Use

City of San Antonio
 Information Technology Services Department
 GIS Public Service Unit
 Riverview Towers
 111 Soledad St, 9th Floor, Suite 900
 San Antonio, TX 78205





- | | | | |
|-------------------|--------------------|-------------------|-------------------------|
| Agribusiness Tier | General Urban Tier | Regional Center | Suburban Tier |
| Civic Center | Natural Tier | Rural Estate Tier | Agricultural Agreements |

For Illustrative Purposes Only

Data Source: City of San Antonio Enterprise GIS, Bexar Metro 911, Bexar Appraisal District
 *This Geographic Information System Product, received from the City of San Antonio is provided "as is" without warranty of any kind, and the City of San Antonio expressly disclaims all express and implied warranties, including but not limited to the implied warranties of merchantability and fitness for a particular purpose. The City of San Antonio does not warrant, guarantee, or make any representation regarding the data, or the results of the use of the information provided to you by the City of San Antonio in terms of completeness, accuracy, reliability, timeliness or otherwise. The entire risk as to the results and performance of any information obtained from the City of San Antonio is solely assumed by the recipient.
 **Please contact the responsible City of San Antonio Department for specific determinations.
 Maps may be ordered at: (210) 207-7933

Map Path: Y:\common\misc\29\GIS\Pin60\plan_illustrative\Projects\2017\DS\Proposed Annexation Land Use\Wiseman_Proposed_LU_08042017.mxd
 Date/Time Saved: 08/18/17 at 9:11:08 AM
 DWF Filename: Wiseman_Proposed_LU_08042017.pdf

2017 City of San Antonio Wiseman Proposed Land Use

City of San Antonio
 Information Technology Services Department
 GIS Public Service Unit

Riverview Towers
 111 Soledad St, 9th Floor, Suite 900
 San Antonio, TX 78205