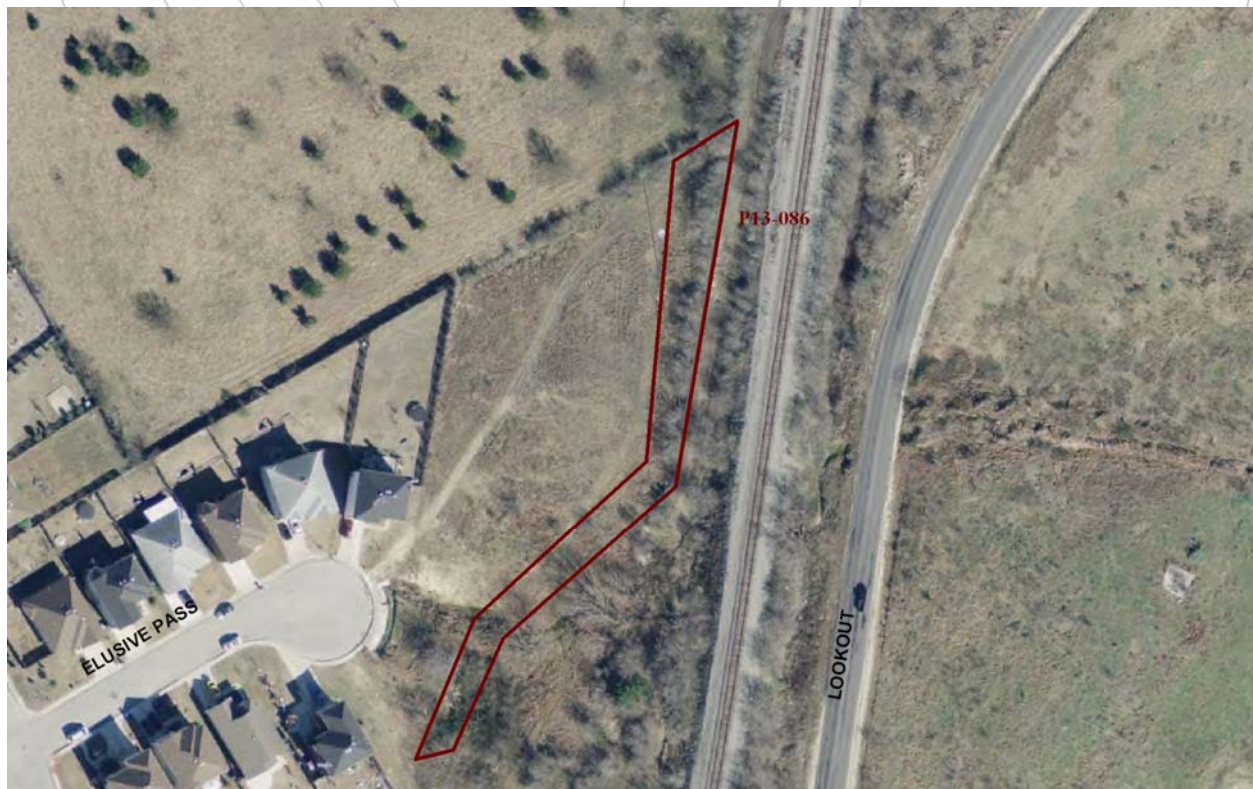
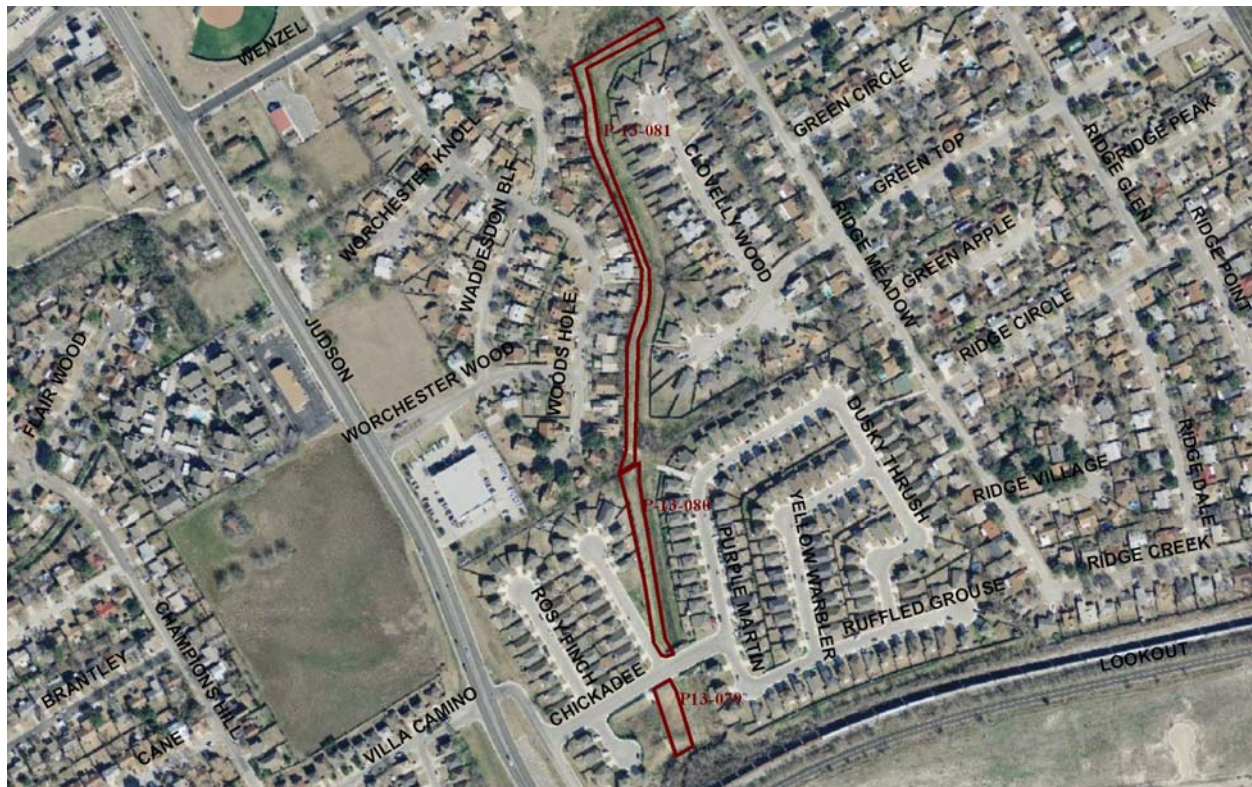
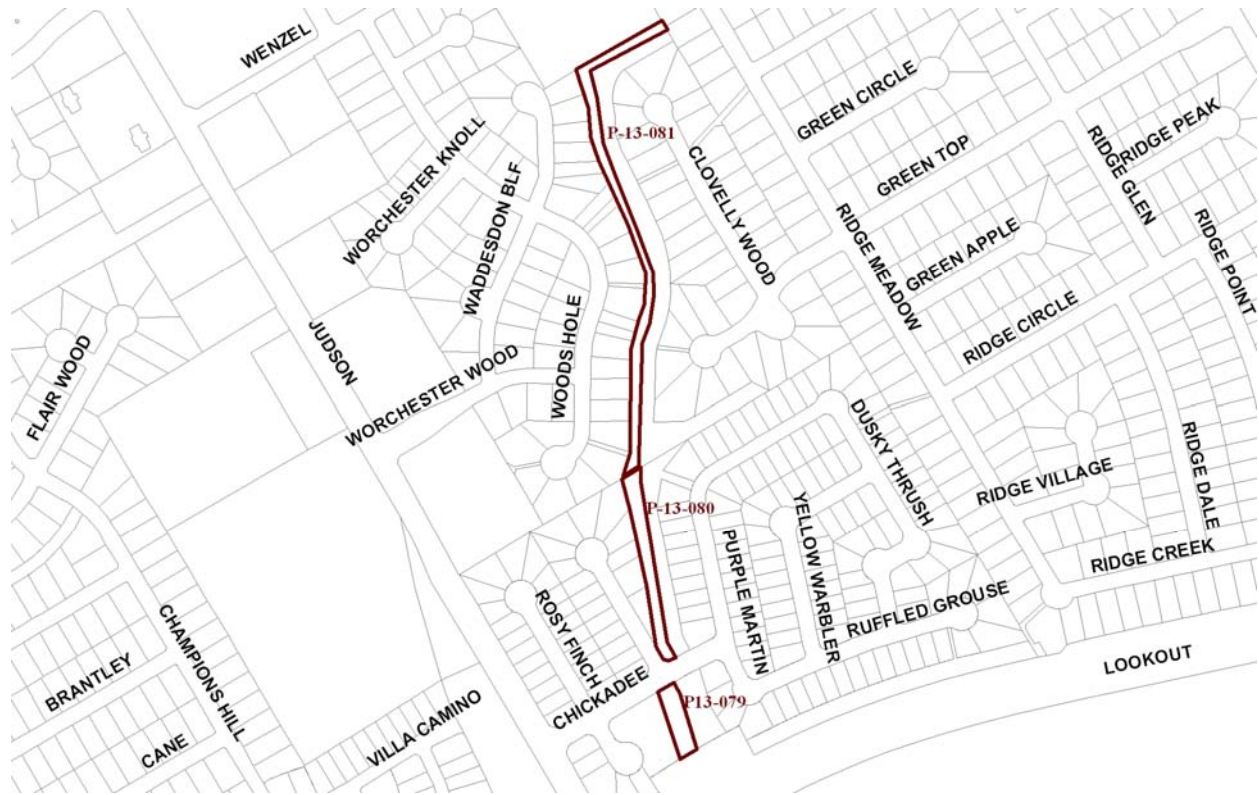


**S.P. 1785 SAWS requests four Joint Use Agreements to place infrastructure as part of its Cibolo Creek Sewer Shed project.
Map is an approximation. Refer to Plat and Field Notes for exact location.**



**S.P. 1785 SAWS requests four Joint Use Agreements to place infrastructure as part of its Cibolo Creek Sewer Shed project.
Map is an approximation. Refer to Plat and Field Notes for exact location.**



**S.P. 1785 SAWS requests four Joint Use Agreements to place infrastructure as part of its Cibolo Creek Sewer Shed project.
Map is an approximation. Refer to Plat and Field Notes for exact location.**