

**Friedrich Building Survey**  
**Office of Historic Preservation**  
**October 2013**

**General History**

- Friedrich Refrigeration Company: manufacturers of commercial refrigeration and room air conditioning equipment
- Complex constructed between 1923 and 1955
- Friedrich Refrigeration vacated site in 1990
- National Register Periods of Significance: Founding Period (1920s), Depression Period (1930s), War/Post-War Period (1940-1952)
- Local Historic Landmark, HS: Historic Significant
- Phases of Development: Phase A (1924-1932), Phase B (1933-1935), Phase C (1936-1939), Phase D (1940-1952), Phase E (post 1952)
- National Register Listed Criterion A (local level) in area of Industry for its association with pioneering methods of cold storage and refrigeration for 67 years



Front Elevation (Commerce Street)



West Elevation (Olive Street)



East Elevation (Pine Street)



Rear Elevation (Gibbs Street)

**Building 1: Office/Showroom - CONTRIBUTING**

- Designed by Harvey P. Smith
- Constructed ca. 1926 (1925 per NR)
- 3-story with 1-story wing
- Reinforced concrete and faced with ran brick
- Originally had one-story wing that ran 40' to east (additional 2-floors added above this ca. 1950 - now listed as Building 13).



**Building 2: Planing Mill/Shipping Department/Paint Room – NON-CONTRIBUTING**

- constructed ca.1923-25
- original portion fronted Paso Hondo with interior addition connecting to Office/Showroom on E. Commerce
- 3-story building with reinforced concrete walls to 3<sup>rd</sup> floor (at north end); combination of reinforced concrete and frame (at south end) – appears that south end of 3<sup>rd</sup> floor was enclosed at later time
- supported with timber columns and truss work; wooden floors; clerestory windows in east/west gable







**Building 3: Glazing/Finishing/Shipping Department - CONTRIBUTING**

- Constructed ca. 1924-25 (1926?)
- Exterior only visible from Olive street
- Wood floors and concrete and wood columns supporting east/west gable roof and truss work









**Building 4: Lumber Shed – NON-CONTRIBUTING**

- Constructed ca. 1934
- One-story with skylights, wood columns and truss work; shares concrete west wall with Planing/Milling/Shipping Dept.
- Old loading dock at SE corner with access through metal doors to Pine Street









**Building 5: Metal Working/Enameling Shop – CONTRIBUTING**

- Constructed ca. 1932 & 1934 (constructed in 2 phases)
- Constructed of reinforced concrete and has both concrete and wood floors
- West portion (1932) – wood floors and iron columns / East portion (1934) – concrete floors and columns
- Windows are 6/6 wood double-hung







**Building 6: Factory Building - CONTRIBUTING**

- Constructed ca. 1936
- Has one-story storefront at SW corner of complex on E Commerce with red clay tile coping
- Later one-story addition on S. elevation
- Reinforced concrete with tan brick to match Office/Showroom
- Rises to 3-stories in section along Olive
- Double hung wood windows on 2<sup>nd</sup> and 3<sup>rd</sup> floors
- Originally had a filling station on the first floor



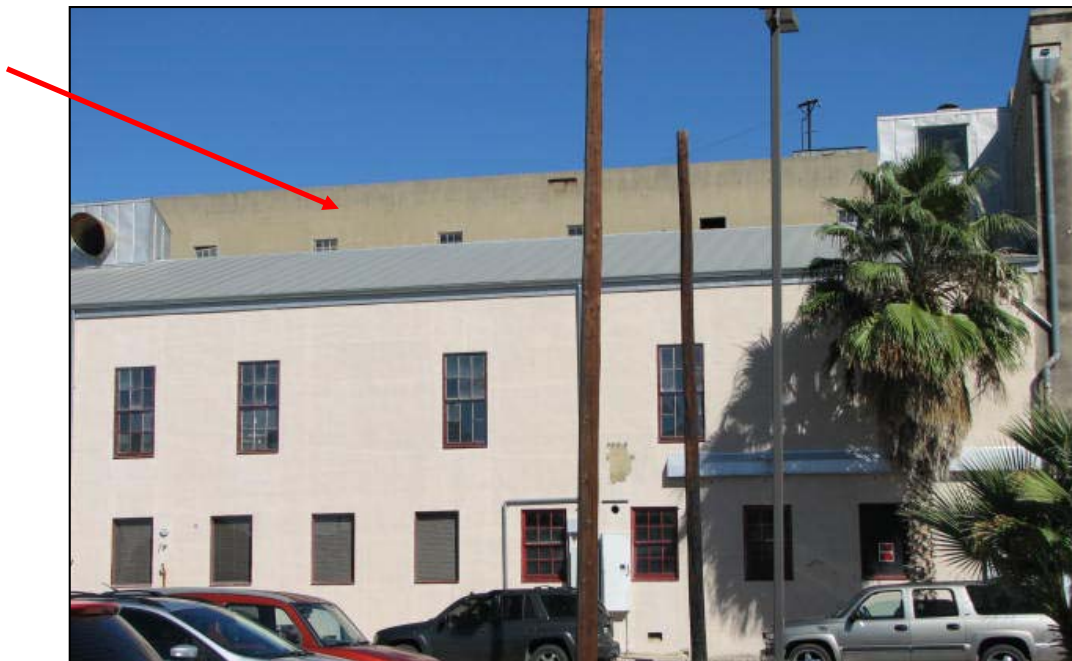
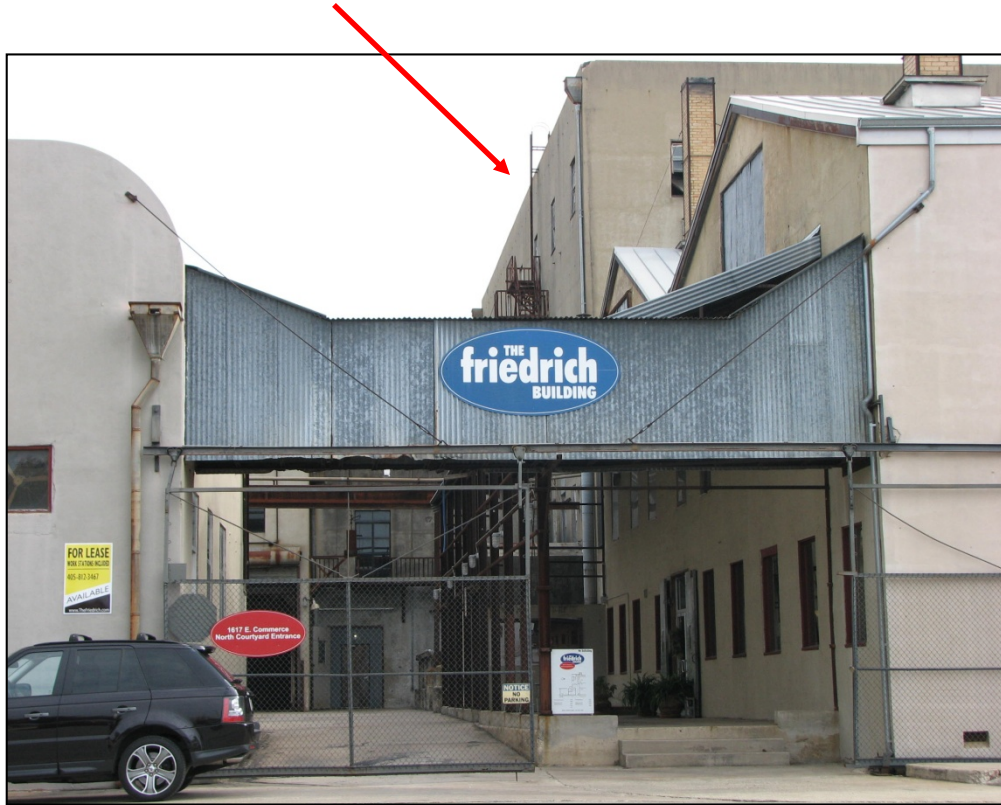






### Building 7: Metal Working/Shipping Department/Assembly Plant

- Constructed ca. 1938
- Concrete floors and columns on first floor; concrete floors and wood columns on second floor
- Portion of second floor contains pressed tin ceiling
- Windows on north elevation are 6/6 wood double-hung sash







**Building 8: Factory Building - CONTRIBUTING**

- Constructed ca. 1940
- Adjoins Office Building on the west
- South elevation has two bays with multi-pane metal frame windows
- Concrete pilasters with art deco motifs on façade
- Wood floors and concrete, wood, and iron columns; wooden roof truss system visible on third floor









**Building 9: Electro Plating Plant - CONTRIBUTING**

- Constructed ca. 1940
- 1-story reinforced concrete building at northwest corner of complex
- Large clerestory windows supported by metal truss work and steel “I” beam columns
- Connected to ca. 1960s addition at north end
- Multi-pane industrial style awning windows





**Building 10: Metal Stamping Plant - CONTRIBUTING**

- Constructed ca. 1940
- 1-story reinforced concrete building with wood and concrete floors
- Shed roof with metal frame, awning style clerestory windows running east/west
- East wall has openings into adjoining building









**Building 11: Metal Storage Building/Baked Enamel Plant - CONTRIBUTING**

- Constructed ca. 1951
- 1-story reinforced concrete building with a concrete and wood floor
- Metal truss structure supports roof
- Concrete mezzanine supported by concrete piers (bears date “1951”)
- Connected by square and circular openings to the adjoining Metal Stamping Building









**Building 12: Metal Working/Lumber Warehouse - CONTRIBUTING**

- Constructed ca. 1940
- 6-story reinforced concrete structure at southeast corner of building
- Combination of wood casement windows (1<sup>st</sup> floor) and 6/6 wood double-hung sash windows (2<sup>nd</sup> – 6<sup>th</sup> floors)
- Service station once abutted south elevation
- Concrete columns extend through 3<sup>rd</sup> floor
- Floors 3-6 have wood floors supported by wood columns/trusses
- Floor 3 – only 8-foot ceiling height
- Appears that double-height space on building's east side was divided into two levels
- Ceiling heights are 12' on 4<sup>th</sup> floor, 9' on 5<sup>th</sup> and 6<sup>th</sup> floors







**Building 13: Shop Building – NON-CONTRIBUTING**

- Constructed ca. 1950
- 3-story concrete building added to east side of Office Building
- Single pilaster with cap divides façade into two bays
- Added by constructing two floors over the original 1-story east wing of Office Building
- If demolished – recommend salvaging of wooden doors/windows







**Building 14: Electro Plating Addition/Tool and Die Shop - CONTRIBUTING**

- Constructed ca. 1955
- A one-story addition to the Electro Plating Plant that was used as a tool/dye shop
- Constructed of clay tile with concrete floor
- Multi-pane metal frame windows



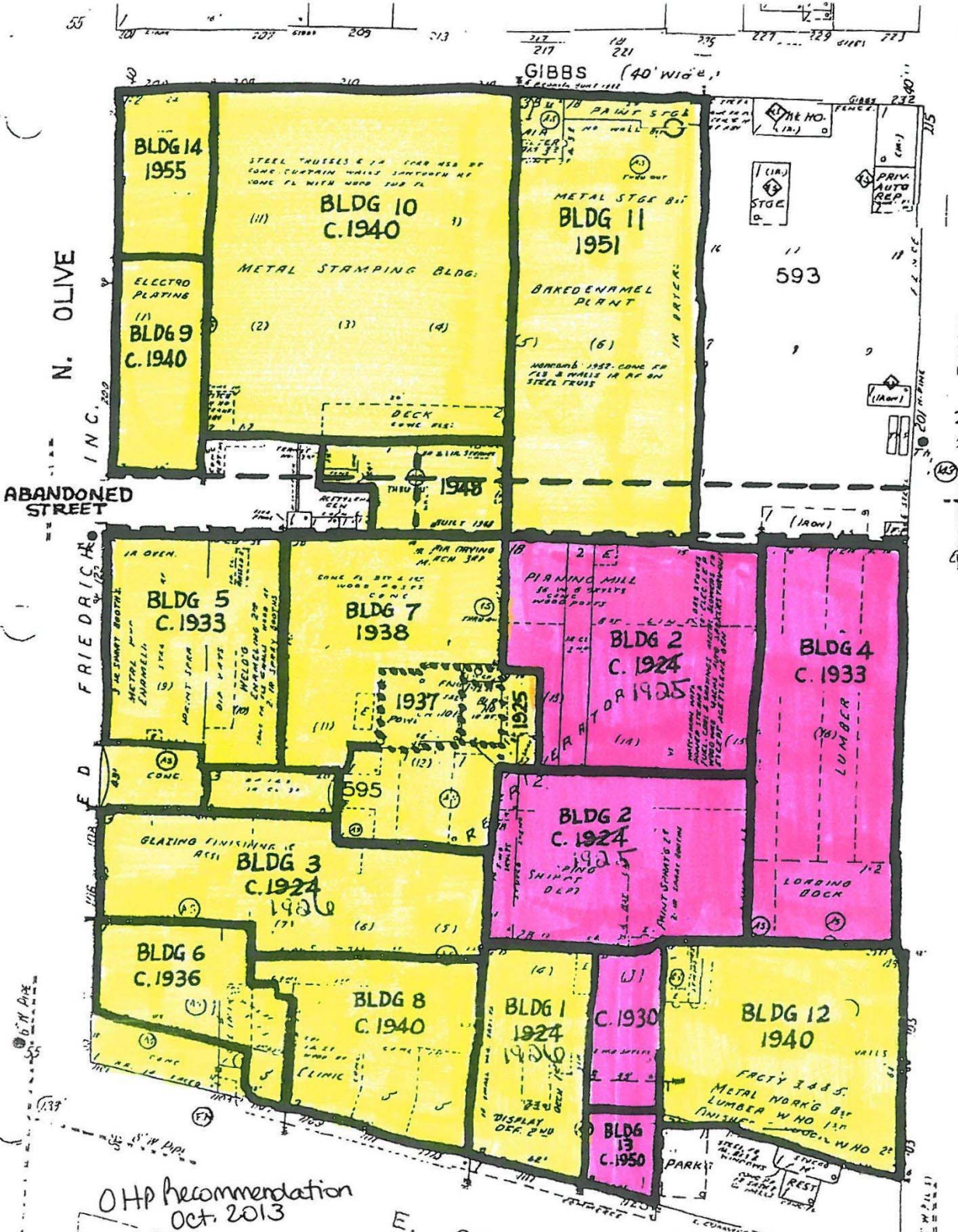


**Infill Construction (1948) – between buildings 7, 10, and 11 – CONTRIBUTING**





NATIONAL PARK SERVICE REVIEW MAP (DIFFERS FROM NHP MAP)



OHP Recommendation  
Oct. 2013

- Contributing
- Non-contributing

E. COMMERCE