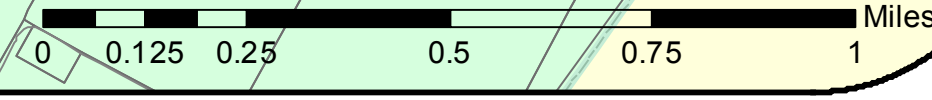
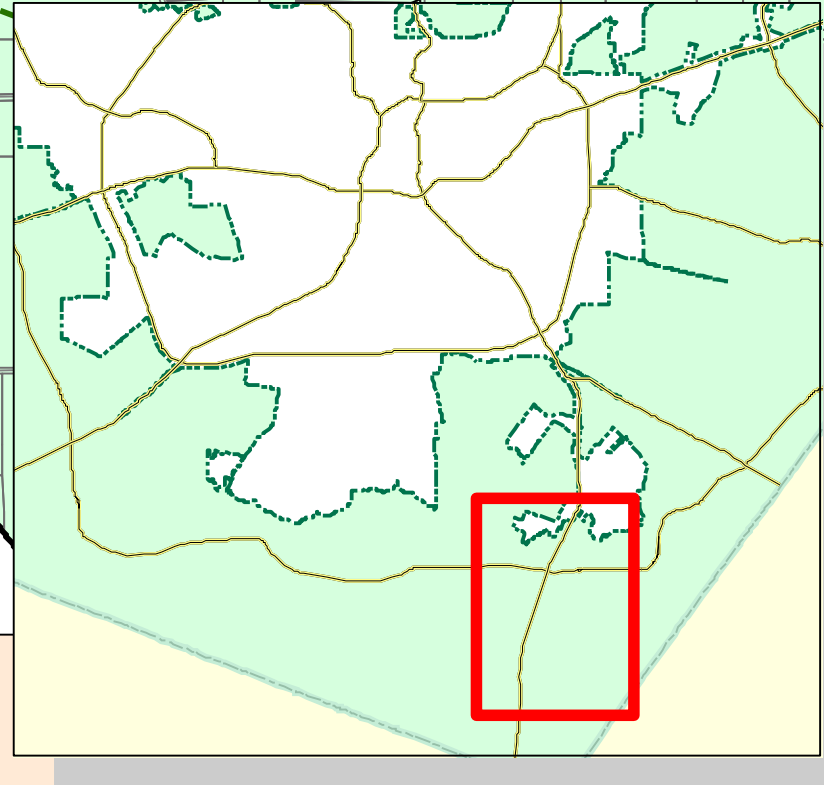


Proposed Sandy Oaks
 2559.88 Acres
 3.99 Square Miles



- Proposed Sandy Oaks Boundary
- Expressways
- 2013 BCAD Parcels
- Extraterritorial Jurisdiction Line

Data Source: City of San Antonio Enterprise GIS, Bexar Metro 911, Bexar Appraisal District

This Geographic Information System Product, received from The City of San Antonio is provided "as is" without warranty of any kind, and the City of San Antonio expressly disclaims all responsibility and liability for any errors or omissions in the digital content of this product. The City of San Antonio is not responsible for any errors or omissions in the digital content of this product. The City of San Antonio is not responsible for any errors or omissions in the digital content of this product. The City of San Antonio is not responsible for any errors or omissions in the digital content of this product. The City of San Antonio is not responsible for any errors or omissions in the digital content of this product.

Map file location: \\plan_jib\anxaction\et\sandyoaks_2013
 Map Last Edited: August 1, 2013
 PDF Filename: 1308GD01.pdf

City of San Antonio

Proposed Sandy Oaks Municipal Incorporation

