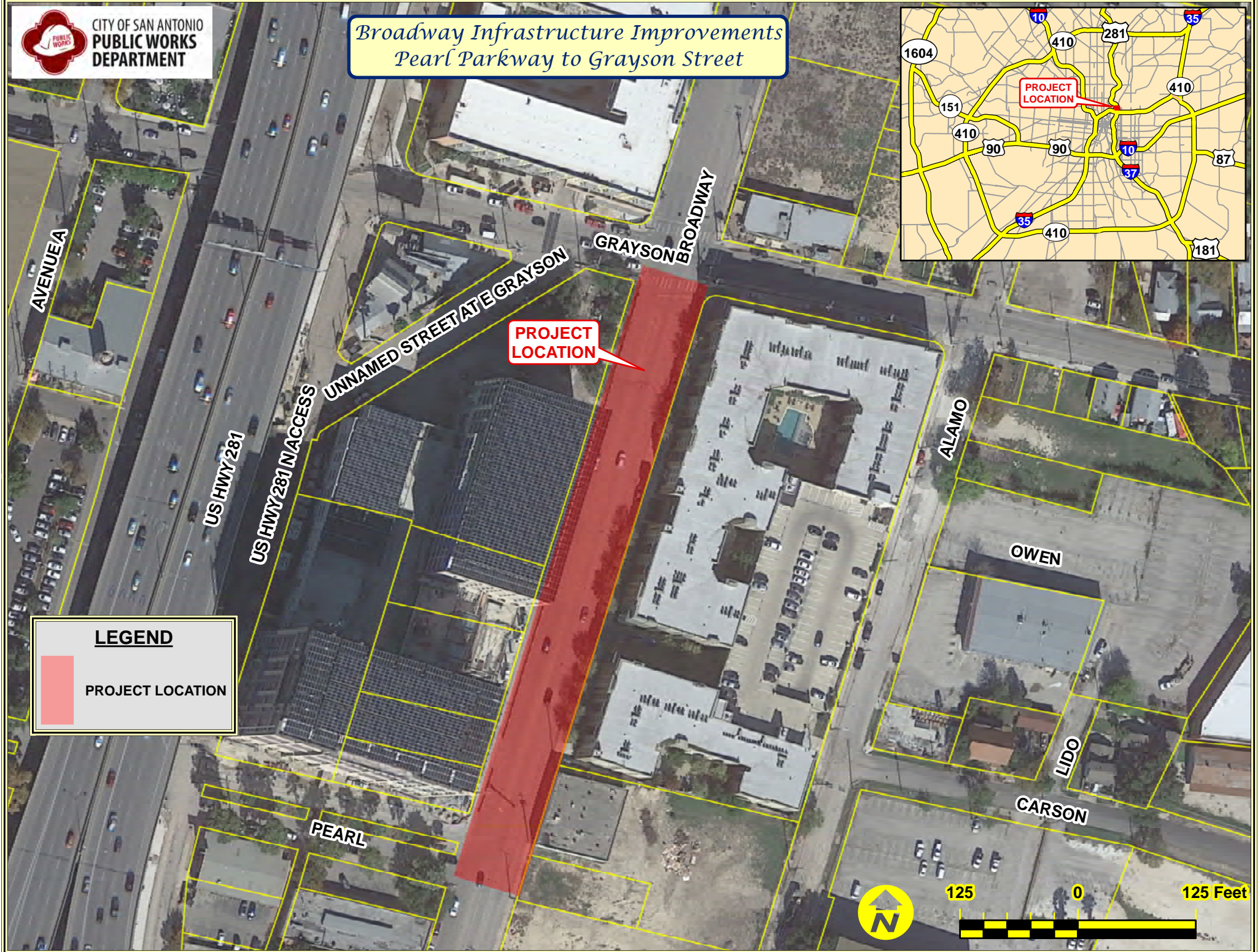
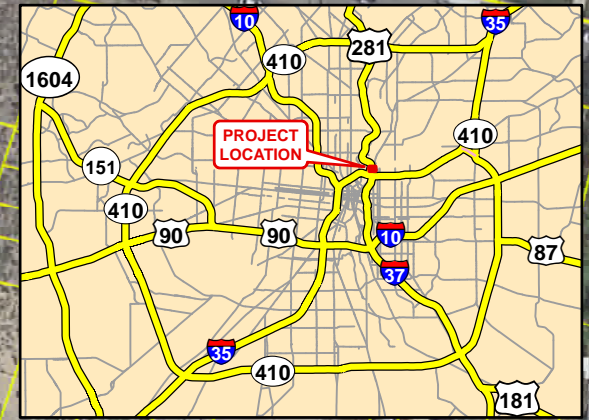




CITY OF SAN ANTONIO  
**PUBLIC WORKS  
 DEPARTMENT**

*Broadway Infrastructure Improvements  
 Pearl Parkway to Grayson Street*



**PROJECT LOCATION**

**LEGEND**

 PROJECT LOCATION

AVENUE A

US HWY 281

US HWY 281 N ACCESS

UNNAMED STREET

GRAYSON BROADWAY

ALAMO

OWEN

LIDO

CARSON

PEARL

