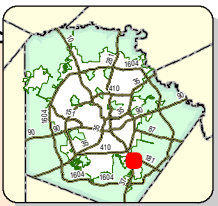
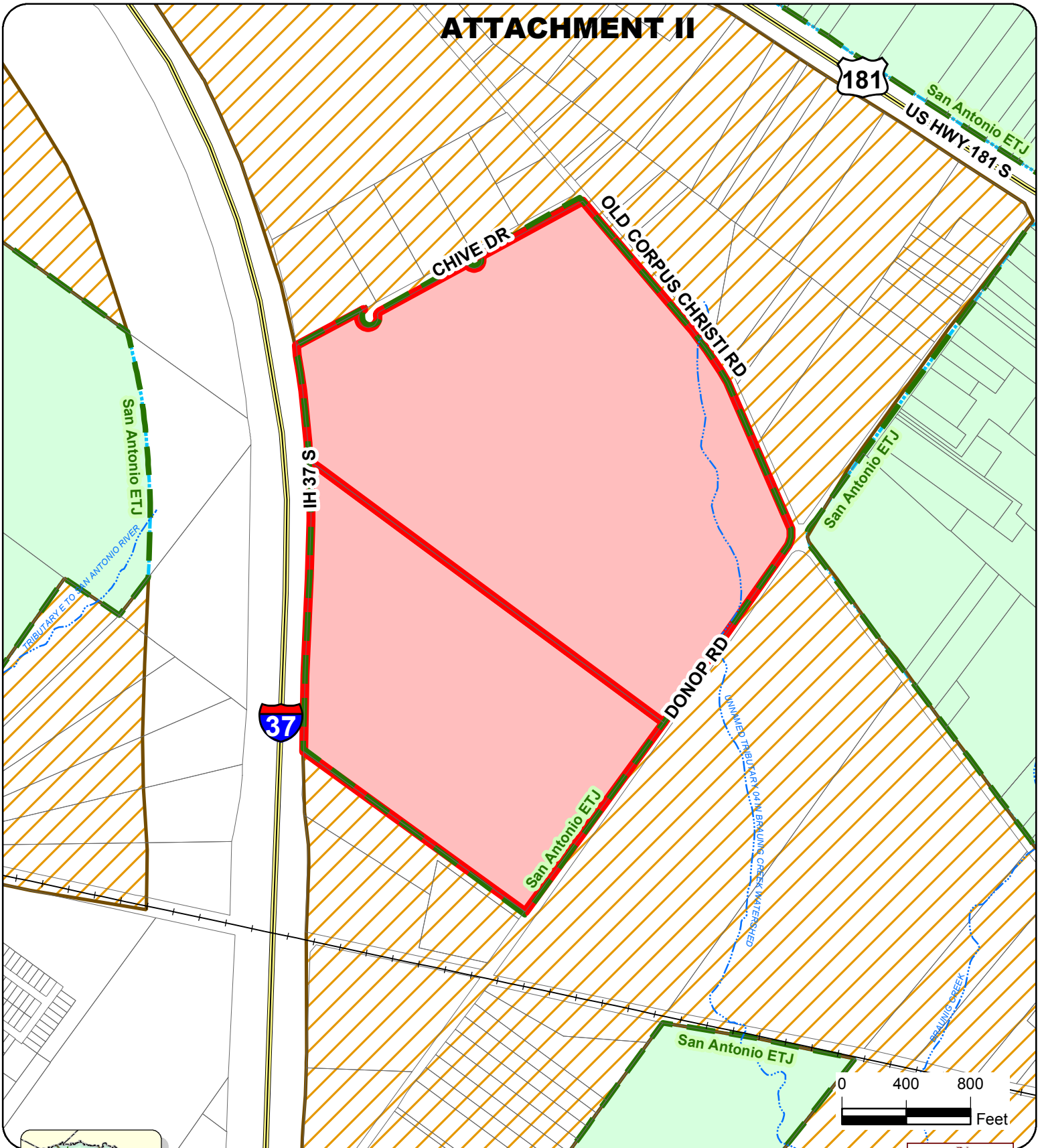

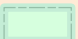
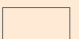

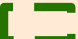




ATTACHMENT II




-  Nabors Property
-  Bexar County
-  BCAD Parcels
-  City of San Antonio
-  Extraterritorial Jurisdiction Line
-  Limited Purpose Annexations
-  Expressways



City of San Antonio Voluntary Annexation of the Nabors Property

City of San Antonio
Information Technology Services Department
GIS Public Services Division

Riverview Towers
111 Soledad St. 9th Floor
San Antonio, TX 78205



Data Source: City of San Antonio Enterprise GIS, Bexar Metro 911, Bexar Appraisal District
 *This Geographic Information System Product, received from The City of San Antonio is provided "as is" without warranty of any kind, and the City of San Antonio expressly disclaims all express and implied warranties, including but not limited to the implied warranties of merchantability and fitness for a particular purpose. The City of San Antonio does not warrant, guarantee, or make any representations regarding the use, or the results of the use, of the information provided to you by the City of San Antonio in terms of completeness, accuracy, reliability, timeliness or otherwise.
 The entire risk as to the results and performance of any information obtained from the City of San Antonio is solely assumed by the recipient.
 **Please contact the responsible City of San Antonio Department for specific determinations.
 Maps may be ordered at: (210) 207-8301
 Map Last Edited: 4/8/2016
 PDF Filename: 16046563.pdf
 Map file location: W:\CoSADeptsAndOffices_FY2015_2016\PlanningAndCommunityDevelopment\VoluntaryAnnexation\Nabors Property.mxd