

# FEMA Map Update

---



Community Healthy and Equity

January 25, 2018

Presented by: Nefi Garza, PE

Assistant Director, Transportation & Capital Improvements



# FEMA History

---



**FEMA**



# Bexar Regional Watershed Management



Planning &  
Mapping

Implementation

Implementation

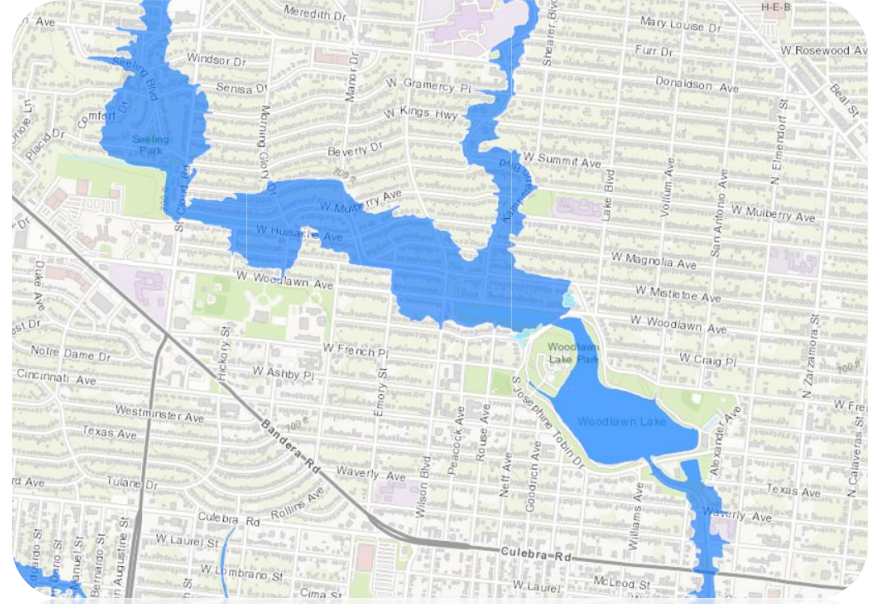
Implementation



# Identifying Risk



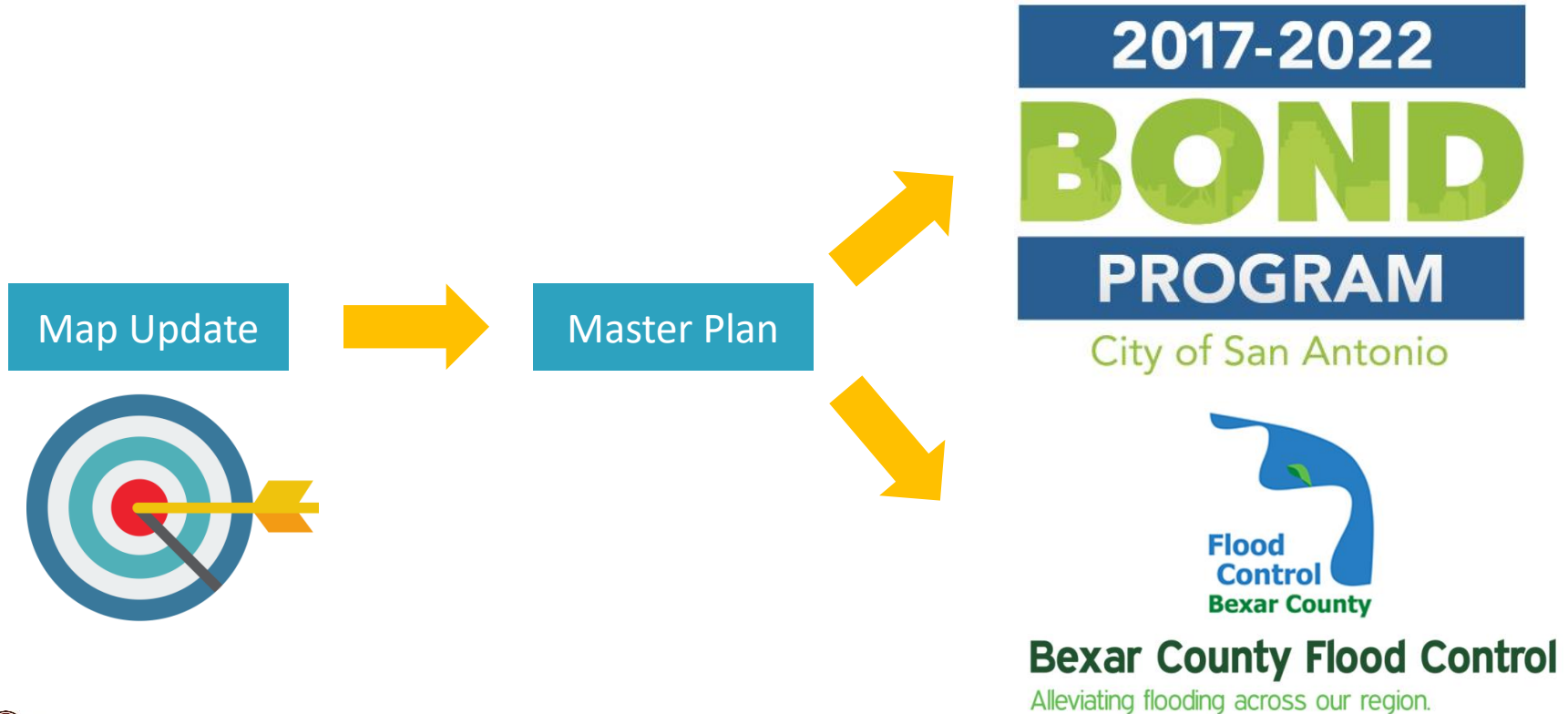
Low Water Crossings



Floodplain Maps



# Future Projects



# Flood Insurance

---



## RiskMAP

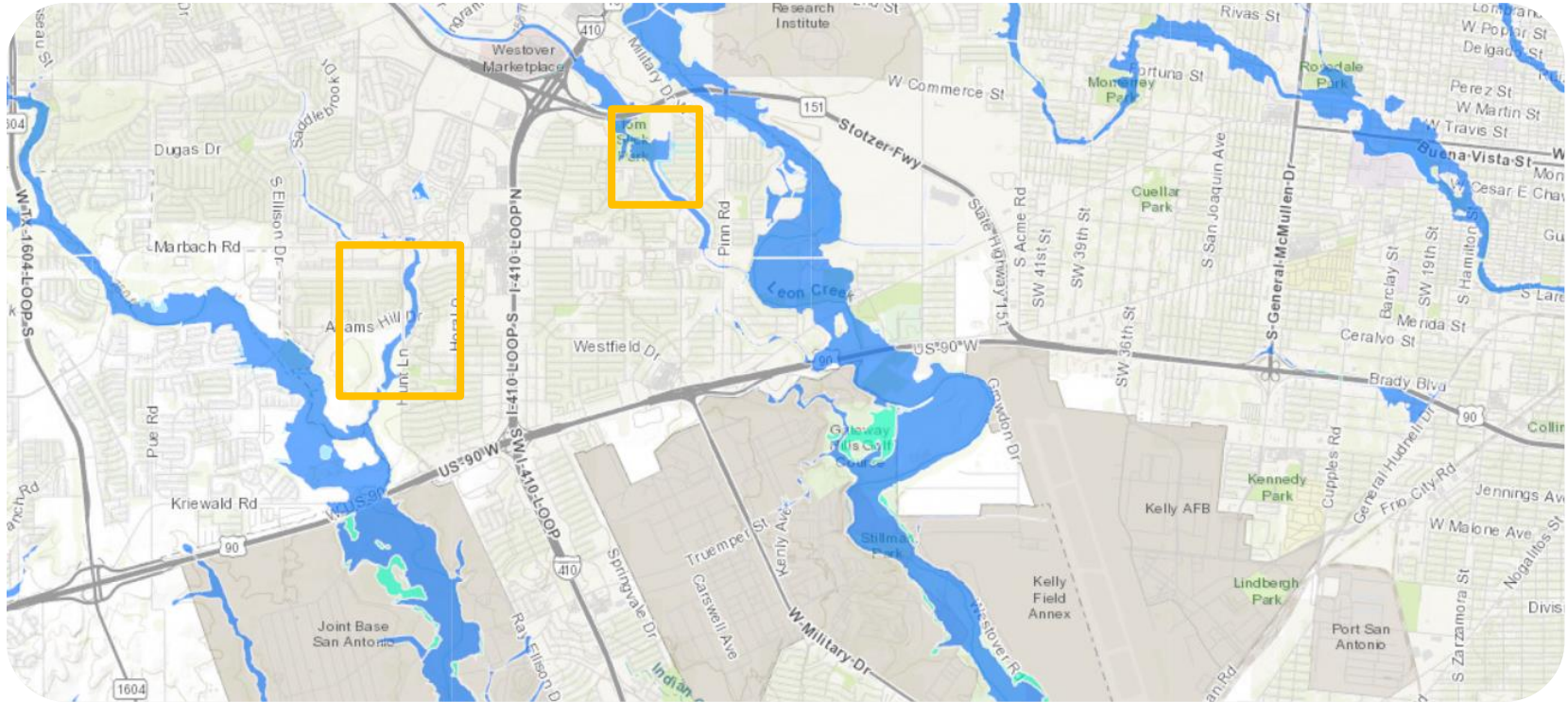
Increasing Resilience Together



<https://www.sara-tx.org/flood-management/riskmap/>



# City Wide vs. LOMR Update





# Flood Study Development

## Hydrology

- Topographical maps
- Soils
- Impervious Cover
- Rainfall
- Flow Patterns

## Hydraulics

- Green space
- Impervious cover
- Bridge Infrastructure

## Mapping

- GIS



# Process & Timeline



2018

**Survey**  
**Parameter Development**  
**Hydrology**  
**Hydraulics**

2019

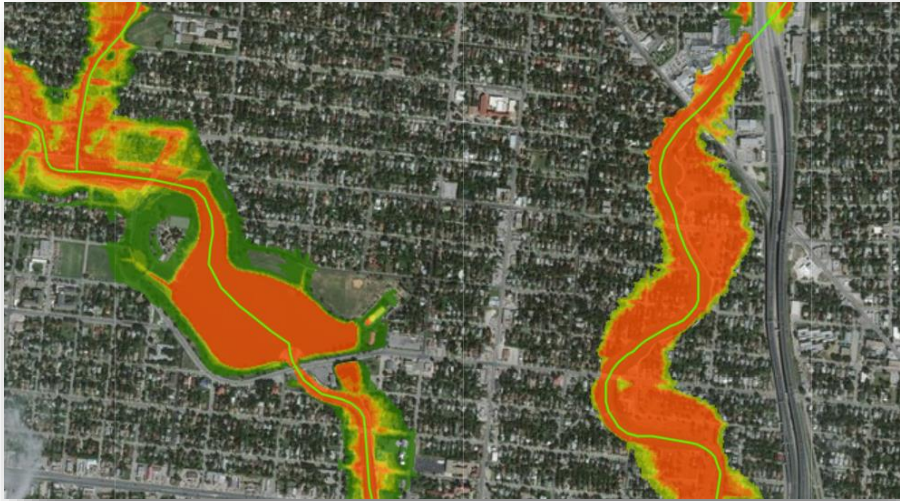
**Hydraulics**  
**Mapping**  
**Review**

2020

**Adoption**



# Community Rating System



100-Year Ultimate

High Water Alert

No Adverse Impact

Application

- Late 2018
- Early 2019



Acceptance

- 1 Year after submission



# FEMA Map Update

---



Community Healthy and Equity

January 25, 2018

Presented by: Nefi Garza, PE

Assistant Director, Transportation & Capital Improvements

