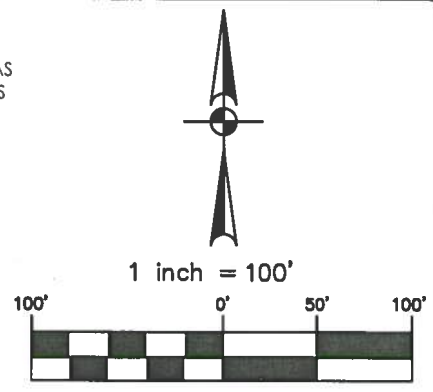




LOCATION MAP
 MAPSCO MAP GRID: 518B4
 NOT-TO-SCALE

LEGEND:
 DR DEED RECORDS OF BEXAR COUNTY, TEXAS
 OPR OFFICIAL PUBLIC RECORDS OF BEXAR COUNTY, TEXAS
 DPR DEED AND PLAT RECORDS OF BEXAR COUNTY, TEXAS
 FIR FOUND 1/2" IRON ROD

NOTES:
 1. THE PROFESSIONAL SERVICES PROVIDED HERewith INCLUDE THE PREPARATION OF A FIELD NOTE DESCRIPTION.
 2. THE BEARINGS ARE BASED ON THE TEXAS COORDINATE SYSTEM ESTABLISHED FOR THE SOUTH CENTRAL ZONE FROM THE NORTH AMERICAN DATUM OF 1983 NAD 83 (NA2011) EPOCH 2010.00.



12.98 ACRES
 CHRISTINE ANN GARZA
 (VOL. 14062 PG. 1552 OPR)

P.O.C.
 FD. 1/2" I.R.

VARIABLE WIDTH DRAINAGE EASEMENT
0.059 OF AN ACRE
 (2,571 SQUARE FEET MORE OR LESS)

J. GOLL SURVEY 395
 ABSTRACT 297
 NCB 17725

4.074 ACRES
 REDLAND SPRINGS ASSOCIATION, INC.
 (VOL. 10268, PG. 1511 OPR)

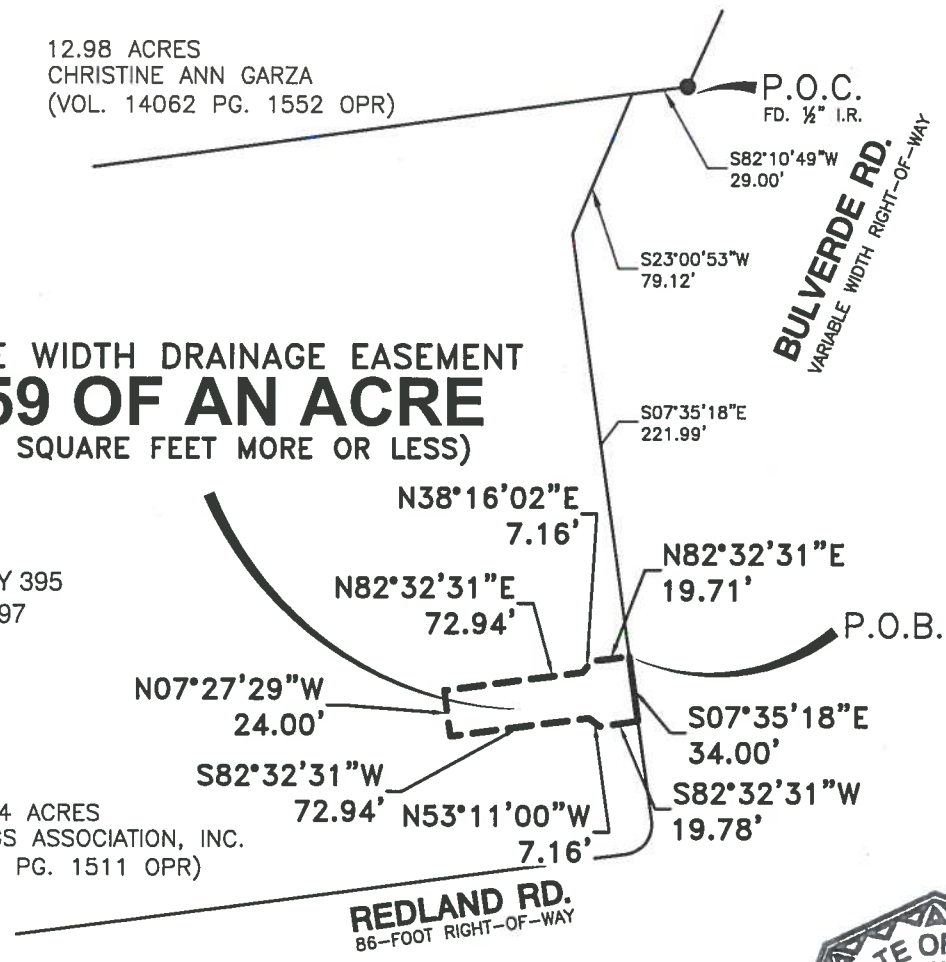


EXHIBIT
OF
VARIABLE WIDTH DRAINAGE EASEMENT

A 0.059 ACRE, OR 2571 SQUARE FEET MORE OR LESS, EASEMENT LOCATED ON A 4.074 ACRE TRACT, CONVEYED TO REDLAND SPRINGS ASSOCIATION, LP., IN DEED RECORDED VOLUME 10268, PAGE 1511 OF THE OFFICIAL PUBLIC RECORDS OF REAL PROPERTY OF VEXAR COUNTY, TEXAS, OUT OF THE J. GOLL SURVEY NUMER 395, ABSTRACT 297, NEW CITY BLOCK 17725, IN THE CITY OF SAN ANTONIO, BEXAR COUNTY, TEXAS.



555 EAST RAMSEY | SAN ANTONIO TEXAS 78216 | PHONE: 210.375.9000
 FAX: 210.375.9010
 TEXAS BOARD OF PROFESSIONAL ENGINEERS, FIRM REGISTRATION # 470
 TEXAS BOARD OF PROFESSIONAL LAND SURVEYORS, FIRM REGISTRATION # 100298-00

Date: May 15, 2014, 3:20pm User ID: DCasanova
 File: N:\CIVIL\8207-20\8207-20 0.059 ACRE DRN-ESMT.dwg

May 13, 2014

JOB No.:

SHEET 1 OF 1

8207-20

FIELD NOTES
FOR
VARIABLE WIDTH DRAINAGE EASEMENT

A 0.059 of an acre, or 2571 square feet more or less, easement located on a 4.074 acre tract, conveyed to Redland Springs Association, LP. in Deed recorded Volume 10268, Page 1511 of the Official Public Records of Real Property of Bexar County, Texas, out of the J. Goll Survey Number 395, Abstract 297, New City Block 17725. Said 0.059 of an acre easement being more fully described as follows, with bearings based on the Texas Coordinate System established for the South Central Zone from the North American Datum of 1983 NAD 83 (NA2011) epoch 2010.00;

COMMENCING: At a found ½ iron rod on the west right-of-way line of Bulverde Road, a variable width right-of-way at the southeast corner of a 12.98 acre tract recorded in Volume 14062, Page 1552 of the Official Public Records of Real Property of Bexar County, Texas;

THENCE: S 82°10'49" W, along and with the west right-of-way line of said Bulverde Road, the southeast line of said 12.98 acre tract, along the right-of-way line a distance of 29.00 feet to the northeast corner of said 4.074 acre tract;

THENCE: S 23°00'53" W departing the southeast line of said 12.98 acre tract, along and with the west right-of-way line of said Bulverde Road and the east line of said 4.074 acre tract, a distance of 79.12 feet to a point;

THENCE: S 7°35'18" E continuing along and with the west right-of-way line of said Bulverde Road and the east line of said 4.074 acre tract, a distance of 221.99 feet to the POINT OF BEGINNING of the herein described tract;

THENCE: S 07°35'18" E, continuing along and with the west right-of-way line of said Bulverde Road, the east line of said 4.074 acre tract a distance of 34.00 feet to a point;

THENCE: Departing the west right-of-way line of said Bulverde Road, over and across said 4.074 acre tract the following bearings and distances:

S 82°32'31" W a distance of 19.78 feet to a point;

N 53°11'00" W, a distance of 7.16 feet to a point;

S 82°32'31" W, a distance of 72.94 feet to a point;

N 07°27'29" W, a distance of 24.00 feet to a point;

N 82°32'31" E, a distance of 72.94 feet to a point;

N 38°16'02" E, a distance of 7.16 feet to a point;

N 82°32'31" E, a distance of 19.71 feet to the POINT OF BEGINNING,
and containing 0.059 of an acre in the City of San Antonio, Bexar County,
Texas. Said easement tract being described in accordance with an exhibit
prepared under job number 8207-20 by Pape-Dawson Engineers, Inc.

PREPARED BY: Pape-Dawson Engineers, Inc.
DATE: May 13, 2014
JOB NO. 8207-20
DOC. ID. N:\CIVIL\8207-20\Word\8207-20 0.059 ACRE DRN-ESMT.docx
TBPE Firm Registration #470
TBPLS Firm Registration #100288-00

