

City of San Antonio



Proposed Regional Commercial



STOUT

Industrial

STUTTS

CROSSWAY

PEGGY







Martindale Army Air Field

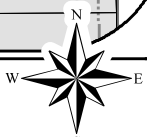
Community Commercial

Low Density Residential

Low Density Residential

Low Density Residential

-  200' Notification Area
-  Low Density Residential
-  Business Park
-  Proposed Regional Commercial
-  Community Commercial
-  Industrial



Data Source: City of San Antonio Enterprise GIS, Bexar Metro 911, Bexar Appraisal District
 This geographic information system product, received from The City of San Antonio is provided "as is" without warranty of any kind, and the City of San Antonio expressly disclaims any and all warranties, including but not limited to the implied warranties of merchantability and fitness for a particular purpose. The City of San Antonio does not warrant, guarantee, or make any representation regarding the accuracy or the result of the use of the information provided to you by the City of San Antonio or any of its contractors. In reliance on the information provided to you, the user assumes all liability for any and all uses of the information provided to you by the City of San Antonio or any of its contractors. Where contact is required, City of San Antonio, Department of Information Systems, 100 N. Nueces Street, San Antonio, TX 78202.
 Map Created by: Gustavo Gutierrez
 Map Last Edited: 5/27/2020
 Map File Location: \\s:\common\m\sc\21600052\plan_180\plan_180\Archived\Neighborhoods\Land_Use\Amendments\Amend_2011600052_IH0ECorridor_BAW.mxd
 PDF File Name: 2020GG.pdf

IH-10 E Corridor Perimeter Plan

Proposed Plan Amendment 2011600052 Area

City of San Antonio
 Planning and Community
 Development Department
 John M. Dugan, AICP
 Director
City of San Antonio Planning and
 Business Services Center
 PO Box 83966-8
 San Antonio, TX 78283

