

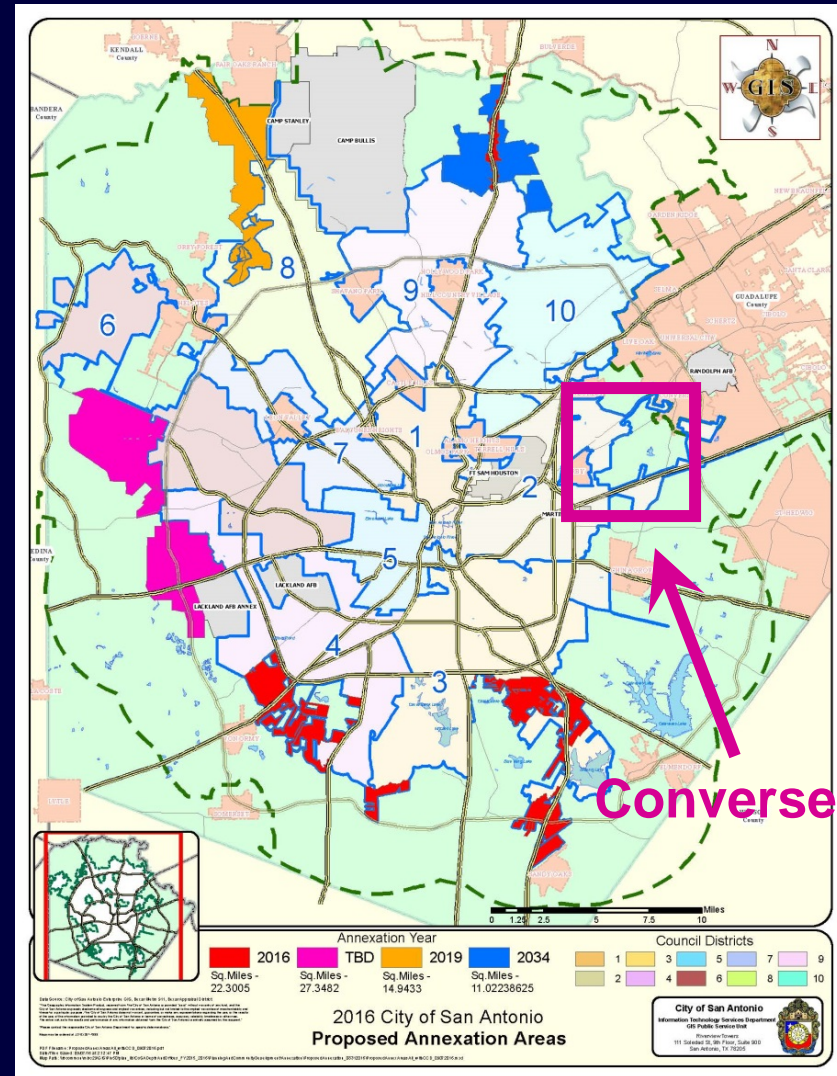
The City of Converse's Request for Extraterritorial Jurisdiction Release



Agenda Item
City Council
March 9, 2017

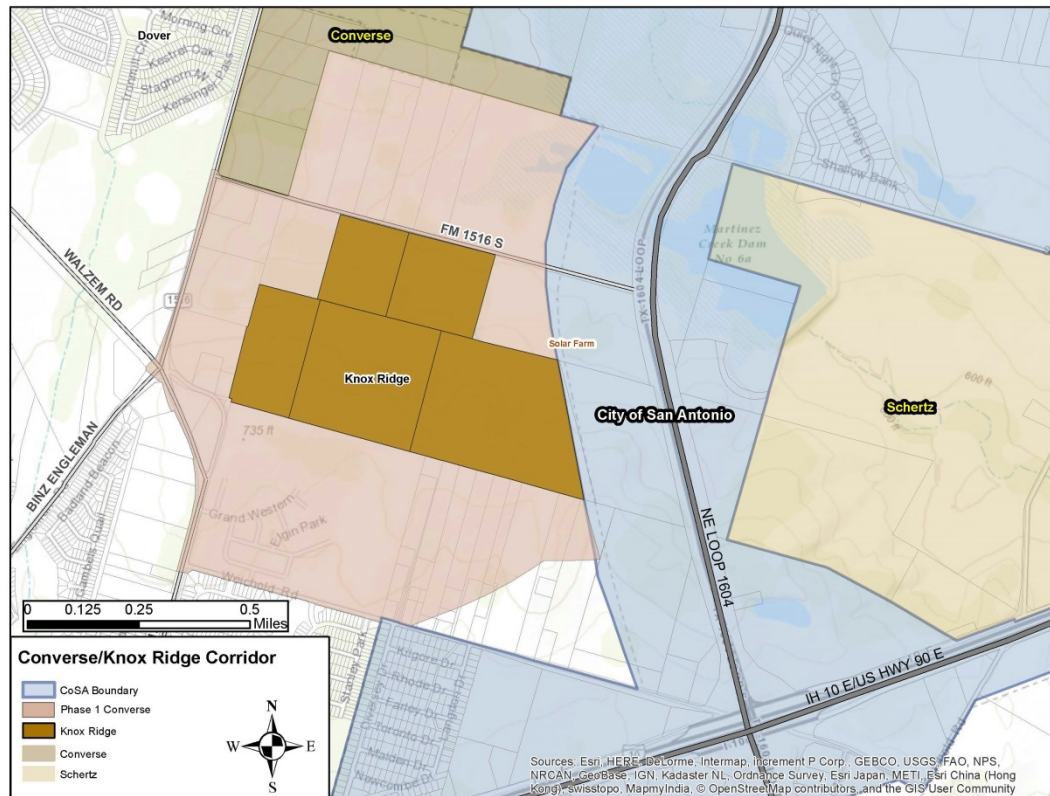
City of Converse

- Located in eastern Bexar County
- 21,987 people (2015 Census)
- In 1979, San Antonio released 152 acres to Converse
- In 2006, San Antonio released 109 acres to Converse



ETJ Release Requested

- ETJ Release would consist of approximately 600 acres
- Located northwest of the intersection of NE Loop 1604 and Interstate 10 East



Knox Ridge Subdivision

- Single-Family Residential Subdivision Proposed (184.588 acres, 4 units per acre)
 - Converse partnering with developer to establish Tax Increment Reinvestment Zone upon annexation



Recommendation

DPCD recommends Approval of the release of approximately 600 acres from the City of San Antonio's ETJ to the City of Converse.