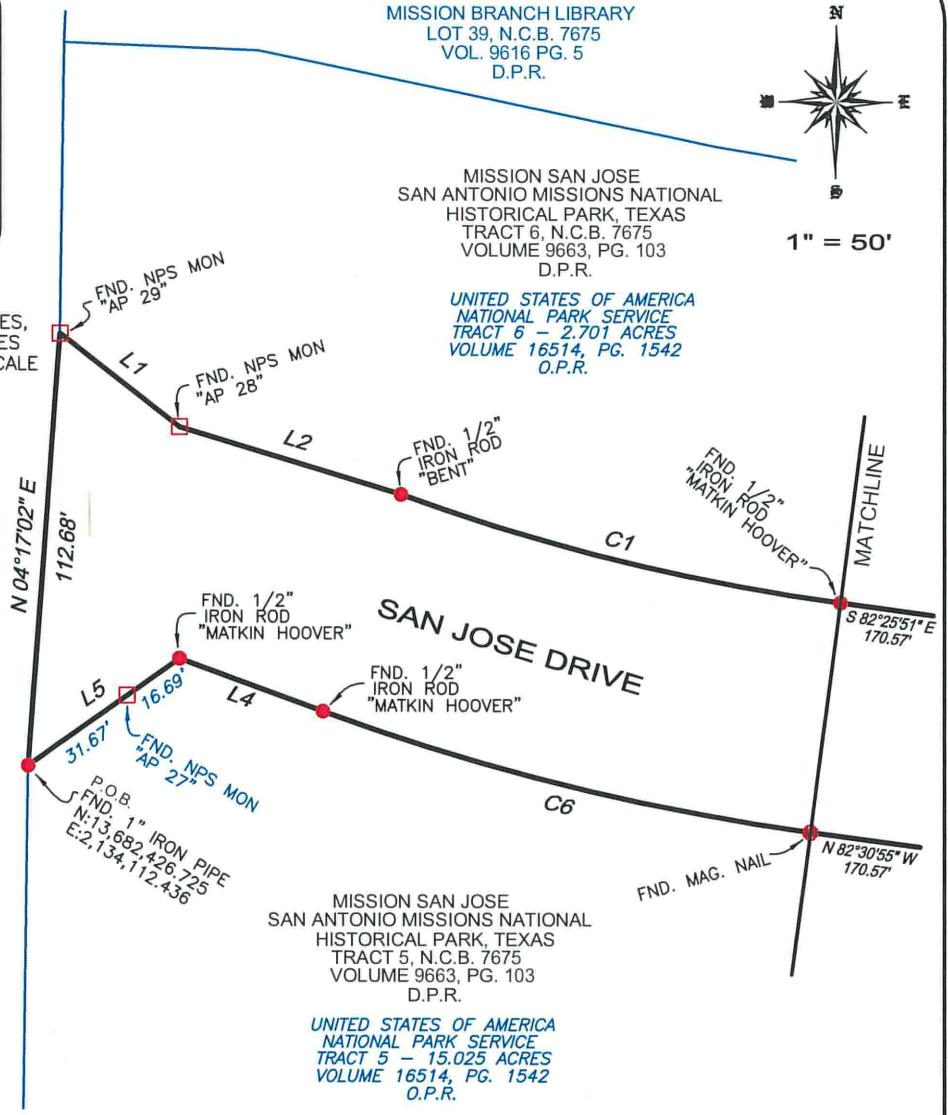


BEARING AND COORDINATES ARE BASED ON LAMBERT GRID, TEXAS STATE PLANE COORDINATES, SOUTH CENTRAL ZONE NAD 83/93; COORDINATES SHOWN HEREON HAVE AN APPLIED SURFACE SCALE FACTOR OF 1.00017

ROOSEVELT AVENUE
(120' R.O.W.)



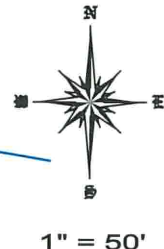
MISSION BRANCH LIBRARY
LOT 39, N.C.B. 7675
VOL. 9616 PG. 5
D.P.R.

MISSION SAN JOSE
SAN ANTONIO MISSIONS NATIONAL
HISTORICAL PARK, TEXAS
TRACT 6, N.C.B. 7675
VOLUME 9663, PG. 103
D.P.R.

UNITED STATES OF AMERICA
NATIONAL PARK SERVICE
TRACT 6 - 2.701 ACRES
VOLUME 16514, PG. 1542
O.P.R.

MISSION SAN JOSE
SAN ANTONIO MISSIONS NATIONAL
HISTORICAL PARK, TEXAS
TRACT 5, N.C.B. 7675
VOLUME 9663, PG. 103
D.P.R.

UNITED STATES OF AMERICA
NATIONAL PARK SERVICE
TRACT 5 - 15.025 ACRES
VOLUME 16514, PG. 1542
O.P.R.



LINE	BEARING	DISTANCE
L1	S 52°03'18" E	39.41'
L2	S 73°11'27" E	60.61'
L4	N 69°55'07" W	39.97'
L5	S 54°44'43" W	48.36'

CURVE	ARC LENGTH	RADIUS	DELTA ANGLE	CHORD BEARING	CHORD LENGTH
C1	118.40'	543.69'	12°28'40"	S 76°17'49" E	118.17'
C6	131.51'	603.69'	12°28'55"	N 76°11'48" W	131.25'



THIS SURVEY WAS MADE ON THE GROUND, UNDER MY SUPERVISION AND COMPLIES WITH THE CURRENT TEXAS SOCIETY OF PROFESSIONAL SURVEYOR'S STANDARDS AND SPECIFICATIONS FOR A CATEGORY 1B, CONDITION 2.

Rex L. Hackett

REX L. HACKETT, R.P.L.S., L.S.L.S.
REGISTERED PROFESSIONAL LAND SURVEYOR
LICENSE NO. 5573
DATE: 05-10-2016
PROJECT NO. 1802.08

PLAT SHOWING
1.168 ACRES
50,883.8 Sq. Feet

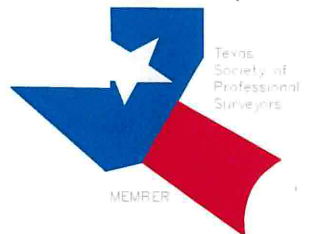
BEING A PORTION OF SAN JOSE DRIVE SITUATED BETWEEN TRACT 5 AND TRACT 6, N.C.B. 7675 AS SHOWN ON THE PLAT OF MISSION SAN JOSE SAN ANTONIO MISSIONS NATIONAL HISTORICAL PARK, TEXAS RECORDED IN VOLUME 9663, PAGE 103 OF THE DEED AND PLAT RECORDS OF BEXAR CO., TX.

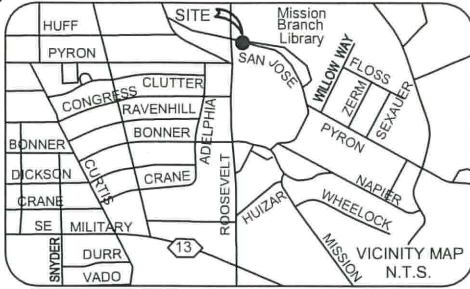


MEMBER

FORD ENGINEERING INC.

ENGINEERING * SURVEYING * PLANNING
10927 WYE DRIVE, STE 104, SAN ANTONIO, TEXAS 78217 * P.(210) 590-4777 * F.(210-590-4940)
TBPE No. 11623 * WWW.FORDENGINEERING.COM * TBPLS No. 10018400





MISSION BRANCH LIBRARY
 LOT 39, N.C.B. 7675
 VOL. 9616 PG. 5
 D.P.R.

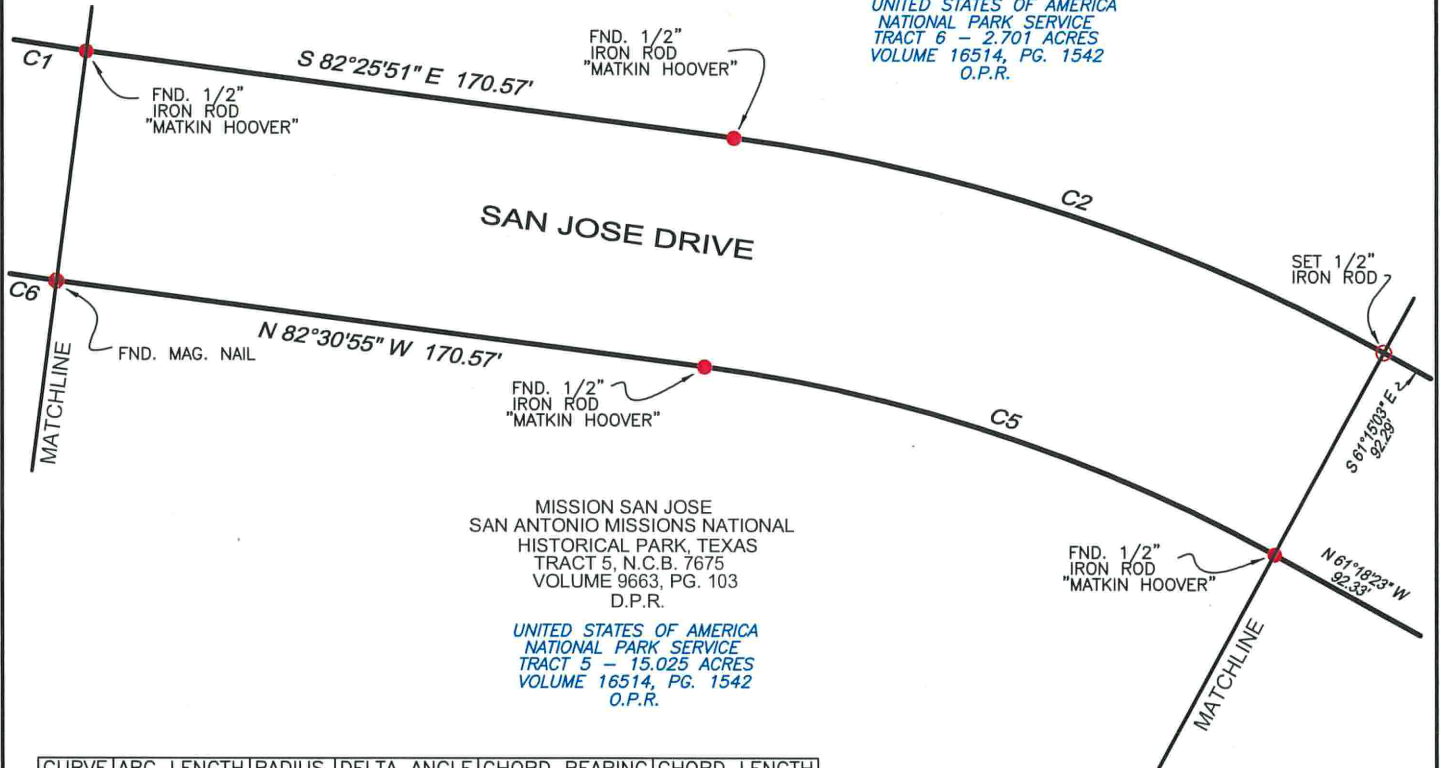


1" = 50'

BEARING AND COORDINATES ARE BASED ON LAMBERT GRID, TEXAS STATE PLANE COORDINATES, SOUTH CENTRAL ZONE NAD 83/93; COORDINATES SHOWN HEREON HAVE AN APPLIED SURFACE SCALE FACTOR OF 1.00017

MISSION SAN JOSE
 SAN ANTONIO MISSIONS NATIONAL HISTORICAL PARK, TEXAS
 TRACT 6, N.C.B. 7675
 VOLUME 9663, PG. 103
 D.P.R.

UNITED STATES OF AMERICA
 NATIONAL PARK SERVICE
 TRACT 6 - 2.701 ACRES
 VOLUME 16514, PG. 1542
 O.P.R.



MISSION SAN JOSE
 SAN ANTONIO MISSIONS NATIONAL HISTORICAL PARK, TEXAS
 TRACT 5, N.C.B. 7675
 VOLUME 9663, PG. 103
 D.P.R.

UNITED STATES OF AMERICA
 NATIONAL PARK SERVICE
 TRACT 5 - 15.025 ACRES
 VOLUME 16514, PG. 1542
 O.P.R.

CURVE	ARC LENGTH	RADIUS	DELTA ANGLE	CHORD BEARING	CHORD LENGTH
C1	118.40'	543.69'	12°28'40"	S 76°17'49" E	118.17'
C2	180.02'	486.00'	21°13'22"	S 71°55'29" E	178.99'
C5	157.79'	426.00'	21°13'22"	N 71°55'29" W	156.89'
C6	131.51'	603.69'	12°28'55"	N 76°11'48" W	131.25'



THIS SURVEY WAS MADE ON THE GROUND, UNDER MY SUPERVISION AND COMPLIES WITH THE CURRENT TEXAS SOCIETY OF PROFESSIONAL SURVEYOR'S STANDARDS AND SPECIFICATIONS FOR A CATEGORY 1B, CONDITION 2.

[Signature]

REX L. HACKETT, R.P.L.S., L.S.L.S.
 REGISTERED PROFESSIONAL LAND SURVEYOR
 LICENSE NO. 5573
 DATE: 05-10-2016
 PROJECT NO. 1802.08

PLAT SHOWING

1.168 ACRES
50,883.8 Sq. Feet

BEING A PORTION OF SAN JOSE DRIVE SITUATED BETWEEN TRACT 5 AND TRACT 6, N.C.B. 7675 AS SHOWN ON THE PLAT OF MISSION SAN JOSE SAN ANTONIO MISSIONS NATIONAL HISTORICAL PARK, TEXAS RECORDED IN VOLUME 9663, PAGE 103 OF THE DEED AND PLAT RECORDS OF BEXAR CO., TX.



MEMBER

PAGE 2 OF 3

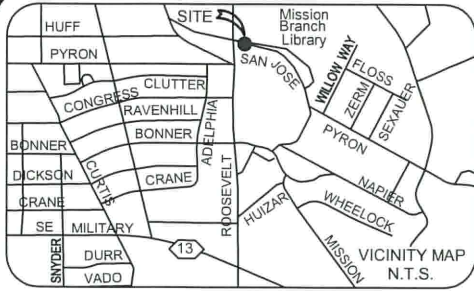


FORD ENGINEERING INC.

ENGINEERING * SURVEYING * PLANNING
 10927 WYE DRIVE, STE 104, SAN ANTONIO, TEXAS 78217 * P.(210) 590-4777 * F.(210-590-4940)
 TBPE No. 11623 * WWW.FORDENGINEERING.COM * TBPLS No. 10018400



MEMBER



BEARING AND COORDINATES ARE BASED ON LAMBERT GRID, TEXAS STATE PLANE COORDINATES, SOUTH CENTRAL ZONE NAD 83/93; COORDINATES SHOWN HEREON HAVE AN APPLIED SURFACE SCALE FACTOR OF 1.00017



1" = 50'

MISSION BRANCH LIBRARY
LOT 39, N.C.B. 7675
VOL. 9616 PG. 5
D.P.R.

REMAINDER OF 21.62 AC.
VOL. 2333 PG. 274
DEED RECORDS

U.S.A.
TRACT 102-20
9.113 ACRES
VOL. 8929 PG 1361
O.P.R.

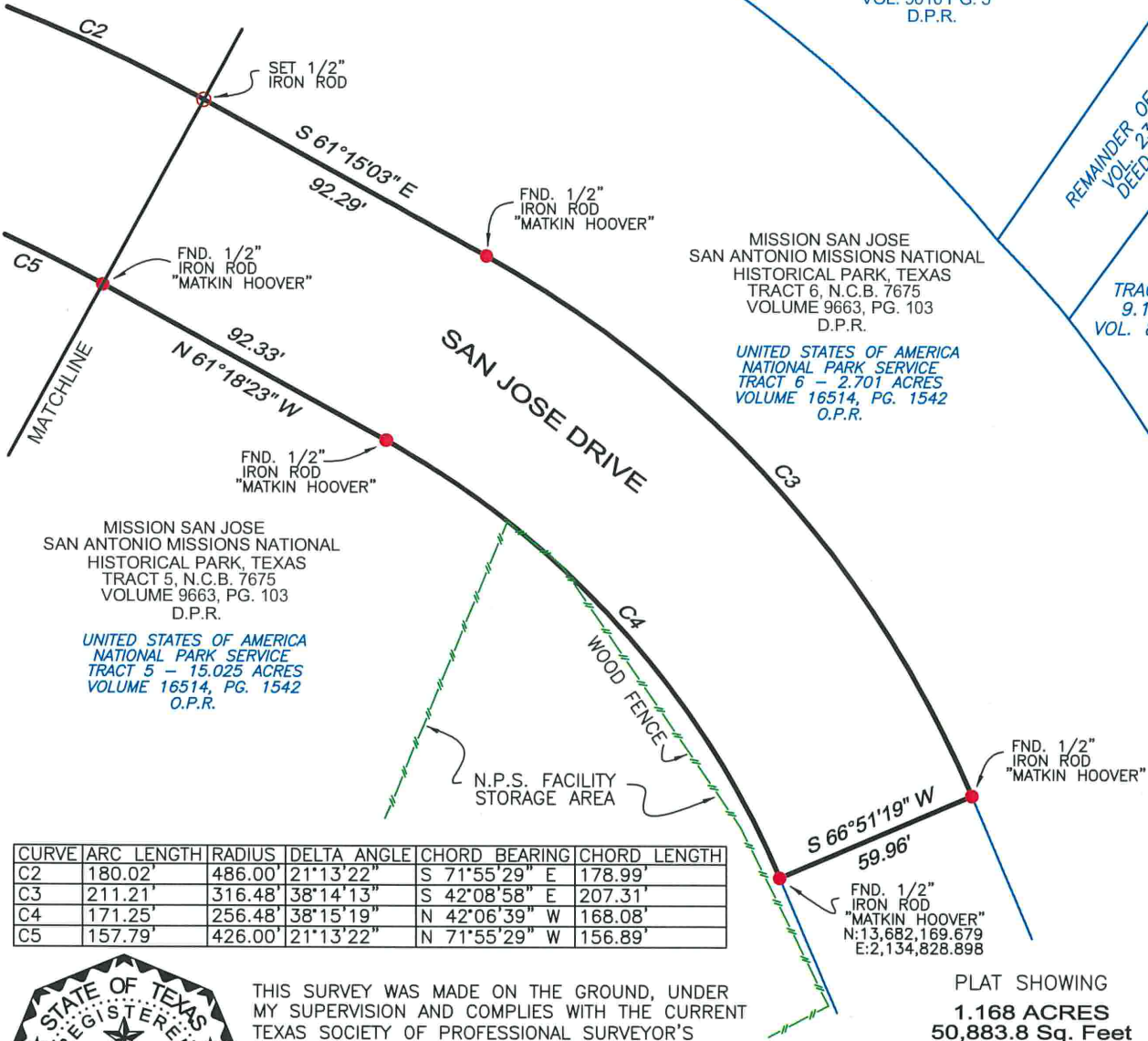
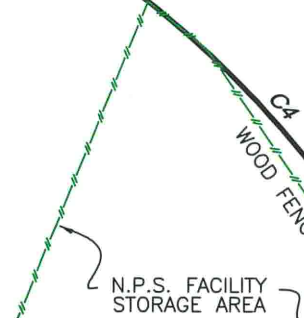
MISSION SAN JOSE
SAN ANTONIO MISSIONS NATIONAL
HISTORICAL PARK, TEXAS
TRACT 6, N.C.B. 7675
VOLUME 9663, PG. 103
D.P.R.

UNITED STATES OF AMERICA
NATIONAL PARK SERVICE
TRACT 6 - 2.701 ACRES
VOLUME 16514, PG. 1542
O.P.R.

MISSION SAN JOSE
SAN ANTONIO MISSIONS NATIONAL
HISTORICAL PARK, TEXAS
TRACT 5, N.C.B. 7675
VOLUME 9663, PG. 103
D.P.R.

UNITED STATES OF AMERICA
NATIONAL PARK SERVICE
TRACT 5 - 15.025 ACRES
VOLUME 16514, PG. 1542
O.P.R.

SAN JOSE DRIVE



CURVE	ARC LENGTH	RADIUS	DELTA ANGLE	CHORD BEARING	CHORD LENGTH
C2	180.02'	486.00'	21°13'22"	S 71°55'29" E	178.99'
C3	211.21'	316.48'	38°14'13"	S 42°08'58" E	207.31'
C4	171.25'	256.48'	38°15'19"	N 42°06'39" W	168.08'
C5	157.79'	426.00'	21°13'22"	N 71°55'29" W	156.89'

FND. 1/2" IRON ROD "MATKIN HOOVER"
N:13,682,169.679
E:2,134,828.898

PLAT SHOWING
1.168 ACRES
50,883.8 Sq. Feet

BEING A PORTION OF SAN JOSE DRIVE SITUATED BETWEEN TRACT 5 AND TRACT 6, N.C.B. 7675 AS SHOWN ON THE PLAT OF MISSION SAN JOSE SAN ANTONIO MISSIONS NATIONAL HISTORICAL PARK, TEXAS RECORDED IN VOLUME 9663, PAGE 103 OF THE DEED AND PLAT RECORDS OF BEXAR CO., TX.



THIS SURVEY WAS MADE ON THE GROUND, UNDER MY SUPERVISION AND COMPLIES WITH THE CURRENT TEXAS SOCIETY OF PROFESSIONAL SURVEYOR'S STANDARDS AND SPECIFICATIONS FOR A CATEGORY 1B, CONDITION 2.

Rex L. Hackett
REX L. HACKETT, R.P.L.S., I.S.L.S.
REGISTERED PROFESSIONAL LAND SURVEYOR
LICENSE NO. 5573
DATE: 05-10-2016
PROJECT NO. 1802.08

PAGE 3 OF 3



MEMBER

FORD ENGINEERING INC.
ENGINEERING * SURVEYING * PLANNING
10927 WYE DRIVE, STE 104, SAN ANTONIO, TEXAS 78217 * P.(210) 590-4777 * F.(210-590-4940)
TBPE No. 11623 * WWW.FORDENGINEERING.COM * TBPLS No. 10018400



MEMBER



FORD ENGINEERING, INC

Date: May 10, 2016
Project No: 1802.08

FIELD NOTES DESCRIPTION 1.168 ACRES (50,883.8 sq. ft.)

A 1.168 acre (50,883.8 sq. ft.) tract of land, being a portion of a San Jose Drive situated between Tracts 5 and 6, N.C.B. 7675 conveyed to the United States of America, c/o National Park Service in Volume 16514, Page 1542 of the Official Public Records of Real Property of Bexar County, Texas, as shown on the plat of Mission San Jose San Antonio Missions National Historical Park, Texas recorded in Volume 9663, Page 103 of the Deed and Plat Records of Bexar County, Texas, being more particularly described as follows:

BEGINNING: at a 1 inch iron pipe (N = 13,682,426.725, E = 2,134,112.436) found on the Eastern line of Roosevelt Avenue (120' R.O.W.) for the Northwestern corner of said Tract 5, a corner of said San Jose Drive, for a corner of this tract;

THENCE: N 04°17'02" E – 112.68 feet along the Eastern line of said Roosevelt Avenue to a National Park Service Monument marked "AP 29" found for the Southwestern corner of said Tract 6, a corner of said San Jose Drive, for a corner of this tract;

THENCE: S 52°03'18" E – 39.41 feet along a Southern line of said Tract 6, a Northern line of said San Jose Drive to a National Park Service Monument marked "AP 28" found for a corner of said Tract 6, a corner of said San Jose Drive, for a corner of this tract;

THENCE: S 73°11'27" E – 60.61 feet continuing along a Southern line of said Tract 6, a Northern line of said San Jose Drive to a ½ inch bent iron rod found for a corner of said Tract 6, a corner of said San Jose Drive, for a corner of this tract;

THENCE: Continuing along a Southern line of said Tract 6, a Northern line of said San Jose Drive, a curve to the left having a Delta angle of 12°28'40", a Radius of 543.69 feet, an Arc length of 118.40 feet and a Chord bearing of S 76°17'49" E – 118.17 feet to a ½ inch iron rod with cap marked "Matkin Hoover" found for a corner of said Tract 6, a corner of said San Jose Drive, for a corner of this tract;

THENCE: S 82°25'51" E – 170.57 feet continuing along a Southern line of said Tract 6, a Northern line of said San Jose Drive to a ½ inch iron rod with cap marked "Matkin Hoover" found for a corner of said Tract 6, a corner of said San Jose Drive, for a corner of this tract;

THENCE: Continuing along a Southwestern line of said Tract 6, a Northern line of said San Jose Drive, a curve to the right having a Delta angle of 21°13'22", a Radius of 486.00 feet, an



FORD ENGINEERING, INC

Arc length of 180.02 feet and a Chord bearing of S 71°55'29" E – 178.99 feet to a ½ inch iron rod with yellow plastic cap marked "Ford Eng Inc" set for a corner of said Tract 6, a corner of said San Jose Drive, for a corner of this tract;

THENCE: S 61°15'03" E – 92.29 feet continuing along a Southwestern line of said Tract 6, a Northeastern line of said San Jose Drive to a ½ inch iron rod with cap marked "Matkin Hoover" found for a corner of said Tract 6, a corner of said San Jose Drive, for a corner of this tract;

THENCE: Continuing along a Southwestern line of said Tract 6, a Northern line of said San Jose Drive, a curve to the right having a Delta angle of 38°14'13", a Radius of 316.48 feet, an Arc length of 211.21 feet and a Chord bearing of S 42°08'58" E – 207.31 feet to a ½ inch iron rod with cap marked "Matkin Hoover" found for a corner of said Tract 6, a corner of said San Jose Drive, for a corner of this tract;

THENCE: S 66°51'19" W – 59.96 feet across said San Jose Drive to a ½ inch iron rod (N = 13,682,169.679, E = 2,134,828.898) with cap marked "Matkin Hoover" found for a corner of said Tract 5, a corner of said San Jose Drive, for a corner of this tract;

THENCE: Along a Northeastern line of said Tract 5, a Southwestern line of said San Jose Drive, a curve to the left having a Delta angle of 38°15'19", a Radius of 256.48 feet, an Arc length of 171.25 feet, a Chord bearing of N 42°06'39" W – 168.08 feet to a ½ inch iron rod with cap marked "Matkin Hoover" found for a corner of said Tract 5, a corner of said San Jose Drive, for a corner of this tract;

THENCE: N 61°18'23" W – 92.33 feet continuing along a Northeastern line of said Tract 5, a Southwestern line of said San Jose Drive to a ½ inch iron rod with cap marked "Matkin Hoover" found for a corner of said Tract 5, a corner of said San Jose Drive, for a corner of this tract;

THENCE: Continuing along a Northeastern line of said Tract 5, a Southwestern line of said San Jose Drive, a curve to the left having a Delta angle of 21°13'22", a Radius of 426.00 feet, an Arc length of 157.79 feet and a Chord bearing of N 71°55'29" W – 156.89 feet to a ½ inch iron rod with cap marked "Matkin Hoover" found for a corner of said Tract 5, a corner of said San Jose Drive, for a corner of this tract;

THENCE: N 82°30'55" W – 170.57 feet continuing along a Northern line of said Tract 5, a Southern line of said San Jose Drive to a Mag Nail found for a corner of said Tract 5, a corner of said San Jose Drive, for a corner of this tract;

THENCE: Continuing along a Northern line of said Tract 5, a Southern line of said San Jose Drive, a curve to the right having a Delta angle of 12°28'55", a Radius of 603.69 feet, an Arc length of 131.51 feet and a Chord bearing of N 76°11'48" W – 131.25 feet to a ½ inch iron rod



FORD ENGINEERING, INC

with cap marked "Matkin Hoover" found for a corner of said Tract 5, a corner of said San Jose Drive, for a corner of this tract;

THENCE: N 69°55'07" W – 39.97 feet continuing along a Northern line of said Tract 5, Southern line of said San Jose Drive to a ½ inch iron rod with cap marked "Matkin Hoover" found for a corner of said Tract 5, a corner of said San Jose Drive, for a corner of this tract;

THENCE: S 54°44'43" W – continuing along a line of said Tract 5, a line of said San Jose Drive, at 16.69 feet pass a National Park Service monument marked "AP 27" found, **a Distance in all of 48.36 feet** to the **POINT OF BEGINNING** and containing 1.168 acres (50,883.8 sq. ft.) of land, *according to a survey made on the ground under my supervision*

Corresponding plat prepared.
1802.07.docx

BEARINGS AND COORDINATES ARE BASED ON LAMBERT GRID, TEXAS STATE PLANE COORDINATES, SOUTH CENTRAL ZONE NAD 83/93; COORDINATES SHOWN HEREON HAVE AN APPLIED SURFACE SCALE FACTOR OF 1.00017.



Rex L. Hackett, R.P.L.S., L.S.L.S.
Registered Professional Land Surveyor
License Number 5573