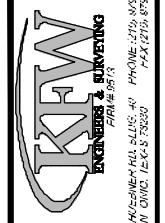
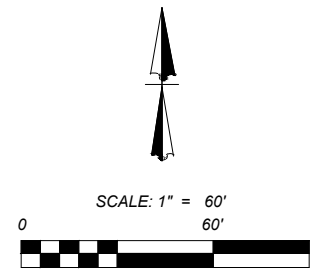


CITY LIMITS - SAN ANTONIO (APPROXIMATE LOCATION)
 TRACT IV
 146.9 ACRE TRACT
 MARIETTA MATERIALS SOUTHWEST, L.P.
 (VOL. 12046 PG. 2065)



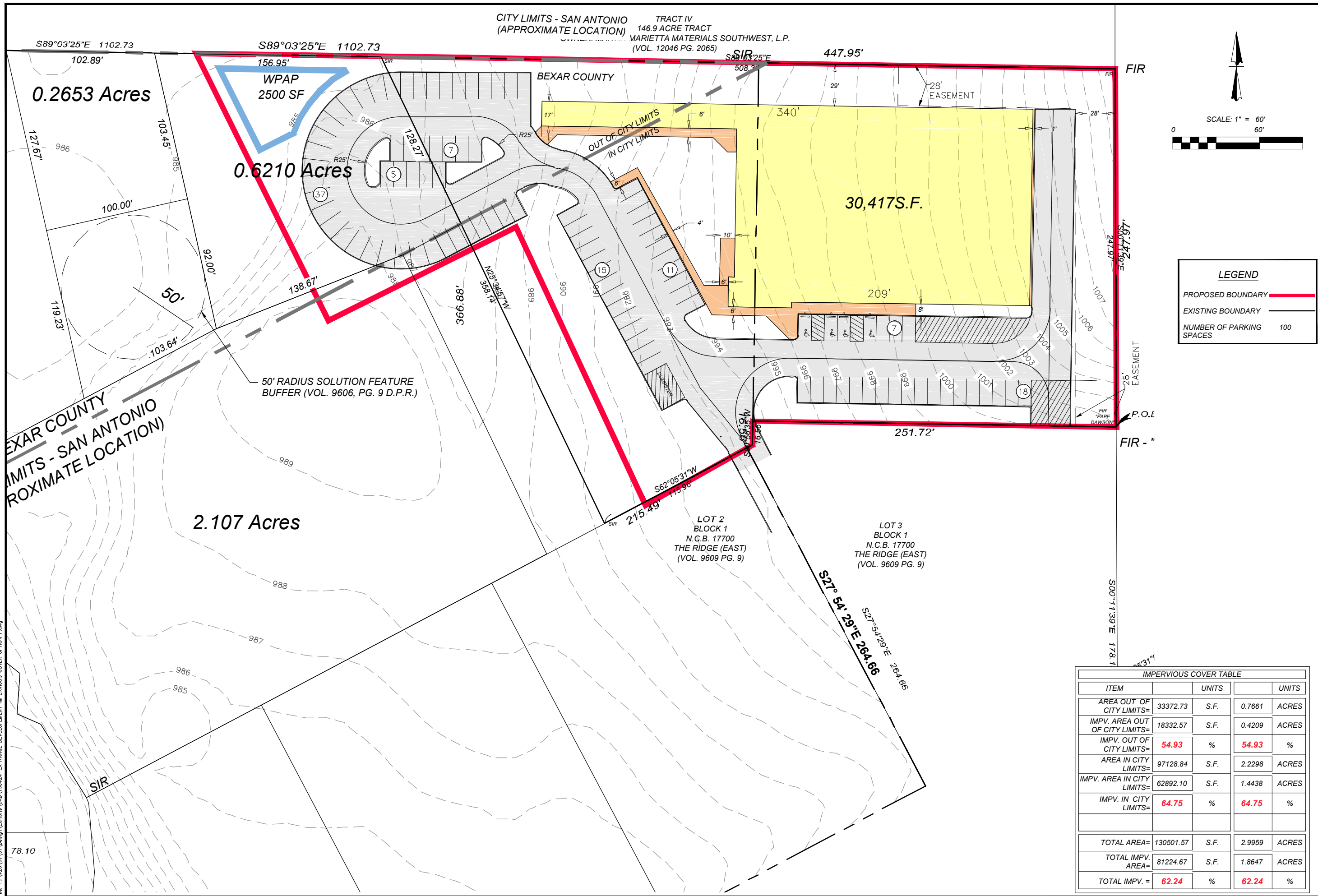
ISSUE DATE
 REVISIONS

RANGE DEVELOPMENT
 SAN ANTONIO, TEXAS
 SITE LAYOUT OPTION F



LEGEND

PROPOSED BOUNDARY	
EXISTING BOUNDARY	
NUMBER OF PARKING SPACES	100



IMPERVIOUS COVER TABLE

ITEM	UNITS	UNITS	UNITS
AREA OUT OF CITY LIMITS=	33372.73	S.F.	0.7661 ACRES
IMPV. AREA OUT OF CITY LIMITS=	18332.57	S.F.	0.4209 ACRES
IMPV. OUT OF CITY LIMITS=	54.93	%	54.93 %
AREA IN CITY LIMITS=	97128.84	S.F.	2.2298 ACRES
IMPV. AREA IN CITY LIMITS=	62892.10	S.F.	1.4438 ACRES
IMPV. IN CITY LIMITS=	64.75	%	64.75 %
TOTAL AREA=	130501.57	S.F.	2.9959 ACRES
TOTAL IMPV. AREA=	81224.67	S.F.	1.8647 ACRES
TOTAL IMPV. =	62.24	%	62.24 %

Date: Apr 24, 2015, 2:03pm, User: ID: keshavali
 File: P:\420\01\01\Design\Exhibits\150424-EX RANGE DEVELOPMENT IMPERVIOUS COVER OPTION F.dwg

JOB NO. 420-01-01
 DATE: FEBRUARY 2015
 DRAWN: KS CHECKED: BT
 SHEET NUMBER:
 EX-1