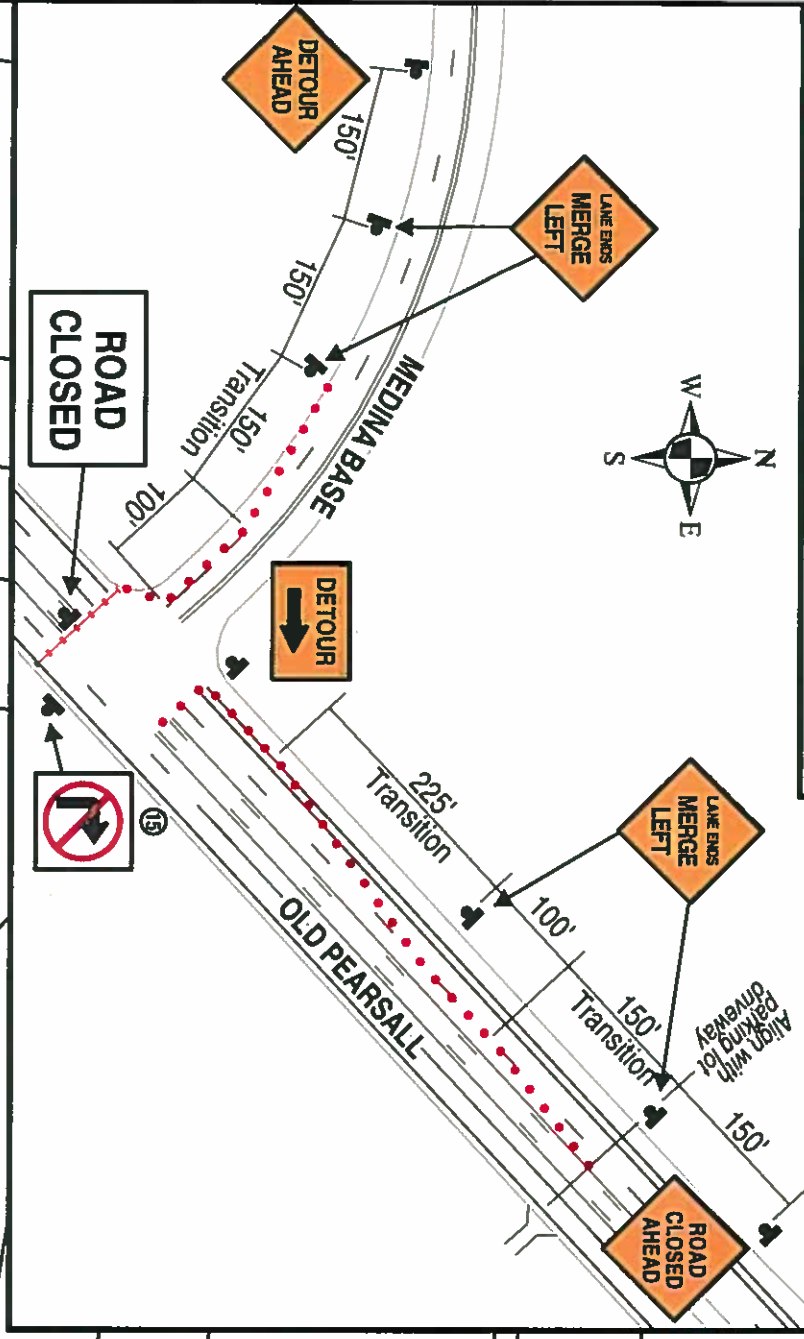
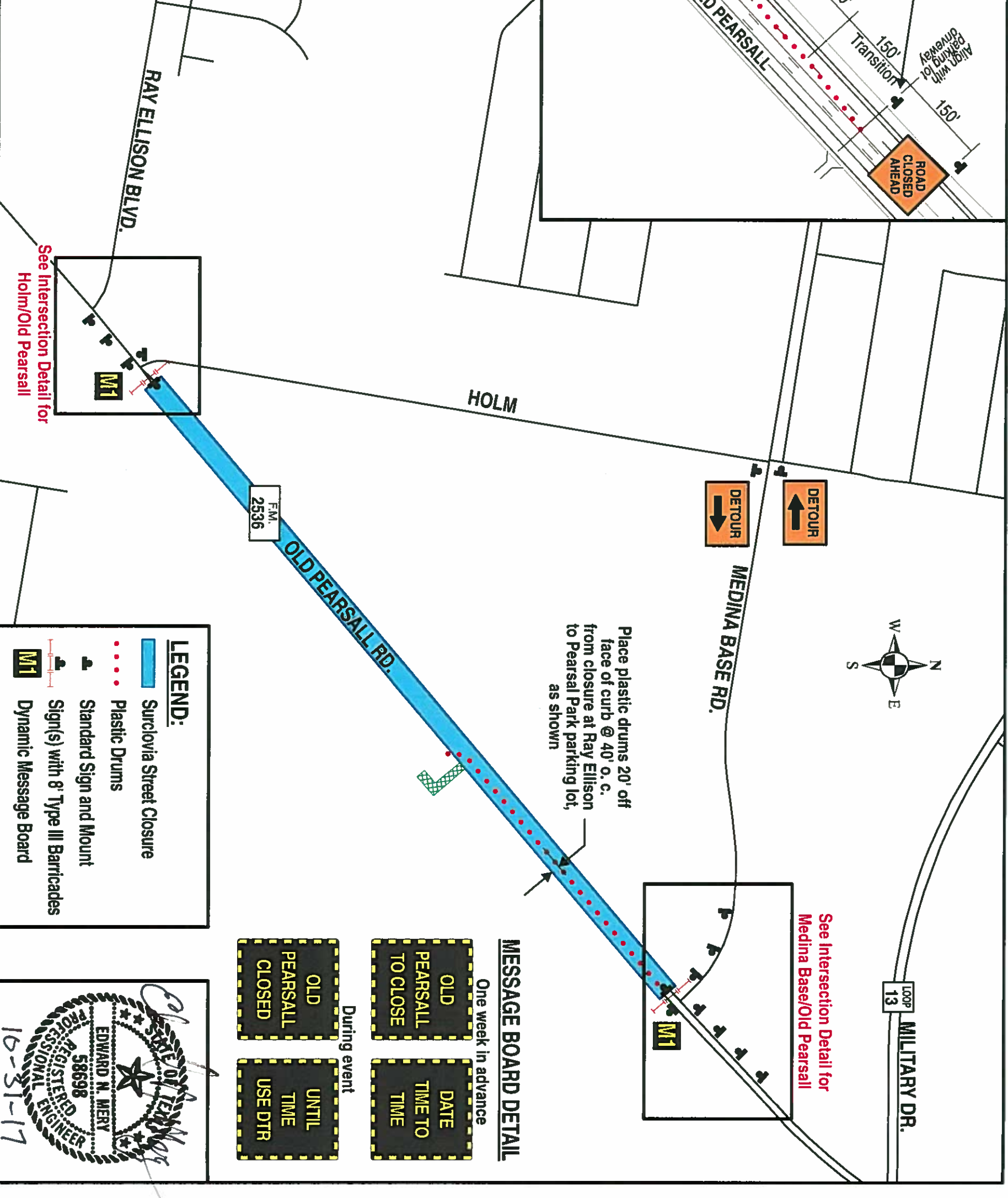
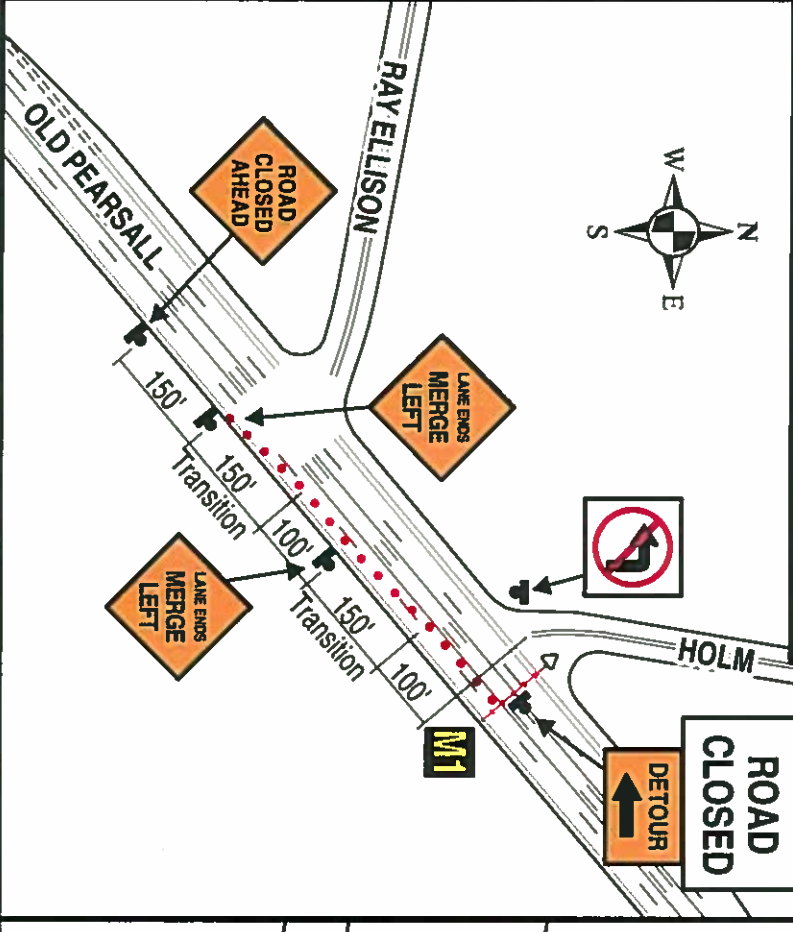


# SURCLOVIA ON OLD PEARSALL ROAD, NOVEMBER 19, 2017 - TRAFFIC CONTROL PLAN

Intersection Detail - Medina Base/Old Pearsall



Intersection Detail - Holm/Old Pearsall



See Intersection Detail for Holm/Old Pearsall

See Intersection Detail for Medina Base/Old Pearsall

Place plastic drums 20' off face of curb @ 40' o.c. from closure at Ray Ellison to Pearsall Park parking lot, as shown

**LEGEND:**

- Surclovia Street Closure
- Plastic Drums
- Standard Sign and Mount
- Sign(s) with 8' Type III Barricades
- Dynamic Message Board

**MESSAGE BOARD DETAIL**

