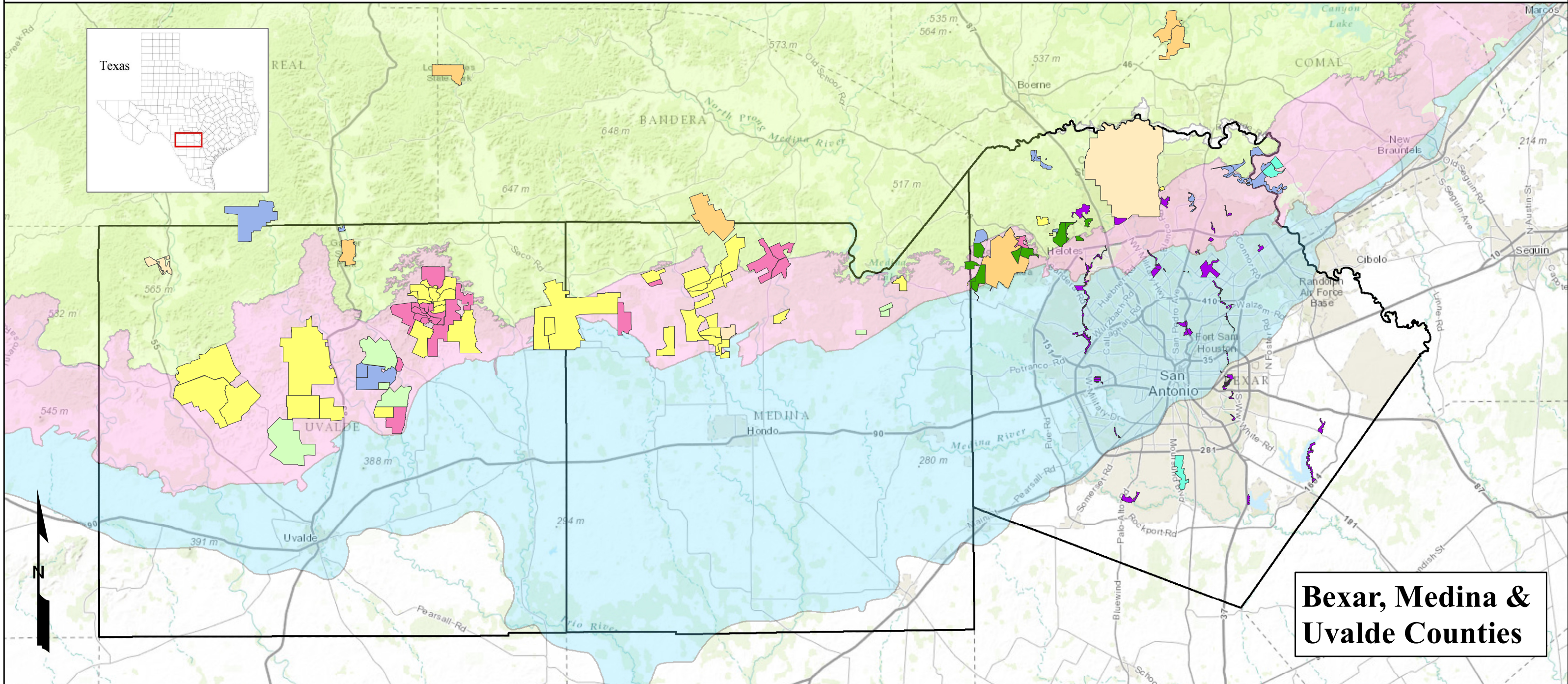
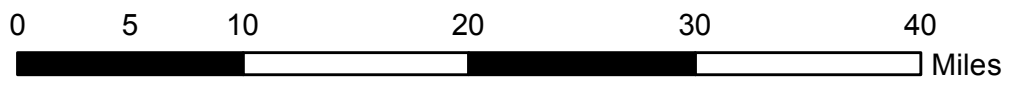


City of San Antonio Edwards Aquifer Protection Program



Bexar, Medina & Uvalde Counties

- | | | | |
|---------------------------------|--------------------------|--------------------------|-------------------------------|
| Proposition 3 (2000) Properties | Federal Managed Land | Texas Parks and Wildlife | Edwards Aquifer Recharge Zone |
| Proposition 1 (2005) Properties | City Parks | The Nature Conservancy | Edwards Aquifer Drainage Zone |
| Proposition 1 (2010) Properties | San Antonio Water System | Private Natural Areas | Edwards Aquifer Artesian Zone |



THE CITY OF SAN ANTONIO MAKES NO WARRANTY, REPRESENTATION, OR GUARANTEE OF ANY KIND REGARDING THIS MAP OR INFORMATION PROVIDED HEREIN.

The City of San Antonio assumes no liability either for any errors, omissions, or inaccuracies in the information provided regardless of the cause of such or for any decision made, action taken, or action not taken by the user in reliance upon any maps or information provided.