

RESOLUTION NO. 14-08-11

RECOMMENDING APPROVAL OF AN AGREEMENT FOR A MUNICIPAL BOUNDARY ADJUSTMENT BETWEEN THE CITY OF SAN ANTONIO AND THE CITY OF SHAVANO PARK FOR AN EXCHANGE OF TERRITORY, WITH THE CITY OF SAN ANTONIO RECEIVING APPROXIMATELY 31.81 ACRES OF LAND FROM THE CITY OF SHAVANO PARK AND THE CITY OF SHAVANO PARK RECEIVING TWO TRACTS OF LAND, CONSISTING OF APPROXIMATELY 1.88 ACRES AND APPROXIMATELY 4.36 ACRES FOR A TOTAL OF APPROXIMATELY 6.24 ACRES FROM THE CITY OF SAN ANTONIO, WITH CONDITIONS.

WHEREAS, the City of Shavano Park has requested a municipal boundary adjustment ceding approximately 31.81 acres to the City of San Antonio and the City of San Antonio ceding approximately 6.24 acres to the City of Shavano Park; and,

WHEREAS, the subject area is generally located to the south of North Loop 1604, to the north of Huebner Road, and to the west of Salado Creek; and

WHEREAS, the City of Shavano Park has requested to add two (2) separate tracts of land, Tract 1 consisting of approximately 1.88 acres and Tract 2 consisting of approximately 4.36 acres for a total of approximately 6.24 acres, to its municipal boundary from the City of San Antonio. In exchange, the City of Shavano Park has agreed to release one (1) tract of land, approximately 31.81 acres, to the City of San Antonio; and,

WHEREAS, the Texas Local Government Code provides authority for adjacent municipalities to make mutually agreeable changes in their boundaries of areas that are less than 1,000 feet in width; and,

WHEREAS, the transfer of territory to the City of San Antonio does not conflict with the City of San Antonio's Annexation Policy, adopted on February 14, 2013; and,

WHEREAS, these municipal boundary adjustments will result in the clarification of service delivery between the two municipalities; and

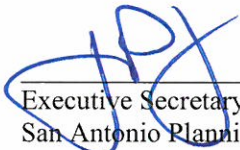
WHEREAS, the City of Shavano Park will contribute a total of \$15,000 to the City of San Antonio to be paid annually over the next four years. An annual payment of \$3,750 will be made on October 1st of each year beginning on October 1, 2014 and ending on October 1, 2017

NOW, THEREFORE, BE IT RESOLVED BY THE PLANNING COMMISSION OF THE CITY OF SAN ANTONIO

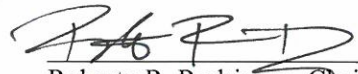
SECTION 1: The Planning Commission recommends approval of an agreement for a Municipal Boundary Adjustment between the City of San Antonio and the City of Shavano park for an exchange of territory with the City of San Antonio receiving approximately 31.81 acres of land from the City of Shavano Park and the City of Shavano Park receiving two tracts of land consisting of approximately 1.88 and 4.36 acres for a total of approximately 6.24 acres from the City of San Antonio, with conditions, as particularly described in Attachment I and II , to the City Council for adoption.

PASSED AND APPROVED ON THIS 13th DAY OF AUGUST 2014.

Attest:



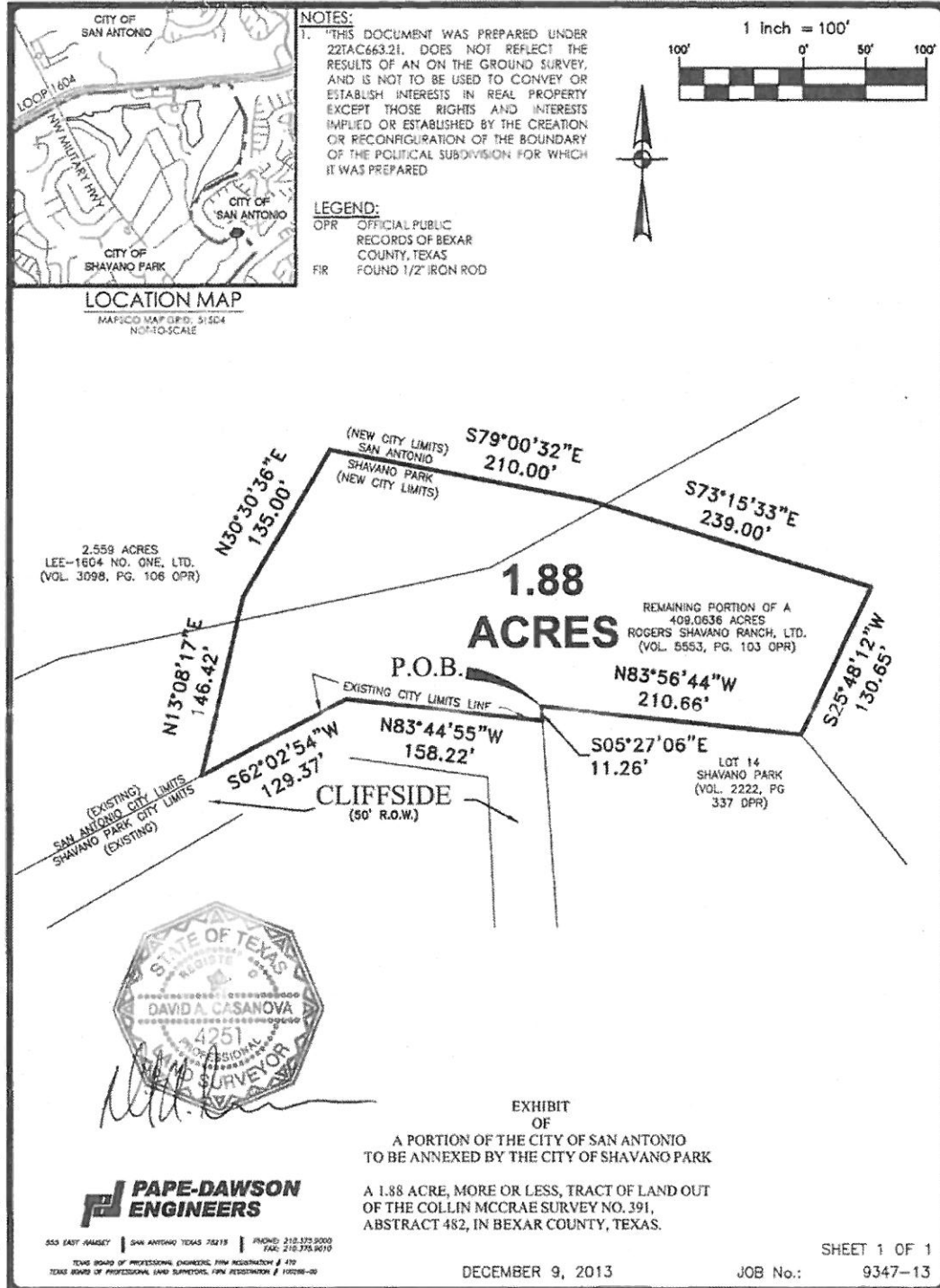
Executive Secretary
San Antonio Planning Commission



Roberto R. Rodriguez, Chair
San Antonio Planning Commission

Attachment I:

Tract 1





LAND DEVELOPMENT ENVIRONMENTAL TRANSPORTATION WATER RESOURCES SURVEYING

METES AND BOUNDS DESCRIPTION
FOR

A portion of the City of San Antonio to be Annexed by the City of Shavano Park

A 1.88 acre, more or less, tract of land out of a 409.0636 acre tract recorded in Volume 5553, Page 103 of the Official Public Records of Bexar County, Texas and out of a 2.559 acre tract recorded in Volume 3098, Page 106 of the Official Public Records of Bexar County, Texas, out of the Collin McCrae Survey No. 391, Abstract 482, in Bexar County, Texas. Said 1.88 acre tract being more fully described as follows:

- BEGINNING: At a northwest corner of Lot 14 of Shavano Park Subdivision recorded in Volume 2222, Page 337 of the Deed and Plat Records of Bexar County, Texas, also being on the existing city limits line between the City of San Antonio and the city of Shavano Park;
- THENCE: S 05°27'06" E, along and with the west line of said Lot 14 and the existing City Limits line between San Antonio and Shavano Park, a distance of 11.26 feet to a corner of Cliffside, a 50-foot right-of-way dedicated on said Shavano Park;
- THENCE: N 83°44'55" W, along and with the north right-of-way line of said Cliffside and the existing City Limits line, a distance of 158.22 feet to an angle point;
- THENCE: S 62°02'54" W, continuing along and with the north right-of-way line of said Cliffside and the existing City Limits line, a distance of 129.37 feet to a point;
- THENCE: Departing the northerly line of said Cliffside and the existing City Limits line, over and across said 409.0636 acre tract and said 2.559 acre tract within the existing City Limits of San Antonio the following bearings and distances:
- N 13°08'17" E, a distance of 146.42 feet to a point;
 - N 30°30'36" E, a distance of 135.00 feet to a point;
 - S 79°00'32" E, a distance of 210.00 feet to a point;
 - S 73°15'33" E, a distance of 239.00 feet to a point;
 - S 25°48'12" W, a distance of 130.65 feet to the northeast corner of said Lot 14;

1.88 Acre
Job No. 9347-13
Page 2 of 2

THENCE: S 83°56'44" W, along and with the north line of said Lot 14 and the existing City Limits line, a distance of 210.66 feet to the POINT OF BEGINNING, and containing 1.88 acres in Bexar County, Texas.

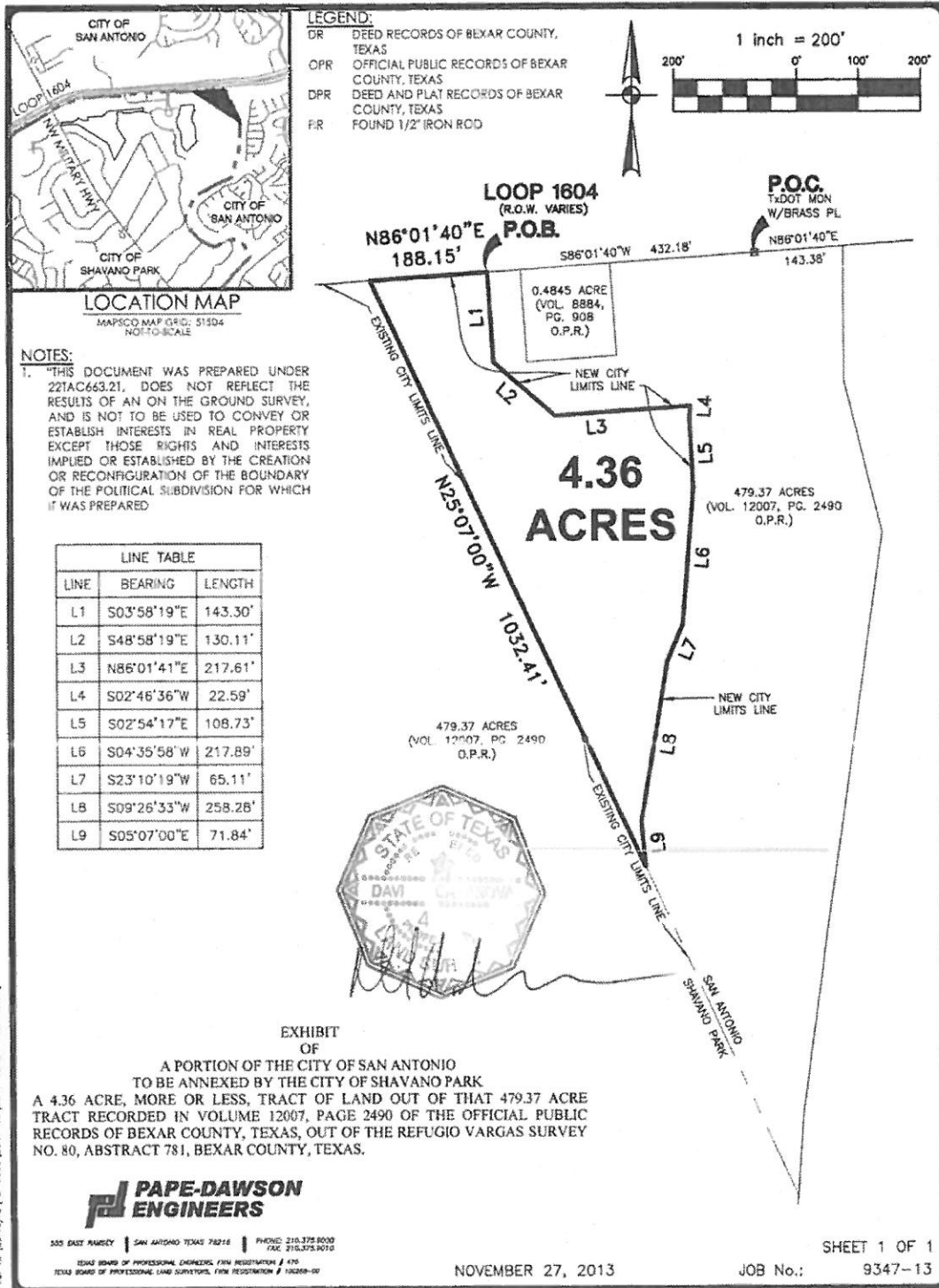
"This document was prepared under 22TAC663.21, does not reflect the results of an on the ground survey, and is not to be used to convey or establish interests in real property except those rights and interests implied or established by the creation or reconfiguration of the boundary of the political subdivision for which it was prepared."

PREPARED BY: Pape-Dawson Engineers, Inc.
DATE: December 9, 2013
JOB NO. 9347-13
DOC. ID. N:\Survey\13\13-9300\9347-13\Word\9347-13 FN-1.71 AC.docx
TBPE Firm Registration #470
TBPLS Firm Registration #100288-00



A handwritten signature in black ink, appearing to read "David A. Casanova", written over the bottom portion of the professional seal.

Tract 2



Date: Nov 27, 2013, 2:18pm User: D:\M\p\m
 File: N:\Survey\13\13-9300\9347-13\9347-13 Ex-4.36 AC.dwg



LAND DEVELOPMENT ENVIRONMENTAL TRANSPORTATION WATER RESOURCES SURVEYING

METES AND BOUNDS DESCRIPTION
FOR

A portion of the City of San Antonio to be Annexed by the City of Shavano Park

Being 4.36 acres, more or less, out of the 521 acres annexed by the City of San Antonio by Ordinance No. 7904. Said 4.36 acres also being out of that 479.37 acre tract recorded in Volume 12007, Page 2490 of the Official Public Records of Bexar County, Texas, out of the Refugio Vargas Survey No. 80, Abstract 781, Bexar County, Texas. Said 4.36 acres being more fully described as follows, with bearings based on the Texas State Plane Coordinate System, South Central Zone, North American Datum of 1983, (CORS 96):

COMMENCING: At a found TxDOT Monument with Brass Plate on the south right-of-way line of Charles Anderson Loop 1604 (Loop 1604), a variable width right-of-way, on the north line of said 479.37 acre tract, from which the northeast corner of said 479.37 acre tract bears N 86°01'40" E, 143.38 feet;

THENCE: S 86°01'40" W, along and with the south right-of-way line of said Loop 1604, the north line of said 479.37 acre tract, a distance of 432.18 feet to the POINT OF BEGINNING;

THENCE: Departing the south right-of-way line of said Loop 1604, over and across said 479.37 acre tract, along and with the new City Limits line between the City of San Antonio and the City of Shavano Park, the following bearings and distances:

S 03°58'19" E, a distance of 143.30 feet to a point;

S 48°58'19" E, a distance of 130.11 feet to a point;

N 86°01'41" E, a distance of 217.61 feet to a point;

S 02°46'36" W, a distance of 22.59 feet to a point;

S 02°54'17" E, a distance of 108.73 feet to a point;

S 04°35'58" W, a distance of 217.89 feet to a point;

S 23°10'19" W, a distance of 65.11 feet to a point;

S 09°26'33" W, a distance of 258.28 feet to a point;

4.36 Acres
Job No. 9347-13
Page 2 of 2

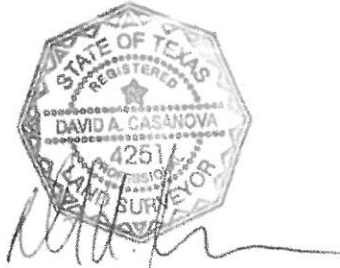
S 05°07'00" E, a distance of 71.84 feet to a point on the existing City Limits line of the City of Shavano Park and the City of San Antonio;

THENCE: N 25°07'00" W, along and with the existing City Limits line, continuing over and across said 479.37 acre tract, a distance of 1032.41 feet to a point on the south right-of-way line of said Loop 1604;

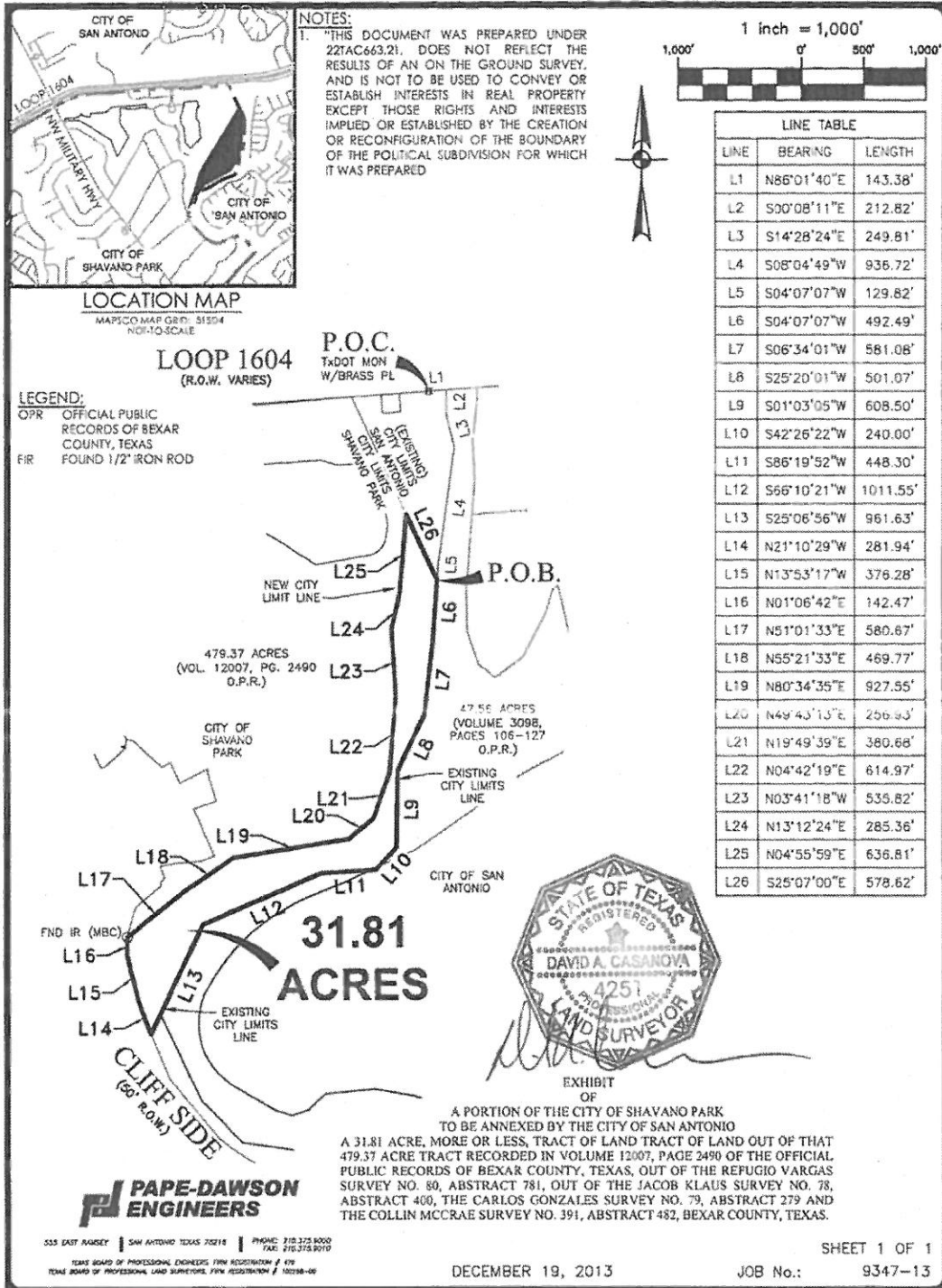
THENCE: N 86°01'40" E, along the new City Limits line between the City of San Antonio and the City of Shavano Park, the south right-of-way line of said Loop 1604, a distance of 471.56 feet to the POINT OF BEGINNING.

"This document was prepared under 22TAC663.21, does not reflect the results of an on the ground survey, and is not to be used to convey or establish interests in real property except those rights and interests implied or established by the creation or reconfiguration of the boundary of the political subdivision for which it was prepared."

PREPARED BY: Pape-Dawson Engineers, Inc.
DATE: November 27, 2013
JOB NO. 9347-13
DOC. ID. N:\Survey\13\13-9300\9347-13\Word\9347-13 FN-4.363 AC.docx
TBPE Firm Registration #470
TBPLS Firm Registration #100288-00



Tract 3





LAND DEVELOPMENT ENVIRONMENTAL TRANSPORTATION WATER RESOURCES SURVEYING

FIELD NOTES
FOR

A portion of the City of Shavano Park to be Annexed by the City of San Antonio

A 31.81 acre, more or less, tract of land out of that 479.37 acre tract recorded in Volume 12007, Page 2490 of the Official Public Records of Bexar County, Texas, out of the Refugio Vargas Survey No. 80, Abstract 781, out of the Jacob Klaus Survey No. 78, Abstract 400, the Carlos Gonzales Survey No. 79, Abstract 279 and the Collin McCrae Survey No. 391, Abstract 482, in Bexar County, Texas. Said 31.81 acre tract being more fully described as follows, with bearings based on the Texas State Plane Coordinate System, South Central Zone, North American Datum of 1983, (CORS 96):

COMMENCING: At a found TxDOT Monument with Brass Plate on the south right-of-way line of Charles Anderson Loop 1604 (Loop 1604), a variable width right-of-way, on the north line of said 479.37 acre tract;

THENCE: N 86°01'40" E, along and with the south right-of-way line of said Loop 1604, the north line of said 479.37 acre tract, a distance of 143.38 feet to the northeast corner of said 479.37 acre tract, the northwest corner of a 47.56 acre tract recorded in Volume 3098, Page 106 of the Official Public Records of Bexar County, Texas;

THENCE: Departing the south right-of-way line of said Loop 1604, along and with the east line of said 479.37 acre tract, the west line of said 47.56 acre tract the following bearings and distances:

S 00°08'11" E, a distance of 212.82 feet to a point;

S 14°28'24" E, a distance of 249.81 feet to a point;

S 08°04'49" W, a distance of 936.72 feet to a point;

S 04°07'07" W, a distance of 129.82 feet to a point on the existing City Limits Line between the City of San Antonio and the City of Shavano Park for the POINT OF BEGINNING;

THENCE: Continuing along and with the east line of said 479.37 acre tract, and said existing City Limits Line the following bearings and distances:

S 04°07'07" W, a distance of 492.49 feet to a point;

S 06°34'01" W, a distance of 581.08 feet to a point;

S 25°20'01" W, a distance of 501.07 feet to a point;

S 01°03'05" W, a distance of 608.50 feet to a point;

S 42°26'22" W, a distance of 240.00 feet to a point;

S 86°19'52" W, a distance of 448.30 feet to a point;

S 66°10'21" W, a distance of 1011.55 feet to a point;

S 25°06'56" W, a distance of 961.63 feet to a point on the east right-of-way line of Cliff Side Drive, a 50-foot right-of-way, dedicated on Shavano Park, recorded in Volume 2222, Page 337 of the Deed Records of Bexar County, Texas;

THENCE: Departing said existing City limits line, along the new City Limits line between the City of San Antonio and the City of Shavano Park, along and with the east right-of-way line of said Cliff Side Drive, the southwest line of said 479.37 acre tract the following bearings and distances:

N 21°10'29" W, a distance of 281.94 feet to a point;

N 13°53'17" W, a distance of 376.28 feet to a point;

N 01°06'42" E, a distance of 142.47 feet to a found iron rod with cap stamped "MBC" for a corner of said 479.37 acre tract;

THENCE: Departing the east right-of-way line of said Cliff Side Drive, continuing along the new City Limits line between the City of San Antonio and the City of Shavano park, over and across said 479.37 acre tract the following bearings and distances:

N 51°01'33" E, a distance of 580.67 feet to a point;

N 55°21'33" E, a distance of 469.77 feet to a point;

N 80°34'35" E, a distance of 927.55 feet to a point;

N 49°43'13" E, a distance of 256.93 feet to a point;

31.81 Acres
Job No. 9347-13
Page 3 of 3

N 19°49'39" E, a distance of 380.68 feet to a point;

N 04°42'19" E, a distance of 614.97 feet to a point;

N 03°41'18" W, a distance of 535.82 feet to a point;

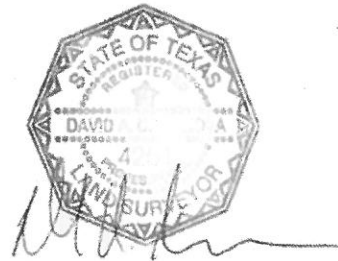
N 13°12'24" E, a distance of 285.36 feet to a point;

N 04°55'59" E, a distance of 636.81 feet to a point on the existing City Limits Line between said San Antonio and Shavano Park;

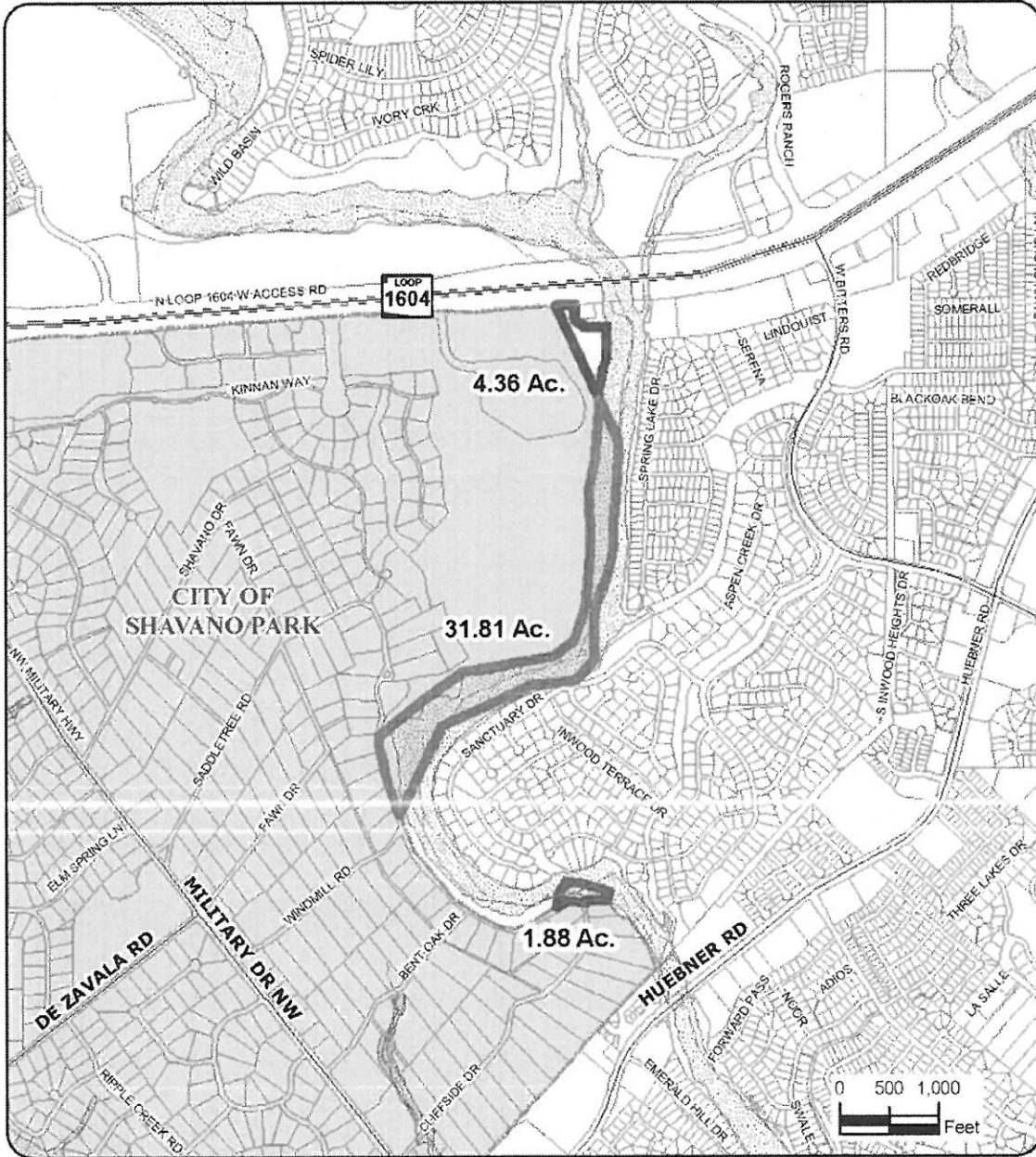
THENCE: S 25°07'00" E, along and with the existing City Limits Line, over and across said 479.37 acre tract, a distance of 578.62 feet to the POINT OF BEGINNING, and containing 31.81 acres in Bexar County, Texas.

"This document was prepared under 22TAC663.21, does not reflect the results of an on the ground survey, and is not to be used to convey or establish interests in real property except those rights and interests implied or established by the creation or reconfiguration of the boundary of the political subdivision for which it was prepared."

PREPARED BY: Pape-Dawson Engineers, Inc.
DATE: November 13, 2013
JOB NO. 9347-13
DOC. ID. N:\Survey13\13-9300\9347-13\Word\9347-13 FN-31.81 AC.docx
TBPE Firm Registration #470
TBPLS Firm Registration #100288-00



Attachment II:



	Release to City of Shavano Park	City of San Antonio	Expressways
	Release to City of San Antonio	Cities and Towns	Creeks

City of San Antonio
City of Shavano Park Municipal Boundary Adjustment

City of San Antonio
Office of Development and
Planning
100 N. Nueces Street
San Antonio, TX 78202
210.207.2000