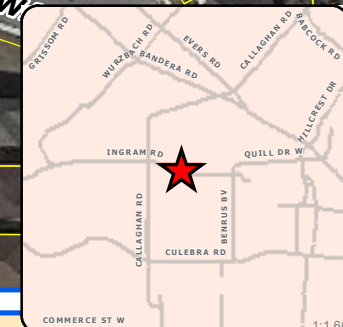




Board of Adjustment **Notification Plan for** **Case No A-18-068**

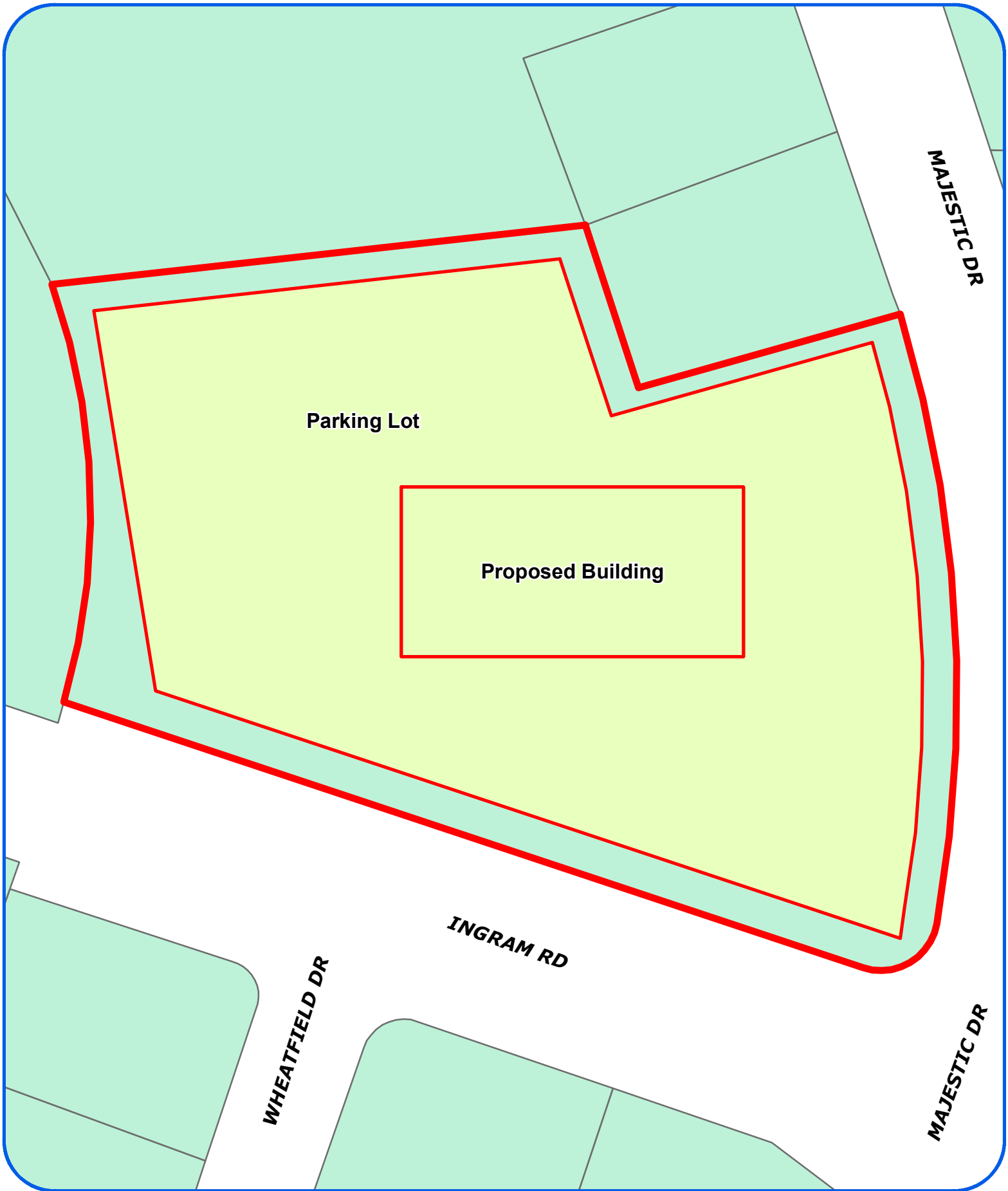


- San Antonio City Limits
- Subject Property
- 200' Notification Boundary
- Council District: 7

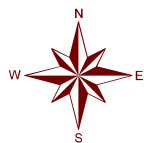


"NOT TO SCALE,
 FOR ILLUSTRATIVE PURPOSES ONLY"

Development Services Department
 City of San Antonio



Board of Adjustment
Plot Plan for
Case No A-18-068



"NOT TO SCALE,
FOR ILLUSTRATIVE PURPOSES ONLY"
Council District: 7

5511 Ingram Rd

Development Services Department
City of San Antonio

LEGEND

PROPERTY BOUNDARY LINE

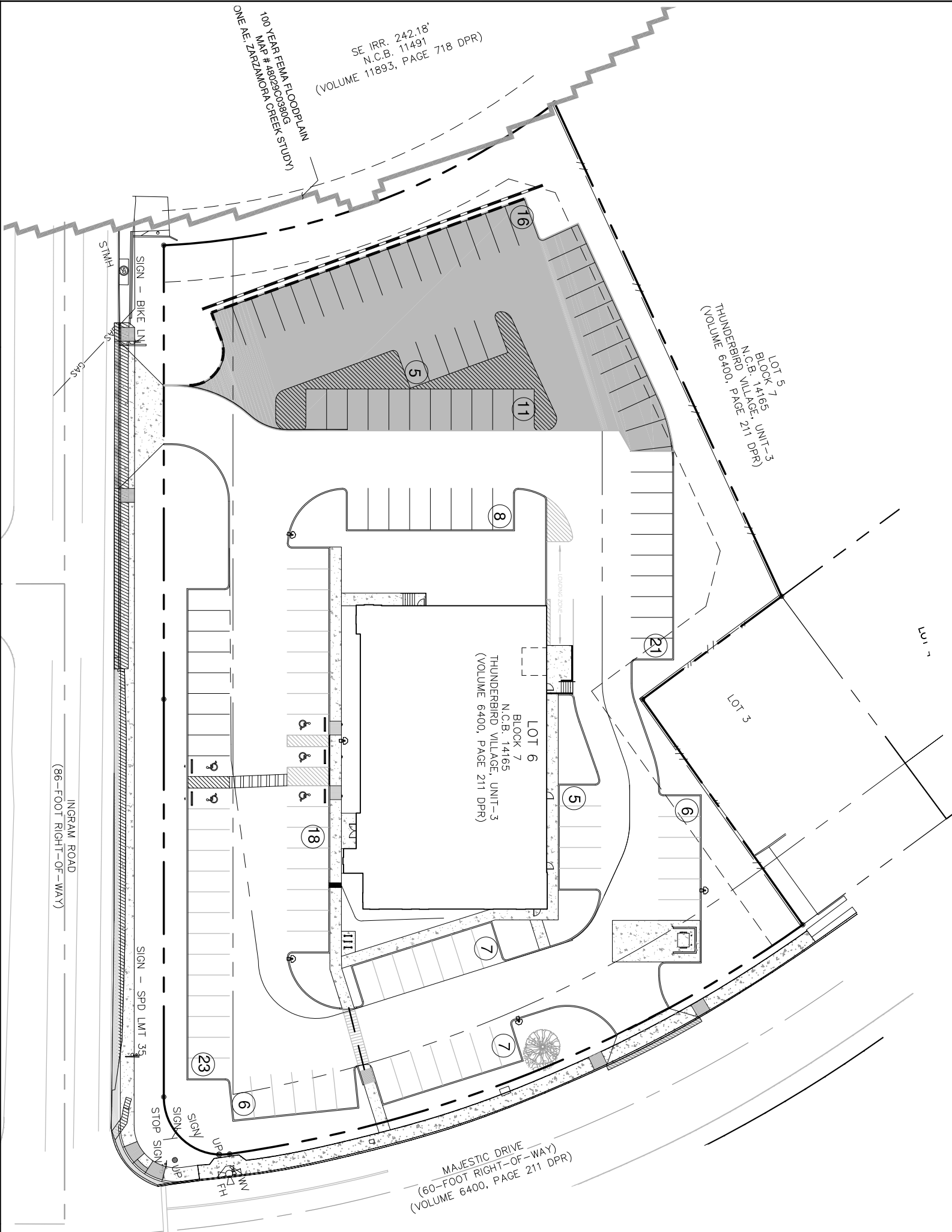
1 PARKING COUNT

PROPOSED PARKING
(0.32 ACRES OR 14,130 SQFT)

PARKING SUMMARY TABLE

BUILDING 1 USE	TRAINING CENTER BLDG
BUILDING SQUARE FOOTAGE	10,711 SQFT
PERMITTED USE:	
SIMILIAR TO SERVICE, SCHOOL - TRADE	
MIN = 1 TO 200 GFA	
MAX = 1 TO 150 GFA	

STADARD PARKING STALLS (9'x18')	
EXISTING STANDARD PARKING STALLS TO REMAIN	64
PROPOSED STANDARD PARKING STALLS	64
TOTAL STANDARD PARKING STALLS	128
HANDI-CAPPED PARKING (ADA)	
EXISTING STANDARD HANDI-CAPPED PARKING STALLS	2
EXISTING "V" HANDI-CAPPED PARKING STALLS	1
PROPOSED STANDARD HANDI-CAPPED PARKING STALLS	2
TOTAL HANDI-CAPPED PARKING STALLS	5
TOTAL PARKING SPACES	133



MODECO, LLC

ENGINEERING & CONSTRUCTION SOLUTIONS
10116 STAGECOACH BAY
SAN ANTONIO, TEXAS 78254
PHONE: 210-683-7204
TPE, FIRM REGISTRATION # 14593

IEC TRAINING CENTER - PARKING LOT EXPANSION

5511 INGRAM ROAD, SAN ANTONIO, TEXAS 78228
PRELIMINARY SITE PLAN

SHEET:

EX 1

JOB NO. 18-003
DATE MARCH 2018
DESIGNER JML
CHECKED JML
DRAWN JML

A-18-068
Subject Property – 5511 Ingram Road



Side Property View, East



Streetscape, East



Streetscape West Towards Drainage



Side Property View, West

