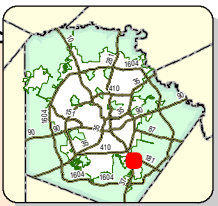
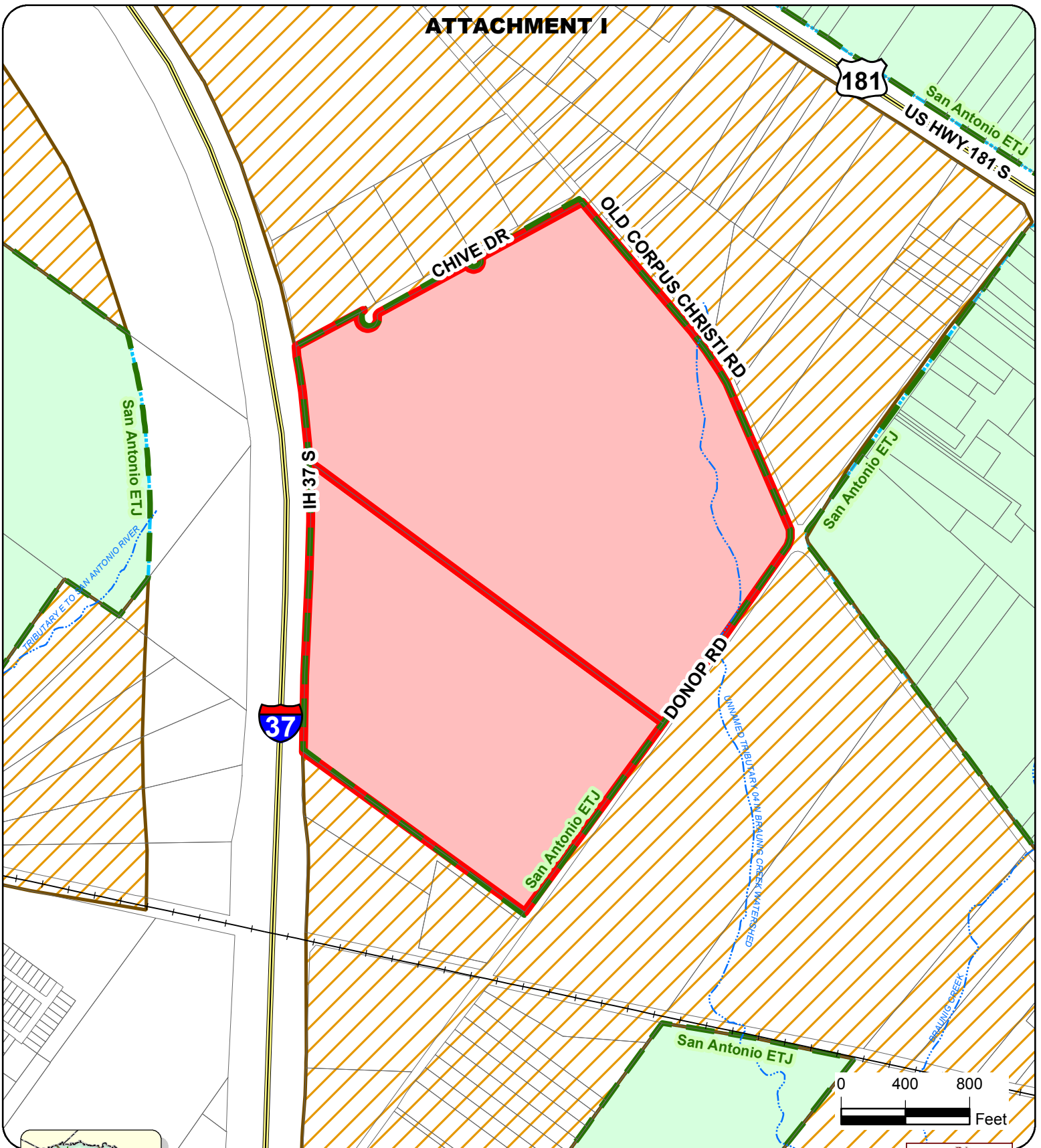

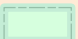
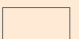

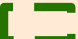




# ATTACHMENT I




-  Nabors Property
-  Bexar County
-  BCAD Parcels
-  City of San Antonio
-  Extraterritorial Jurisdiction Line
-  Limited Purpose Annexations
-  Expressways



## City of San Antonio Voluntary Annexation of the Nabors Property

**City of San Antonio**  
Information Technology Services Department  
GIS Public Services Division  
Riverview Towers  
111 Soledad St. 9th Floor  
San Antonio, TX 78205



Data Source: City of San Antonio Enterprise GIS, Bexar Metro 911, Bexar Appraisal District  
This Geographic Information System Product, received from The City of San Antonio is provided "as is" without warranty of any kind, and the City of San Antonio expressly disclaims all express and implied warranties, including but not limited to the implied warranties of merchantability and fitness for a particular purpose. The City of San Antonio does not warrant, guarantee, or make any representations regarding the use, or the results of the use, of the information provided to you by the City of San Antonio in terms of completeness, accuracy, reliability, timeliness or otherwise. The entire risk as to the results and performance of any information obtained from the City of San Antonio is solely assumed by the recipient.  
\*Please contact the responsible City of San Antonio Department for specific determinations.  
Map Last Edited: 4/8/2016  
PDF Filename: 16046563.pdf  
Map file location: W:\CoSAD\apps\and\offices\_FY2015\_2016\PlanningAndCommunityDevelopment\VoluntaryAnnexation\Nabors Property.mxd