

Extraterritorial Jurisdiction (ETJ) Release from the City of San Antonio to the City of Converse, totaling approximately 900 acres

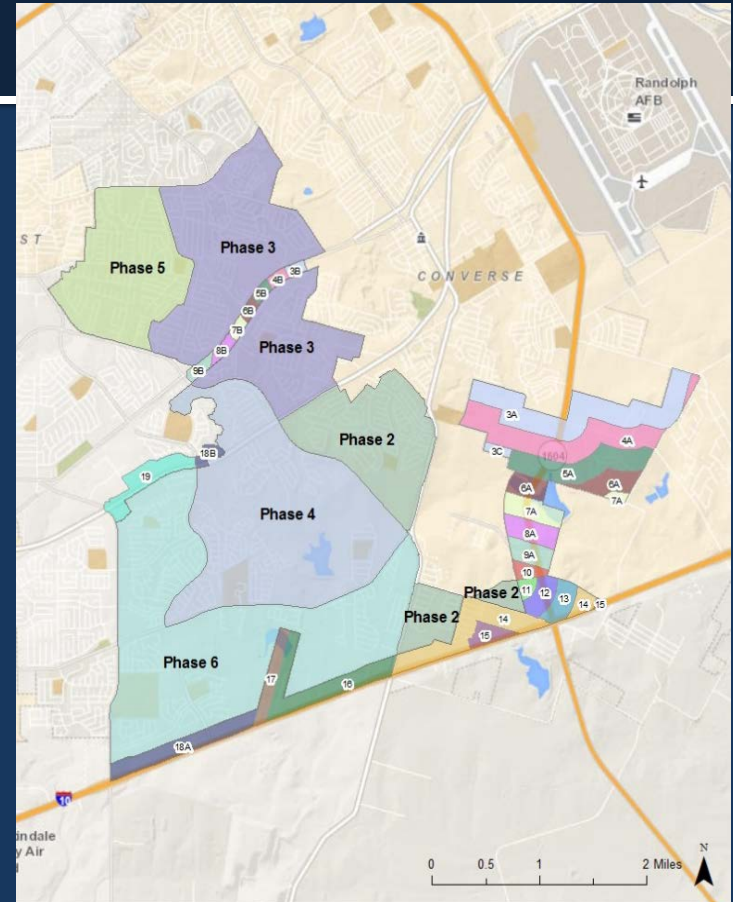
City Council A Session
Agenda Item #35
January 30, 2020

Bridgett White, AICP
Director, Planning Department



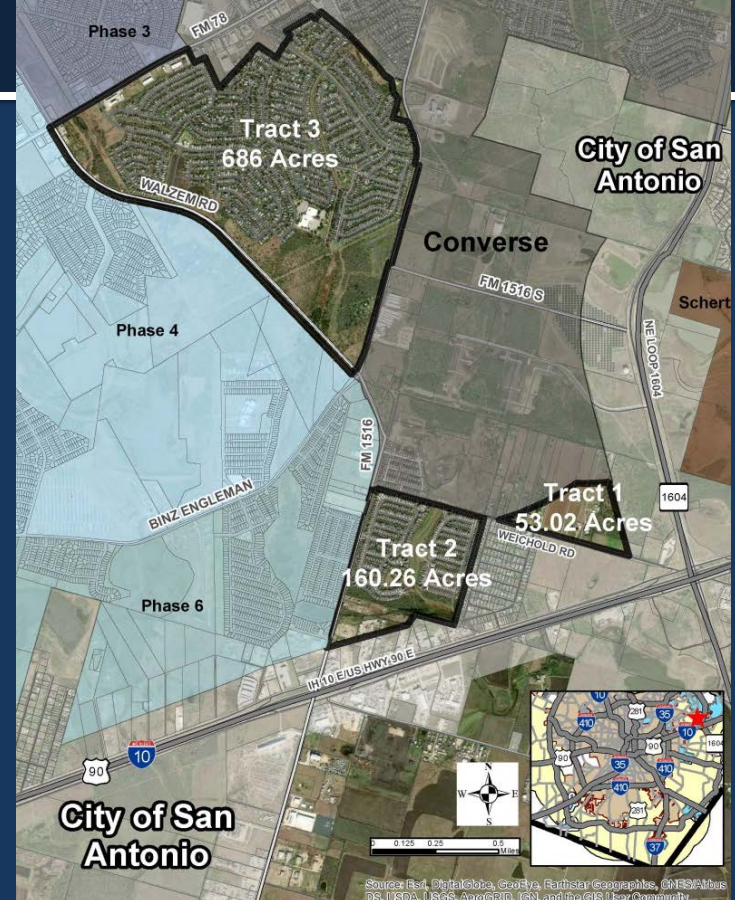
Interlocal Agreement

- Approved March 2017
 - San Antonio released Phase 1 (600 acres – located between FM 1516 and NE Loop 1604) and Converse voluntary annexed
 - San Antonio released Municipal Boundary Adjustments 1 & 2
- Annexation State law changed and San Antonio and Converse renegotiated ILA terms and timeline
- Amended December 2019



Phase 2 ETJ Release

- 3 Tracts, generally located northwest of the intersection of NE Loop 1604 and IH 10 E
 - Tract 1 – 53.02 acres
 - Tract 2 – 160.26 acres
 - Tract 3 – 686.82 acres



Source: Esri, DigitalGlobe, GeoEye, Earthstar Geographics, CNES/Airbus DS, USDA, USGS, AeroGRID, IGN, and the GIS User Community

Recommendation

Staff recommends approval of the Ordinance authorizing an ETJ release of approximately 900 acres from the City of San Antonio to the City of Converse.

The City of Converse will then take action on this item at one of their future City Council meetings.

Extraterritorial Jurisdiction (ETJ) Release from the City of San Antonio to the City of Converse, totaling approximately 900 acres

City Council A Session
Agenda Item #35
January 30, 2020

Bridgett White, AICP
Director, Planning Department

