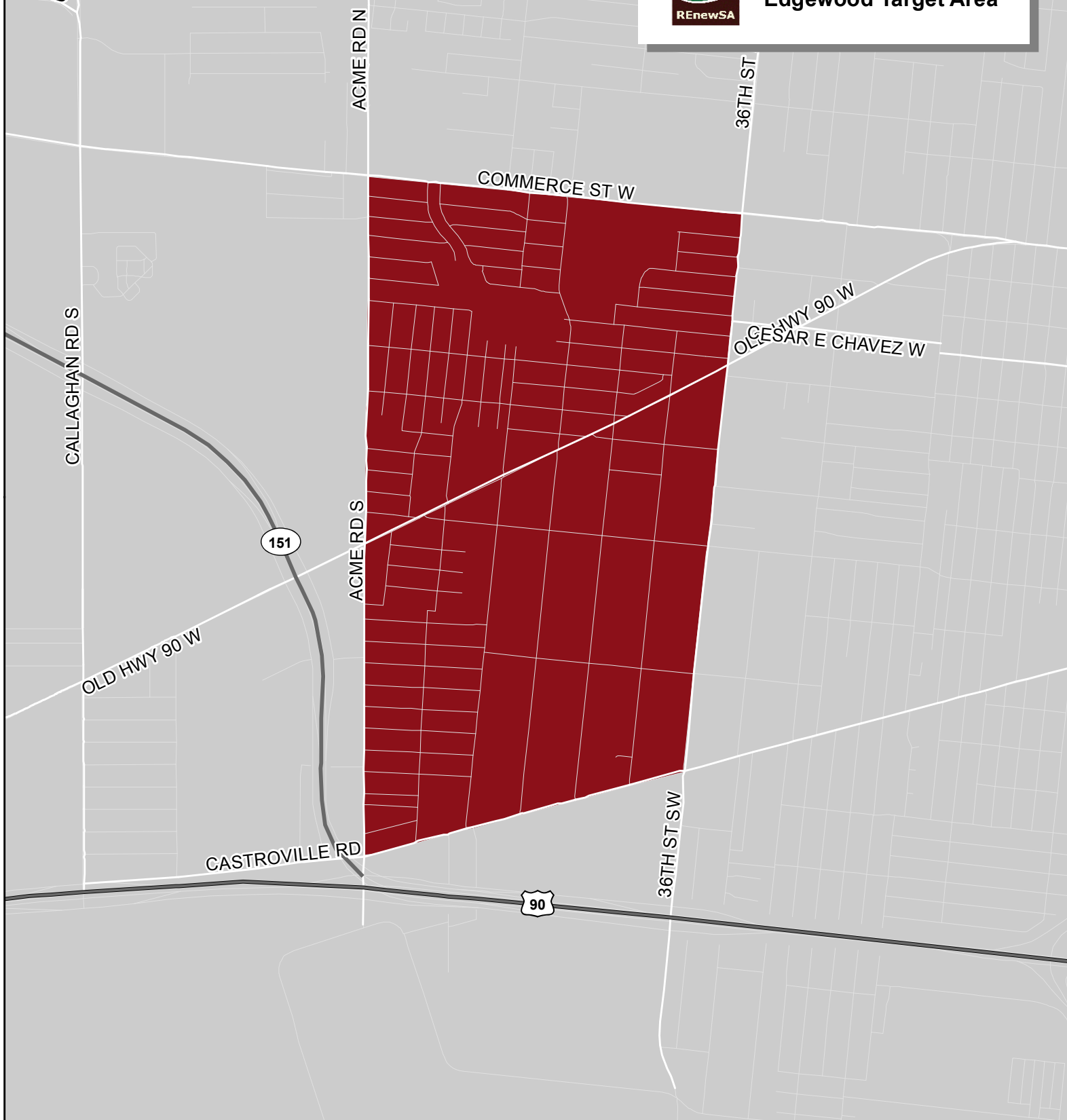


WATERBURY DR  
W CALLAGHAN RD



# REnewSA

## Edgewood Target Area



0 0.125 0.25 0.5  
Miles



Data Source: City of San Antonio Enterprise GIS, Bexar Metro 911, Bexar Appraisal District  
"This Geographic Information System Product received from the City of San Antonio is provided "as is" without warranty of any kind, and the City of San Antonio expressly disclaims all expressed and implied warranties, including but not limited to the implied warranties of merchantability and fitness for a particular purpose. The City of San Antonio does not warrant, guarantee, or make any representations regarding the use, or the results of the use, of the information provided to you by the City of San Antonio in terms of completeness, accuracy, reliability, timeliness or otherwise. The entire risk as to the results and performance of any information obtained from the City of San Antonio is entirely assumed by the recipient."  
\*Please contact the City of San Antonio Department for specific determinations.  
Map Created by: Michael Taylor, AICP  
Map Creation Date: July 12, 2013

**Note: Target Area boundaries are subject to change or modification.**



John Dugan, AICP  
Director  
City of San Antonio  
Planning & Community Development  
1400 S. Flores  
San Antonio, TX 78204

THEO AV W  
MALONE ST W

THEO AV E

PROBANDT ST

FLORES ST S

DIVISION AV

SOUTHCROSS W

SOUTHCROSS E

MISSION RD

SOUTHCROSS BVE

ROOSEVELT AV

MISSION RD

MISSION RD

MILITARY DR SW/LOOP 13

MILITARY DR SW

MILITARY DR SE

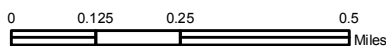
COMMERCIAL AV

PRESA ST S  
FAIR



**REnewSA**

**Harlandale  
Target Area**



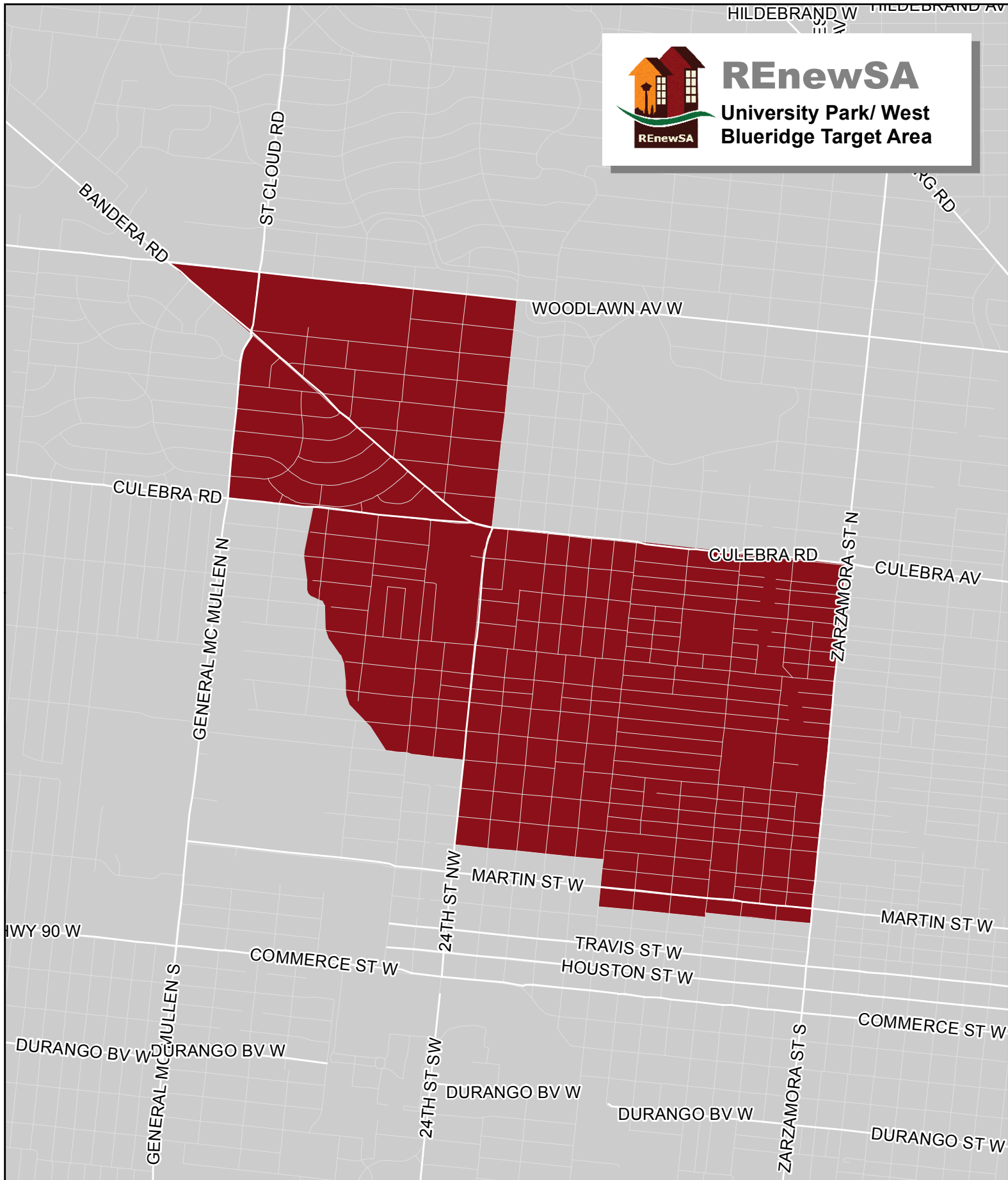
**Note: Target Area boundaries are  
subject to change or modification.**



John Dugan, AICP  
Director

City of San Antonio  
Planning & Community Development  
1400 S. Flores  
San Antonio, TX 78204

Data Source: City of San Antonio Enterprise GIS, Bexar Metro 911, Bexar Appraisal District  
\*This Geographic Information System Product received from the City of San Antonio is provided "as is" without warranty of any kind, and the City of San Antonio expressly disclaims all expressed and implied warranties, including but not limited to the implied warranties of merchantability and fitness for a particular purpose. The City of San Antonio does not warrant, guarantee, or make any representations regarding the use, or the results of the use, of the information provided to you by the City of San Antonio in terms of completeness, accuracy, reliability, timeliness or otherwise. The entire risk as to the results and performance of any information obtained from the City of San Antonio is entirely assumed by the recipient.  
\*Please contact the City of San Antonio Department for specific determinations.  
Map Created by: Michael Taylor, AICP  
Map Creation Date: July 12, 2013





# REnewSA

University Park/ West  
Blueridge Target Area

NEW BRAUNFELS AV N



**REnewSA**

**Wheatley  
Target Area**



AT&T CENTER PKWY  
GEORGETOWN BLVD

NEW BRAUNFELS AV N

HOUSTON ST E

GEVERS ST N

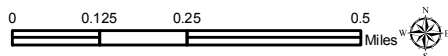
WALTERS ST N

COMMERCE ST E

GEVERS ST S

WALTERS ST S

NEW BRAUNFELS AV S



Data Source: City of San Antonio Enterprise GIS, Bexar Metro 911, Bexar Appraisal District  
"This Geographic Information System Product received from the City of San Antonio is provided "as is" without warranty of any kind, and the City of San Antonio expressly disclaims all expressed and implied warranties, including but not limited to the implied warranties of merchantability and fitness for a particular purpose. The City of San Antonio does not warrant, guarantee, or make any representations regarding the use, or the results of the use, of the information provided to you by the City of San Antonio in terms of completeness, accuracy, reliability, timeliness or otherwise. The entire risk as to the results and performance of any information obtained from the City of San Antonio is entirely assumed by the recipient."  
\*Please contact the City of San Antonio Department for specific determinations.  
Map Created by: Michael Taylor, AICP  
Map Creation Date: July 12, 2013

**Note: Target Area boundaries are  
subject to change or modification.**



John Dugan, AICP  
Director

City of San Antonio  
Planning & Community Development  
1400 S. Flores  
San Antonio, TX 78204

