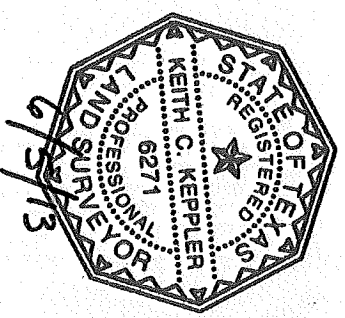
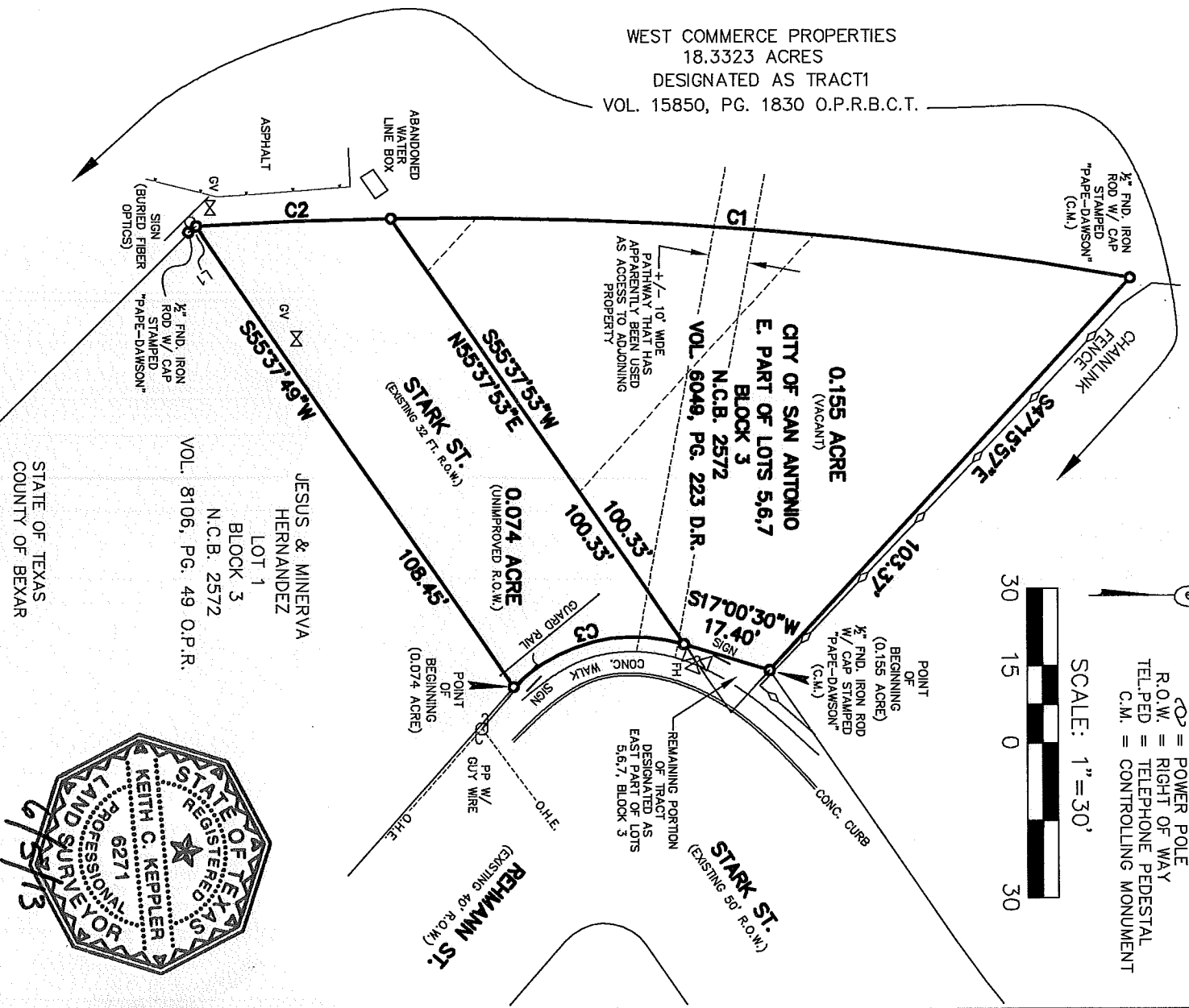


CURVE	DELTA	RADIUS	LENGTH	BEARING	CHORD
C1	11°00'57"	749.70'	144.14'	N04°46'21"E	143.92'
C2	02°53'24"	749.70'	37.82'	N02°10'49"W	37.81'
C3	61°34'27"	33.39'	35.88'	S13°46'43"E	34.18'
LINE	BEARING	DISTANCE			
L1	S38°07'51"E	1.90'			

LEGEND

CONC. = CONCRETE
CM = CONTROL MONUMENT
D.R. = DEED RECORDS
O.H.E. = OVERHEAD ELECTRIC
E/P = EDGE OF PAVEMENT
FH = FIRE HYDRANT
GV = GAS VALVE
O.P.R. = OFFICIAL PUBLIC RECORDS
COP = POWER POLE
R.O.W. = RIGHT OF WAY
TEL.PED = TELEPHONE PEDESTAL
C.M. = CONTROLLING MONUMENT

SCALE: 1"=30'



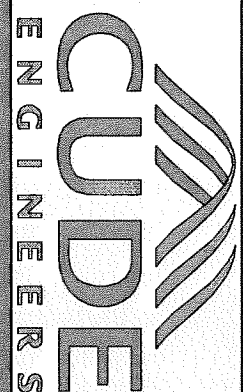
I HEREBY CERTIFY THAT THIS SURVEY AND ACCOMPANYING FIELD NOTES REPRESENTS FACTS DISCLOSED BY AN ON THE GROUND SURVEY MADE UNDER MY SUPERVISION.

THIS 5TH DAY OF JUNE, 2013 A.D.

Keith C. Kepler
KEITH C. KEPLER, R.P.L.S. NO. 6271

NOTES:

1. BASIS OF BEARING IS THE TEXAS COORDINATE SYSTEM OF 1983, SOUTH CENTRAL ZONE (4204).
2. SETBACKS OR EASEMENTS PER RESTRICTIONS OR ZONING MAY EXIST.
3. METES AND BOUNDS DESCRIPTION ACCOMPANYING THIS SURVEY PLAT OF EVEN DATE.
4. ALL PROPERTY CORNERS ARE 1/2" SET IRON RODS WITH RED PLASTIC CAP STAMPED "M.W. CUDE" UNLESS OTHERWISE NOTED.
5. THIS SURVEY WAS PREPARED WITHOUT THE BENEFIT OF A TITLE REPORT.



CUDE ENGINEERS
1350 N. LOOP 1604 E. • SUITE 104
SAN ANTONIO, TEXAS 78232
TEL 210.681.2951 • FAX 210.523.7112
WWW.MWCUDE.COM
TBPE REGISTERED ENGINEERING
FIRM #455

221 STARK STREET

DATE: JUNE 5, 2013 JOB NO.: 02858.000