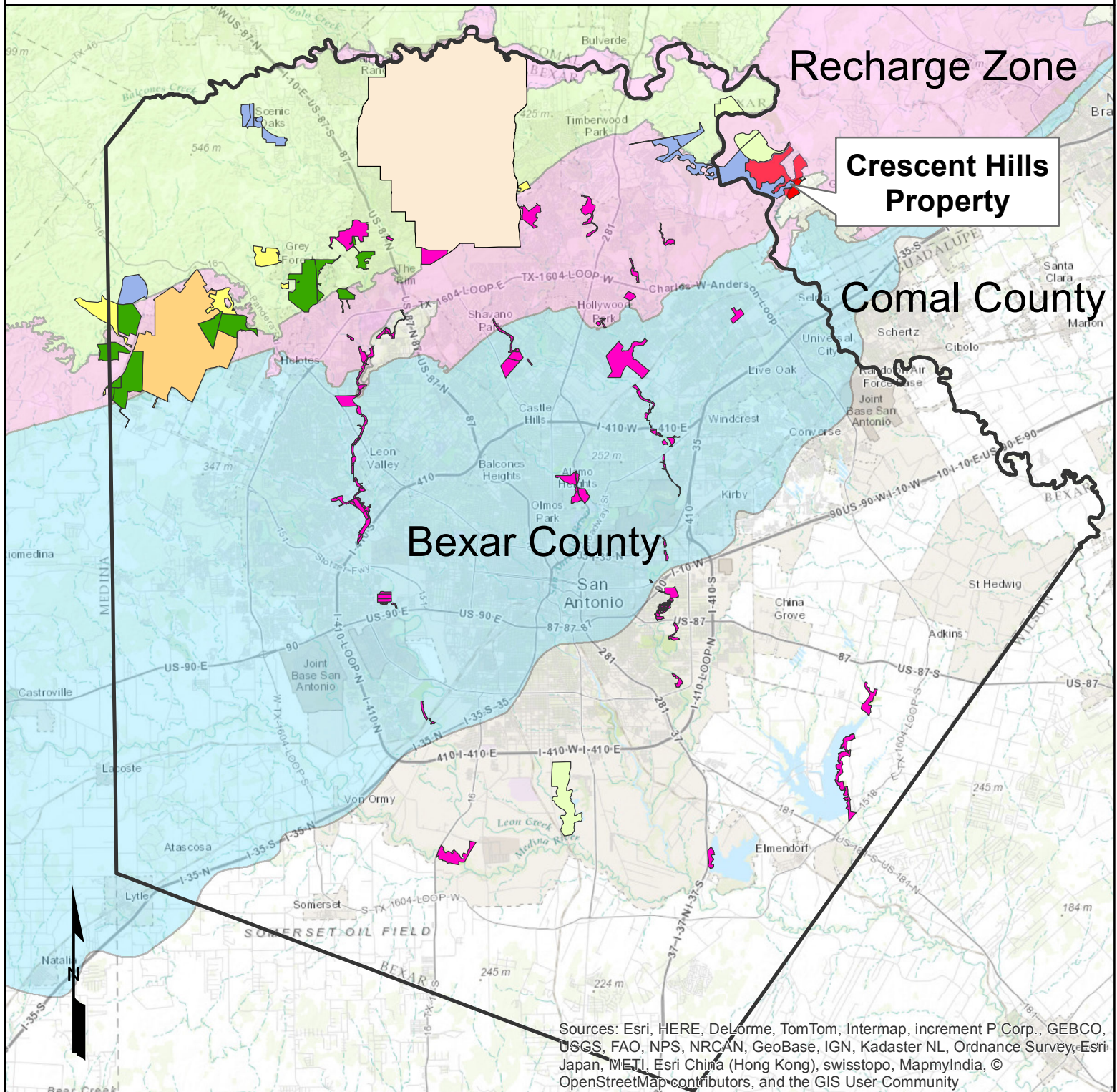


# City of San Antonio Edwards Aquifer Protection Program Crescent Hills Property



City of San Antonio



- |   |  |   |
|---|--|---|
| <span style="display:inline-block; width:15px; height:15px; background-color:red; border:1px solid black;"></span> Crescent Hills Property            | <span style="display:inline-block; width:15px; height:15px; background-color:orange; border:1px solid black;"></span> Federal Managed Land     | <span style="display:inline-block; width:15px; height:15px; background-color:lightgreen; border:1px solid black;"></span> Edwards Aquifer Drainage Area |
| <span style="display:inline-block; width:15px; height:15px; background-color:green; border:1px solid black;"></span> Proposition 3 (2000) Properties  | <span style="display:inline-block; width:15px; height:15px; background-color:yellow; border:1px solid black;"></span> Texas Parks and Wildlife | <span style="display:inline-block; width:15px; height:15px; background-color:lightblue; border:1px solid black;"></span> Edwards Aquifer Recharge Zone  |
| <span style="display:inline-block; width:15px; height:15px; background-color:yellow; border:1px solid black;"></span> Proposition 1 (2005) Properties | <span style="display:inline-block; width:15px; height:15px; background-color:blue; border:1px solid black;"></span> The Nature Conservancy     | <span style="display:inline-block; width:15px; height:15px; background-color:lightblue; border:1px solid black;"></span> Edwards Aquifer Artesian Zone  |
| <span style="display:inline-block; width:15px; height:15px; background-color:magenta; border:1px solid black;"></span> City Parks                     | <span style="display:inline-block; width:15px; height:15px; background-color:lightgreen; border:1px solid black;"></span> Conservation Land    |   |

0 2 4 8 12 16  
Miles

THE CITY OF SAN ANTONIO MAKES NO WARRANTY, REPRESENTATION, OR GUARANTEE OF ANY KIND REGARDING THIS MAP OR INFORMATION PROVIDED HEREIN.

The City of San Antonio assumes no liability either for any errors, omissions, or inaccuracies in the information provided regardless of the cause of such or for any decision made, action taken, or action not taken by the user in reliance upon any maps or information provided.